

AWARDS PROCESSED
 Research and Other Sponsored Activities
 November 1, 2008 through November 30, 2008

Received by the Regents
 December 18, 2008

The awards detailed in this list were processed November 1, 2008 through November 30, 2008. The dollar values depict the best available estimate of the funding the University should receive over the life of the award. These values may be modified, as additional data become available relative to future funding prospects. These modifications are not reported in the attached list. As a result, the dollar values of awards presented in this list will differ from the year-end totals. The full amount of an award is recorded in the year in which it was received. Often these funds are expended over several years, making comparisons between awards and expenditures somewhat misleading. Research expenditures are presented here to provide a trend line for the current fiscal year.

	Number of Awards FY 2008	Number of Awards FY 2009	% Change	Value of Awards FY 2008	Value of Awards FY 2009	% Change
Total Awards Processed (November)	152	136	(10.5%)	\$78,572,718	\$39,134,710	(50.2%)
Research Awards	115	82	(28.7%)	\$77,014,860	\$31,980,842	(58.5%)
Research Training	3	0	(100.0%)	\$123,114	\$0	(100.0%)
Other Sponsored Activity	34	54	58.8%	\$1,434,744	\$7,153,868	398.6%
<hr/>						
Total Awards Processed Fiscal Year to Date	1,234	1,279	3.6%	\$516,511,574	\$555,782,636	7.6%
Research Awards	900	934	3.8%	\$473,714,270	\$499,842,489	5.5%
Research Training	71	48	(32.4%)	\$21,075,513	\$15,235,591	(27.7%)
Other Sponsored Activity	263	297	12.9%	\$21,721,791	\$40,704,556	87.4%

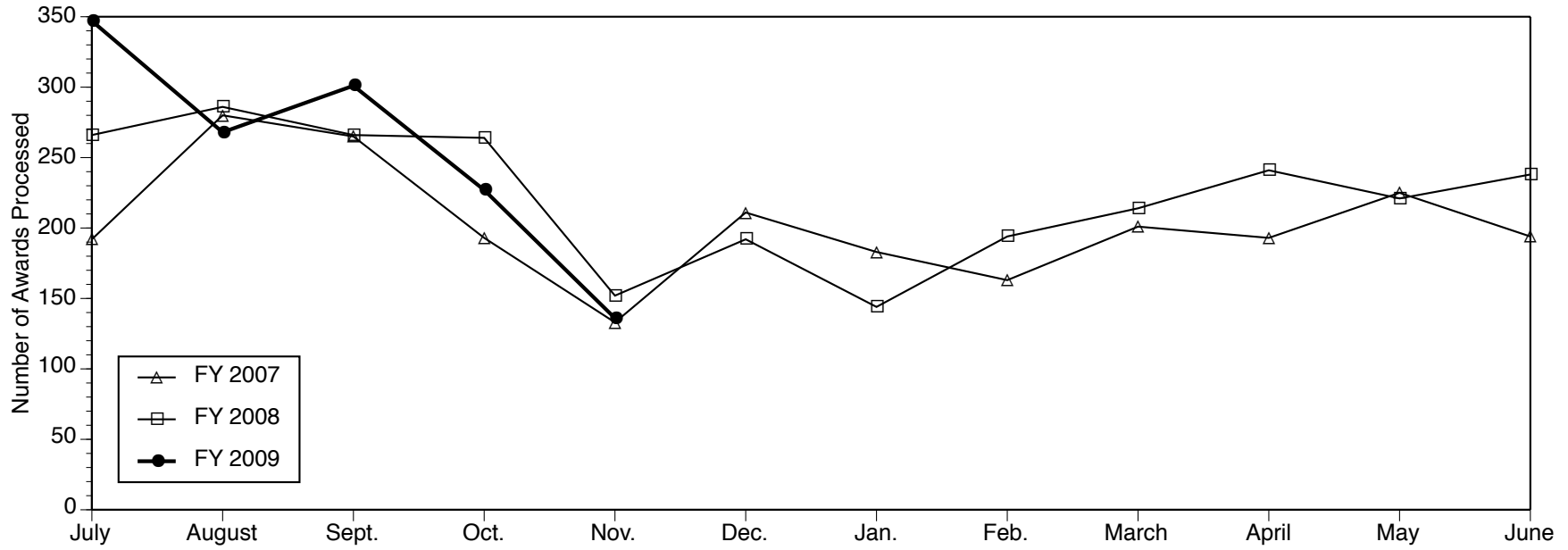
November 2008 award values show a decline when compared with November 2007 caused primarily by the receipt of a \$54.6 million award in November 2007. No comparable size award was processed in November 2008. If this large award were eliminated from the 2007 totals the percentage change between the two months would be 63.2%.

----- RESEARCH EXPENDITURES -----

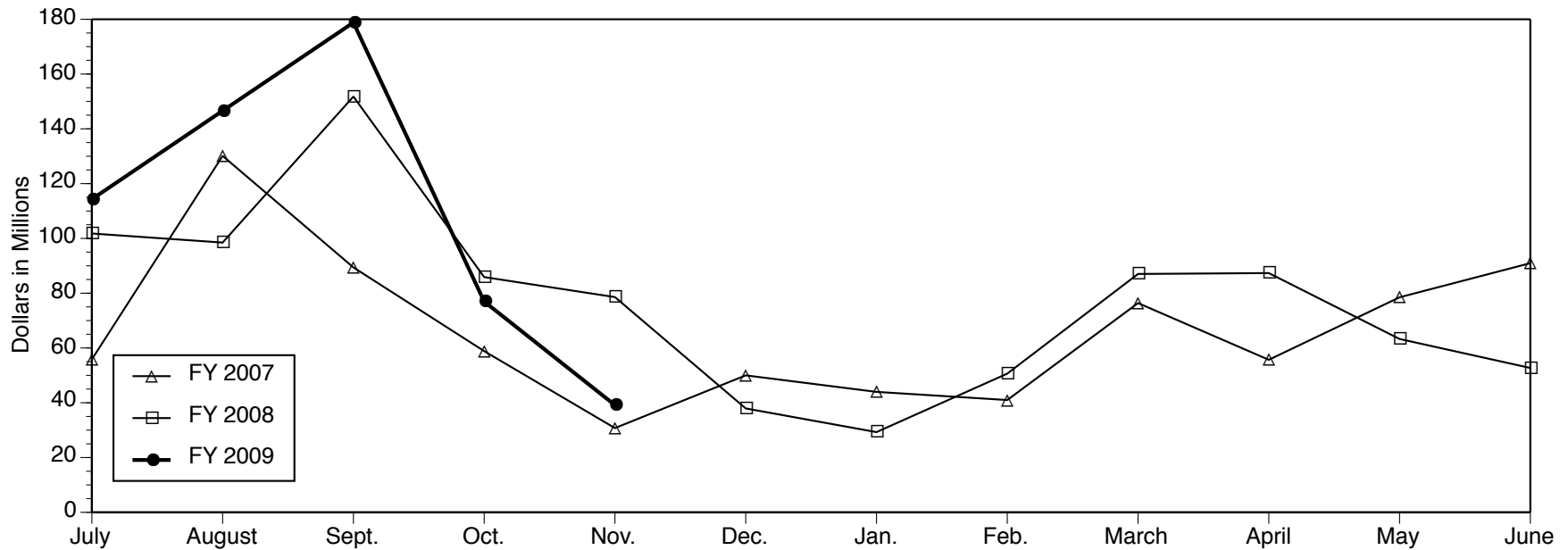
	Federal Expendable Restricted	Other Funds	Total Expenditures
October 2008	\$214,476,865	\$96,213,647	\$310,690,512
October 2007	\$212,962,554	\$78,301,365	\$291,263,919
Percent Change	0.7%	22.9%	6.7%

Source: Division of Research Development and Administration

Number of Awards Processed



Dollar Value of Awards Processed



Data Source: Division of Research Development and Administration

**PROJECTS ESTABLISHED FOR
RESEARCH AND OTHER SPONSORED ACTIVITIES**

November 1, 2008 through November 30, 2008

The projects listed here by sponsor were established during the month designated in the heading above. For each project, the listing includes the project title, the project director (and his or her unit affiliations), faculty or primary research staff participating in the project (and their unit affiliations), the amount awarded for the period, and the project period. NOTE: When more than one unit is listed for the project director, the unit responsible for the project is given first.

Abbott Laboratories

Effect of nAChR Agonists and a D3 Antagonist (in Interaction With Low Dose Clozapine Treatment) on dSAT Performance in Intact Animals and an Animal Model of the Persistent Symptoms of Schizophrenia

MARTIN FRIEDRICH SARTER (LSA Psychology)

\$129,780 11/10/08 - 11/09/09

ACCESS- Youth and Education (Arab Community Center for Economic and Social Services)

Grantee Support MI AmeriCorps Partnership - 2008-10

MARGARET E DEWAR (Community Service Learning)

\$7,200 09/01/08 - 05/31/10

Advanced Ceramics Manufacturing, Inc

STTR Phase I: Non-Contract Tabletop Mechanical Testing of Ultra-High Temperature Ceramics

JOHN W HALLORAN (Materials Science & Engin.)

\$50,000 11/01/08 - 07/31/09

American Cancer Society

Inhibition of Monocyte Chemoattractant Protein-1 to Treat Prostate Cancer

KENNETH J PIENTA (Int Med-Hematology/Oncology)

\$400,000 07/01/08 - 12/31/13

American College of Cardiology

High Resolution Endocardial Mapping of Atrial Fibrillation Sources

JEROME KALIFA (Int Med-Cardiology)

\$78,770 04/01/08 - 06/30/09

Ann Arbor Teen Center

Grantee Support MI Americorps Partnership - 2008-10

MARGARET E DEWAR (Community Service Learning)

\$3,600 09/01/08 - 05/31/10

Association of American Medical Colleges

National Kidney Disease Surveillance (NKIDDs) Initiative

RAJIV SARAN (Int Med-Nephrology)

With BRENDA WILSON GILLESPIE (Ctr Statistical Consul & Res);

VAHAKN BEDIG SHAHINIAN (Int Med-Nephrology)

\$253,828 09/30/08 - 09/29/09

Battel Engineering, Inc

HVPS Fabrication Support to Battel Engineering

CHARLES J M EDMONSON JR (Space Physics Research Lab)

\$14,999 11/15/08 - 08/31/09

Bayer Corporation

The Effect of an Oral Contraceptive Containing Both Estrogen and Progesterone on Endothelial Function Among Premenopausal Women with Visceral Obesity

ANJEL M VAHRATIAN (Obstetrics and Gynecology Dept)

With VANESSA K DALTON

(Obstetrics and Gynecology Dept); BERTRAM PITT (Int Med-

Cardiology)

\$85,028 11/12/08 - 11/11/09

Blue Cross Blue Shield of Michigan

Michigan Bariatric Quality Improvement Collaborative

NANCY J BIRKMEYER (Surgery Department)

With JOHN D BIRKMEYER (General Surgery Section)

\$746,666 10/01/08 - 11/30/09

California Institute of Technology

Lepri E/PO Supplement, SWICS and SWIMS Instruments for the Advanced Composition Explorer (ACE): Mission Operations and Data Analysis

GEORGE GLOECKLER (Space Physics Research Lab)

With SUSAN THERESE LEPRI (Space Physics Research Lab)

\$5,000 03/01/08 - 02/28/13

Centocor, Inc.

University of Michigan Biology Support for Centocor's CCL17 Program

CORY M HOGABOAM (Pathology Department)

With BETHANY B MOORE (Int Med-Pulm./Critical Care)

\$2,520,605 10/07/08 - 04/30/12

Role of IL-33, soluble ST2, and ST2L in M2 Macrophage Activation and Asthma

CORY M HOGABOAM (Pathology Department)

\$244,170 10/22/08 - 10/21/09

Clark Park Coalition

Grantee Support MI Americorps Partnership - 2008-10

MARGARET E DEWAR (Community Service Learning)

\$3,600 09/01/08 - 05/31/10

Columbia University

Child Care and Early Education Research Connections

MYRON P GUTMANN (ICPSR-Archival Development)

\$679,575 09/30/08 - 09/29/09

Concerned Parents for AIDS Research

A Search for a Viral Cause of AIDS Lymphoma
MARK H KAPLAN (Int Med-Infectious Diseases)

\$90,000 10/01/08 - 10/31/09

Dartmouth College

Media Influences on Early Onset Alcohol Use

SONYA DAL CIN (LSA Communication Studies)

\$13,938 08/10/08 - 07/31/09

Defense, Department of-Navy, Department of the

Blind Deconvolution Based on Generic Features of Ocean Acoustic Propagation

DAVID R DOWLING (Mechanical Engineering)

\$160,000 01/01/09 - 12/31/10

DePuy Orthopaedics, Inc.

University of Michigan International Hand Surgery Fellowship Program

KEVIN CHI CHUNG (Plastic Surgery Section)

\$70,000 08/01/08 - 07/31/09

Detroit Area Agency on Aging

Tools for Continuous Quality Improvement of Detroit Nursing Homes

MARY LEWIS JAMES (Institute of Gerontology)

With BRANT E FRIES (Institute of Gerontology)

\$74,263 10/01/08 - 09/30/09

Duke University

Coping Skills Training for Spinal Cord Stimulator Patients

DAVID A WILLIAMS (Anesthesiology Department)

With PARAG G PATIL

(Neurosurgery); RANDY SCOTT

ROTH (Physical Medicine & Rehab Dept)

\$179,266 09/30/08 - 08/31/09

Duke, Doris, Charitable Foundation

Searching for Recurrent Gene Fusions and Translocations in Common Solid Tumors

ARUL M CHINNAIYAN (Ctr for Translational Pathology)

\$1,500,000 01/01/09 - 12/31/13

Education Resource Strategies

Evaluation of Teacher Effectiveness

BRIAN AARON JACOB (G. Ford Sch of
Public Policy)

\$103,829 09/01/08 - 04/30/10

Electric Rocket Propulsion Society

International Electric Propulsion Conference 2009

ALEC D GALLIMORE (Aerospace
Engineering)

\$5,000 08/25/08 - 01/01/10

EMAG Technologies, Inc.

Antenna Design by Genetic Algorithms

ERIC MICHIELSSEN (CoE EECS-Rad)

\$49,990 09/01/08 - 06/30/09

EMCORE

ME 450 Mechanical Design - Fall 2008

ALBERT J SHIH (Mechanical
Engineering)

\$10,625 09/01/08 - 12/31/08

Environmental Protection Agency

EPA STAR Fellowship: David Berry

LUTGARDE M RASKIN (Civil &
Environmental Engr)

\$17,000 09/01/08 - 08/31/09

Integrated Carbon Credit Programs: A Biofuels
Program in Madagascar That Links The Energy,
Land Use, and Transportation SectorsGAVIN MICHAEL SHATKIN (Urban
Planning)

\$10,000 08/15/08 - 08/14/09

EPIR, Ltd.Advanced High Operating Temperature Midwave
Infrared DetectorsJAMIE DEAN PHILLIPS (CoE EECS-
Ssel)

\$50,000 10/15/08 - 08/23/10

Florida, State ofProject IDEAL State Membership: ACE of
FloridaJEROME JOHNSTON (RCGD-
Communication/Education)

\$30,625 07/01/08 - 06/30/09

Ford Motor CompanyCost Reduction of Class "A" Injection Molded
TPO Color ComponentsDAVID C MARTIN (Materials Science &
Engin.)

\$81,088 10/01/08 - 09/30/09

Forest Laboratories, Inc.A Single-Center, Randomized, Double-Blind,
Placebo-Controlled, Two-Way Crossover Study
to Evaluate the Effect of Milnacipran on Pain
Processing in Patients with Fibromyalgia: an
fMRI StudyDANIEL J CLAUW (Anesthesiology
Department)With JENNIFER M GLASS (Psych
Substance Abuse); DAVID A
WILLIAMS (Anesthesiology
Department)

\$740,138 11/10/08 - 05/30/10

Gates, Bill and Melinda, FoundationHuman Resources for Health: A Learning Grant
for Capacity Strengthening in GhanaTHOMAS G ROBINS (Environmental
Health Sciences)With FRANK J ANDERSON
(Obstetrics and Gynecology Dept); N
CARY ENGLEBERG (Int Med-
Infectious Diseases); TIMOTHY R B
JOHNSON (Obstetrics and
Gynecology Dept); MARGARET E
KRUK (Health Management and
Policy); RACHEL CAMPBELL
SNOW (Hlth Behavior & Hlth Ed
Dept)

\$2,967,722 11/01/08 - 11/01/10

GE HealthcareDose Reduction in CT: A Practice Quality
Improvement (PQI)ELLA A KAZEROONI (Radiology
Department)With JON A JACOBSON (Radiology
Department); SURESH K MUKHERJI
(Radiology Department); JOEL F
PLATT (Radiology Department);
BASKARAN SUNDARAM
(Radiology Department)

\$43,826 11/01/08 - 10/31/09

Genentech, Inc.

National Cooperative Growth Study (NCGS) of Nutropin AQ, Nutropin, Protopin, and Nutropin Children with Growth Failure Due to Chronic Renal Insufficiency (CRI) or End-Stage Renal Disease

KATHERINE LOUISE COLLINS
(Pediatrics-Nephrology)

\$8,375 01/01/09 - 12/31/11

Genentech National Cooperative Growth Study (NCGS) Post Marketing Surveillance Program (original agreement 12/31/2011)

NANCY J HOPWOOD (Pediatrics-Endocrinology)

\$51,087 01/01/09 - 12/31/11

A Phase III, Multi-center, Placebo-controlled, Double-blind, Randomized Clinical Trial to Evaluate the Efficacy of Bevacizumab in Combination with Tarceva (Erlotinib) Compared with Tarceva Alone for Treatment of Advanced Non-small Cell Cancer (NSCLC) after Failure of Standard First Line Chemotherapy

DAVID N REISMAN (Int Med-Hematology/Oncology)

With GREGORY KALEMKERIAN
(Int Med-Hematology/Oncology);

BRYAN J SCHNEIDER (Int Med-Hematology/Oncology)

\$1,500 05/01/06 - 12/31/09

General Motors Corporation

NSF - Engineering Research Center for Reconfigurable Manufacturing Systems

YORAM KOREN (CoE Research Center)

\$300,000 08/01/07 - 07/31/09

Genesee County

Genesee County REACH U.S.

DANIEL JAMES KRUGER (Hlth Behavior & Hlth Ed Dept)

\$28,142 10/01/08 - 01/31/09

GESIS-ZUMA

Program for the International Assessment of Adult Competencies

BETH-ELLEN PENNELL (Survey Research Organization)

\$20,949 11/01/08 - 01/31/09

MC3 Conference-Non Salary Conference Expenses

BETH-ELLEN PENNELL (Survey Research Organization)

\$10,034 09/01/07 - 08/31/08

Gethsemane Missionary Baptist Church

Grantee Support MI AmeriCorps Partnership - 2008-10

MARGARET E DEWAR (Community Service Learning)

\$5,790 09/01/08 - 05/31/10

Gilead Sciences, Inc.

A Double-blind, Multicenter, Multinational, Randomized, Placebo-Controlled Trial Evaluating Aztreonam, Lysine for Inhalation in Patients with Cystic Fibrosis, Mild Lung Disease and P. Aeruginosa (AIR-CF4)

SAMYA Z NASR (Pediatrics-Pulmonary Medicine)

With MANUEL ARTETA (Pediatrics-Pulmonary Medicine); AMY G

FILBRUN (Pediatrics-Pulmonary Medicine); MARC B HERSHENSON

(Pediatrics-Pulmonary Medicine);

TOBY C LEWIS (Pediatrics-Pulmonary Medicine); WAN CHONG

TSAI (Pediatrics-Pulmonary Medicine)

\$31,620 10/10/08 - 10/09/09

Greening of Detroit

Grantee Support MI AmeriCorps Partnership - 2008-10

MARGARET E DEWAR (Community Service Learning)

\$16,590 09/01/08 - 05/31/10

Health and Human Services, Department of-Food and Drug Administration

Vector Core Expendable Restricted Fund

Recharge Account - External FEDERAL Source: FDA

BLAKE J ROESSLER (Center for Gene Therapy)

With THOMAS M LANIGAN (Center for Gene Therapy)

\$19,500 01/01/09 - 12/31/11

**Health and Human Services, Department of-
National Institutes of Health**

Chemistry and Biology of Bacterial
Sulfonucleotide Reductases

KATE S CARROLL (Life Sciences
Institute-Admin)

\$1,294,245 12/01/08 - 11/30/13

Ion Conductances in the Retinal Pigment
Epithelium

BRET A HUGHES (Ophthalmology &
Visual Science)

\$1,931,250 12/01/08 - 11/30/13

Regulation of Nuclear Receptor Function Through
SUMO Modification

JORGE A INIGUEZ-LLUHI
(Pharmacology Department)

\$77,250 09/20/08 - 08/31/09

Optimization of Biomolecular Fluorescence
Complementation Probes for New Imaging
Functions

TOM K W KERPPOLA (Biological
Chemistry Dept)

With TZVI TZFIRA (LSA
Molec./Cell./Develop. Bio)

\$2,735,497 09/30/08 - 07/31/12

DSP-PP Precursor Protein Processing

HELENA H RITCHIE (Cariology, Restor
Sci & Endo)

With ROBERT S FULLER
(Biological Chemistry Dept)

\$1,374,314 12/01/08 - 11/30/12

Vector Core Expendable Restricted Fund

Recharge Account - External FEDERAL Source:
NIH

BLAKE J ROESSLER (Center for Gene
Therapy)

With THOMAS M LANIGAN (Center
for Gene Therapy)

\$19,500 01/01/09 - 12/31/11

Emerging Disparities in Chronic Disease Risk
Among Young Adults

NARAYAN SASTRY (Pop Studies-
Research)

With GEORGE A KAPLAN
(Epidemiology Department)

\$1,519,659 12/01/08 - 10/31/13

Hope Foundation, The

Strope SWOG Uro-Oncology Fellowship

DAVID P WOOD JR (Urology Surgery)

\$50,000 11/01/08 - 12/31/09

**Hunter College, CUNY (City University of New
York)**

Under the Skin: Understanding the Role of Stress
and Immune Function in Health Disparities

ALLISON ELIZABETH AIELLO

(Epidemiology Department)

With MARY N HAAN (Epidemiology
Department); GEORGE A KAPLAN

(Epidemiology Department)

\$84,338 09/22/08 - 06/30/09

INC Research, Inc

An Open-Label Multicenter Extension Study to
Determine Long Term Safety and Efficacy of
Pregabalin (Lyrica) as Monotherapy in Patients
with Partial Seizures Protocol A0081160

DANIELA N MINECAN (Neurology
Department)

\$29,163 12/01/08 - 05/31/11

Ingham, County of

Title XV Breast and Cervical Cancer Control
Program

EMILY K MEULEMAN (SON-(Div II)
Division of Hlth)

\$9,500 10/01/08 - 09/30/09

**International Truck and Engine Corporation
(NAVISTAR)**

Evaluation of Health Management Initiatives

DEE W EDINGTON (Health
Management Research Ctr)

\$40,000 11/01/08 - 10/31/09

J. Howard Enterprises Ltd

Harley Barge in Tow

GUY A MEADOWS (Naval Arch &
Marine Dept)

\$8,500 08/04/08 - 12/04/08

Jet Propulsion Laboratory

Interdisciplinary Scientist (IDS) for the Cassini Interdisciplinary Magnetosphere and Plasma Investigation: MO & DA Efforts, Extended Mission

TAMAS I GOMBOSI (Space Physics Research Lab)

With KENNETH CALVIN HANSEN (Space Physics Research Lab)

\$1,135,432 11/10/08 - 09/30/10

Johnson, Robert Wood, Foundation

Youth, Education, and Society (YES) Study

LLOYD D JOHNSTON (SRC-Studies of Youth)

With JERALD G BACHMAN (SRC-Studies of Youth); PHILIPPA J CLARKE (SRC-Seh-House); JORGE DELVA (SRC-Studies of Youth); PATRICK M O'MALLEY (SRC-Studies of Youth); JOHN E SCHULENBERG (SRC-Studies of Youth)

\$7,676,077 11/15/08 - 11/14/12

Klingenstein Third Generation Foundation

Improving Patterns of Physical Activity and Sleep in Youth with Depression

CHERYL A KING (Psychiatry Child Services)

\$60,000 07/01/07 - 06/30/09

Lilly Research Laboratories-Elanco Products Company

Safety and Efficacy as Monotherapy and Adjunctive Therapy to Oral Antidiabetic Agents in Adolescents with Type 2 Diabetes

JOSEPHINE Z KASA-VUBU (Pediatrics-Endocrinology)

\$65,701 11/01/08 - 10/31/09

Lilly, Eli, and Company

2008.062: Pilot Prospective Clinical Trial Evaluating the Use of Duloxetine for Treatment of Aromatase Inhibitor-Associated Musculoskeletal Symptoms in Breast Cancer Patients

NORAH LYNN HENRY (Int Med-Hematology/Oncology)

\$93,229 11/01/08 - 04/30/10

INCREMENTAL 2006.113 - A Randomized Phase 3 Study of Pemetrexed in Combination with Cisplatin Versus Cisplatin Monotherapy in Patients with Recurrent or Metastatic Head and Neck Cancer

SUSAN URBA (Int Med-Hematology/Oncology)

\$1,200 09/01/08 - 10/31/09

Lockheed Martin Corporation

Simulations with Near-Field Plates

ROBERTO D MERLIN (LSA Physics)

\$25,000 11/06/08 - 12/15/08

Loeb, Frederick and Stella, Charitable Trust

Ready to Learn Program

JENNIFER BETH WHITE (Michigan Television)

\$5,000 04/01/08 - 03/31/09

Lycera Inc.

Studies of Small Molecules that Interact with Novel Targets

GARY D GLICK (LSA Chemistry)

\$463,500 11/01/08 - 10/31/11

Matrix Theatre Company

Grantee Support MI AmeriCorps Partnership - 2008-10

MARGARET E DEWAR (Community Service Learning)

\$3,600 09/01/08 - 05/31/10

Medical College of Georgia

Recharge: Clinical Research Assays

DANIEL S MCCONNELL (Epidemiology Department)

\$612 07/01/08 - 06/30/09

Michigan Campus Compact

Campus Engagement Fellows

KRISTINE DAY (Dbn Student Activities)

\$2,000 09/01/08 - 08/31/09

Martin Luther King Challenge

JONATHAN LARSON (Dbn Student Activities)

\$500 11/15/08 - 01/31/09

Life-Stories

MACKLIN SMITH (LSA English Language & Lit.)

\$1,842 09/01/08 - 08/31/09

Michigan Humanities Council

Picturing Your Community in America
Partnership

JENNIFER BETH WHITE (Michigan
Television)

\$43,900 11/01/08 - 08/30/09

Michigan Media Partnership for Radio and
Television

JENNIFER BETH WHITE (Michigan
Television)

\$75,000 10/01/08 - 09/30/09

Michigan Primary Care Association

Continuation of Funding: Clinical Child &
Adolescent Health Center (CAHC) Program
UMH RAHS @ Scarlett and East Middle Schools

SHARON A REDMER (UMH RAHS
Scarlett MiddleSchool)

With JENNIFER A SALERNO (UMH
RAHS Scarlett MiddleSchool)

\$175,000 10/01/08 - 09/30/09

Michigan Public Health Institute

"SWIM" Mini Grant

CHRISTIN M CARTHAGE (UMH
MSS/ISS)

\$1,404 03/01/08 - 07/31/08

Ambulatory Safety and Quality Program:
Improving Quality through Clinician Use of
Health IT--A Partnership for Clinician EHR Use
and Quality of Care - Year 2

KAI ZHENG (Health Management and
Policy)

\$22,174 09/01/08 - 08/31/09

Michigan State University

Development of New Technologies Needed for
Studying the Human Microbiome

VINCENT BENSAN YOUNG (Int Med-
Infectious Diseases)

\$131,425 09/23/08 - 07/31/09

**Michigan, State of, Community Health,
Department of**

Integrated Care for Medicaid Consumers with
Behavioral Health Care Needs

DAVID LEE NEAL (Psychiatry
Department)

\$1,163,599 10/01/08 - 09/30/09

Michigan, State of, Education, Department of
Michigan School Readiness Program 2008-09:
Child Development Center

MARY L TREPANIER-STREET (Dbn
School of Education)

\$61,200 10/01/08 - 09/30/09

**Michigan, State of, Management and Budget,
Department of**

Michigan Business: Surviving to Thriving
(MB:S2T)

LAWRENCE ALYN MOLNAR (IRLEE)

\$3,810,000 10/01/08 - 09/30/11

**Michigan, State of, Michigan Council for Arts
and Cultural Affairs**

Outreach in UMMA's FY09 Season

JAMES C STEWARD (Museum of Art)

\$31,900 10/01/08 - 06/30/09

Mosaic Youth Theatre of Detroit

Grantee Support MI AmeriCorps Partnership -
2008-10

MARGARET E DEWAR (Community
Service Learning)

\$2,190 09/01/08 - 05/31/10

MPI Research

Histological Service for MPI Research, Inc.,
Studies 147-003, 1527-001, 1562-001, MPI-1631-
001, MPI-813-014

RICHARD A ALTSCHULER (Kresge
Hearing Research Inst)

\$145,127 07/01/07 - 09/30/10

National Aeronautics and Space**Administration**

Probing the Star-Disk Connection: A Multi-
Faceted Investigation with Interferometry,
Spectroscopy and Modeling

JOHN D MONNIER (LSA Astronomy)

\$399,000 01/01/09 - 12/31/11

National Childhood Cancer Foundation

Children's Oncology Group Phase I/Pilot
Consortium - 2008/2009

RAJEN J MODY (Pediatrics-
Hematology/Oncology)

\$26,266 08/01/08 - 07/31/09

National Geographic Society

Eocene Whales and Sea Cows of Siwa Oasis,
Western Desert of Egypt

PHILIP D GINGERICH (LSA
Paleontology Museum)

\$12,500 01/01/09 - 06/30/10

National Science Foundation

Doctoral Dissertation Improvement Grant:
Making and Unmaking Polish Persons: Aging and
Memory in Postsocialist Poland

GILLIAN FEELEY-HARNIK (LSA
Anthropology)

\$8,800 12/01/08 - 05/31/10

IPA Agreement for Yogesh Gianchandani

YOGESH B GIANCHANDANI (COE
EECS - ECE - SSEL)

\$4,284 09/01/08 - 04/16/09

Nissan Chemical Industries, Ltd

Evaluation of Imprinted Polymer Nanostructures
for Liquid Crystal Alignment Application

L JAY GUO (COE EECS - ECE - SSEL)

\$56,803 01/01/09 - 06/30/09

Nissan Technical Center, North America

Vibration Transmission from Road Surface
Features - Vehicle Measurement and Detection -
Phase 3

TIMOTHY J GORDON (UMTRI-
Engineering Research)

\$55,000 06/15/08 - 03/31/09

Novartis

A Multicenter, Randomized, Blinded Study to
Assess Safety and Efficacy of Pasireotide LAR
vs. Octreotide LAR in Patients with Active
Acromegaly

ARIEL L BARKAN (Metabolism, Endo
& Diabetes)

\$162,742 10/30/08 - 07/26/10

Online Computer Library Center, Inc.

OAlster Transfer Initiative

JOHN PRICE WILKIN (University
Library)

\$44,000 11/01/08 - 06/30/09

Orbit Baby, Inc

Recharge: Child Restraint Testing

LAWRENCE W SCHNEIDER (UMTRI-
Biosciences)

\$3,010 03/01/07 - 02/28/12

OSI Pharmaceuticals, Inc.

Time-Dependent Inhibition of Human
Cytochrome P450s

PAUL F HOLLENBERG (Pharmacology
Department)

\$25,000 08/14/07 - 04/01/09

**Our Lady of Guadalupe Middle School For
Girls**

Grantee Support MI AmeriCorps Partnership -
2008-10

MARGARET E DEWAR (Community
Service Learning)

\$3,600 09/01/08 - 05/31/10

Pan American Health Organization

Translating 'Measuring Health Disparities' into
Spanish and Portuguese

SHARON REILLY KARDIA
(Epidemiology Department)

\$67,795 07/01/08 - 02/27/09

Peking University

Chinese Family Panel Studies

YU XIE (Survey Research Organization)

\$16,114 10/01/08 - 03/31/09

Pennsylvania State University

Statistical Methods for the Functional Genomic
Data

JEREMY M G TAYLOR (Biostatistics
Department)

\$59,636 09/01/08 - 08/31/09

Plastic Surgery Educational Foundation

Quantitative Analysis of Radiation Induced Injury
to the Mandible

STEVEN R BUCHMAN (Plastic Surgery
Section)

\$5,000 10/13/08 - 06/30/09

Raytheon Company

AAVT IR&D Adaptive Control Algorithm
Development and Technical Support

DENNIS S BERNSTEIN (Aerospace
Engineering)

\$29,881 09/01/08 - 12/31/08

Renal Research Institute, LLC

VF Doppler: Prototype Development of Compact Wireless Implementation for Planned Use in Upcoming Single Center Prospective Study of the Natural History of Dialysis Access Flow

WILLIAM F WEITZEL III (Int Med-
Nephrology)

\$35,000 10/01/08 - 07/31/09

Restaurant Opportunities Center United Inc

Grantee Support MI AmeriCorps Partnership - 2008-10

MARGARET E DEWAR (Community
Service Learning)

\$1,375 09/01/08 - 05/31/10

Sage, Russell, Foundation

An Empirical Investigation of the Demand for Prevention: An Analysis of Cervical Cancer Screening

PAULA M LANTZ (Health Management
and Policy)

\$5,000 06/30/08 - 08/31/09

Sandia National Laboratories

Ionization Dynamics of Wire Z-Pinches

RONALD M GILGENBACH (Nuclear
Eng & Radiological Sci)

With YUE YING LAU (Nuclear Eng
& Radiological Sci)

\$40,000 11/01/08 - 10/31/09

**Sarcoma Alliance for Research Through
Collaboration (SARC)**

Database Management Services for SARC005 (II)

DANIEL J CLAUW (Mich Inst for Clin &
Hlth Resr)

\$9,553 02/01/09 - 01/31/10

Signal Pharmaceuticals

Effect of CC930 on Lung Fibrosis in an Adoptive Transfer Model of Pulmonary Fibrosis

CORY M HOGABOAM (Pathology
Department)

\$15,219 12/01/07 - 12/16/09

Southeastern Michigan Health Association

Grantee Support MI Americorps Partnership - 2008-10

MARGARET E DEWAR (Community
Service Learning)

\$7,200 09/01/08 - 05/31/10

Spencer Foundation

The Impact of Meta-Cognitive Strategies within Writing in the Disciplines: Experiments to Improve Writing and Critical Thinking

ANNE RUGGLES GERE (LSA
Sweetland Writing Center)

With MATTHEW L KAPLAN (Ctr
for Res on Learn & Teach)

\$45,000 07/01/08 - 06/30/11

Stanford University

Fellowship at the Center for Advanced Study in the Behavioral Sciences (CASBS)

SHINOBU KITAYAMA (LSA
Psychology)

\$28,674 09/02/08 - 08/07/09

Structure and Dynamics of Beta 2 Andrenoceptor Coupling to Gs

ROGER K SUNAHARA (Pharmacology
Department)

\$179,590 05/01/08 - 02/28/09

Stiefel Laboratories

Activity of Coffeeberry on Human Skin

GARY J FISHER (Dermatology
Department)

With MANDY HARTING
(Dermatology Department); DANA

LYNN SACHS (Dermatology
Department)

\$79,800 11/01/08 - 10/31/09

The Feinstein Institute for Medical Research

ACE Year 6 -The IL-12p40 Family of Monokines in Secondary Progressive MS

BENJAMIN M SEGAL (Neurology
Department)

With SINAE KIM (Biostatistics
Department)

\$191,520 04/01/08 - 03/31/09

The Sakai Foundation

UM Support to the Sakai Community - Extension to 6/30/09

CHARLES R SEVERANCE (Digital
Media Commons)

\$156,261 01/01/09 - 06/30/09

Toyota Motor Company, Ltd.

Robust Solar Concentrator System for Hydrogen Production

KAZUHIRO SAITOU (Mechanical Engineering)
\$100,000 11/03/08 - 11/02/09

Toyota Motor North America, Inc.

Feasibility Study of Multi-Channel MEMS Microphone Arrays

KARL GROSH (Mechanical Engineering)
With DAVID R DOWLING (Mechanical Engineering)
\$30,000 10/01/08 - 12/31/08

Tulane University

Development and Use of Genetic Methods for Assessing Aquatic Environmental Condition and Recruitment Dynamics of Native Stream Fishes on Pacific Islands

PETER B MCINTYRE (Sch of Nat Resources & Environ)
\$21,943 09/23/08 - 09/22/09

United Therapeutics Corporation

An Evaluation of the Pharmacokinetics and Safety of Fixed and Escalating Doses of Oral Treprostinil Diethanolamine (UT-15C) Sustained Release Tablets in Patients w/SSc

JAMES R SEIBOLD (Int Med-Rheumatology)
\$108,454 11/13/08 - 09/30/12

University of California - Davis

AFWG Phase III Research

NADINE C NABER (LSA American Culture)
\$17,000 07/01/07 - 06/01/10

University of California - Irvine

Cortical and Behavioral Responses to Cochlear Implants

BRYAN E PFINGST (Kresge Hearing Research Inst)
\$55,086 07/01/08 - 11/30/08

University of California - San Francisco

Robert Wood Johnson Foundation Executive Nurse Fellowship Project/UMHS Succession Plan Prospectus and Leadership Development Plan/Fellowship Aim and Objectives

SHON ANN DWYER (UMH Ops & Ancil Svcs. AdminHHC)
\$35,000 06/01/07 - 05/31/11

University of California-San Diego

Molecular Basis of Endothelial Remodeling by Flow

JUN-LIN GUAN (Int Med-Molecular Med&Genetics)
\$100,005 08/01/08 - 07/31/09

University of Iowa

Long-term Safety and Genetic Risk Factors of Risperidone Treatment in Youth

VICKI LYNN ELLINGROD (College of Pharmacy)
\$29,678 08/01/08 - 07/31/09

University of Missouri

The Effects of Acute Events on ADL Trajectories of Nursing Home Residents

JANE C BANASZAK-HOLL (Health Management and Policy)
\$14,829 09/01/08 - 08/31/09

University of North Carolina

Infant Study of Inhaled Saline (ISIS)

AMY G FILBRUN (Pediatrics-Pulmonary Medicine)
\$151,132 01/01/08 - 09/30/08

University of Pittsburgh

Validation of Ubiquilin 1 and Candidate Serum Autoantibodies Using a Phage Epitope Microarray and Multiplexed Immunobead Based

Technologies for the Diagnosis of Lung Cancer
DAVID G BEER (Thoracic Surgery Section)

\$65,757 08/01/08 - 07/31/09

University of Texas

Sequenced Treatment Alternatives to Relieve Depression (STAR*D)

ELIZABETH A YOUNG (Molecular & Behav Neurosc Inst)
\$5,253 09/29/08 - 09/28/09

Various Sponsors

Vector Core Expendable Restricted Fund

Recharge Account - External Sources

BLAKE J ROESSLER (Center for Gene Therapy)

With THOMAS M LANIGAN (Center for Gene Therapy)

\$135,500 01/01/09 - 12/31/11

Washington University

Pharmacomechanical Catheter-Directed

Thrombolysis for Acute DVT -(ATTRACT) Trial

DAVID M WILLIAMS (Radiology Department)

With KYUNG J CHO (Radiology Department); WOJCIECH B

CWIKIEL (Radiology Department);

JEFFREY S DESMOND (Emergency Medicine Admin); JAMES B

FROEHLICH (Internal Medicine Department); JOSEPH J GEMMETE

(Radiology Department); PETER K HENKE (Vascular Surgery Section);

VENKATARAMU N

KRISHNAMURTHY (Radiology Department); PAULA M NOVELLI

(Radiology Department); JOHN E RECTENWALD (Vascular Surgery

Section); JAMES SHIELDS

(Radiology Department); THOMAS W WAKEFIELD (Vascular Surgery

Section)

\$1,500 06/09/08 - 03/31/09

Washington University in St. Louis

Dominantly Inherited Alzheimer Network

ROBERT A KOEPPE (Radiology-Nuclear Medicine)

\$127,270 09/15/08 - 06/30/09

Washtenaw United Way

Community Dental Center (Comprehensive Dental Care for the Low-income)

DORIS JANE ALLEN (Community Dental Clinic)

\$3,506 07/01/08 - 09/30/08

Community Dental Center (Comprehensive dental care for the low-income)

DORIS JANE ALLEN (Community Dental Clinic)

\$10,520 10/01/08 - 06/30/09

Wayne State University

Spiritual Needs of Bereaved Parents

JOSEPH R CUSTER (Pediatrics-Intensive Care)

\$5,751 06/25/08 - 05/31/09

Whirlpool Corporation

Lean Research and Development

JEFFREY K LIKER (Industrial Operations)

\$41,455 07/01/06 - 06/30/09

ME 450 Mechanical Design - Fall 2008

ALBERT J SHIH (Mechanical Engineering)

\$2,900 09/01/08 - 12/31/08

Whiting Foundation

Ready to Learn, Michigan Television

JENNIFER BETH WHITE (Michigan Television)

\$15,000 07/01/08 - 06/30/09