

AWARDS ESTABLISHED
 Research and Other Sponsored Activities
 July 1, 2011 through August 31, 2011

**Received by the Regents
 September 15, 2011**

The awards detailed in this list were established July 1, 2011 through August 31, 2011. The dollar values depict the best available estimate of the funding the University should receive over the life of the award. These values may be modified, as additional data become available relative to future funding prospects. These modifications are not reported in the attached list. As a result, the dollar values of awards presented in this list will differ from the year-end totals. The full amount of an award is recorded in the year in which it was established. Often these funds are expended over several years, making comparisons between awards and expenditures somewhat misleading. Research expenditures are presented here to provide a trend line for the current fiscal year.

	Number of Awards FY 2011	Number of Awards FY 2012	% Change	Value of Awards FY 2011	Value of Awards FY 2012	% Change
Total Awards Processed (July-August)	592	608	2.7%	\$ 238,437,350	\$ 246,605,170	3.4%
Research Awards	432	418	-3.2%	\$ 190,173,633	\$ 223,003,293	17.3%
Research Training	57	58	1.8%	\$ 30,908,423	\$ 12,055,589	-61.0%
Other Sponsored Activity	103	132	28.2%	\$ 17,355,294	\$ 11,546,288	-33.5%
<hr/>						
Total Awards Processed Fiscal Year to Date	592	608	2.7%	\$ 238,437,350	\$ 246,605,170	3.4%
Research Awards	432	418	-3.2%	\$ 190,173,633	\$ 223,003,293	17.3%
Research Training	57	58	1.8%	\$ 30,908,423	\$ 12,055,589	-61.0%
Other Sponsored Activity	103	132	28.2%	\$ 17,355,294	\$ 11,546,288	-33.5%

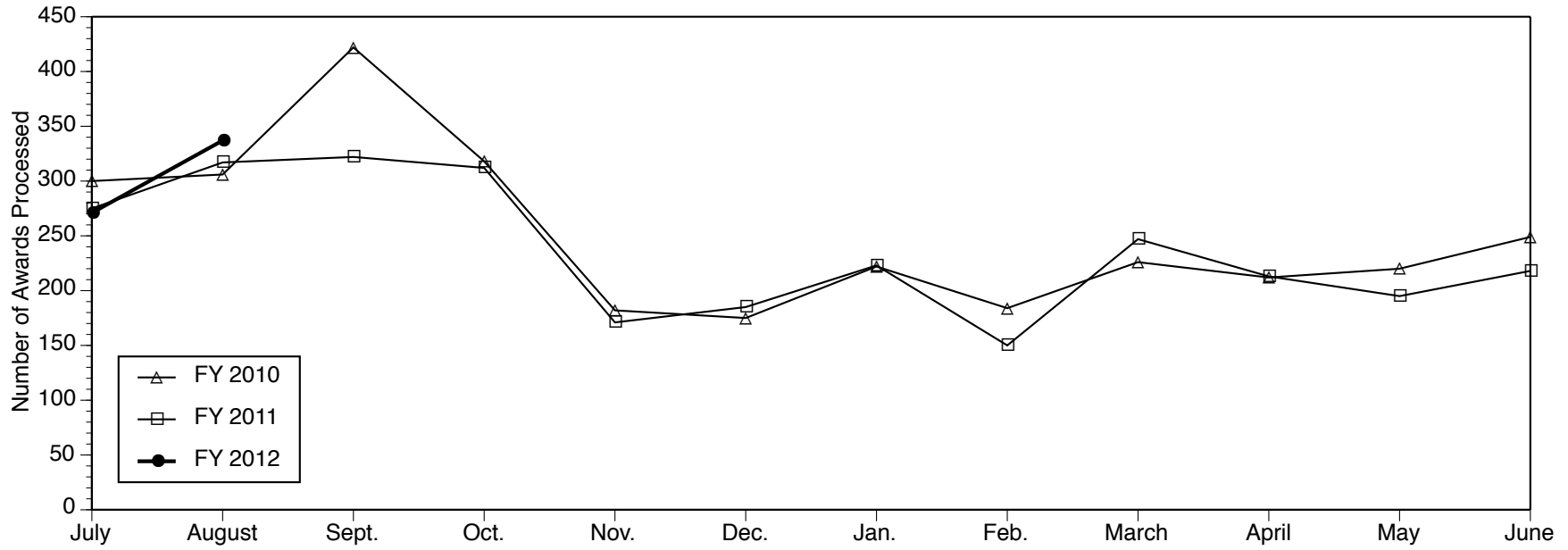
Total awards are up in terms of number and dollar value when comparing the first two months of FY 2012 with the same time period in FY 2011. Total awards processed in August 2011 increased over July 2011 activity creating an initial upward trend.

----- RESEARCH EXPENDITURES -----

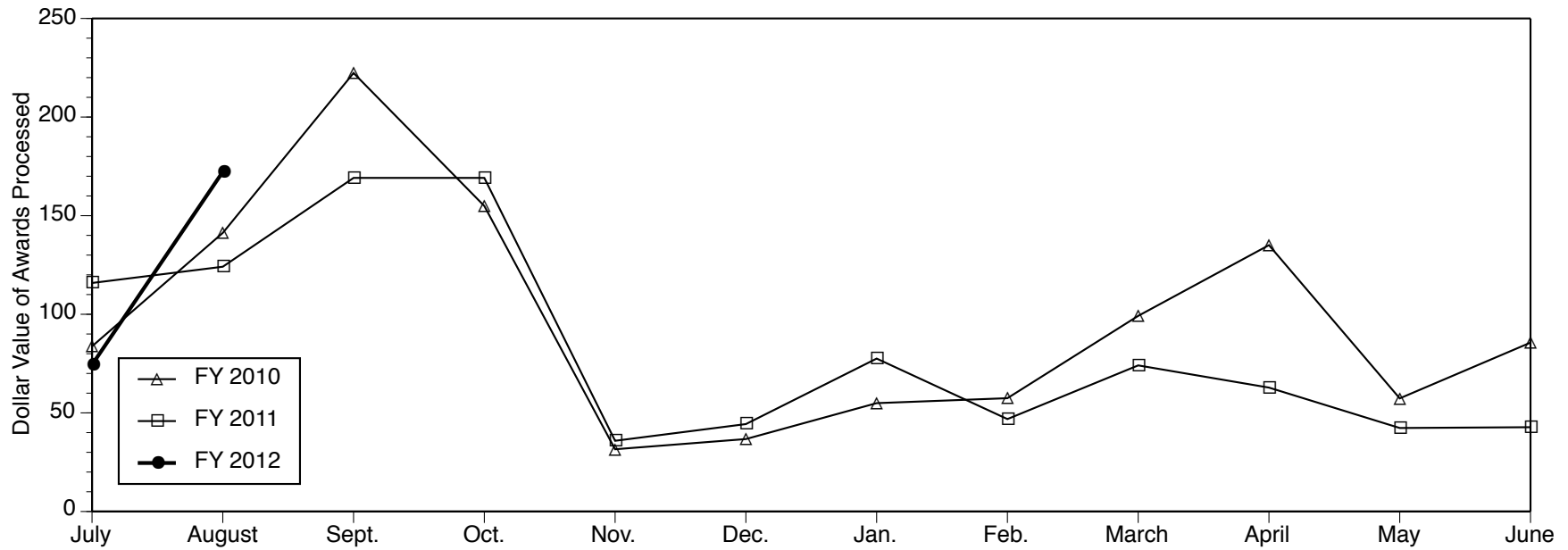
	Federal Expendable Restricted	Other Funds	Total Expenditures
July 2011	\$ 74,767,005	\$ 34,708,591	\$ 109,475,596
July 2010	\$ 76,286,953	\$ 27,242,009	\$ 103,528,962
Percent Change	-2.0%	27.4%	5.7%

Source: Division of Research Development and Administration

Number of Awards Processed



Dollar Value of Awards Processed



Data Source: Division of Research Development and Administration

AWARDS ESTABLISHED FOR RESEARCH AND OTHER SPONSORED ACTIVITIES

July 01, 2011 through August 31, 2011

The awards listed here by direct sponsor were established during the month designated in the heading above. For each award, the listing includes the award title, the principal investigator(s), the proposal administrative department, participating investigators with specified effort, the estimated amount awarded for the award period, and the estimated award period.

AB Science, S.A.

A 96-week, prospective, multicenter, randomised, double-blind, placebo-controlled, 2-parallel groups, Phase 3 study to compare efficacy and safety of masitinib 6mg/kg/day versus placebo in the treatment of patients with primary progressive or relapse-free secondary progressive multiple sclerosis

TIFFANY JOY BRALEY (Neurology Department)

\$121,577 07/01/2011 - 06/30/2016

Adolor

A Phase 4 Multicenter, Double-blind, Placebo-controlled, Parallel Study of Alvimopan for the Management of Postoperative Ileus in Subjects Undergoing Radical Cystectomy (patients 15 - 24)

CHERYL T LEE (Urology Surgery)

\$17,990 06/01/2011 - 05/31/2012

A Phase 4 Multicenter, Double-blind, Placebo-controlled, Parallel Study of Alvimopan for the Management of Postoperative Ileus in Subjects Undergoing Radical Cystectomy

CHERYL T LEE (Urology Surgery)

with ALON ZADOK WEIZER

KHALED S HAFEZ

\$24,669 08/01/2011 - 07/31/2013

A Foundation Building Strength for Nematine Myopathy

Drug Discovery in a Novel Vertebrate Model of Nematine Myopathy

JAMES DOWLING (Pediatrics-Neurology)

\$33,000 06/01/2011 - 05/31/2012

Agiltron

Roll to Roll Fabrication of Metamaterial Films with Reflectivity Control

L JAY GUO (COE EECS - ECE - SSEL)

\$30,000 07/01/2011 - 10/30/2011

Alion Science and Technology

Winter measurements for the NEXUS exposure and health study

STUART ARTHUR BATTERMAN (Environmental Health Sciences)

\$36,075 12/01/2010 - 03/31/2011

Allen Foundation, Inc., The

Ypsilanti Health Initiative Year 2 for FY11-12

SIMONE HIMBEAULT TAYLOR (Community Service Learning)

\$5,000 06/01/2011 - 05/01/2012

American Academy of Otolaryngology - Head & Neck Surgery Foundation, Inc.

STAT3 Inhibition for the Treatment of Head and Neck Cancer

THOMAS E CAREY (Kresge Hearing Research Inst)

\$10,000 07/01/2011 - 06/30/2012

Development of a cost-effective algorithm for evaluation of genetic hearing loss

MARCI M LESPERANCE (Kresge Hearing Research Inst)

\$25,000 07/01/2011 - 06/30/2012

American Association for the Surgery of Trauma

Electroporation mediated in-vivo Gene Delivery of the Na⁺/K⁺-ATPase pump improves Alveolar Fluid Clearance and Reduces Lung Injury in a mouse model of Lung Contusion

KRISHNAN RAGHAVENDRAN (GSA - Acute Care Surgery (ACS))

\$50,000 07/01/2011 - 06/30/2012

American Association of Orthodontists Foundation

AAOF Legacy Collection Project (Stage II)

JAMES A MCNAMARA JR (DENT Ortho/Peds Dentistry)

\$50,000 06/01/2011 - 05/31/2013

American Cancer Society

Patient and Provider Influences on Disparities in Colorectal Cancer Care

ARDEN M MORRIS (GSA - Veterans Affairs (VAH))

with MOUSUMI BANERJEE

SARAH T HAWLEY

STEVEN J KATZ

\$1,206,000 07/01/2011 - 06/30/2015

American College of Radiology

ACRN 6690: A Prospective, Multicenter Comparison of Multiphase Contrast-Enhanced CT and Multiphase Contrast-Enhanced MRI for Diagnosis of Hepatocellular Carcinoma and Liver Transplant Allocation

HERO K HUSSAIN (Department of Radiology)

\$336,259 05/01/2011 - 04/30/2013

American Council of Learned Societies

American Council of Learned Societies Faculty Fellowship - James Hoesterey

ALLEN D HICKEN (LSA II: SE Asian Studies)

\$74,334 08/01/2011 - 07/31/2013

American Dental Education Association

Evaluate the use of Microsoft Xbox 360 Kinect in dental anatomy and radiology education

WISAM AL-RAWI (DENT Periodontics and Oral Med)

\$7,650 06/01/2011 - 05/31/2012

American Diabetes Association, Inc.

Molecular basis and control of endocrine determination by the presenilins

CORENTIN MICHEL HERVE CRAS-MENEUR (Metabolism, Endo & Diabetes)

\$131,100 07/01/2011 - 06/30/2014

The Impact of the Metabolic Syndrome on the Incidence of Neuropathy in Obese Subjects

BRIAN CHRISTOPHER CALLAGHAN (Neurology Department)

\$131,033 07/01/2011 - 06/30/2012

Evaluation of Diabetic Retinal Sensory Neuropathy

THOMAS GARDNER (Ophthalmology & Visual Science)

\$63,264 07/01/2011 - 06/30/2012

Cell biology of insulin action

ALAN R SALTIEL (Life Sciences Institute-Admin)

\$42,750 07/01/2011 - 06/30/2012

American Heart Association, Midwest Affiliate

Correlates of Missed Opportunities for Transcranial Doppler Screening Among Children with Sickle Cell Disease

LYNDA DIANE LISABETH (Epidemiology Department)

\$52,000 07/01/2011 - 06/30/2013

Functional dissociation of proopiomelanocortin neurons: role in metabolism and cardiovascular physiology

MALCOLM J LOW (Molec & Integrative Physiology)

\$90,772 07/01/2011 - 06/30/2013

American Pediatric Surgical Association Foundation (APSAF)

Mesenchymal stem cell regulation of fetal lung development in diaphragmatic hernia

SHAUN KUNISAKI (Pediatric Surgery Section)

\$25,000 06/01/2011 - 05/31/2012

American Psychiatric Association

American Psychiatric Association/Substance Abuse Mental Health Service Administration Minority Fellowship - Alan Teo

RODNEY A HAYWARD (Int Med-General Medicine)

\$16,153 07/01/2011 - 06/30/2012

American Society of Civil Engineers (ASCE)

ASCE Journal Editorship

SHERIF EL-TAWIL (Civil & Environmental Engr)

\$23,364 11/15/2010 - 11/14/2012

American Society of Hematology

The role of the MLL-PAF_c interaction and MLL ubiquitination in leukemia

JAY L HESS (Pathology Department)

\$100,000 07/01/2011 - 06/30/2014

American Society of Nephrology, The (ASN)

MicroRNA-21 in Renal Aging

MARKUS BITZER (Int Med-Nephrology)

\$50,000 07/01/2011 - 06/30/2013

Amgen, Inc.

Nanoindentation and Raman Spectroscopy of Aging Mouse Bone

KENNETH MICHAEL KOZLOFF (Orthopaedic Surgery)

with MICHAEL D MORRIS

\$42,399 09/01/2011 - 08/31/2012

Ann Arbor Area Community Foundation

AAACF - Counseling for Caregivers

SHARON A REDMER (UMH Housing Bureau/Gifts)

with JUSTINE BYKOWSKI

\$15,695 06/30/2011 - 06/29/2012

AAACF Post-Foreclosure Assistance for Seniors

SHARON A REDMER (UMH Housing Bureau/Gifts)

with CHERI NALEPA

\$8,388 06/30/2011 - 06/29/2012

Ann Arbor, City of

Housing Bureau for Seniors - Ann Arbor Housing Trust Fund - Tax & Mortgage Foreclosure Prevention

SHARON A REDMER (UMH Housing Bureau/Gifts)

\$30,001 07/01/2011 - 06/30/2012

Aquest Corporation

Evaluation of the Awfuchs Community Associated with Water Celery Populations in Lake Ogemaw, Ogemaw County, MI

JERRY D SANDERS (Flint Biology)

\$6,963 07/18/2011 - 09/01/2011

Arbitron, Inc.

Arbitron 2011 Agreement for Consulting Services

RICHARD L VALLIANT (SRC-Survey Methodology Prog)

\$70,318 01/01/2011 - 12/31/2011

Arbor Photonics, Inc

Optimization of Chirped Volume Bragg Grating Compressor for Broad Band Fiber Chirped Pulse Amplification System

ALMANTAS GALVANAUSKAS (COE EECS - ECE - USL)

\$8,670 05/15/2011 - 06/15/2011

Ardelyx, Inc.

Protocol No. RDX5791-201: A Randomized, Double-Blind, Placebo-Controlled Study to Assess the Safety and Efficacy of RDX5791 for the Treatment of Constipation-Predominant Irritable Bowel Syndrome (IBS-C)

WILLIAM D CHEY (Int Med-Gastroenterology)

\$44,414 05/17/2011 - 05/31/2012

Area Agency on Aging - Michigan

AAA 1-B NSIP Contract FY 2012

SHARON A REDMER (UMH AA Meals on Wheels - Gifts)

\$61,600 10/01/2011 - 09/30/2012

Arizona, State of

Project IDEAL State Membership Arizona Yr.10

JEROME JOHNSTON (RCGD-Communication/Education)

\$10,500 10/01/2011 - 09/30/2012

Arizona State University

Development of New Item Clusters for the HOME Inventory

PAMELA DAVIS-KEAN (RCGD-General Research)

\$153,455 04/01/2011 - 03/31/2013

Ascentage Pharma Group

Design and development of new anticancer drugs

SHAOMENG WANG (Int Med-Hematology/Oncology)

with LIU LIU

\$599,485 05/01/2011 - 05/31/2012

Ascenta Therapeutics

Phase I Dose Escalation Study of The Safety, Tolerability, Pharmacokinetics, And Pharmacodynamic Properties Of Oral At-406 in Combination With Daunorubicin And Cytarabine In Patients With Poor-Risk, Acute Myelogenous Leukemia (AML)

HARRY P ERBA (Int Med-Hematology/Oncology)

with DALE LEE BIXBY

\$130,421 07/01/2011 - 06/30/2014

Astellas Pharma US, Inc.

Development of a Fungal Antibiogram for the University of Michigan Hospitals

PEGGY L CARVER (PHARMACY Clin, Soc & Admin Sci)

\$84,956 08/02/2011 - 08/01/2012

Bausch & Lomb Inc

Treatment of Ocular Graft-versus-Host Disease (GVHD) with Topical Loteprednol Etabonate 0.5%

SHAHZAD I MIAN (Ophthalmology & Visual Science)

\$88,711 07/01/2011 - 06/30/2012

Bayer Corporation

Open-label, multi center PET/CT (positron emission tomography/computed tomography) study for investigation of safety, tolerability, biodistribution and diagnostic performance of the 18F labeled PET tracer BAY 1075553 following a single intravenous administration of 300 MBq in patients with prostate cancer as well as radiation dosimetry, plasma pharmacokinetics, biodistribution, safety and tolerability of the tracer in PET/CT in healthy volunteers.

MORAND RUEDIGER PIERT (Department of Radiology)

with BING MA

\$203,840 03/08/2011 - 06/30/2012

Randomized, double-blind, placebo-controlled, multi-centre, multi-national study to evaluate the efficacy and safety of oral BAY 63 2521 (1 mg, 1.5 mg, 2 mg, or 2.5 mg tid) in patients with symptomatic Pulmonary Arterial Hypertension (PAH)- PATENT-1 Study

VALLERIE MCLAUGHLIN (Int Med-Cardiology)

with MELVYN RUBENFIRE

\$108,332 08/01/2011 - 07/31/2012

An open-label, non-randomized Phase I study of regorafenib (BAY 73-4506) to evaluate cardiovascular safety, tolerability, pharmacokinetics and anti-tumor activity in patients with advanced solid tumors #Protocol 14814

DAVID C SMITH (CTO-Phase 1)

\$488,681 03/03/2011 - 06/10/2013

Long-term extension, multi-centre, multi-national study to evaluate the safety and tolerability of oral BAY 63 2521 (1 mg, 1.5 mg, 2 mg, or 2.5 mg tid) in patients with symptomatic Pulmonary Arterial Hypertension (PAH). PATENT-2 Study

VALLERIE MCLAUGHLIN (Int Med-Cardiology)

with MELVYN RUBENFIRE

\$142,539 08/01/2011 - 07/31/2014

Multicenter, open-label study to evaluate the safety and efficacy (by blinded reading) of contrast-enhanced magnetic resonance angiography (MRA) after a single intravenous injection of 0.1 mmol/kg gadobutrol in subjects with known or suspected vascular disease of the supra-aortic vessels

GAURANG V SHAH (Department of Radiology)

\$130,052 08/14/2011 - 07/13/2013

Baylor College of Medicine

Adult Neurobehavioral Late Effects of Pediatric Low Grade Brain Tumors

BRUNO J GIORDANI (Psychiatry-Neuropsychology)

\$6,967 05/01/2011 - 04/30/2012

Baylor Research Institute

From NSQIP to TQIP - Trauma Quality Improvement Project

MARK RICHARD HEMMILA (GSA - Administration (GSA/ADM))

\$20,495 02/01/2012 - 07/31/2012

Biomedware

Internet-based Health Evaluation and Assessment Tool (I-HEAT) Feasibility Study

MARIE SYLVIA O'NEILL (Environmental Health Sciences)

\$14,437 06/23/2011 - 06/22/2012

Bishop, A.G., Trust

Early Childhood Development Center Cribs and Furniture

ROBERT W BARNETT (Flint ECDC)

\$5,000 07/11/2011 - 12/31/2011

Blue Cross Blue Shield Kansas City

Blue Cross Blue Shield Kansas City Health Risk Appraisals

DEE W EDINGTON (Health Management Research Ctr)

\$498,000 05/01/2011 - 04/30/2013

Blue Cross Blue Shield of Michigan Foundation

Patient perspectives on self-disclosure versus use of a urine dipstick for detection of tobacco smoking during pregnancy (abbreviated title: Detection of Tobacco Smoking during Pregnancy)

KATHERINE JO GOLD (Family Medicine)

with JORGE DELVA

\$10,000 05/01/2011 - 04/30/2012

Parents? Priorities for Enhanced Access to the Pediatric Medical Home

LISA PROSSER (Pediatrics-Ambulatory Care Pgm)

\$59,005 09/05/2011 - 09/04/2012

Treadmill Training for Infants Born with Spina Bifida

BEVERLY D ULRICH (School of Kinesiology)

\$149,380 09/01/2011 - 08/31/2013

An Intervention to Increase Nursing Teamwork and Decrease Missed Nursing Care

BEATRICE J KALISCH (SON-Grants)

with DAVID L RONIS

\$100,000 09/01/2011 - 08/31/2012

Boston Scientific Foundation

EP Fellowship (Boston Scientific Foundation) 2011-2012

FRANK PELOSI JR (Int Med-Cardiology)

\$40,000 07/01/2011 - 06/30/2012

Breast Cancer Research Foundation, The

Pharmacogenomic Predictors of Breast Cancer Endocrine Response

JAMES M RAE (Int Med-Hematology/Oncology)

with DANIEL F HAYES

\$225,000 10/01/2011 - 09/30/2012

Targeting RhoC in Breast Cancer: Novel Drugs, Mathematical Models and Epidemiological Studies in North Africa

SOFIA D MERAJVER (Int Med-Hematology/Oncology)

\$225,000 10/01/2011 - 09/30/2012

Financial Support for the Breast Cancer Intergroup Correlative Science Studies

DANIEL F HAYES (Int Med-Hematology/Oncology)

\$350,000 10/01/2011 - 09/30/2012

California Table Grape Commission

Multi-Organ Profiling of the Anti-Inflammatory Effects of Grape Intake

STEVEN F BOLLING (Cardiac Surgery Section)

with MITCHELL SEYMOUR

\$30,000 09/01/2011 - 08/31/2012

Cancer Research Institute

TINTEGRATION OF THE TRANSCRIPTIONAL NETWORK THAT REGULATES Gata3 DURING T LYMPHOCYTE DEVELOPMENT

JAMES DOUGLAS ENGEL (Cell and Developmental Biology)

\$95,000 07/01/2011 - 06/30/2013

Capital One

Capital One Partner Agreement 7-27-11 thru 7-26-12

JEANNE P MURABITO (CoE Eng Career Resource Center)

\$2,500 07/27/2011 - 07/26/2012

Cardiovascular Medical Research & Education Fund

Cardiovascular Medicine Research and Education Fund Data Coordinating Center (CMREF DCC) Continuation Funding

VALLERIE MCLAUGHLIN (Int Med-Cardiology)

with KIM ALLEN EAGLE

MELVYN RUBENFIRE

\$1,200,006 04/01/2011 - 03/31/2015

Carnegie-Mellon University

Smart Manufacturing Adapting Rapidly to product Variants (SMARTV)

KAZUHIRO SAITOU (Mechanical Engineering)

with WENCAI WANG

\$253,717 05/20/2011 - 03/21/2012

Carolus Therapeutics, Inc

Preliminary evaluation of the effects of CT-2009 on bleomycin-induced lung injury and fibrosis.

SEM H PHAN (Pathology Department)

\$79,305 07/22/2011 - 01/31/2012

Catholic Social Services

Adult Day Services - Supplies Supplement

BARBRA LINK (UMH Silver Club Programs)

\$9,112 06/10/2011 - 09/30/2011

Cephalon, Inc.

Cephalon 3075-An open-label long-term study of the safety and tolerability of repeated administration of CEP-33457 in patients with systemic lupus erythematosus

PATRICIA CLAUDIA CAGNOLI (Int Med-Rheumatology)

with WILLIAM J MCCUNE

\$92,338 03/28/2011 - 09/30/2012

CFD Research Corporation

SBIR Phase II: Modeling of Ablation Caused By Hypersonic Flow

IAIN D BOYD (Aerospace Engineering)

\$14,000 06/01/2011 - 05/31/2013

Chiang Ching-Kou Foundation

Yuen Ang - Budgetary Politics In Local China: A Mixed Methods Approach

YUEN YUEN ANG (LSA Political Science)

\$20,632 06/01/2011 - 12/30/2013

Child Neurology Foundation

Drug Discovery in a Novel Vertebrate Model of Nematine Myopathy

JAMES DOWLING (Pediatrics-Neurology)

\$20,000 11/01/2011 - 10/31/2012

Children's Hospital of Los Angeles

NANT N2008-02: Phase I study of vorinostat in combination with 13-cis-retinoic acid in patients with refractory/recurrent neuroblastoma

GREGORY A YANIK (Pediatrics-Hematology/Oncology)

\$7,020 07/01/2011 - 05/31/2012

Children's Research Institute

BPCA Pediatric Off-Patent Drug Studies (PODS) Lorazepam-Status Epilepticus

RACHEL M STANLEY (Emergency Medicine UM CES)

\$1,146 09/01/2010 - 08/31/2011

Citizens United for Research in Epilepsy (CURE)

Cardiac Mechanisms of SUDEP in Dravet Syndrome

JACK M PARENT (Neurology Department)

\$100,000 09/01/2011 - 08/31/2012

Colgate-Palmolive Company

Dentin Hypersensitivity-related Quality of Life ?

Developing a Reliable and Valid Measurement Instrument

ROBERT A BAGRAMIAN (DENT Periodontics and Oral Med)

with HENRY J TEMPLE

MARITA ROHR INGLEHART

\$109,969 01/27/2011 - 11/30/2011

Colgate Master Agreement

PETER J POLVERINI (DENT Dean's Office&Fac Affairs)

\$900,000 05/01/2011 - 04/30/2014

Columbia University

Sequence Analysis in a Potentially Bipolar-Disorder Associated Region of 8q24

MARGIT BURMEISTER (Molecular & Behav Neurosc Inst)

\$10,000 06/01/2009 - 11/01/2010

Discovering and explaining technical emergence through analysis of the language and structure of scientific publications

DRAGOMIR RADKOV RADEV (COE EECS - CSE - AI)

\$379,988 08/08/2011 - 02/07/2013

ATLAS Great Lakes Tier 2 Center (for the period of 6/1/11-9/30/11)

SHAWN P MCKEE (LSA Physics)

\$272,748 06/01/2011 - 09/30/2011

Maintenance and Operation of the WBS 3.5.1 Muon System (for funding period 6/1/11-9/30/11)

BING ZHOU (LSA Physics)

\$71,348 06/01/2011 - 09/30/2011

Commerce, Department of-National Oceanic and Atmospheric Administration

Ship Time 2011 - Michigan Sea Grant

JENNIFER READ (SNRE Michigan Sea Grant)

\$55,100 07/01/2011 - 06/30/2012

Implications of changing sea ice on phytoplankton and zooplankton biomass and community structure in the Bering Sea

ALLEN BURTON (SNRE CILER)

\$30,874 07/01/2011 - 03/31/2012

Great Lakes CoastWatch Research Assistant for NOAA CoastWatch Program Element

ALLEN BURTON (SNRE CILER)

\$90,570 07/01/2011 - 06/30/2012

Quantifying the Value of the Great Lakes for Michigan's Tourism and Recreation Industries

JENNIFER READ (SNRE Michigan Sea Grant)

\$20,000 09/01/2011 - 08/31/2012

Commerce, Department of-Office of the Secretary

Great Lakes Trade Adjustment Assistance Center (GLTAAC) 7/11 - 6/12

SCOTT DAVID JACOBS (IRLEE)

\$1,429,148 07/01/2011 - 06/30/2012

Common Solutions Group, The

CSG Secretariat 2011-2012

CHARLES J ANTONELLI (ITS Com OpsMgt (Cost Alloc))

\$34,283 07/01/2011 - 06/30/2012

Community Foundation for Southeastern Michigan

CFSEM America Reads Tutoring Corps 2011

SIMONE HIMBEAULT TAYLOR (Community Service Learning)

\$56,000 06/15/2011 - 06/14/2012

Community Legal Resources

Detroit Vacant Property Campaign, A Revitalization Initiative

MARGARET E DEWAR (Urban Planning)

\$5,000 07/01/2011 - 12/31/2011

Congress of Neurological Surgeons (CNS)

A model-based simulator for teaching minimally invasive microdiscectomy

STEPHEN E SULLIVAN (Neurosurgery)

\$15,000 07/01/2011 - 06/30/2012

The Regulatory Role of MicroRNA in Malignant Gliomas and their Use as Tumor Biomarkers

KARIN M MURASZKO (Neurosurgery)

\$20,000 07/01/2011 - 06/30/2012

Cornell University

NNIN-2011 Combined "Undergraduate Research Interns and LEF Participants

KHALIL NAJAFI (COE EECS - ECE - SSEL)

\$58,000 03/01/2011 - 11/30/2011

Crim Fitness Foundation

UM-Flint Back to School Smart Commute Event

GREG RYBARCZYK (Flint Recreational Services)

\$1,000 06/17/2011 - 10/31/2011

Cystic Fibrosis Foundation

Screening Improvement Program (SIP) for Reducing the Rate of Inadequate Sweat Testing (QNS) across Michigan CF Care Centers

SAMYA Z NASR (Pediatrics-Pulmonary Medicine)

\$43,200 08/01/2011 - 07/31/2013

Cystic Fibrosis Center Grant 2011-2012

SAMYA Z NASR (Pediatrics-Pulmonary Medicine)

\$206,670 07/01/2011 - 06/30/2012

Cystinosis Research Network

Feasibility of Cystinosis Replacement Therapy in Cystinosis

JESS G THOENE (Pediatrics-Genetics)

with THOMAS L SAUNDERS

\$202,500 09/01/2011 - 02/28/2013

Cytokine PharmaSciences, Inc.

The EXPEDITE Study: A phase III, double blind, randomized, multicenter study of EXogenous Prostaglandin comparing the Efficacy and safety of the Misoprostol Vaginal Insert(MVI)200 mcg to the Dinoprostone vaginal Insert for reducing Time to vaginal delivery

ELLEN L MOZURKEWICH (Obstetrics and Gynecology Dept)

\$16,000 08/01/2011 - 11/30/2011

Defense, Department of-Air Force, Department of the

Unsteady Output-Based Adaptive Simulation of Separated and Transitional Flows

KRZYSZTOF J FIDKOWSKI (Aerospace Engineering)

\$353,632 05/15/2011 - 05/14/2014

Information Processing and Collective Behavior in a Neuronal Model System

DANIEL BARCLAY FORGER (LSA Mathematics)

\$783,212 07/15/2011 - 07/14/2015

Nonlinear Optics Symposium at the University of Michigan

HERBERT GRAVES WINFUL (COE EECS - ECE - OPT)

with ROBERTO D MERLIN

\$10,000 08/01/2011 - 01/31/2012

Michigan/AFRL Collaborative Center in Control Sciences (MACCCS)

ANOUCK RENEE GIRARD (Aerospace Engineering)

with JAMES F DRISCOLL

PIERRE TSHIMANGA KABAMBA

\$4,000,000 04/18/2007 - 09/30/2015

Discontinuous Galerkin for Navier-Stokes

BRAM VAN LEER (Aerospace Engineering)

\$228,616 08/15/2011 - 02/14/2013

RECHARGE: Wright Patterson Air Base Lurie Nanofabrication Lab

EUISIK YOON (COE EECS - ECE - SSEL)

\$100,000 06/01/2011 - 05/30/2012

Model-based Flight Control Design for Highly Maneuverable Flapping-wing MAVs

ANOUCK RENEE GIRARD (Aerospace Engineering)

\$81,031 01/01/2010 - 12/31/2010

Defense, Department of-Army, Department of the

Targeting Prostate Cancer with Bifunctional Modulators of the Androgen Receptor

ANNA K MAPP (LSA Chemistry)

\$662,362 09/30/2011 - 10/29/2014

National Functional Genomics Center--A Center for Genetic Origins of Cancer (CGOC) at the University of Michigan

MAX S WICHA (Univ of Mich Cancer Center)

with ARUL M CHINNAIYAN
CHANDAN KUMAR
DIANE M SIMEONE
ERIC R FEARON
HASAN KORKAYA
KATHLEEN R CHO
MARTHA JANE LARSEN

\$1,748,000 06/15/2011 - 06/14/2012

Micro- and Nanostructural Effects on the Performance of Inorganic Eutectic Solar Cells

AKRAM BOUKAI (Materials Science & Engin.)

\$50,000 07/01/2011 - 03/31/2012

MURI: Value-centered Information Theory for Adaptive Learning, Inference, Tracking, and Exploitation (VITALITE)

ALFRED O HERO III (COE EECS - ECE - Cspl)

with RAJESH RAO NADAKUDITI

\$3,750,000 08/22/2011 - 08/21/2014

Understanding the Interaction of Peptides and Proteins with Abiotic Surfaces: Towards Water-Free Biologics

ZHAN CHEN (LSA Chemistry)

with CHARLES L BROOKS III
E NEIL G MARSH
JOERG LAHANN

\$3,750,000 08/04/2011 - 08/03/2014

PhScN, a Potent Systemic Therapy for Human Breast Cancer that Targets Alpha5 Beta1 Integrin to Prevent Metastatic Invasion, Survival, and Tumorigenesis

DONNA L LIVANT (Radiation Oncology - Can Bio)

\$583,125 08/15/2011 - 09/14/2013

A workshop proposal to ARO: "Sensor information estimation and exploitation"

ALFRED O HERO III (COE EECS - ECE - Cspl)

with RAJESH RAO NADAKUDITI

\$28,467 07/01/2011 - 12/31/2011

Defense, Department of-Defense Threat Reduction Agency

Suppression of Interface-induced Noise by the Control of Electron-Phonon Interactions

MARK DAVID HAMMIG (Nuclear Eng & Radiological Sci)

\$469,982 07/25/2011 - 07/24/2014

Generation of Miniature Hohlraum Xray Sources Using Intense Lasers

KARL MICHAEL KRUSHELNICK (COE EECS - ECE - USL)

with ALEXANDER GEORGE ROY THOMAS
ANATOLY M MAKSIMCHUK
VICTOR P YANOVSKY

\$1,065,120 08/22/2011 - 08/21/2014

Defense, Department of-Navy, Department of the

Development of Sum Frequency Generation Fiber Optical Instrument to Study Biofouling

ZHAN CHEN (LSA Chemistry)

\$239,950 06/15/2011 - 06/14/2012

DURIP: C-Band Amplifier and Lasers for Fundamental Studies on Ge-based Plasmonic Photomixers

MONA JARRAHI (COE EECS - ECE - Rad)

\$76,181 06/28/2011 - 06/27/2012

A Three-Dimensional Motion Capture System for the Unsteady Deformation of Flexible Marine Structures

STEVEN FRANCIS ZALEK (Naval Arch & Marine Dept)

\$118,264 06/21/2011 - 05/20/2012

A Real-Time Wave Sensing and Ship Motion Prediction System

ROBERT F BECK (Naval Arch & Marine Dept)

with DAVID R LYZENGA

OKEY NWOGU

\$350,000 07/05/2011 - 07/04/2016

Computational Neuromarkers

ZEESHAN HASSAN SYED (COE EECS - CSE - AI)

\$297,679 08/08/2011 - 08/07/2013

Stochastic Environments Leading to Design Responses in Nonlinear Seakeeping Simulations

ARMIN W TROESCH (Naval Arch & Marine Dept)

\$765,167 07/01/2011 - 06/30/2015

Hydroelastic Response of Adaptive Seals and Advanced Naval Platforms

YIN LU YOUNG (Naval Arch & Marine Dept)

\$652,117 07/15/2011 - 08/31/2016

Energy Cycling and Efficiency Improvement for Electrical Propulsion Systems with Hybrid Energy Storage

JING SUN (Naval Arch & Marine Dept)

with HEATH HOFMANN

\$900,253 07/01/2011 - 08/31/2014

Numerical Investigation of Fluid-Structure Phenomena Related to Advanced Naval Vessels

KEVIN JOHN MAKI (Naval Arch & Marine Dept)

\$599,447 07/01/2011 - 06/30/2014

Preliminary Ship Design General Arrangements Naval International Cooperative Opportunities in Science & Technology Program (NICOP) Project

DAVID JACOB SINGER (Naval Arch & Marine Dept)

\$352,873 07/15/2011 - 09/30/2014

Analysis and Optimization of 3-D Supercavitating Hydrofoils

YIN LU YOUNG (Naval Arch & Marine Dept)

\$74,505 06/01/2011 - 07/31/2013

Charaterization of Sound-Mechanisms of Supersonic Jets Using Biglobal Stability Analysis

MATTHIAS IHME (Aerospace Engineering)

\$22,500 05/01/2010 - 04/30/2013

Information Sharing Approaches for Robust Optimization of Early Stage Structural Material and Design Decisions for T-Craft

MATTHEW DAVID COLLETTE (Naval Arch & Marine Dept)

\$523,538 07/01/2011 - 06/30/2014

Delta Dental Fund

Periodontal Treatment and Medical Care Costs in an Insured Group (Delta Dental Plan/Michigan State University Employees) - Continuation of Funding

GEORGE WESLEY TAYLOR (DENTCariology,Restor Sci &Endo)

with MICHAEL CAREY MANZ

TAMMIE ANN NAHRA

\$64,535 06/01/2011 - 12/31/2011

Dorot Foundation

Ypsilanti Health Initiative partnering with Town Center Place

SIMONE HIMBEAULT TAYLOR (Community Service Learning)

\$500 01/01/2011 - 05/31/2011

Duke, Doris, Charitable Foundation

Epigenetic characterization of the progressive vs. stable Myelodysplastic syndromes (MDS)

MARIA FIGUEROA (Pathology Department)

\$486,000 07/01/2011 - 06/30/2014

Duke University

ACOSOG Competing Renewal

GERARD M DOHERTY (GSA - Endocrine Surgery (END))

\$6,500 12/01/2010 - 11/30/2011

Dyax Corporation

A Phase 4, Long Term Observational Safety Study to Evaluate Immunogenicity and Hypersensitivity with Exposure to KALBITOR (ecallantide) for the Treatment of Acute Attacks of HAE

ALAN PETER-PERCY BAPTIST (Int Med-Allergy)

\$58,391 08/11/2011 - 05/31/2015

Dystonia Medical Research Foundation

Defining the parameters of torsinA function in neural development

WILLIAM TODD DAUER (Neurology Department)

\$50,000 04/15/2011 - 04/14/2012

EcoMotors

*System Level Optimization for Complex Mechanical Systems
- OPOC Engine System*

YUBAO CHEN (Dbn Col of Eng-Indust & Sys En)

\$75,886 06/24/2011 - 06/30/2012

Edington and Associates, LLC

Edington Associates, LLC using Surveys, Measurement and Evaluation services and HRA processing

LOUIS TZE-CHING YEN (Health Management Research Ctr)

\$30,000 07/21/2011 - 07/20/2012

Educational Advancement Foundation, The

Learning to Teach College Mathematics with Inquiry-Based Learning

VILMA M MESA (SOE-Educational Studies)

\$45,504 09/01/2011 - 08/31/2013

Ellison Medical Foundation

Investigating the Role of Reactivation of the Inactive X-chromosome in Mammalian Aging

SUNDEEP KALANTRY (Human Genetics Department)

\$400,000 07/01/2011 - 06/30/2015

Energy, Department of

Two-Dimensional Electronic Spectroscopies for Probing Electronic Structure and Charge Transfer: Applications to Photosystem II

JENNIFER OGILVIE (LSA Physics)

\$240,290 06/01/2011 - 06/30/2012

Multi-scale Multi-physics Methods Development for the Calculation of Hot-spots in the NGNP

THOMAS J DOWNAR (Nuclear Eng & Radiological Sci)

\$56,500 10/01/2009 - 09/30/2012

Environmental Protection Agency

Green Marina Education and Outreach Project, Phase II

JAMES STEPHEN DIANA (SNRE Michigan Sea Grant)

with ELIZABETH LAPORTE

\$199,921 11/01/2011 - 10/31/2013

Epilepsy Research Foundation

Role of dentate gyrus neurogenesis in epileptogenesis

JACK M PARENT (Neurology Department)

\$20,000 07/01/2011 - 06/30/2012

EPIR, Ltd.

HgCdTe and Metallic Superlattice-Based Thermoelectric Coolers

KEVIN PATRICK PIPE (Mechanical Engineering)

\$20,000 02/01/2011 - 07/31/2011

ERC, Inc.

Hygro Responsive Materials

ANISH TUTEJA (Materials Science & Engin.)

\$10,000 07/11/2011 - 09/30/2011

Federal Reserve System

Household Financial Behavior - 2011 Supplement

RICHARD T CURTIN (SRC-Surveys of Consumers)

\$26,705 01/01/2011 - 12/31/2011

Household Financial Behavior - 2010 Supplement

RICHARD T CURTIN (SRC-Surveys of Consumers)

\$67,743 01/01/2010 - 12/31/2010

Fenway Community Health Center

Educational Programs for Population Research in LGBT Health

WILLIAM G JACOBY (ICPSR-Education)

\$22,229 07/01/2010 - 05/31/2012

Fibromuscular Dysplasia Society of America

Fibromuscular Dysplasia Patient Registry

JAMES B FROEHLICH (Int Med-Cardiology)

\$40,000 02/01/2011 - 01/31/2012

Fight for Sight, Inc.

Detailed analysis of crystallins cellular and sub-cellular upregulation during diabetic retinopathy

PATRICE ELIE FORT (Ophthalmology & Visual Science)

\$20,000 07/01/2011 - 06/30/2012

Flinn, Ethel and James, Foundation

Depression Disease Management Support in the Community Primary Care Setting

MICHAEL S KLINKMAN (Family Medicine)

with KEVIN B KERBER

\$40,000 01/01/2011 - 12/31/2011

Florida, State of

DEP Contract SP673-Mercury TMDL Task Assignment 5 - Atmospheric and Aquatic Modeling

JOSEPH T DVONCH (Environmental Health Sciences)

with FRANK JOSEPH MARSIK

MASAKO MORISHITA

SANFORD SILLMAN

\$318,994 07/01/2011 - 06/30/2012

Contract SP-673 Freshwater Mercury TMDL Task #5

JOSEPH T DVONCH (Environmental Health Sciences)

\$26,195 07/01/2011 - 06/30/2012

Contract SP-673 Freshwater Mercury TMDL - Task #7

JOSEPH T DVONCH (Environmental Health Sciences)

with FRANK JOSEPH MARSIK

SANFORD SILLMAN

\$231,230 07/01/2011 - 06/30/2012

Foote Health Systems

Foote Hospital d/b/a Allegiance Health

DEE W EDINGTON (Health Management Research Ctr)

\$37,500 09/01/2011 - 08/31/2012

Ford Foundation

International Conference on Chinese Women and Visual Representation

ZHENG WANG (Inst/Research Women & Gender)

\$39,000 06/01/2011 - 07/31/2012

Ford Motor Company

2011-2012 Ford URP: Physiological Measures and Signature of Driver Behavior.

YI LU MURPHEY (Dbn Col of Eng-Electric & Comp)

\$40,000 07/01/2011 - 06/30/2012

The Trade off Between Public Transportation & Private Vehicle Ownership in the China Market

FRED M FEINBERG (ROSS SCH Research Support)

\$2,000 06/23/2011 - 09/02/2011

Design Tools to Optimize Vehicle Ingress/Egress for Small Cars

MATTHEW PAUL REED (UMTRI-Biosciences)

\$40,000 07/01/2011 - 06/30/2013

Forsyth Institute, The

Biomarkers of Periodontal Disease Progression

WILLIAM V GIANNOBILE (DENT Periodontics and Oral Med)

with JANET SUE KINNEY

\$480,032 09/27/2010 - 05/31/2011

Foundation for Child Development

PreK-3rd Data Resource Center

AMY PIENTA (ICPSR-Archival Development)

\$29,320 07/01/2011 - 06/30/2012

Gates, Bill and Melinda, Foundation

Measures of Effective Teaching (MET) Longitudinal Database

GEORGE CHARLES ALTER (ICPSR-Admin)

with BRIAN P ROWAN

KARA M SUZUKA

NANCY Y MCGOVERN

\$1,297,627 08/03/2011 - 06/30/2013

The Gates Millennium and Washington Scholars Longitudinal Studies Project

JOHN A GARCIA (ICPSR-Archival Development)

with LYNETTE F HOELTER

PETER A GRANDA

\$7,122 07/01/2011 - 11/30/2011

GE Global Research

Determination of Skin Friction Coefficient for Various Surfaces Test

MARC PERLIN (Naval Arch & Marine Dept)

\$14,647 07/18/2011 - 12/30/2011

Geistlich Pharma AG: Biomaterials

Development of an in vitro model for human gingival augmentation

WILLIAM V GIANNOBILE (DENT Periodontics and Oral Med)

with QIMING JIN

\$195,000 08/24/2011 - 08/24/2014

General Motors Company

Addition to N012237-New Project July 11 - June 2012 Under Goal 1 of Thrust Area 4: Clean Sheet Electrical Architectures for BEV/HEVs in the "Continuation of the "GM/University of Michigan Collaborative Research Laboratory in Engine Systems Research" (GM/UM ESR CRL)-Papalambros (K. Ahn VRI)

PANOS Y PAPANAMBROS (ME GM)

\$136,034 07/01/2011 - 06/30/2012

Continuing Project Under Goal 1 of Thrust Area 4: Waste Heat Recovery Systems for Hybrid Propulsion Systems in the "Continuation of the GM/University of Michigan Collaborative Research Laboratory in Engine Systems Research" GM/UM ESR CRL-N012427 and N012433-Papalambros-Dongsuk Kum

PANOS Y PAPANAMBROS (ME GM)

\$112,902 06/01/2011 - 05/31/2012

General Motors Foundation

ISP Algorithm and Its Correlation to Actual Crash Injuries (w/OnStar)

STEWART C WANG (GSA - Administration (GSA/ADM))

\$500,000 11/01/2010 - 04/30/2012

Georgia State University

2011 IIPF -- Georgia State University (Andrew Young School of Policy Studies)

JOEL B SLEMROD (ROSS SCH Ofc Tax Policy Rsrch)

\$10,000 04/08/2011 - 12/31/2011

GlaxoSmithKline (GSK)

2010.123: A Double-Blind, Randomized, Placebo-Controlled, Phase I/II Study Evaluating The Safety, Immunogenicity And Clinical Activity Of Neoadjuvant Treatment With WT1-A10 + AS15 Antigen-Specific Cancer Immunotherapeutic In Combination With Standard Therapy In Patients With WT1-Positive Stage II Or III Breast Cancer

ANNE F SCHOTT (Int Med-Hematology/Oncology)

\$262,776 07/20/2011 - 07/15/2013

UMCC 2010.041 - A double-blind, randomized, placebo-controlled Phase III study to assess the efficacy of recMAGE-A3 + AS15 Antigen-Specific Cancer Immunotherapeutic as adjuvant therapy in patients with resectable MAGE-A3+ Non-Small Cell Lung Cancer

RISHINDRA M REDDY (Thoracic Surgery Section)

\$4,576 03/24/2010 - 08/05/2016

Global Probiotics Council

Host responses to mucus layer colonization by commensal microbiota species

ERIC CHARLES MARTENS (Microbiology and Immunology)

\$50,000 07/01/2011 - 06/30/2012

Gore, W. L., & Associates, Inc.

The GORE? VIATORR? TIPS Endoprosthesis versus Large-Volume Paracentesis for the Treatment of Ascites in Patients with Portal Hypertension (Early TIPS for Ascites Study)

PAULA M NOVELLI (Department of Radiology)

with PRATIMA SHARMA

\$61,418 06/29/2011 - 04/30/2013

Gruenthal GmbH

Effects of Intravenous Administered Novel Compounds in Monkeys

MEI-CHUAN KO (Pharmacology Department)

\$24,000 06/27/2011 - 06/26/2012

Harvard University

Harlem Children's Zone Interview Project

ROBIN TEPPER JACOB (Education and Well Being)

\$721,967 07/01/2011 - 06/30/2013

Health and Human Services, Department of-Agency for Health Care Research and Quality

Trial of the CarePartner Program for Improving the Quality of Transition Support

JOHN D PIETTE (Int Med-General Medicine)

with BRENT C WILLIAMS
CAROLINE S BLAUM
CHRISTOPHER S KIM
EVE ASKANAS KERR
STEVEN J BERNSTEIN

\$1,185,796 09/01/2011 - 06/30/2014

Health and Human Services, Department of-Centers for Disease Control and Prevention

TIME: Technology for Immunization Message Enhancement (continuation supplement)

KEVIN JOHN DOMBKOWSKI (Pediatrics-Ambulatory Care Pgm)

\$55,000 09/01/2010 - 08/31/2011

University of Michigan Education and Research Center

STUART ARTHUR BATTERMAN (Environmental Health Sciences)

with W MONROE KEYSERLING

\$617,945 07/01/2011 - 06/30/2013

Core_plus_Option_A_B_Proposal for Influenza Vaccine Effectiveness Research

ARNOLD S MONTO (Epidemiology Department)

with R ALEXANDER BLACKWOOD
SUZANNE E OHMIT

\$5,424,998 07/01/2011 - 06/30/2016

A Randomized Study of Exclusion Criteria in a University Population

ALLISON ELIZABETH AIELLO (Epidemiology Department)

ARNOLD S MONTO (Epidemiology Department)

with ERIK MCCULLOUGH VOLZ
ERIN MARCELLA REES CLAYTON
SUZANNE E OHMIT

\$1,999,963 09/01/2011 - 08/31/2013

IPA National Center for Health Statistics

JAMES M LEPKOWSKI (SRC-Survey Methodology Prog)

\$190,404 09/01/2011 - 08/30/2013

Health and Human Services, Department of-Health Resources and Services Administration

Education of Leaders for Translation of Evidence to Improve Quality Care

RICHARD W REDMAN (SON-Grants)

with KAREN HARLOW-ROSENTRUB

\$1,092,107 07/01/2011 - 06/30/2014

Strengthen Care to Underserved Populations (UM-FISCUP) via Enhancement of Advanced Nursing Education and Practice

CONSTANCE J CREECH (Flint Nursing)

with DIANE L TOWERS

HIBA BAHAELELINE WEHBE-ALAMAH

MARGARET M ANDREWS

MARILYN RUTH MCFARLAND

MARILYN S FILTER

\$700,773 07/01/2011 - 06/30/2014

Advanced Nurse Education Traineeship 2011-2012

CONSTANCE J CREECH (Flint Nursing)

\$32,014 07/01/2011 - 06/30/2012

2011 Nurse Anesthetist Traineeship

LYNN L LEBECK (Flint Dept Pub Hlth & Hlth Sci)

\$21,046 07/01/2000 - 06/30/2012

Advanced Education Nursing Traineeship (AENT) Program

RICHARD W REDMAN (SON-Grants)

\$70,403 07/01/2011 - 06/30/2012

University of Michigan Flint Initiatives for Nursing Diversity

LINDA D'APPOLONIA KNECHT (Flint Nursing)

with MARGARET M ANDREWS

\$1,195,405 07/01/2011 - 06/30/2014

Collaborative Office Rounds

BARBARA TRUE FELT (Center for Human Growth & Dev)

with BETSY LOZOFF

\$75,000 07/01/2011 - 06/30/2016

Health and Human Services, Department of-National Institutes of Health

Understanding Variation in Radioactive Iodine Use in Treatment of Thyroid Cancer

MEGAN HAYMART (Metabolism, Endo & Diabetes)

\$855,344 07/15/2011 - 06/30/2016

Training Program in Bioinformatics

BRIAN D ATHEY (CCMB-Initiatives)

with JULIA NOELLE EUSSEN

MARGIT BURMEISTER

TIFFANY L PORTIES

\$883,760 07/01/2011 - 06/30/2016

Systems and Integrative Biology Training Grant

JOHN ANDREW WILLIAMS (Molec & Integrative Physiology)

\$1,814,424 07/01/2011 - 06/30/2016

Tailored Medication Adherence Program for Adolescent Liver Transplant Recipients

EMILY MACDONALD FREDERICKS (Child Behavioral Health)

\$440,542 09/01/2011 - 08/31/2015

Synapse Maturation by Activity-Dependent Ectodomain Shedding of SIRP

HISASHI UMEMORI (Molecular & Behav Neurosc Inst)

\$419,300 08/01/2011 - 07/31/2013

Virtual High Throughput Screening Of Mechanism-Based Inhibitors For Cytochrome P450 2E1

HAOMING ZHANG (Pharmacology Department)

\$155,500 07/01/2011 - 06/30/2013

CDX2 Tumor Suppressor Pathway Defects in Colon Cancer

ERIC R FEARON (Int Med-Molecular Med&Genetics)

with DAVID O FERGUSON

KATHLEEN R CHO

YING FENG

YUAN ZHU

\$1,356,250 09/01/2011 - 07/31/2016

Cancer Stem Cell Niche in Brain Tumors

XING FAN (Neurosurgery)

\$1,580,379 09/01/2011 - 06/30/2016

Two-Phase Cancer Studies of Gene-Environment Interaction

BHRAMAR MUKHERJEE (Biostatistics Department)

with SEBASTIAN K ZOELLNER

\$150,062 07/01/2011 - 06/30/2013

Leptin receptor modulation of the gut-microbiota interaction

MARTIN MYERS (Int Med-Gastroenterology)

\$58,682 07/01/2011 - 06/30/2012

Role of Gata3 in pylorus development

DEBORAH L GUMUCIO (Cell and Developmental Biology)

\$94,566 06/03/2011 - 06/02/2014

University of Michigan Surgical Oncology Research Training Program

ALFRED E CHANG (GSA - Surgical Oncology (SON))

\$1,255,598 07/08/2011 - 06/30/2016

Oral Health in Breast Cancer Survivors on Aromatase Inhibitors

LINDA SUSAN TAICHMAN (DENT Periodontics and Oral Med)

\$619,465 08/01/2011 - 07/31/2016

Alternative Vacuolar Targeting Mechanisms in Yeast

DANIEL J KLIONSKY (Life Sciences Institute-Admin)

\$2,745,440 08/01/2011 - 05/31/2015

Neurocognitive Risk For Alcoholism Into Adulthood

MARY MARGARET HEITZEG (Psych Substance Abuse)
ROBERT A ZUCKER (Psych Substance Abuse)

with JENNIE MARIE JESTER
JENNIFER M GLASS
JON K ZUBIETA
LEON I PUTTLER
ROBERT C WELSH
SCOTT J PELTIER
YUH-PEY ANNE BUU

\$3,375,284 09/01/2011 - 07/31/2016

Post-translational regulation of MLL in leukemogenesis

JAY L HESS (Pathology Department)

\$200,761 07/15/2011 - 06/30/2013

C-H Bond Functionalization in Organic Synthesis

MELANIE S SANFORD (LSA Chemistry)

\$1,097,012 08/01/2011 - 07/31/2015

A Clinical Trial for the Surgical Treatment of Elderly Distal Radius Fractures

KEVIN CHI CHUNG (Plastic Surgery Section)

with HYUNGJIN MYRA KIM

\$4,620,957 08/15/2011 - 07/31/2016

New Therapeutic Targets in AML

JAY L HESS (Pathology Department)

\$1,805,433 08/15/2011 - 07/31/2016

Enhancing Informal Caregiving to Support Diabetes Self-Management

JAMES E AIKENS (Family Medicine)

JOHN D PIETTE (Family Medicine)

with ANANDA SEN
LEE ALBERT GREEN

\$2,493,696 08/05/2011 - 04/30/2016

Training peers to deliver ongoing self-management support in church-based settings

TRICIA S TANG (Med Ed/Ofc of Ed Resources&Res)

with KENNETH RESNICOW
MARTHA M FUNNELL
MARY ELLEN MICHELE HEISLER

\$466,500 08/01/2011 - 07/31/2013

Memory T Cells in the Tumor Microenvironment

WEIPING ZOU (Surgery Department)

with ILONA E KRYCZEK
TRACY XIAO CUI

\$2,045,402 07/01/2011 - 04/30/2016

Mechanisms underlying the generation of oncogenic chromosomal translocations

JOANN SEKIGUCHI (Int Med-Molecular Med&Genetics)

\$129,175 08/01/2011 - 07/31/2015

Preproinsulin Translocation and Processing at the ER Membrane: a link to Diabetes (R01 Resub)

MING LIU (Metabolism, Endo & Diabetes)

with LEENA HAATAJA

\$1,360,625 08/01/2011 - 04/30/2016

Pediatric Heart Network Regents of the University of Michigan

CAREN S GOLDBERG (Pediatrics-Cardiology)

RICHARD G OHYE (Pediatrics-Cardiology)

with JAMES G GURNEY

JOHN R CHARPIE

MARK WILLIAM RUSSELL

\$2,250,219 09/01/2011 - 06/30/2016

A multi-scale model to predict outcomes of immunomodulation and drug therapy during tuberculosis

DENISE E KIRSCHNER (Microbiology and Immunology)

JENNIFER J LINDERMAN (Microbiology and Immunology)

\$2,230,406 07/10/2011 - 04/30/2015

Quality of Life for SCI Clinical Trials: Development of the SCI-QOL

DAVID TULSKY (Physical Medicine & Rehab Dept)

with ANNA L KRATZ

CLAIRE Z KALPAKJIAN

DENISE G TATE

\$536,614 07/01/2011 - 06/30/2012

Injection Practices and HIV Risk Behavior among Transgendered Persons in Puerto Rico

MARK B PADILLA (Hlth Behavior & Hlth Ed Dept)

\$452,982 07/15/2011 - 06/30/2013

The Mucolipin TRP Ion Channels

HAOXING XU (LSA Molec./Cell./Develop. Bio)

\$50,000 01/01/2011 - 12/31/2015

"Deliberative Engagement of Communities in Decisions about Research Spending (DECIDERS)

SUSAN D GOOLD (Int Med-General Medicine)

with HYUNGJIN MYRA KIM

KATHRYN LOUISE MOSELEY

LAWRENCE C AN

\$2,874,451 09/01/2011 - 08/31/2016

University of Michigan Core Clinical Center for the BMT Research Network

JAMES L FERRARA (Pediatrics-Hematology/Oncology)

with JOHN E LEVINE

SHIN MINEISHI

\$958,660 08/08/2011 - 06/30/2017

Real time visualization of obesity-induced inflammation in adipose tissue

CAREY NIEN-KAI LUMENG (Pediatrics-Pulmonary Medicine)

\$427,625 07/12/2011 - 06/30/2013

Cathepsin K Radioligands for In Vivo Imaging

MICHAEL R KILBOURN (Department of Radiology)

with KENNETH MICHAEL KOZLOFF

\$384,863 07/15/2011 - 07/14/2013

Diet and pathophysiology of heart failure with preserved ejection fraction

ALAN B WEDER (Int Med-Cardiology)

\$794,764 08/01/2011 - 06/30/2016

Mesenchymal stromal cell matricellular protein expression and bronchopulmonary dysplasia

MARC B HERSHENSON (Pediatrics-Pulmonary Medicine)

\$712,814 08/12/2011 - 06/30/2016

Essential functions of PITX2 in cornea, iris, and iridocorneal angle development

PHILIP J GAGE (Ophthalmology & Visual Science)

\$1,943,750 09/01/2011 - 08/31/2016

Radiolabeled MAO-B Substrates for Imaging

MICHAEL R KILBOURN (Department of Radiology)

with KIRK A FREY

\$427,625 08/01/2011 - 07/31/2013

Development of a Knock-in Mouse Model for Spinocerebellar Ataxia Type 3

HENRY L PAULSON (Neurology Department)

with VIKRAM SHAKKOTTAI

\$155,500 08/01/2011 - 07/31/2013

The Role of Hox Genes in the Integration of the Musculoskeletal System in Development and Wound Repair

DENEEN MARIE WELLIK (Int Med-Molecular Med&Genetics)

with KENNETH MICHAEL KOZLOFF

\$1,749,375 08/01/2011 - 05/31/2016

Health, Wealth, and Wellbeing over the Life Course and Across Generations

VICKI A FREEDMAN (SRC-Psid)

with CHARLES C BROWN

FRANK P STAFFORD

JAMES S HOUSE

KATHERINE A MCGONAGLE

MICK P COUPER

NORBERT SCHWARZ

ROBERT F SCHOENI

\$8,533,198 09/01/2011 - 08/31/2016

Family Dynamics, Fertility, and Investments in Children Across Generations

NARAYAN SASTRY (SRC-Psid)

with KATHERINE A MCGONAGLE

ROBERT F SCHOENI

VICKI A FREEDMAN

\$3,161,971 08/18/2011 - 05/31/2016

Cellular Mechanisms in Animal Models of Depression

JOHN R TRAYNOR (Pharmacology Department)

\$385,545 07/01/2011 - 06/30/2012

HUNTING for myocardial infarction genes by combined genome and exome sequencing

CRISTEN J WILLER (Int Med-Cardiology)

with GONCALO ABECASIS

JUN LI

MICHAEL LEE BOEHNKE

\$3,705,578 08/18/2011 - 06/30/2016

The mechanism of blood brain barrier impairment in cerebral cavernous malformation 3

ANUSKA A ZOCHOWSKA (Pathology Department)

with RICHARD F KEEP
SVETLANA STAMATOVIC

\$427,625 08/15/2011 - 07/31/2013

Gene Therapy for Reconstructing Periodontal Tissues

WILLIAM V GIANNOBILE (DENT Periodontics and Oral Med)

with QIMING JIN
SCOTT J HOLLISTER

\$1,521,480 08/01/2011 - 07/31/2015

Advanced Glycation End Products Effects on Bone Biomechanics

MICHAEL D MORRIS (LSA Chemistry)

with AYYALUSAMY RAMAMOORTHY
DAVID H KOHN

\$2,572,380 08/18/2011 - 07/31/2016

New Cyclization Methods and Multicomponent Couplings

JOHN MONTGOMERY (LSA Chemistry)

\$1,185,607 08/02/2011 - 07/31/2015

Unraveling folding and mechanism of a small model ribozyme

NILS G WALTER (LSA Chemistry)

\$1,347,054 09/01/2011 - 06/30/2015

Muller glia and retina regeneration

DANIEL J GOLDMAN (Molecular & Behav Neurosc Inst)

\$1,166,250 08/01/2011 - 07/31/2014

Comparing Measures of Survey Data Quality

JAMES ROBERT WAGNER (SRC-Survey Methodology Prog)

with MICHAEL R ELLIOTT

\$155,500 08/16/2011 - 07/31/2013

Longitudinal Studies of Autism Spectrum Disorders: 2 to 23

CATHERINE LORD (UM Autism & Comm Disorders Ctr)

\$517,216 07/27/2011 - 05/31/2013

Mesenchymal Cell Fate Determination by Extracellular Matrix Stiffness

JEFFREY C HOROWITZ (Int Med-Pulm./Critical Care)

with THOMAS HAROLD SISSON

\$1,970,817 08/01/2011 - 06/30/2016

Neurological Emergencies Treatment Trials Network: Clinical Coordinating Center

WILLIAM G BARSAN (Emergency Medicine Admin)

with ANGELA FREYMUTH CAVENEY
DAVID TULSKY
LEWIS B MORGENSTERN
NOELLE E CARLOZZI
PHILLIP ALTON SCOTT
ROBERT SILBERGLEIT
WILLIAM J MEURER

\$10,977,678 09/01/2011 - 08/31/2016

Biological significance of Mallory-Denk bodies in mouse and human liver

BISHR OMARY (Molec & Integrative Physiology)

\$146,070 08/01/2011 - 07/31/2014

MicroRNA-21 in Renal Aging

MARKUS BITZER (Int Med-Nephrology)

\$155,500 08/01/2011 - 07/31/2013

Prognosis and End-of-Life Decision Making in Intracerebral Hemorrhage

DARIN ZAHURANEC (Neurology Department)

\$795,780 09/01/2011 - 08/31/2016

Signaling and microRNA function in neurons

DAVID L TURNER (Molecular & Behav Neurosc Inst)

with ANNE B VOJTEK

FAN MENG

\$427,625 08/01/2011 - 07/31/2013

Catalysis by Prostaglandin Endoperoxide H Synthases

WILLIAM L SMITH (Biological Chemistry Dept)

with DAVID ARONOFF

\$1,952,227 09/01/2011 - 05/31/2015

A Spatial Agent-Based Model of Walking Behavior in Cities

ANA V DIEZ ROUX (Epidemiology Department)

with DAN BROWN

RICK L RIOLO

YONG YANG

\$427,625 08/18/2011 - 07/31/2013

PTD-Mediated Protein or Drug Delivery for Cancer Therapy

VICTOR CHI-MIN YANG (PHARMACY Pharmaceutical Sci)

\$1,304,159 05/01/2011 - 04/30/2016

Chemoenzymatic studies of aminoglycoside-resistance enzymes towards new drugs

SYLVIE GARNEAU-TSODIKOVA (Life Sciences Institute-Admin)

with OLEG V TSODIKOV

TAPAN BISWAS

\$1,779,436 08/01/2011 - 07/31/2015

A Novel Immune Stimulatory Ligand in Autoimmunity-Associated Angiogenesis

JOSEPH HOLOSHITZ (Int Med-Rheumatology)

with ALISA E KOCH

\$1,749,375 08/18/2011 - 06/30/2016

Functional Characterization of Thrombospondin-2 in Bone Extracellular Matrix

ANDREA ALFORD (Orthopaedic Surgery)

\$580,166 08/18/2011 - 08/17/2016

Docosahexaenoic Acid (DHA) and Neonatal Neuroprotection.

JOHN D E BARKS (Pediatrics-Neonatal/Perinatal)

with FAYE S SILVERSTEIN

ZORA DJURIC

\$425,293 08/01/2011 - 04/30/2013

Exploring the Feasibility of Approximate Sequential Pattern Discovery in Massive Time-Series Datasets to Predict Adverse Critical Care Outcomes

ZEEZHAN HASSAN SYED (COE EECS - CSE - AI)

\$330,629 08/15/2011 - 07/31/2013

First Symposium on Head and Neck Cancer Stem Cells

JACQUES EDUARDO NOR (DENTCariology, Restor Sci & Endo)

\$20,000 09/01/2011 - 08/31/2012

Nitroalkene-Mediated Vascular Protection and Ischemic Stroke

YUQING CHEN (Int Med-Cardiology)

with KEJIE YIN

\$1,360,624 08/15/2011 - 07/31/2015

Variation in the ability of drug cues to reinstate drug seeking

TERRY E ROBINSON (LSA Psychology)

\$64,416 09/01/2011 - 08/31/2013

Cellular stress response to the oxidizing effects of bleach

URSULA H JAKOB (LSA Molec./Cell./Develop. Bio)

\$99,724 09/01/2011 - 08/31/2013

Whole Genome and Exome Sequencing for Bipolar Disorder

MICHAEL LEE BOEHNKE (Biostatistics Department)

with GONCALO ABECASIS

HUDA AKIL

JUN LI

LAURA JEAN SCOTT

MARGIT BURMEISTER

MELVIN G MCINNIS

SEBASTIAN K ZOELLNER

STANLEY J WATSON JR

\$1,843,345 08/30/2011 - 06/30/2014

Notch Regulation of Gastric Antral Stem Cells

LINDA C SAMUELSON (Molec & Integrative Physiology)

\$152,766 07/01/2011 - 06/30/2014

Thyroid hormone-dependent DNA methylation in the developing brain

ROBERT J DENVER (LSA Molec./Cell./Develop. Bio)

\$63,285 07/01/2011 - 06/30/2013

23rd Annual Conference of the International Society for Environmental Epidemiology

MARIE SYLVIA O'NEILL (Environmental Health Sciences)

\$10,000 07/01/2011 - 06/30/2012

More Complete Assessment of DNA Variation in Age-Related Macular Degeneration

GONCALO ABECASIS (Biostatistics Department)

with HYUN MIN KANG

JOHN R HECKENLIVELY

\$4,777,176 09/01/2011 - 08/31/2015

Recruitment of BST-2/tetherin to HIV-1 assembly sites

AKIRA ONO (Microbiology and Immunology)

with SARAH VEATCH

\$416,034 07/01/2011 - 06/30/2013

Electrical Neuroimaging of Brain Processes during Human Gait

DANIEL P FERRIS (School of Kinesiology)

with WILLIAM J GEHRING

\$1,313,866 09/01/2011 - 08/31/2015

HIV Risk Dynamics, Genetic Patterns, and Control - Supplement

JAMES S KOOPMAN (Epidemiology Department)

\$354,925 07/01/2011 - 06/30/2012

Ecologic Stressors, PTSD, and Drug Use in Detroit - Supplement

ALLISON ELIZABETH AIELLO (Epidemiology Department)

\$155,474 09/01/2011 - 08/31/2012

Developmental Mechanisms of Leptin Resistance

MARTIN MYERS (Metabolism, Endo & Diabetes)

\$84,945 06/01/2011 - 03/31/2013

Aging, Calorie Restriction and Insulin Signaling

GREGORY DEAN CARTEE (School of Kinesiology)

\$69,402 09/01/2011 - 06/30/2012

International Cancer Epidemiology and Prevention Training (GSS 2011)

SOFIA D MERAJVER (UM Center for Global Health)

\$25,000 06/01/2011 - 06/30/2012

Enzymology of Posttranslational Modifications- Elia Wright Diversity Supplement

CAROL A FIERKE (LSA Chemistry)

\$130,409 04/01/2011 - 03/31/2014

Behavior on Surveys and in the Economy: HRS and Beyond - Admin. Supplement-Project 4

ROBERT J WILLIS (SRC-Hrs)

with MATTHEW D SHAPIRO

\$149,105 08/01/2011 - 03/31/2015

U-Turn of the Hepatitis Delta Virus Ribozyme R01 GM062357-Diversity Supplement Extension

NILS G WALTER (LSA Chemistry)

\$28,794 07/01/2011 - 06/30/2012

SWOG Biorepository Move

LAURENCE H BAKER (Int Med-Hem/Oncology and SWOG)

\$665,444 08/29/2011 - 12/31/2015

Gene Therapy and the Brain: Neuroimmune Interactions

PEDRO LOWENSTEIN (Neurosurgery)

with MARIA CASTRO

\$169,859 07/01/2011 - 01/31/2012

Hearing Preservation for Noise or Cochlear Implantation: Mechanisms & Treatments

RICHARD A ALTSCHULER (Kresge Hearing Research Inst)

\$112,437 08/01/2011 - 07/31/2013

HANDLS Sample Design and Selection 2011 - 2012

JAMES M LEPKOWSKI (SRC-Survey Methodology Prog)

\$9,986 08/01/2011 - 07/31/2012

SPIROMICS - Bronchoscopy and Immunophenotyping Core

FERNANDO JOSE MARTINEZ (Int Med-Pulm./Critical Care)

with ANTHONY J COUREY
CHRISTINE M FREEMAN
JEFFREY L CURTIS

\$1,188,346 09/01/2011 - 12/31/2015

Health and Human Services, Department of-National Institutes of Health-Subcontracts

Air Pollution Inflammation and Preterm Birth Grant Supplement

MARIE SYLVIA O'NEILL (Environmental Health Sciences)

\$104,000 06/01/2011 - 05/31/2013

Hemophilia Foundation of Michigan

2011-2012 Maternal and Child Health Bureau (MCHB) Grant Contract

STEVEN W PIPE (Pediatrics-Hematology/Oncology)

\$23,000 06/01/2011 - 05/31/2012

Hewlett-Packard Company

Flexible Resource Management in Highly Available Virtual Data Centers

KANG GEUN SHIN (COE EECS - CSE - SSRL)

\$60,000 08/01/2011 - 07/31/2012

Honda R & D Americas, Inc.

Sustainable Worldwide Transportation

MICHAEL SIVAK (UMTRI-Human Factors)

\$60,000 07/07/2011 - 07/06/2012

Hyundai Motor Company and Kia Motors Corporation

Research Experience Program for Hyundai-Kia Motors: High-Efficiency Cooling System

DOHOY JUNG (Dbn Coll of Eng-Mechanical Eng)

\$42,783 09/01/2011 - 08/31/2012

Training Service Agreement

PAUL A GREEN (UMTRI-Driver Interface)

\$57,000 07/18/2011 - 04/30/2012

Research Experience Program for Hyundai-Kia Motors: The Effect of Fuel on Deposit, Soot and Fuel Dilution in the Gasoline Direct Injection Engine

DOHOY JUNG (Dbn Coll of Eng-Mechanical Eng)

\$38,945 08/01/2011 - 07/31/2012

ImmuneWorks

A Phase One, Open Label, Multi-Dose Study to Evaluate the Safety, Tolerability, and Biologic Effects of Three Doses of IW001 in Patients with Idiopathic Pulmonary Fibrosis (IPF)

KEVIN R FLAHERTY (Int Med-Pulm./Critical Care)

\$62,271 06/27/2011 - 06/27/2012

Innovega Inc

Fabrication of wire-grid polarizer on gas permeable polymer film

L JAY GUO (COE EECS - ECE - SSEL)

\$65,000 07/01/2011 - 03/31/2012

Institute of International Education

Research and Action: New Mobility Solutions in Beijing and Detroit

PETER FRANK SWEATMAN (UMTRI - SMART Program)

\$250,000 06/15/2011 - 12/31/2013

Institute of Museum and Library Services

Peony Garden Capacity Building: public access to authoritative information

ROBERT E GRESE (Botanical Gardens & Arboretum)

with CARMEN LESKOVIANSKY

CATRIONA MARY MORTELL-WINDECKER

DAVID C MICHENER

\$79,658 08/01/2011 - 07/31/2012

Supplement: Engaging Communities to Foster Internships for Preservation and Digital Curation

ELIZABETH YAKEL (School of Information)

\$125,000 09/01/2008 - 08/31/2012

INSYS Therapeutics, Inc

Effects of Nebulized IL13-PE in Monkey

CORY M HOGABOAM (Pathology Department)

\$6,500 07/01/2011 - 10/30/2011

Intelligent Automation, Inc.

Cognitive Ultra-low Power Sensor System (CUPSS)

DENNIS MICHAEL SYLVESTER (COE EECS - ECE - SSEL)

\$24,000 08/25/2011 - 04/27/2012

Interior, Department of the

Exploring changes in energy transfer within Great Lakes food webs: implications for fish production

JAMES STEPHEN DIANA (Sch of Nat Resources & Environ)

\$76,198 08/08/2011 - 12/13/2013

International Truck and Engine Corporation (NAVISTAR)

Ride and Handling Benchmark Measurements

DAVID JAMES LEBLANC (UMTRI-Engineering Systems)

\$10,134 07/01/2011 - 10/01/2011

Ivoclar Vivadent

Clinical Evaluation of Glass Ceramic Material for Chair-side CAD/CAM Crowns

DENNIS J FASBINDER (DENTCariology,Restor Sci &Endo)

\$39,130 08/15/2010 - 08/14/2014

Jet Propulsion Laboratory*PATH/GeoSTAR Risk Mitigation Correlator Development*

CHRISTOPHER S RUF (Space Physics Research Lab)

\$1,750,000 06/28/2011 - 03/31/2014

Intra-Channel Discharge Coupling Induced Plasma Oscillations and Electron Transport in Nested-Channel Hall Thrusters

ALEC D GALLIMORE (Aerospace Engineering)

\$70,000 06/13/2011 - 03/25/2012

HCl, HF and H2O+ in comets : probing solar nebula and coma chemistry

MICHAEL R COMBI (Space Physics Research Lab)

\$7,460 07/27/2011 - 12/31/2013

Johns Hopkins University*MUST Trial amendment Year 8*

SUSAN G ELNER (Ophthalmology & Visual Science)

\$58,946 05/01/2011 - 12/31/2011

Johnson & Johnson Pharmaceutical Research & Development L.L.C. (J&JPRD)*Rheumatoid Arthritis Mechanisms*

DAVID A FOX (Int Med-Rheumatology)

with SEAN CELESTER FRIDAY

\$211,945 08/02/2011 - 08/01/2013

Johnson, Robert Wood, Foundation*Family Collective Efficacy: An Underdeveloped Mechanism to Minimize Adolescent Risk Behaviors*

TSUI-SUI ANNIE KAO (SON-Grants)

with CAROLYN M SAMPSELLE

\$350,000 09/01/2011 - 08/31/2014

Robert Wood Johnson Health and Society Scholars

ANA V DIEZ ROUX (Epidemiology Department)

with CARLOS F MENDES DE LEON

JAMES S HOUSE

JEFFREY D MORENOFF

MARK L WILSON

TRIVELLORE E RAGHUNATHAN

\$1,216,127 09/01/2011 - 08/31/2013

Justice, Department of*National Archive of Criminal Justice Data*

TIMOTHY S BYNUM (ICPSR-Archival Development)

\$1,335,078 10/01/2011 - 09/30/2012

Juvenile Diabetes Research Foundation International (JDRF)*JDRF Center for Mechanisms and Intervention of Diabetic Retinopathy*

THOMAS GARDNER (Ophthalmology & Visual Science)

with CHENG-MAO LIN

DAVID ANTONETTI

STEVEN ABCOUWER

\$1,666,761 05/01/2011 - 04/30/2012

JV Biolabs

Proposal to evaluate eight compounds for activity against-EGF-stimulated epidermal hyperplasia.: Organ culture studies

NARASIMHARAO V BHAGAVATHULA (Pathology Department)

\$76,560 08/05/2010 - 12/31/2011

PROPOSAL FOR SCREENING 256 MEDICIS COMPOUNDS FOR ANTI-AGING ACTIVITY

NARASIMHARAO V BHAGAVATHULA (Pathology Department)

with MICHAEL K DAME

\$176,709 03/01/2011 - 02/28/2012

Kellogg, W. K., Foundation

Building A Better Michigan

TAMAR R CHARNEY (Michigan Radio)

\$50,000 06/15/2011 - 08/31/2011

Kentucky Educational Television

University of Michigan GED Connection Summary

JEROME JOHNSTON (RCGD-Rsrch Cntr for Grp Dyn)

\$1,500 05/20/2011 - 06/30/2011

Kinectrics Inc.

RECHARGE MICH ION BEAM LAB 2011

GARY S WAS (Nuclear Eng & Radiological Sci)

with ZHIJIE JIAO

\$8,000 02/01/2011 - 07/31/2011

Korea Institute of Machinery and Materials

Artificial Basilar Membrane for ZnO Nanowire-Based Cochlear Prosthesis: Phase II

KARL GROSH (Mechanical Engineering)

\$60,273 03/01/2011 - 02/29/2012

Kresge Foundation

Consequences of Exposure to Air Toxics Risk on the School-Aged Population: State and National Policy Development

PAUL MOHAI (Sch of Nat Resources & Environ)

with BYOUNG-SUK KWEON

\$865,000 07/01/2011 - 06/30/2014

Great Lakes Adaptation Assessment for Cities (GLAAC)

DONALD SCAVIA (Graham Environ. Sustain. Inst.)

\$600,000 07/01/2011 - 06/30/2014

Kwame Nkrumah University of Science and Technology (KNUST)

Ghana Emergency Medicine Collaborative Training Program

REBECCA CUNNINGHAM (Emergency Medicine UM Adult)

with N CARY ENGLEBERG

PATRICK MICHAEL CARTER

RICHARD W REDMAN

TERRY KOWALENKO

TIMOTHY R B JOHNSON

WILLIAM G BARSAN

\$130,794 11/30/2010 - 08/31/2011

Leukemia and Lymphoma Society

Targeting MLL1 activity for new leukemia therapy

SHAOMENG WANG (Int Med-Hematology/Oncology)

with YALI DOU

\$600,000 10/01/2011 - 09/30/2014

Towards therapeutic application of menin-MLL inhibitors for MLL leukemias

JOLANTA E GREMBECKA (Pathology Department)

with JAY L HESS

\$600,000 10/01/2011 - 09/30/2014

Development of new anti-leukemia drugs targeting the menin-MLL interaction.

JOLANTA E GREMBECKA (Pathology Department)

\$37,541 08/01/2011 - 11/30/2011

Loeb, Frederick and Stella, Charitable Trust

Christopher Paul Curtis Writing Adventure Loeb Trust

ROSE A CASEMENT (Flint Education)

\$5,000 09/01/2011 - 01/31/2012

Los Alamos National Security, LLC

Cell-Centered Hydrodynamics Simulation Methods

PHILIP L ROE (Aerospace Engineering)

\$100,000 06/07/2011 - 05/02/2012

MACTEC

Atmospheric Dry Deposition Monitoring

DONALD R ZAK (Sch of Nat Resources & Environ)

\$4,005 08/01/2011 - 07/31/2012

Magee Womens Research Institute

Microbicide Safety and Acceptability in Young Men

JOSE ARTURO BAUERMEISTER (Hlth Behavior & Hlth Ed Dept)

\$2,757 06/01/2011 - 08/31/2011

Massachusetts General Hospital

Clinical Trial of Ceftriaxone in ALS

KIRSTEN L GRUIS (Neurology Department)

\$237,516 03/01/2011 - 06/30/2011

McKing Consulting Corporation

Center for Public Health and Community Genomics

TOBY CITRIN (Health Management and Policy)

\$197,458 09/30/2010 - 09/29/2011

MedArray, Inc.

Long-Term Extracorporeal Blood Oxygenating Device

KEITH E COOK (GSA - Acute Care Surgery (ACS))

with ROBERT HAWES BARTLETT

\$482,297 08/04/2011 - 07/31/2014

Michelin Americas Research and Development Corporation

Sustainable Worldwide Transportation

MICHAEL SIVAK (UMTRI-Human Factors)

\$30,000 07/15/2011 - 07/14/2012

Michigan Humanities Council

ECO Girls

TIYA A MILES (LSA CAAS)

\$7,674 05/15/2011 - 05/31/2012

Great Michigan Read 2011-12

STEPHEN SCHRAM (Michigan Productions)

\$10,157 08/01/2011 - 09/01/2011

Michigan Parkinson Foundation

A Critical Comparison of Unilateral and Bilateral Deep Brain Stimulation to Alleviate Symptoms of Parkinson's Disease

PARAG G PATIL (Neurosurgery)

\$20,000 07/01/2011 - 06/30/2012

Michigan, State of, Education, Department of

Special Education Teachers of Algebra 2: Supplement 2 for Math Coordinators

ROGER F VERHEY (Dbn CASL-Math & Statistics)

\$13,320 05/06/2011 - 09/30/2011

Michigan, State of, State Police, Department of

2010 Michigan Traffic Crash Facts--In-Depth Investigation of Increase in Michigan Fatalities in 2010

CHARLES P COMPTON (UMTRI-Data Center)

\$9,793 07/15/2011 - 09/30/2011

Michigan Technological University

Impacts of Interacting Elevated Atmospheric CO2 and O3 on the Structure and Functioning of a Northern Forest Ecosystem: Operating and Decommissioning the Aspen FACE Project

DONALD R ZAK (Sch of Nat Resources & Environ)

\$352,826 04/01/2008 - 03/31/2012

MicroVention Terumo

Clinical Research Coordinator Support

ADITYA S PANDEY (Neurosurgery)

\$25,000 08/01/2011 - 06/30/2012

Midwest Eye Banks and Transplantation Center

MEBTC Student Stipend Award-Bajenova

MARK W JOHNSON (Ophthalmology & Visual Science)

\$2,500 07/01/2011 - 06/30/2012

Characterization of crystallin proteins expression in human retina: effect of diabetes

PATRICE ELIE FORT (Ophthalmology & Visual Science)

\$15,000 07/01/2011 - 06/30/2012

Millennium Pharmaceuticals, Inc.

2009.001 An Open-Label, Dose Escalation, Phase 1 Study of MLN4924, a Novel Inhibitor of Nedd8-Activating Enzyme, in Adult Patients with Acute Myelogenous Leukemia, High-Grade Myelodysplastic Syndrome, and Acute Lymphoblastic Leukemia

HARRY P ERBA (CTO-Phase 1)

\$41,040 07/15/2010 - 07/14/2012

Moore, Gordon and Betty, Foundation

Explaining Protected Areas (PA) Outcomes in the Andes-Amazon Region

ARUN AGRAWAL (Sch of Nat Resources & Environ)

with DAN BROWN

LAUREN MICHELLE PERSHA

\$399,663 07/27/2011 - 12/31/2012

MPI Research

Histological Services for MPI Research Inc.

RICHARD A ALTSCHULER (Kresge Hearing Research Inst)

\$611,630 09/30/2009 - 02/01/2012

Muscular Dystrophy Association, Inc.

182nd ENMC Workshop on RYR1-Related Myopathies

JAMES DOWLING (Pediatrics-Neurology)

\$6,500 04/01/2011 - 09/15/2011

NanoBio Corporation

Testing UTI vaccine antigens using the murine model of ascending UTI

HARRY L T MOBLEY (Microbiology and Immunology)

with CHRISTOPHER J ALTERI

\$50,245 04/01/2011 - 03/31/2012

National Academy of Sciences

Explaining Geographic Variation in Health Care Spending and Health Care Quality Outcomes and Associated Methodological Challenges

EDWARD COLBURN NORTON (Health Management and Policy)

\$10,000 06/27/2011 - 03/01/2012

National Action Council for Minorities in Engineering, Inc.

Recruitment of Sloan Fellowship Program

BRADFORD G ORR (LSA Physics)

\$8,000 08/24/2011 - 08/24/2015

National Aeronautics and Space Administration

The brines of the Phoenix landing site, the potential for life to adapt to them, and the implications for life elsewhere

NILTON O RENNO (Atm, Oceanic & Space Sci.)

with BRUCE P BLOCK

\$1,054,636 05/25/2011 - 05/24/2015

Mass Evolution of Hot Jupiters

FRED C ADAMS (LSA Physics)

\$67,300 06/24/2011 - 06/23/2012

Missing Hot Baryons Around Galaxies

JOEL N BREGMAN (LSA Astronomy)

\$379,742 06/01/2011 - 05/31/2014

Theory Confronts Observations: Protoplanetary Disk Evolution and Gap Formation by Planets

LEE WILLIAM HARTMANN (LSA Astronomy)

\$290,978 06/22/2011 - 06/21/2014

Determining Water Production Rates with SOHO/SWAN Observations of Cometary Hydrogen

MICHAEL R COMBI (Space Physics Research Lab)

\$315,000 08/01/2011 - 07/31/2014

Seed Particle Populations in the Solar Corona

LENNARD A FISK (Atm, Oceanic & Space Sci.)

with GEORGE GLOECKLER

\$413,118 08/05/2011 - 08/04/2015

*"Improving Topside Ionosphere and Plasmasphere Density Models:
A Model and Observational Approach - Y2"*

MARK MOLDWIN (Atm, Oceanic & Space Sci.)

with JULIE ANN FELDT

\$30,000 09/01/2010 - 08/31/2012

Using the Global Precipitation Measurement Microwave Imager as a Transfer Standard for the GPM Constellation of Satellites, Y2

CHRISTOPHER S RUF (Atm, Oceanic & Space Sci.)

with RACHAEL ANN KROODSMA

\$30,000 09/01/2011 - 08/31/2012

Modeling, Characterization, and Experimental Validation of Composite Adhesive Joints

ANTHONY M WAAS (Aerospace Engineering)

\$30,000 07/06/2011 - 07/05/2012

Analysis of Pick-Up Ion Loss at Mars - Year 2

MICHAEL WARREN LIEMOHN (Atm, Oceanic & Space Sci.)

with SHANNON CURRY

\$30,000 09/01/2011 - 08/31/2012

Ions from Mercury: Magnetosphere, Sputtering and Transport

THOMAS H ZURBUCHEN (Atm, Oceanic & Space Sci.)

with JIM RAINES

\$30,000 07/01/2011 - 06/30/2012

New Operating Mode for a Quadrupole Mass Spectrometer

THOMAS H ZURBUCHEN (Atm, Oceanic & Space Sci.)

with DANIEL GERSHMAN

\$30,000 07/01/2011 - 06/30/2012

Suprathermal Particles Near the Sun

SUSAN THERESE LEPRI (Atm, Oceanic & Space Sci.)

with JACOB R GRUESBECK

\$30,000 07/01/2010 - 06/30/2012

Integrated Vehicle Health Management through Data-Based Model Updating and Input Reconstruction

DENNIS S BERNSTEIN (Aerospace Engineering)

\$30,000 07/01/2011 - 06/30/2012

Model Comparisons of the Inner Magnetosphere During Geomagnetic Storms of the IMAGE Mission

MICHAEL WARREN LIEMOHN (Atm, Oceanic & Space Sci.)

with ROXANNE M KATUS

\$30,000 09/01/2011 - 08/31/2012

Non-intrusive Measurement of Electric Field in Pulsed Nanosecond Discharge for Plasma-aided Combustion

JOHN EDISON FOSTER (Nuclear Eng & Radiological Sci)

\$30,000 05/20/2009 - 06/19/2012

Structure and Dynamics of the 60 - 120 km Region on Mars

STEPHEN W BOUGHER (Atm, Oceanic & Space Sci.)

\$30,000 09/01/2011 - 08/31/2012

Computational Modeling of Hall Thruster Erosion

IAIN D BOYD (Aerospace Engineering)

\$66,000 09/01/2011 - 08/31/2012

Investigation of Transient Plasma Processes of Field-Reverse Configuration Thrusters

ALEC D GALLIMORE (Aerospace Engineering)

\$66,000 09/01/2011 - 08/31/2012

Modeling Failure of K-Cor Sandwich Structures with Defects Using a Multi-scale Finite Element Method

ANTHONY M WAAS (Aerospace Engineering)

\$66,000 09/01/2011 - 08/31/2012

Simultaneous X-ray and Radio Observations of AGN

JON MATTHEW MILLER (LSA Astronomy)

\$30,000 09/01/2011 - 08/31/2012

Differential InSAR Over Vegetative Terrain for the Detection and Prediction of Earthquakes

KAMAL SARABANDI (COE EECS - ECE - Rad)

\$30,000 09/01/2011 - 08/31/2012

Development of an Integrated Radar-Radiometer Estimation Algorithm for Retrieval of Soil Moisture from SMAP

MAHTA MOGHADDAM (COE EECS - ECE - Rad)

\$30,000 09/01/2011 - 08/31/2012

PECASE Extension to:

Mapping Global CO₂: Development and Application of Geostatistical Algorithms for Gap Filling and Uncertainty Assessment for the Orbiting Carbon Observatory

NANCY G LOVE (Civil & Environmental Engr)

\$198,613 04/01/2011 - 03/31/2013

Investigating Processes of Atmospheric Loss at Venus and Mars - Supplemental

MICHAEL WARREN LIEMOHN (Atm, Oceanic & Space Sci.)

\$15,572 02/01/2011 - 01/31/2014

*Support for the Hurricane Imaging Radiometer (HIRAD)
during GRIP and HS3*

CHRISTOPHER S RUF (Space Physics Research Lab)

\$312,000 06/15/2011 - 06/14/2014

Probing Gamma-Ray-Flaring AGN Jets with Radio Band Linear Polarization

MARGO F ALLER (LSA Astronomy)

with PHILIP A HUGHES

\$199,252 07/28/2011 - 07/27/2013

Blackout Mitigation Via Cathode Spot Ejection of Ceramic Quenchant Particulate

JOHN EDISON FOSTER (Nuclear Eng & Radiological Sci)

with ERIC DAVID GILLMAN

\$30,000 08/01/2011 - 07/31/2012

Modeling of a Magnetoplasmadynamic Thruster using a Magnetic Nozzle

IAIN D BOYD (Aerospace Engineering)

\$66,000 08/01/2011 - 07/31/2012

Sensor-Only System Identification for Structural Health Monitoring of Advanced Aircraft

DENNIS S BERNSTEIN (Aerospace Engineering)

\$75,000 07/13/2011 - 07/12/2012

National Alliance for Research on Schizophrenia and Depression

The Roles of Infant Sleep, Stress, and Inflammation in Predicting Pre-School Depression

MARIA MUZIK (Psychiatry-ASAP)

\$60,000 07/15/2011 - 07/14/2013

National Archives and Records Administration

Evaluating the Silence: Providing Access to the Collections Related to Underrepresented Groups in the William L. Clements Library

BARBARA DEWOLFE (Clements Library)

with CHENEY JOSHUA SCHOPIERAY
CLAYTON LEWIS

\$111,350 10/01/2011 - 09/30/2013

National Bureau of Economic Research

Expanding the National Health Accounts

TRIVELLORE E RAGHUNATHAN (Biostatistics Department)

\$185,382 05/01/2011 - 01/31/2012

National Center for Healthcare Leadership (NCHL)

Project Support for the National Center for Healthcare Leadership

CHRISTY HARRIS LEMAK (Health Management and Policy)

\$44,296 07/01/2011 - 06/30/2012

National Childhood Cancer Foundation

Children's Oncology Group Chair's Grant 021093

GREGORY A YANIK (Pediatrics-Hematology/Oncology)

\$15,000 03/01/2011 - 02/29/2012

Amendment #3: Clinical Study Funding Rider

MEGAN S LIM (Pathology Department)

\$10,937 03/01/2011 - 02/29/2012

National Fish and Wildlife Foundation

Eastern Massasauga Habitat Restoration, Conservation and Education

ROBERT E GRESE (Botanical Gardens & Arboretum)

with JEFFREY J PLAKKE

\$74,213 02/14/2010 - 06/12/2012

National Marrow Donor Program (NMDP)

Proteome of Chronic Graft versus Host Disease

SOPHIE PACZESNY (Pediatrics-Hematology/Oncology)

with THOMAS M BRAUN

\$240,000 07/01/2011 - 06/30/2014

National Opinion Research Center

Exploring New Methods for Protecting and Distributing Confidential Research Data

BRYAN A BEECHER (ICPSR-Archival Development)

with KATHERINE A MCGONAGLE

MARGARET C LEVENSTEIN

\$433,115 09/04/2010 - 08/31/2012

National Science Foundation

EMSW21-RTG: Training the Research Workforce in Geometry, Topology and Dynamics

RALF J SPATZIER (LSA Mathematics)

\$2,500,000 08/15/2011 - 07/31/2016

DNA Mismatch repair in Bacillus subtilis

LYLE A SIMMONS (LSA Molec./Cell./Develop. Bio)

\$965,772 08/01/2011 - 07/31/2015

SHB: Medium: Collaborative Research: Novel Computational Techniques for Cardiovascular Risk Stratification

ZEESHAN HASSAN SYED (COE EECS - CSE - AI)

\$562,415 09/01/2011 - 08/31/2015

III: Medium: Collaborative Research: Database-as-a-Service for Long Tail Science

MICHAEL JOHN CAFARELLA (COE EECS - CSE - SSRL)

\$231,977 08/01/2011 - 07/31/2014

CIF:Small: A new coding paradigm for communication over broadcast channels using nested linear codes: A duality of structure and randomness

SANDEEP P SADANANDARAO (COE EECS - ECE - Cspl)

\$329,727 09/01/2011 - 08/31/2014

GOALI/COLLABORATIVE RESEARCH: MODULE-CENTRIC APPROACH TO INTEGRATED ADAPTATION OF ASSEMBLY PRODUCTS AND SUPPLY CHAINS

JACK HU (Mechanical Engineering)

\$177,304 08/01/2011 - 07/31/2014

Multi-axis Parallel-Kinematic Motion Systems with a Large Dynamic Range

SHORYA AWTAR (Mechanical Engineering)

\$330,694 09/01/2011 - 08/31/2014

Collaborative Research: Very-Near-Ground Wireless Channel Modeling: Theory and Practice

KAMAL SARABANDI (COE EECS - ECE - Rad)

\$210,000 09/01/2011 - 08/31/2014

Organometallic Chemistry of High Oxidation State Palladium

MELANIE S SANFORD (LSA Chemistry)

\$354,000 08/15/2011 - 07/31/2014

Collaborative Research: Western Equatorial Pacific rainfall during the Holocene - New interannual records from high resolution Borneo stalagmites

DAVID CHARLES LUND (LSA Geological Sciences)

\$188,621 09/01/2011 - 08/31/2013

CIF: Large: Collaborative Research: CONTROLLED SENSING, DISTRIBUTED SIGNAL PROCESSING, AND DECISIONMAKING IN NETWORKED SYSTEMS

DEMOSTHENIS TENEKETZIS (COE EECS - ECE - Cspl)

with ACHILLEAS ANASTASOPOULOS

MAHTA MOGHADDAM

SANDEEP P SADANANDARAO

\$1,430,710 09/01/2011 - 08/31/2016

CIF: Small: The informational limit of eigen-analysis based dimensionality reduction, learning and classification

RAJESH RAO NADAKUDITI (COE EECS - ECE - Cspl)

\$278,353 08/01/2011 - 07/31/2014

Molecular Level Studies on Phthalates at Interfaces Using Nonlinear Optical Spectroscopic Techniques

ZHAN CHEN (LSA Chemistry)

\$420,000 07/15/2011 - 06/30/2013

Large-scale structure in complex networks

MARK E NEWMAN (LSA Physics)

\$320,000 08/15/2011 - 07/31/2014

Mathematical Questions in Gravitation, Black Holes, Cosmology, and Rotating Stars

JOEL A SMOLLER (LSA Mathematics)

\$251,999 08/01/2011 - 07/31/2014

The Interplay Between Massive Black Holes and their Hosts during Galaxy Mergers

MARTA VOLONTERI (LSA Astronomy)

\$330,737 09/01/2011 - 08/31/2014

Collaborative Research: Ice core studies reconstructing Greenland climate during the Eemian and beyond

SARAH M ACIEGO (LSA Geological Sciences)

\$306,812 01/01/2012 - 12/31/2014

Tracing and Linking Contextual and Psychological Factors to STEM Career Choice

JACQUELYNNE S ECCLES (RCGD-Achievement Research)

with BARBARA SCHNEIDER

MING-TE WANG

\$1,749,436 08/01/2011 - 07/31/2014

Collaborative Research on Carbon, Water, and Energy Balance of the Arctic Landscape at Flagship Observatories in Alaska and Siberia

GEORGE W KLING (LSA Ecology & Evolutionary Bio)

\$303,340 09/01/2011 - 08/31/2014

Imaging Starspot on Active Stars Using the Upgraded MIRC6 Combiner on the CHARA Interferometer

JOHN D MONNIER (LSA Astronomy)

\$370,741 08/01/2011 - 07/31/2014

Collaborative Research: Direct Reconstruction Methods for Optical Tomography and Related Inverse Problems

JOHN CARL SCHOTLAND (LSA Mathematics)

\$200,000 08/15/2011 - 07/31/2014

Doctoral Dissertation Research: Economies of representation: Mining and communication in Guatemala

STUART KIRSCH (LSA Anthropology)

\$14,140 07/15/2011 - 06/30/2012

CAREER: Creation of a Predictive and Dynamic Life Cycle Assessment Tool

SHELIE MILLER (Sch of Nat Resources & Environ)

\$247,609 11/15/2010 - 09/30/2014

Molecular theory and simulation of vibrational and electronic relaxation in liquid solution and its spectroscopic signature

EITAN GEVA (LSA Chemistry)

\$440,000 07/15/2011 - 06/30/2014

HCC: Large: Collaborative Research: Human-Robot Dialog for Collaborative Navigation Tasks

BENJAMIN KUIPERS (COE EECS - CSE - AI)

\$693,265 08/15/2011 - 07/31/2013

Digitization TCN: Collaborative Research: Plants, Herbivores, and Parasitoids: A Model System for the study of Tri-Trophic Associations

RICHARD K RABELER (LSA Herbarium)

\$192,878 07/01/2011 - 06/30/2015

Digitization TCN: Collaborative Research: North American Lichens and Bryophytes: Sensitive Indicators of Environmental Quality and Change

TIMOTHY Y JAMES (LSA Herbarium)

\$213,241 07/01/2011 - 06/30/2015

NeTS: Large: Collaborative Research: Measuring and Modeling the Dynamics of IPv4 Address Exhaustion

MICHAEL DONALD BAILEY (COE EECS - CSE - SSRL)

with MANISH KARIR
ZHUOQING MAO

\$1,199,901 08/01/2011 - 07/31/2015

Multi-Instrument Observation of Dynamics of the Ionospheric Trough During Substorms

SHASHA ZOU (Atm, Oceanic & Space Sci.)

with MARK MOLDWIN

\$312,899 08/15/2011 - 07/31/2014

Integrating Circuits, Sensing, and Software to Realize the Cubic-mm Computing Class

DAVID D WENTZLOFF (COE EECS - ECE - SSEL)

with DAVID BLAAUW
DENNIS MICHAEL SYLVESTER
PRABAL DUTTA

\$2,533,000 08/15/2011 - 07/31/2016

TC:Small: Location-Privacy Protection for Mobile Handset Users

KANG GEUN SHIN (COE EECS - CSE - SSRL)

\$499,800 09/01/2011 - 08/31/2014

Computation of the Semi-Classical Limit of Schroedinger's Equation, Anisotropic Grain Growth, and Epitaxial Growth using Kinetic Monte Carlo

PETER S SMEREKA (LSA Mathematics)

\$149,999 07/15/2011 - 06/30/2014

Collaborative Research: Inversion of the Broken-Ray Radon Transform and Applications

JOHN CARL SCHOTLAND (LSA Mathematics)

\$212,108 07/01/2011 - 06/30/2014

CIF: Collaborative Research: Small: Distributed Detection Algorithms and Stochastic Modeling for Large Monitoring Sensor Networks

LONG NGUYEN (LSA Statistics)

\$263,483 08/01/2011 - 07/31/2014

AF: Small: Collaborative Research: High-Performance Hybrid Micromagnetic-Electromagnetic Simulators

ERIC MICHIELSEN (COE EECS - ECE - Rad)

\$249,302 08/01/2011 - 07/31/2014

AF: Small: Tera Hertz (THz) Plasmonic Technologies for the Beyond Moore's Laws Era

PINAKI MAZUMDER (COE EECS - CSE - SSRL)

with JACK R EAST

\$400,412 09/01/2011 - 08/31/2014

SNM: Continuous and large scale nanomanufacturing of graphene and carbon nanotube materials

L JAY GUO (COE EECS - ECE - SSEL)

with ANASTASIOS JOHN HART

STEVEN M YALISOVE

ZHAOHUI ZHONG

\$1,299,999 09/01/2011 - 08/31/2015

Multi-scale studies of pH-mediated viral capsid dynamics and mechanics

CHARLES L BROOKS III (LSA Chemistry)

\$677,164 08/01/2011 - 07/31/2014

Developing and Testing a Model to Support Student Understanding of the Sub-Microscopic Interactions that Govern Biological and Chemical Processes

JOSEPH S KRAJCIK (SOE-Educational Studies)

with LEEANN MARIE SUTHERLAND

SHAWN YVETTE STEVENS

\$2,631,203 09/01/2011 - 08/31/2016

African American Racial Identity and Coping with Racial Stressors

ROBERT M SELLERS (LSA Psychology)

with ETHAN F KROSS

\$449,163 08/15/2011 - 07/31/2014

ATD: Collaborative Research: Mathematical Challenges in Distributed Quickest Detection

ERHAN BAYRAKTAR (LSA Mathematics)

\$304,385 08/15/2011 - 07/31/2014

Discovering patterns in the natural world through student inquiry in ecology and biodiversity

PHILIP MYERS (LSA Zoology Museum)

\$577,538 08/01/2011 - 07/31/2013

Molecular Basis of Positional Signaling in Arabidopsis Root Epidermal Development

JOHN SCHIEFELBEIN (LSA Molec./Cell./Develop. Bio)

\$540,000 09/01/2011 - 08/31/2014

Doctoral Dissertation Research: Constructing Online Counterpublic Spheres, Legality and Citizenship in China

GRETA R KRIPPNER (LSA Sociology)

\$15,000 07/01/2011 - 06/30/2012

Doctoral Dissertation Research: Law and the Production of Sexual Identity: Processing Male Rape in the Legal Field

ELIZABETH ANN ARMSTRONG (LSA Sociology)

\$15,000 08/01/2011 - 07/31/2012

Collaborative Research: Non-Standard Asymptotic Theory for Semiparametric Estimators

MATIAS DAMIAN CATTANEO (LSA Economics)

\$283,922 08/15/2011 - 07/31/2014

Cross-level feedback between individual absence behavior and absence culture in the construction industry

SANGHYUN LEE (Civil & Environmental Engr)

with ROBERT P STEEL

\$320,000 09/01/2011 - 08/31/2014

Mesenchymal Stem Cells and the Synthetic Microenvironment: An Integrated Approach

JIANPING FU (Mechanical Engineering)

\$375,000 08/01/2011 - 07/31/2014

Stress corrosion micro-cracking or static fatigue: the principal cause of rate effects and `aging? in sand

RADOSLAW L MICHALOWSKI (Civil & Environmental Engr)

\$354,072 09/01/2011 - 08/31/2014

Tunable Micro-Optofluidic Ring Resonator Arrays as Micro Gas Chromatograph Detectors

EDWARD T ZELLERS (Environmental Health Sciences)

with XUDONG FAN

\$360,000 09/01/2011 - 08/31/2014

Doctoral Dissertation Research: Constructing Political Actorhood: The Emergence and Transformation of the AIDS Movement in China, 1989-2009

ELIZABETH ANN ARMSTRONG (LSA Sociology)

\$9,650 08/01/2011 - 07/31/2012

Doctoral Dissertation Research: Untangling the Knotted Roots of Trust: A Comparison of U.S. and Venezuelan Investors in the Stanford Financial Fraud

GEORGE P STEINMETZ (LSA Sociology)

\$10,000 08/15/2011 - 07/31/2012

Collaborative GOALI: Cost-Effective Energy Efficiency Management of Sustainable Manufacturing Systems"

XIULI CHAO (Industrial Operations)

\$212,000 09/01/2011 - 08/31/2014

Collaborative Research: Stable isotope tracers of the subsurface biosphere and its geochemical effects in oceanic ridge flank basement

JEFFREY C ALT (LSA Geological Sciences)

\$211,999 09/01/2011 - 08/31/2014

Reference and Extended Command Governors for Constrained Control: Theory and Applications

ILYA VLADIMIR KOLMANOVSKY (Aerospace Engineering)

\$339,037 09/01/2011 - 08/31/2014

New Approaches for the Design of Integrated Phased Arrays

AMIR MORTAZAWI (COE EECS - ECE - Rad)

\$360,000 09/01/2011 - 08/31/2014

REU Supplement: Assessing information credibility without authoritative sources

QIAOZHU MEI (School of Information)

with DRAGOMIR RADKOV RADEV

PAUL J RESNICK

RAHUL SAMI

\$16,000 07/21/2011 - 06/30/2013

Liquid Biofuels from Wet Algae Paste via Novel Two-Step Processes

PHILLIP E SAVAGE (Chemical Engineering Dept)

\$300,000 09/01/2011 - 08/31/2014

Planning Grant: I/IUCRC for the Center for Macromolecular Topology (CMT)

RONALD G LARSON (Chemical Engineering Dept)

\$11,499 07/15/2011 - 06/30/2012

A Scalable Cavity Architecture for Quantum Optoelectronics in the Strong-Coupling Regime

HUI DENG (LSA Physics)

\$56,984 08/01/2011 - 07/31/2012

Low-temperature Anaerobic Membrane Bioreactors for Sustainable Domestic Wastewater Treatment

LUTGARDE M RASKIN (Civil & Environmental Engr)

with NANCY G LOVE

STEVEN J SKERLOS

\$348,338 09/01/2011 - 08/31/2014

Developing a Spatially-Explicit Agent-Based Life Cycle Analysis Framework for Improving the Environmental Sustainability of Bioenergy Systems

MING XU (Sch of Nat Resources & Environ)

with SHELIE MILLER

\$309,097 09/01/2011 - 08/31/2014

Designing Efficient Platinum-Free Electrocatalysts for Oxygen Reduction Reaction

SULJO LINIC (Chemical Engineering Dept)

\$285,000 09/01/2011 - 08/31/2014

Research Initiation Grant: Developing strategies to improve women's active participation in engineering student group project teams

LORELLE ANNISE MEADOWS (CoE Undergraduate Education)

with DENISE J SEKAQUAPTEWA

\$148,174 09/01/2011 - 08/31/2013

REU Supplement: Wave Approach in Vibration Analysis and Control of Complex Built-up Distributed Structures

CHUNHUI MEI (Dbn Coll of Eng-Mechanical Eng)

\$6,000 07/01/2011 - 06/30/2012

An investigation of plasma formation in electromechanically driven free bubbles at resonance in water with applications for the treatment of contaminated water

JOHN EDISON FOSTER (Nuclear Eng & Radiological Sci)

\$6,810 08/02/2011 - 08/31/2013

Gordon Research Conference on Supramolecular Chemistry

NICHOLAS KOTOV (Chemical Engineering Dept)

\$16,665 07/15/2011 - 06/30/2012

EAGER: GreenSC: Characterizing and modeling energy use in social computing

THOMAS A FINHOLT (School of Information)

\$299,982 09/01/2011 - 08/31/2013

NSF Postdoctoral Fellowship - Karola Meszaros

SERGEY FOMIN (LSA Mathematics)

\$1,667 09/01/2011 - 08/31/2012

REU Supplement: All Inorganic Plasmon-enhanced Photovoltaics with Eutectic Composition

AKRAM BOUKAI (Materials Science & Engin.)

\$12,500 08/10/2011 - 08/31/2014

IPA Assignment for Ben van der Pluijm - Year 1

BEN VAN DER PLUIJM (LSA Geological Sciences)

\$195,040 08/01/2011 - 07/31/2012

Intergovernmental Personnel Act (IPA)-Third Year

ARVIND ATREYA (Mechanical Engineering)

\$235,393 09/08/2011 - 09/07/2012

EAGER: On the Optimal Rewards Problem

SATINDER SINGH BAVEJA (COE EECS - CSE - AI)

with RICHARD L LEWIS

\$200,000 08/01/2011 - 07/31/2013

EAGER: Cyberinfrastructure for manufacturing systems: Needs and Opportunities

DAWN M TILBURY (Mechanical Engineering)

\$100,000 09/01/2011 - 08/31/2012

Graduate Research Fellowship

JANET A WEISS (Grad Schl-Fellowship Prgm)

\$1,183,250 02/01/2007 - 01/31/2012

NSF IPA for Myron Gutmann Yr 3-4

MYRON P GUTMANN (ICPSR-Archival Development)

\$1 11/02/2011 - 11/01/2013

National Writing Project

Oakland Michigan Writing Project

LAURA JANE ROOP (School of Education)

\$35,000 07/01/2011 - 06/30/2012

Nevada System of Higher Education

A multi-spectral approach to evaluating the response of deep organized convection to aerosols

DEREK J POSSELT (Atm, Oceanic & Space Sci.)

\$100,403 03/23/2011 - 03/22/2014

New York University

Encyclopedia of C. Elegans 3'UTRS and their Regulatory Elements

JOHN KIM (Life Sciences Institute-Admin)

\$253,472 04/01/2011 - 03/31/2012

Ratte-Vani-NYU-2009 (CONTINUATION)

CHRISTOPHER JOHN RATTE (LSA Classical Studies)

\$19,808 04/01/2010 - 08/31/2011

Nissan Technical Center, North America

Automotive Analysis Affiliate Program

BRUCE M BELZOWSKI (UMTRI-Automotive Analysis Div.)

\$7,500 08/01/2011 - 07/31/2012

North American Science Associates (NAMSA)

Histological Services for North American Science Associates

RICHARD A ALTSCHULER (Kresge Hearing Research Inst)

\$1,820 08/01/2011 - 12/31/2011

North Carolina, State of, Community College System

Project IDEAL State Membership North Carolina Yr. 10

JEROME JOHNSTON (RCGD-Communication/Education)

\$23,022 07/27/2011 - 05/30/2012

Northeast Michigan Community Service Agency, Inc (NEMCSA)

NEMI Children's Health Project

LAURA LEIN (School of Social Work)

\$165,000 04/01/2011 - 03/31/2014

Novartis

A randomized, double-blind, placebo controlled, multicenter study of subcutaneous secukinumab to demonstrate efficacy after twelve weeks of treatment, and to assess the safety, tolerability and long-term efficacy up to one year in subjects with moderate to severe chronic plaque-type psoriasis

YOLANDA ROSI HELFRICH (Dermatology Department)

\$128,050 06/30/2011 - 09/30/2013

Proteomic Biomarker Study in Human Serum

KENT J JOHNSON (Pathology Department)

with ROSCOE L WARNER

\$72,000 07/15/2010 - 02/28/2013

Oakland, County of

Jobs for Michigan

GEORGE A FULTON (IRLEE)

\$27,500 08/01/2011 - 09/30/2011

Oak Ridge National Laboratory

Fatigue Testing and Analysis of Friction Stir Spot Welds of High-Strength Steels

JWO PAN (Mechanical Engineering)

\$24,999 01/11/2010 - 12/31/2011

Omeros Corporation

Quantitation of Intraepidermal Nerve Fiber (IENF)

EVA L FELDMAN (Neurology Department)

\$5,636 06/01/2011 - 08/31/2011

OncoMed Pharmaceuticals, Inc.

A Phase 1 Dose Escalation Study of OMP-18R5 in Subjects with Solid Tumors

DAVID C SMITH (CTO-Phase 1)

\$824,387 05/17/2011 - 06/30/2012

Onconova Therapeutics, Inc

2011.025: A Phase III, Multi-Center, Randomized, Controlled Study to Assess the Efficacy and Safety of ON 01910.Na Administered as a 72-Hour Continuous Intravenous Infusion Every Other Week in Myelodysplastic Syndrome Patients with Excess Blasts Relapsing After, or Refractory to, or Intolerant to Azacitidine or Decitabine

DALE LEE BIXBY (Int Med-Hematology/Oncology)

\$383,534 07/29/2011 - 07/31/2013

OnGreen

China Investment in US Clean Technology Innovation

THOMAS PEYTON LYON (Sch of Nat Resources & Environ)

\$20,000 03/01/2011 - 02/29/2012

Pediatric Endocrine Society (PES)

Stress and Obesity: The Role of Neuropeptide Y in Adipose Tissue Inflammation

DELIA M VAZQUEZ (Pediatrics-Endocrinology)

\$50,000 07/01/2011 - 06/30/2012

Pennsylvania, State of, Department of Education

Project IDEAL State Membership PA Yr.10

JEROME JOHNSTON (RCGD-Communication/Education)

\$1,800 07/01/2011 - 06/30/2012

Pennsylvania State University

Prevalence, Predictors, and Consequences of Alcohol Use from Childhood to Midlife

MEGAN E PATRICK (SRC-Studies of Youth)

with JOHN E SCHULENBERG

\$79,345 04/15/2011 - 03/31/2012

Peripheral Vascular Surgery Society

The Role of Podocytes in Contrast-Induced Nephropathy (CIN)

GUILLERMO ESCOBAR (Vascular Surgery Section)

\$14,500 07/01/2011 - 06/30/2012

Pew Charitable Trusts, The

Architectural Analysis of A GPCR-G Protein Complex

GEORGIOS SKINIOTIS (Life Sciences Institute-Admin)

\$240,000 07/01/2011 - 06/30/2016

Pfizer, Inc.

A Phase 3, Multicenter, Randomized, Double-Blind, Placebo-Controlled, Parallel-Group Efficacy and Safety Trial of Bapineuzumab (AAB-001, ELN115717) in Subjects with mild to moderate Alzheimer Disease who are Apolipoprotein E4 Non-Carriers.

NANCY R BARBAS (Neurology Department)

\$359,988 06/02/2011 - 05/31/2014

Phrixus Pharmaceuticals, Inc

Effects of P-188 respiratory function and diaphragm degeneration in the mdx mouse

JEAN ANN NEMZEK (Lab Animal Medicine Unit)

with JOHN ERBY WILKINSON

\$97,724 06/01/2011 - 09/30/2012

Plastic Surgery Educational Foundation

Therapeutic Prevention of Radiation Induced Non-Unions

STEVEN R BUCHMAN (Plastic Surgery Section)

\$10,000 07/01/2011 - 06/30/2012

Sense of Touch: An Artificial Feeling?

PAUL STEPHEN CEDERNA (Plastic Surgery Section)

\$50,000 07/01/2011 - 06/30/2012

Adipocyte Stem Cell Enhancement of Distraction in Radiated Jaws

STEVEN R BUCHMAN (Plastic Surgery Section)

\$10,000 07/01/2011 - 06/30/2012

'Endogenous Tissue Engineering' of Custom Mandible Free Flaps

STEVEN R BUCHMAN (Plastic Surgery Section)

\$9,696 07/01/2011 - 06/30/2012

Population Association of America

The Integrated Fertility Survey Series (IFSS): An Introductory Workshop

PAMELA J SMOCK (Pop Studies-Research)

\$5,000 07/01/2011 - 06/30/2012

Prevention Network

Prevention Network Community Matters: Evidence Based Strategies to Address Alcohol Issues

MARY JO DESPREZ (Health Service Education)

\$14,954 08/12/2011 - 06/30/2012

Quallion LLC

Synthesis of Nano-sized Lithium-containing Metal Oxides

RICHARD M LAINE (Materials Science & Engin.)

\$150,000 02/01/2009 - 06/20/2012

Quark Pharmaceuticals, Inc USA

Vestibular Hair Cell Regeneration with siRNA

YEHOASH RAPHAEL (Kresge Hearing Research Inst)

\$48,048 07/25/2011 - 09/24/2011

Radiological Society of North America

Comparative Effectiveness of MR Enterography, Enteric Ultrasound, and Ultrasound Elastography Imaging in the Evaluation of Pediatric Small Bowel Crohn Disease.

JONATHAN RUSSELL DILLMAN (Department of Radiology)

\$152,000 07/01/2011 - 06/30/2013

Resource Systems Group, Inc. (RSG)

Scan to Identify Scientific or Technological Advances Having Implications for State DOTs 30 to 50 Years in the Future

PETER FRANK SWEATMAN (UMTRI - SMART Program)

with SUSAN ZIELINSKI

\$6,354 07/15/2010 - 04/30/2011

Rhode Island College

Project IDEAL State Membership Rhode Island Yr.10

JEROME JOHNSTON (RCGD-Communication/Education)

\$12,000 07/01/2011 - 06/30/2012

Rolith, Inc

Fabrication of rolling mask on glass cylinder for Roller Lithography

L JAY GUO (COE EECS - ECE - SSEL)

\$17,606 07/01/2011 - 08/31/2011

Sage, Russell, Foundation

Recessionary shocks and their relationship to health: Evidence from the Michigan Recession and Recovery Study

SARAH ANDREA BURGARD (Pop Studies-Research)

\$72,583 07/01/2011 - 06/30/2013

Samsung Group

Development of a Background Suppression Scheme for 3D Image Sensors

EUISIK YOON (COE EECS - ECE - SSEL)

\$120,000 05/01/2011 - 04/30/2012

Sandia National Laboratories

2011 Excellence in Engineering Fellowship-Matthew Morabito

SULJO LINIC (Chemical Engineering Dept)

\$50,000 08/15/2011 - 08/14/2012

Sanofi-Aventis Pharmaceuticals

2011.040: A Phase 2 Randomized, Open-Label, Dose-Ranging Study of the Efficacy and Safety of Orally Administered SAR302503 in Patients with Intermediate-2 or High Risk Primary Myelofibrosis, Post-Polycythemia Vera Myelofibrosis, Post-Essential Thrombocythemia Myelofibrosis with Splenomegaly

MOSHE TALPAZ (Int Med-Hematology/Oncology)

\$838,150 08/08/2011 - 08/07/2013

Sanofi Pasteur

Estimation of the Incidence of Ventilator-Associated Pneumonia caused by Pseudomonas aeruginosa (VAP-Pa)

ROBERT C HYZY (Int Med-Pulm./Critical Care)

\$81,199 08/01/2011 - 07/31/2012

Science Applications International Corporation (SAIC)

BIQSFP - S0819 Supplement

LAURENCE H BAKER (Int Med-Hem/Oncology and SWOG)

\$197,000 10/01/2010 - 09/30/2014

Southwest Oncology Group Treatment Grant S1007 BIQSFP

LAURENCE H BAKER (Int Med-Hem/Oncology and SWOG)

\$500,000 10/01/2010 - 09/30/2015

Semiconductor Research Corporation

Silsequioxane thin films for low k applications

RICHARD M LAINE (Materials Science & Engin.)

\$110,000 07/01/2011 - 06/30/2012

Siemens PLM Software

Automotive Analysis Affiliate Program

BRUCE M BELZOWSKI (UMTRI-Automotive Analysis Div.)

\$7,500 08/01/2011 - 07/31/2012

Skillman Foundation

The America Reads Tutoring Corps (Skillman Foundation 2011-2012)

SIMONE HIMBEAULT TAYLOR (Community Service Learning)

\$55,000 07/01/2011 - 07/01/2012

Neighborhoods Working in Partnership: Building Capacity for Policy Change

CHERYL C COOMBE (Hlth Behavior & Hlth Ed Dept)

with AMY JO SCHULZ

BARBARA ANNE ISRAEL

MELISSA A VALERIO

MICHAEL SPENCER

RICHARD L LICHTENSTEIN

\$125,000 07/01/2011 - 07/01/2012

Sloan, Alfred P., Foundation

A Census-Enhanced Health and Retirement Study: A Proposal to Create and Analyze an HRS Dataset Enhanced with Characteristics of Employers

MARGARET C LEVENSTEIN (SRC-Hrs)

with CHARLES C BROWN

DAVID R WEIR

GWENITH GWYN FISHER

JACQUI SMITH

LAUREN HERSCH NICHOLAS

LINDSAY H RYAN

MATTHEW D SHAPIRO

MELVIN STEPHENS JR

PAMELA GIUSTINELLI

PHILIPPA J CLARKE

ROBERT STEVEN STAWSKI

TRIVELLORE E RAGHUNATHAN

\$4,398,616 07/01/2011 - 07/01/2016

The 2011 Risk Science Symposium: Risk, uncertainty and sustainable innovation: New perspectives on emerging challenges.

ANDREW DAVID MAYNARD (Environmental Health Sciences)

\$15,000 08/01/2011 - 11/01/2011

Alfred P. Sloan Foundation Fellowship - Elling

VOLKER WILHELM ELLING (LSA Mathematics)

\$50,000 09/15/2011 - 09/15/2013

Smith Richardson Foundation, Inc.

2011 IIPF -- Smith Richardson Foundation

JOEL B SLEMROD (ROSS SCH Ofc Tax Policy Rsrch)

\$25,000 07/15/2011 - 07/14/2012

Smithsonian Institution

The Nature and Evolution of Accretion Flows: Coronal Properties in X-ray Binaries and AGN

JON MATTHEW MILLER (LSA Astronomy)

\$120,155 09/01/2011 - 08/31/2013

Soar Technology, Inc.

Multi-Modal Interactions for Multi-RPA (Remotely Piloted Aircraft) Supervisory Council

ANOUCK RENEE GIRARD (Aerospace Engineering)

\$25,000 03/15/2011 - 12/07/2011

Society for Applied Microbiology (SFAM)

Developing/Emergent Technologies to Study Freshwater Biofilms

ALEXANDER RICKARD (Epidemiology Department)

\$3,646 06/01/2011 - 08/31/2011

Endangered culture collection

ALEXANDER RICKARD (Epidemiology Department)

\$4,097 07/01/2011 - 08/31/2011

Society of Family Planning

Expanding the Providers Share? Workshop Model: A Partnership with Planned Parenthood?s Consortium of Abortion Providers (CAPS)

LISA H HARRIS (Obstetrics and Gynecology Dept)

with JANE A HASSINGER

\$120,000 10/01/2011 - 09/30/2013

Southwest Oncology Group-Clinical Trials Initiative, L.L.C.

S0016, "A Phase III Trial of CHOP + Rituximab vs. CHOP + Iodine-131-Labeled Monoclonal Anti-B1 Antibody (Tositumomab) for Treatment of Newly Diagnosed Follicular Non-Hodgkin's Lymphomas."

ANNE F SCHOTT (Int Med-Hematology/Oncology)

\$5,000 06/01/2010 - 01/01/2015

NCIC CTG: MA.17R A Double Blind Randomization to Letrozole or Placebo for Women Previously Diagnosed with Primary Breast Cancer Completing Five Years of Adjuvant Aromatase Inhibitor Either as Initial Therapy or After Tamoxifen (Including Those in the MA.17 Study)

ANNE F SCHOTT (Int Med-Hematology/Oncology)

\$30,000 06/01/2010 - 01/01/2015

S0307, "Phase III Trial of Bisphosphonates as Adjuvant Therapy for Primary Breast Cancer."

ANNE F SCHOTT (Int Med-Hematology/Oncology)

\$43,152 06/01/2010 - 01/01/2015

S0354, "A Phase II Study of CNTO 328, A Monoclonal Antibody Against Interleukin-6 (IL-6), in Patients with Hormone Refractory Prostate Cancer."

ANNE F SCHOTT (Int Med-Hematology/Oncology)

\$1,700 06/01/2010 - 01/01/2015

S0106, "A Phase III Study of the Addition of Gemtuzumab Ozogamicin (Mylotarg?) During Induction Therapy Versus Standard Induction With Daunomycin and Cytosine Arabinoside Followed by Consolidation and Subsequent Randomization to Post-Consolidation Therapy With Gemtuzumab Ozogamicin (Mylotarg?) or No Additional Therapy for Patients Under Age 61 With Previously Untreated DeNovo Acute Myeloid Leukemia (AML)."

ANNE F SCHOTT (Int Med-Hematology/Oncology)

\$38,000 06/01/2010 - 01/01/2015

S0226-Phase III Randomized Trial of Anastrozole Versus Anastrozole and Fulvestrant as First Line Therapy for Post Menopausal Women With Metastatic Breast Cancer

ANNE F SCHOTT (Int Med-Hematology/Oncology)

\$2,000 06/01/2010 - 01/01/2015

S0500-A Randomized Phase III Trial to Test the Strategy of Changing Therapy Versus Maintaining Therapy for Metastatic Breast Cancer Patients who Have Elevated Circulating Tumor Cell Levels at First Follow-Up Assessment

ANNE F SCHOTT (Int Med-Hematology/Oncology)

\$4,500 06/01/2010 - 01/01/2015

S0421Phase III Study of Docetaxel and Atrasentan Versus Docetaxel and Placebo for Patients with Advanced Hormone Refractory Prostate Cancer

ANNE F SCHOTT (Int Med-Hematology/Oncology)

\$48,195 06/01/2010 - 01/01/2015

S0530, "A Phase II Trial of Cytarabine and Clofarabine in Patients With Relapsed or Refractory Acute Lymphoblastic Leukemia (ALL)."

ANNE F SCHOTT (Int Med-Hematology/Oncology)

\$500 06/01/2010 - 01/01/2015

S0433 "Phase II Study of Iodine-131-labeled Monoclonal Anti-B1 Antibody (I-131 Tositumomab) in Combination With Cyclophosphamide, Doxorubicin, Vincristine, Prednisone, and Rituximab Therapy for Patients With Advanced Stage Diffuse Large B-cell NHL".

ANNE F SCHOTT (Int Med-Hematology/Oncology)

\$12,000 06/01/2010 - 01/01/2015

S0622, "Phase II Studies of Two Different Schedules of Dasatinib (NSC-732517) in Bone-Metastasis Predominant Metastatic Breast Cancer".

ANNE F SCHOTT (Int Med-Hematology/Oncology)

\$7,300 06/01/2010 - 01/01/2015

S9916, "Docetaxel and Estramustine Versus Mitoxantrone and Prednisone for Advanced, Hormone Refractory Prostate Cancer, Phase III." Study Coordinator: Drs. D. Petrylak, J. Jones, M.H.A. Hussain, C. Moinpour and D. Berry.

ANNE F SCHOTT (Int Med-Hematology/Oncology)

\$352 06/01/2010 - 01/01/2015

S0702, "A Prospective Observational Multicenter Cohort Study to Assess the Incidence of Osteonecrosis of the Jaw (ONJ) in Cancer Patients with Bone Metastases Starting Zoledronic Acid Treatment."

ANNE F SCHOTT (Int Med-Hematology/Oncology)

\$7,625 06/01/2010 - 01/01/2015

S0722, "A Phase II Trial of MTOR Inhibitor, Everolimus (RAD001), in Malignant Pleural Mesothelioma (MPM)."

ANNE F SCHOTT (Int Med-Hematology/Oncology)

\$200 06/01/2010 - 01/01/2015

S0232, "Double-Blinded Placebo Controlled Phase III Trial Comparing Dexamethasone (DEX) to the Combination of DEX + CC-5013 in Patients with Previously Untreated Multiple Myeloma who are Not Immediately Undergoing Autologous Stem Cell Transplant."

ANNE F SCHOTT (Int Med-Hematology/Oncology)

\$2,700 06/01/2010 - 01/01/2015

Space Telescope Science Institute

The Stellar Halo Profiles of Massive Disk Galaxies

ERIC F BELL (LSA Astronomy)

\$64,348 10/01/2010 - 09/30/2013

Special Olympics, Inc.

Validating accelerometry and body composition measures in youth with and without Down syndrome

DALE A ULRICH (School of Kinesiology)

\$5,000 08/11/2011 - 08/10/2012

Spectral Sciences, Inc

Advanced Chemistry Modeling for Wake and Reentry Flows

IAIN D BOYD (Aerospace Engineering)

\$33,287 09/01/2011 - 01/31/2012

Stanley Medical Research Institute, The

Novel Therapeutics for toxoplasma infections

VERNON BRUCE CARRUTHERS (Microbiology and Immunology)

\$725,000 08/01/2011 - 07/31/2016

State Bar of Michigan

University of Michigan Law School Low Income Taxpayer Clinic Application with the State Bar of Michigan Taxation Section

BRIDGET M MCCORMACK (Law Clinical Activity)

with NICOLE APPLEBERRY

\$2,000 05/01/2011 - 04/30/2012

St. Jude Medical, Inc.

A Long-term Follow-up Study for the Evaluation of Patients who have a Deep Brain Stimulation System for the Adjunctive Treatment of Major Depressive Disorder

STEPHAN F TAYLOR (Psych Hospital & Community Svc)

with BRIAN JAMES MICKEY

DANIEL F MAIXNER

PARAG G PATIL

\$831,665 02/09/2011 - 01/10/2015

Sugar Law Center for Economic and Social Justice

Documenting Wage Theft Among Contingent Workers in Detroit

BRUCE A PIETRYKOWSKI (Dbn CASL-Social Sciences)

\$4,862 05/01/2011 - 01/31/2012

Susan Thompson Buffett Foundation

Fellowship in Family Planning

LISA H HARRIS (Obstetrics and Gynecology Dept)

with ANJEL M VAHRATIAN

VANESSA K DALTON

\$309,802 07/01/2011 - 06/30/2012

SynergEyes, Inc

Duette? Versus Biofinity? Toric: Visual Acuity and Vision-Related Quality of Life

MICHAEL J LIPSON (Ophthalmology & Visual Science)

\$36,175 05/31/2011 - 05/31/2012

TerraPower

Heavy Ion Irradiation of HT9

Phase 1: Correlation of Neutron and Heavy Ion Irradiation Behavior

GARY S WAS (Nuclear Eng & Radiological Sci)

with ZHIJIE JIAO

\$964,739 07/01/2011 - 05/31/2014

Teva Neuroscience

Neuroimmunology Lecture Series

BENJAMIN M SEGAL (Neurology Department)

\$52,040 08/25/2011 - 08/24/2012

The Bachman-Strauss Dystonia and Parkinson Foundation (BSDPF)

Identifying Predictors of Medication Responsiveness in Patients with Parkinson's Disease

RACHAEL D SEIDLER (School of Kinesiology)

\$50,000 08/01/2011 - 07/31/2012

The Fund for Cancer Research

PC100829 Mechanisms That Regulate Dormancy & Reactivation of Disseminated Tumor Cells

RUSSELL S TAICHMAN (DENT Periodontics and Oral Med)

\$75,000 06/01/2011 - 05/31/2012

The Sakai Foundation

UM Support to the Sakai Community - Extension to 6/30/12

SUSAN MARY HOLLAR (Library Pub Svcs - General)

\$152,871 07/01/2011 - 06/30/2012

Thoracic Surgery Foundation for Research and Education, The

Development of a Congenital Heart Assessment of Sensory and Motor Status (CHASMS) Instrument for Infants Following Cardiac Surgery: A Novel Outcomes Measure

JENNIFER C HIRSCH (Cardiac Surgery Section)

\$230,000 07/01/2010 - 06/30/2012

The Role of Dkk-3 and CTGF Overexpression in the Invasion and Metastasis of Esophageal Adenocarcinoma as Downstream Mediators of the TGF- β Pathway

JULES LIN (Thoracic Surgery Section)

\$40,000 02/01/2011 - 01/31/2012

Toyota Engineering & Manufacturing North America (TEMA)

Diesel Engine Air Path Modeling For Coordinated Control, Year 2

ILYA VLADIMIR KOLMANOVSKY (Aerospace Engineering)

\$130,370 07/01/2011 - 06/30/2012

Toyota Motor North America, Inc.

Modeling Thermal Properties of Carbon Nanotube Agglomerates in Water

ANGELA VIOLI (Mechanical Engineering)

\$38,716 02/01/2011 - 01/31/2012

Transportation, Department of-Federal Highway Administration

Safety Pilot Model Deployment

JAMES R SAYER (UMTRI-Human Factors)

with DAVID JAMES LEBLANC

JEROME P LYNCH

JOHN M SULLIVAN

JOHN WOODROOFFE

PETER FRANK SWEATMAN

RALPH L ROBINSON

\$14,931,323 08/18/2011 - 02/17/2014

Uberoi Foundation for Religious Studies

Sikhism and the Public Sphere

ARVIND-PAL SINGH MANDAIR (LSA Asian Languages & Cultures)

\$13,000 07/01/2011 - 01/31/2012

United States Council for Automotive Research

High-Voltage Lithium-ion Battery Models for Crashworthiness Analysis

JWO PAN (Mechanical Engineering)

\$100,000 06/28/2011 - 08/31/2012

United States Pharmacopeia

Identification of buffer systems that accurately simulate physiologically relevant bicarbonate buffer of the intestinal tract

GREGORY E AMIDON (PHARMACY Pharmaceutical Sci)

\$25,000 09/01/2011 - 08/31/2012

United Therapeutics Corporation

Digital Ischemic Lesions in Scleroderma Treated with Oral Treprostinil Diethanolamine (DISTOL-EXT)

ELENA SCHIOPU (Int Med-Rheumatology)

with KRISTINE PHILLIPS

\$62,625 11/01/2009 - 10/31/2014

University of Alabama at Birmingham (UAB)

2011.024 TBCRC 019 Trial: An Open Label, Randomized, Phase II Trial of Abraxane™ (Paclitaxel Albumin-Bound Particles for Injectable Suspension), with or without Tigatuzumab (a Humanized Monoclonal Antibody Targeting Death Receptor 5) (CS-1008) in Patients with Metastatic, Triple Negative (ER, PR, and HER-2 Negative) Breast Cancer

CATHERINE H VAN POZNAK (Int Med-Hematology/Oncology)

\$73,743 07/14/2011 - 04/20/2013

University of California - Berkeley

2011 IIPF -- University of California, Berkeley (Robert D. Burch Center for Tax Policy and Public Finance)

JOEL B SLEMROD (ROSS SCH Ofc Tax Policy Rsrch)

\$25,000 08/05/2011 - 12/31/2011

University of California - Davis

Factors Associated with Quality of Care Delivered to Children in US EDs

ALEXANDER JOSEPH ROGERS (Emergency Medicine UM CES)

with DOMINIC A BORGIALLI

\$20,826 09/30/2010 - 07/31/2011

University of California - Irvine

Untouchable Wealth: The Moral Exchange of New Wealth Among Women in an Urban Nepali Untouchable-Caste Community

DONALD S LOPEZ JR (Michigan Society of Fellows)

\$11,229 04/01/2011 - 03/31/2012

University of California - Lawrence Berkeley National Laboratory

Modeling-Thermo-electrochemistry, capacity degradation and mechanics with SEI layer 2

ANN MARIE SASTRY (Mechanical Engineering)

\$160,000 03/01/2010 - 12/31/2011

University of California - Los Angeles

Reducing Unhealthy Alcohol Use in Older Hispanic Day Laborers

KRISTEN L BARRY (Psych HlthSvc Outcome Research)

\$13,014 05/01/2011 - 04/30/2013

University of Hawaii

Self-Control as a Moderator for Effects of Mass Media on Adolescent Substance Use

SONYA DAL CIN (RCGD-General Research)

\$94,889 07/01/2010 - 04/30/2015

University of Iowa

Unintended Pregnancy Pharmacy Project

KAREN BELL FARRIS (PHARMACY Clin, Soc & Admin Sci)

\$46,485 01/01/2011 - 12/31/2011

University of Maryland, The

National Environmental Synthesis Center (EnSynC)

JOAN I NASSAUER (Sch of Nat Resources & Environ)

\$138,896 09/01/2011 - 08/31/2013

University of Massachusetts

Developing resist materials, coating method and large area flexible stamp for roll-to-roll Nanolithography

L JAY GUO (COE EECS - ECE - SSEL)

\$32,000 05/01/2011 - 04/30/2012

University of Miami, Florida, The

Albumin in Acute Stroke Trial: A Phase III Randomized Multicenter Clinical Trial of High-Dose Human Albumin Therapy for Neuroprotection in Acute Ischemic Stroke - NETT

WILLIAM G BARSAN (Emergency Medicine UM Adult)

\$1,092,000 06/01/2011 - 05/31/2012

University of Minnesota

Collaborative Research: Opossum Phylogenetics: A Window on S. America's Splendid Isolation

PHILIP MYERS (LSA Zoology Museum)

\$16,413 07/01/2011 - 04/30/2012

University of North Carolina

Targeted Genetic Analysis of T2D and Quantitative Traits

MICHAEL LEE BOEHNKE (Biostatistics Department)

with LAURA JEAN SCOTT

\$123,568 07/01/2011 - 05/31/2012

CCFA Clinical Research Alliance co-chair

PETER DOYLE HIGGINS (Int Med-Gastroenterology)

\$22,000 07/01/2011 - 06/30/2012

University of North Carolina-Chapel Hill

Early MRSA therapy in CF ? culture based vs. observant therapy (treat or observe) (STAR-too ? STtaph Aureus Resistance)

AMY G FILBRUN (Pediatrics-Pulmonary Medicine)

\$43,990 01/01/2011 - 09/30/2011

University of Pennsylvania

Positive Health: Longitudinal Data Subcommittee

CHRISTOPHER M PETERSON (LSA Psychology)

\$16,224 07/01/2011 - 11/30/2013

University of Pittsburgh*Pancreatic Cystic Reference Set*

RICHARD S KWON (Int Med-Gastroenterology)

\$35,520 06/01/2011 - 05/31/2012

University of Southern Denmark*Guest Professor at University of Southern Denmark: Ophthalmology at the Faculty of Health Sciences, University of Southern Denmark and Odense University Hospital*

TERRY SMITH (Ophthalmology & Visual Science)

\$63,828 08/15/2011 - 08/14/2014

University of Texas at Austin*Feasibility of a Web-based Smoking Cessation Programs of Vocational Students.*

VICTOR J STRECHER (Hlth Behavior & Hlth Ed Dept)

\$82,934 04/01/2011 - 03/31/2012

University of Texas Health Science Center at San Antonio*Phase 2 Blinded Validation of Protein Markers for Hepatocellular Carcinoma*

DAVID M LUBMAN (Surgery Department)

\$150,000 06/01/2011 - 05/31/2012

University of Virginia*Gender-related Differences in Abdominal Aortic Aneurysms*

PETER K HENKE (Vascular Surgery Section)

\$190,075 01/01/2011 - 11/30/2011

Upjohn, W. E., Institute for Employment Research*Evaluating Participant Self-Evaluation*

JEFFREY ANDREW SMITH (LSA Economics)

\$10,992 05/01/2011 - 08/01/2011

Vanderbilt University*The MIND USA Study*

ROBERT C HYZY (Int Med-Pulm./Critical Care)

\$41,671 03/15/2011 - 02/29/2012

Various Sponsors

Radiation Therapy Affiliate Agreement Program

SUZANNE M SELIG (Flint Dept Pub Hlth & Hlth Sci)
\$6,000 05/02/2011 - 05/01/2012

RECHARGE Protein Crystallography (Silva, Brazil)

JEANNE A STUCKEY (Life Sciences Institute-Admin)
\$4,277 01/03/2011 - 12/30/2011

RECHARGE NMR Spectroscopy Services

HENRY I MOSBERG (College of Pharmacy)
\$3,949 07/01/2011 - 06/30/2012

WIMS Center Full Member Advanced Technologies and Regeneration Medicine LLC (6/24/2011 - 6/23/2012)

YOGESH B GIANCHANDANI (COE EECS - ECE - WIMS - ERC)
\$50,000 06/24/2011 - 06/23/2012

Recharge: Child Restraint Testing

LAWRENCE W SCHNEIDER (UMTRI-Biosciences)
\$27,400 03/01/2007 - 02/28/2012

Recharge: Clinical Research Assays 6/30/12

DANIEL S MCCONNELL (Epidemiology Department)
\$15,885 07/01/2011 - 06/30/2012

Recharge: Wheelchair Restraint Testing

LAWRENCE W SCHNEIDER (UMTRI-Biosciences)
\$32,250 03/01/2007 - 02/28/2012

Recharge: Child Restraint Testing

LAWRENCE W SCHNEIDER (UMTRI-Biosciences)
\$14,460 03/01/2007 - 02/28/2012

RECHARGE MedChem Synthesis Core

HOLLIS D SHOWALTER (PHARMACY Medicinal Chemistry)
\$12,012 09/01/2011 - 08/31/2012

WIMS Center Full Member -Stryker Corp. 9/1/2010 - 8/31/2011

YOGESH B GIANCHANDANI (COE EECS - ECE - WIMS - ERC)
\$50,000 09/01/2010 - 08/31/2011

RECHARGE MIL Various Sponsors

MICHAEL J WELSH (Cell and Developmental Biology)
\$19,517 07/01/2011 - 06/30/2012

Veterans Affairs, Department of

Effectiveness of Tailored Activity Pacing for Symptomatic Osteoarthritis

PAUL MARK GORDON (Physical Medicine & Rehab Dept)
\$20,640 04/05/2011 - 09/30/2013

IPA Yafeng Qiu

MICHAL A OLSZEWSKI (Int Med-Pulm./Critical Care)
\$22,746 04/11/2011 - 09/30/2011

IPA Zhaozhu Zeng

BENJAMIN M SEGAL (Neurology Department)

\$17,191 04/01/2011 - 09/30/2011

IPA Praveen Rao

PRAVEEN KUMAR RAO (Neurology Department)

\$35,662 04/01/2011 - 09/30/2011

IPA Stephen Lalor

BENJAMIN M SEGAL (Neurology Department)

\$25,701 04/01/2011 - 09/30/2011

Silver Club-Turner Senior Resource Center VA-251-11-RQ-0130

DARLENE KNAPP RACZ (UMH Silver Club Programs)

\$102,000 07/01/2011 - 09/30/2011

Silver Club - Brown Chapel VA-251-11-RQ-0127

DARLENE KNAPP RACZ (UMH Silver Club Programs)

\$76,500 07/01/2011 - 09/30/2011

VA IPA for E Haak

GRACE L SU (Int Med-Gastroenterology)

\$17,511 05/18/2011 - 09/30/2011

IPA Agreement Extension_Sandra Wilcock

JOHN K FINK (Neurology Department)

\$7,433 09/01/2011 - 09/30/2011

IPA - Anna Polachini

JOHN D PIETTE (Int Med-General Medicine)

\$25,928 05/01/2011 - 09/30/2011

IPA Brian Mikuski

THEODORE S LAWRENCE (Radiation Oncology - Ann Arbor)

\$96,000 10/01/2010 - 07/31/2012

IPA Anna Eisenberg

AMY S B BOHNERT (Psych HlthSvc Outcome Research)

\$55,829 06/01/2011 - 05/31/2012

IPA Wang, Hui

DANIEL T EITZMAN (Int Med-Cardiology)

\$39,555 10/01/2010 - 06/30/2011

IPA Chelsea Melton

MARK ANDREW ILGEN (Psych HlthSvc Outcome Research)

\$8,945 06/15/2011 - 09/30/2011

IPA - Russo, Hana

DANIEL T EITZMAN (Int Med-Cardiology)

\$16,145 12/01/2009 - 05/10/2010

IPA Luo, Wei

DANIEL T EITZMAN (Int Med-Cardiology)

\$62,312 10/01/2010 - 09/30/2011

IPA Guo, Chiao

DANIEL T EITZMAN (Int Med-Cardiology)

\$45,473 10/01/2010 - 09/30/2011

Effectiveness of an Automated Walking Program Targeting Veterans with COPD

CAROLINE R RICHARDSON (Family Medicine)

\$174,200 07/22/2011 - 09/30/2013

IPA-Linda Nyquist

NEIL BURTON ALEXANDER (Int Med-Geriatric Medicine)

\$14,418 08/01/2011 - 09/30/2012

Geisser - IPA Agreement

MICHAEL E GEISSER (Physical Medicine & Rehab Dept)

\$4,193 04/01/2011 - 09/30/2011

RECHARGE: Small Molecule Synthesis (VA)

SCOTT D LARSEN (PHARMACY Medicinal Chemistry)

\$23,795 07/01/2011 - 09/30/2011

VA IPA for Sybil Boone

GRACE L SU (Int Med-Gastroenterology)

\$10,701 07/01/2011 - 09/30/2011

VA IPA for Brian Lillie

GRACE L SU (Int Med-Gastroenterology)

\$6,810 07/01/2011 - 09/30/2011

IPA-Ayowale Oladeji

NEIL BURTON ALEXANDER (Int Med-Geriatric Medicine)

\$10,622 07/06/2011 - 09/30/2011

IPA David Williams

DAVID A WILLIAMS (Anesthesiology Department)

\$12,051 04/01/2011 - 09/30/2011

Weinstein, Irving, Foundation Inc.

Hereditary Susceptibility in Colorectal Cancer

STEPHEN B GRUBER (Int Med-Molecular Med&Genetics)

\$10,000 04/01/2011 - 03/31/2012

West Virginia University

Brain pathways mediating seasonal reproduction

MICHAEL NEAL LEHMAN (Molec & Integrative Physiology)

\$192,696 03/01/2011 - 06/30/2012

Wisconsin Electric

WE Energies Health Management Program, Evaluation and HRAs

DEE W EDINGTON (Health Management Research Ctr)

\$126,788 07/01/2011 - 06/30/2013

Women's Dermatologic Society

Role of antimicrobial peptides in causing decreased incidence of acne in psoriasis patients

DANA LYNN SACHS (Dermatology Department)

\$10,000 01/03/2011 - 06/30/2011

Woods Hole Oceanographic Institute

MRI: Development of AUV Technologies for Long-Range Under-Ice Transects

RYAN M EUSTICE (Naval Arch & Marine Dept)

\$69,999 10/01/2010 - 09/30/2013

World Bank

Tracking Light From The Sky

BRIAN K MIN (CPS-Research)

\$5,055 04/08/2011 - 10/31/2011

Zimmer Dental

Evaluation of an atraumatic sinus floor elevation technique: A cadaver study.

TAE-JU OH (DENT Periodontics and Oral Med)

\$37,942 08/19/2011 - 08/18/2012