

THE UNIVERSITY OF MICHIGAN
REGENTS COMMUNICATION

ACTION REQUEST

Approved by the Regents
May 14, 2009

Subject: Intercollegiate Soccer Stadium

Action

Requested: Approval of Project and Authorization to Appoint an Architect

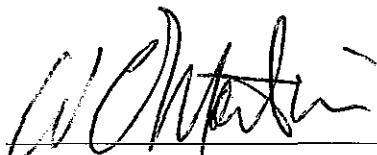
Background:

At the July 2007 meeting, the Board of Regents approved the creation of three new soccer fields in the vicinity of the Varsity Tennis Center. One of these fields will host the primary competitions of the women's and men's soccer teams (see attached map). Athletics is proposing to construct a new soccer stadium to add spectator amenities and player support facilities to the competition field. The project involves approximately 26,000 gross square feet of construction, including restrooms and concessions for spectators, a press area, two team locker rooms, and grandstand seating for 2,200 spectators. There will be no impact on parking from this project.

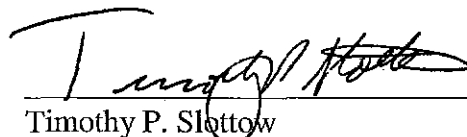
The estimated cost of the project is \$6,000,000. Funding will be provided from Athletic Department resources and gifts. The construction cash flow may be provided, all or in part, by increasing the commercial paper issuance under the commercial paper program, secured by a pledge of General Revenues, and authorized by the Board of Regents. The architectural firm of Jickling Lyman Powell Associates, Inc. will design the project. Design is scheduled to begin immediately, and we will return with a construction schedule when we seek approval of schematic design.

We recommend that the Board of Regents approve the Intercollegiate Soccer Stadium project as described and authorize commissioning Jickling Lyman Powell Associates, Inc. for its design.

Respectfully submitted,

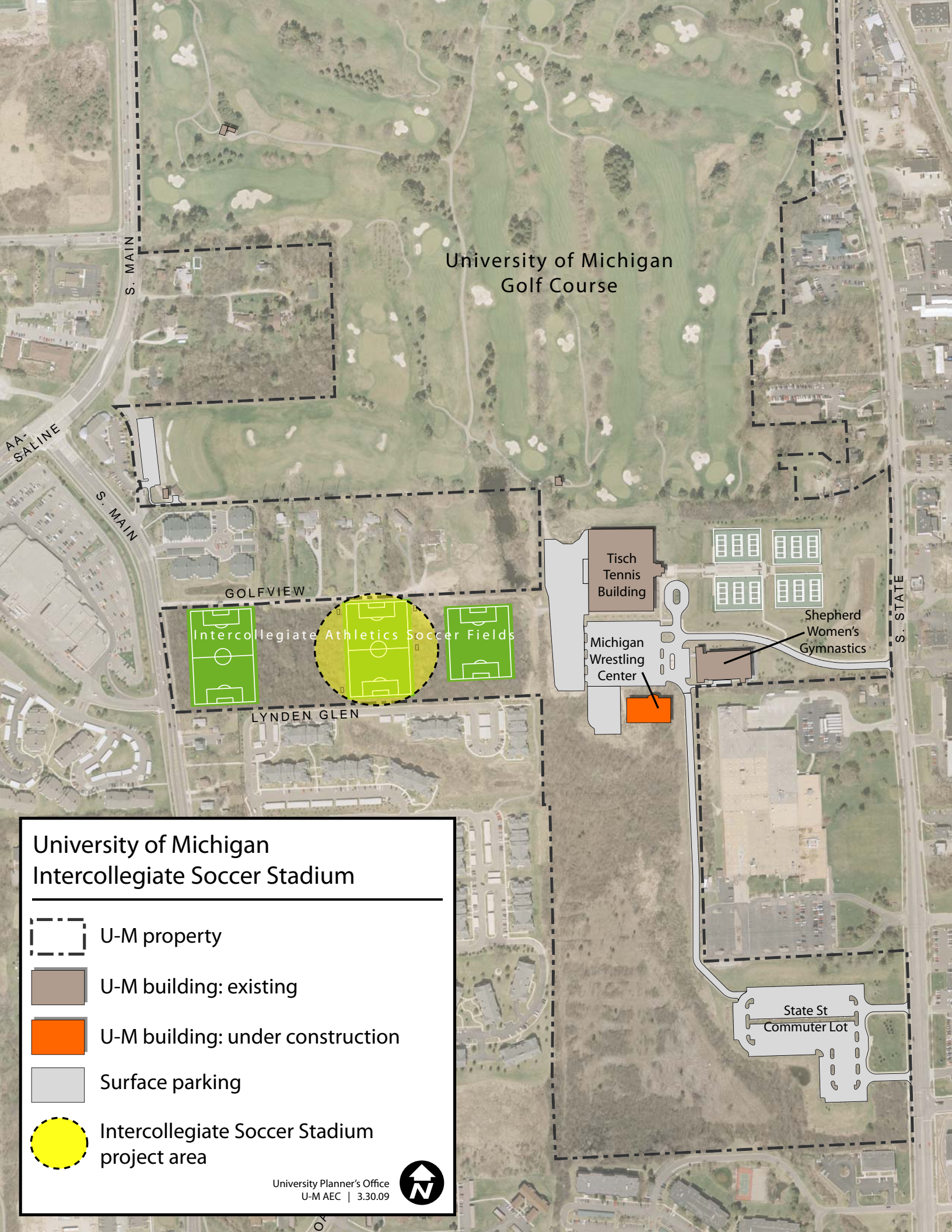


William C. Martin
Donald R. Shepherd Director of
Intercollegiate Athletics



Timothy P. Slottow
Executive Vice President and
Chief Financial Officer

May 2009
Attachment



University of Michigan
Golf Course

S. MAIN

AA-SALINE

S. MAIN

GOLFVIEW

Intercollegiate Athletics Soccer Fields

LYNDEN GLEN

Tisch
Tennis
Building






Michigan
Wrestling
Center

Shepherd
Women's
Gymnastics

S. STATE

State St
Commuter Lot

University of Michigan Intercollegiate Soccer Stadium

-  U-M property
-  U-M building: existing
-  U-M building: under construction
-  Surface parking
-  Intercollegiate Soccer Stadium project area

