

AWARDS PROCESSED
 Research and Other Sponsored Activities
 January 1, 2009 through January 31, 2009

Received by the Regents
 February 19, 2009

The awards detailed in this list were processed January 1, 2009 through January 31, 2009. The dollar values depict the best available estimate of the funding the University should receive over the life of the award. These values may be modified, as additional data become available relative to future funding prospects. These modifications are not reported in the attached list. As a result, the dollar values of awards presented in this list will differ from the year-end totals. The full amount of an award is recorded in the year in which it was received. Often these funds are expended over several years, making comparisons between awards and expenditures somewhat misleading. Research expenditures are presented here to provide a trend line for the current fiscal year.

	Number of Awards FY 2008	Number of Awards FY 2009	% Change	Value of Awards FY 2008	Value of Awards FY 2009	% Change
Total Awards Processed (January)	144	155	7.6%	\$29,281,489	\$57,013,435	94.7%
Research Awards	99	122	23.2%	\$27,769,606	\$49,926,604	79.8%
Research Training	3	3	0.0%	\$186,318	\$2,952,000	1484.4%
Other Sponsored Activity	42	30	(28.6%)	\$1,325,565	\$4,134,831	211.9%
<hr/>						
Total Awards Processed Fiscal Year to Date	1,570	1,581	0.7%	\$583,724,369	\$649,076,414	11.2%
Research Awards	1,135	1,162	2.4%	\$535,132,478	\$583,590,664	9.1%
Research Training	79	54	(31.6%)	\$21,550,520	\$18,667,548	(13.4%)
Other Sponsored Activity	356	365	2.5%	\$27,041,371	\$46,818,202	73.1%

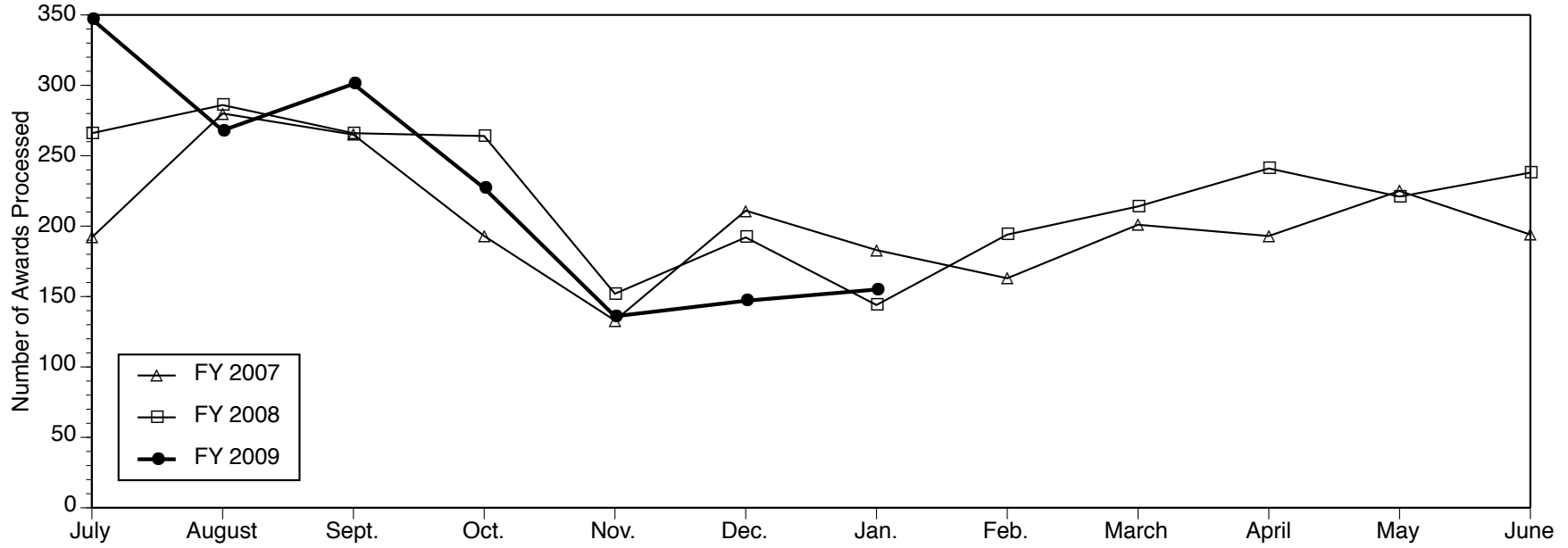
January 2009 awards experienced robust activity when compared with the previous January. While there were only eleven more awards their award value was much stronger. There were 21 awards valued in excess of \$1.0 million totaling \$36.2 million this past January, compared with nine such awards totaling \$15.3 million the previous January. The large increase in Research Training is caused by two large awards totaling \$2.9 million. No such large awards were received to - date in the previous fiscal year.

----- RESEARCH EXPENDITURES -----

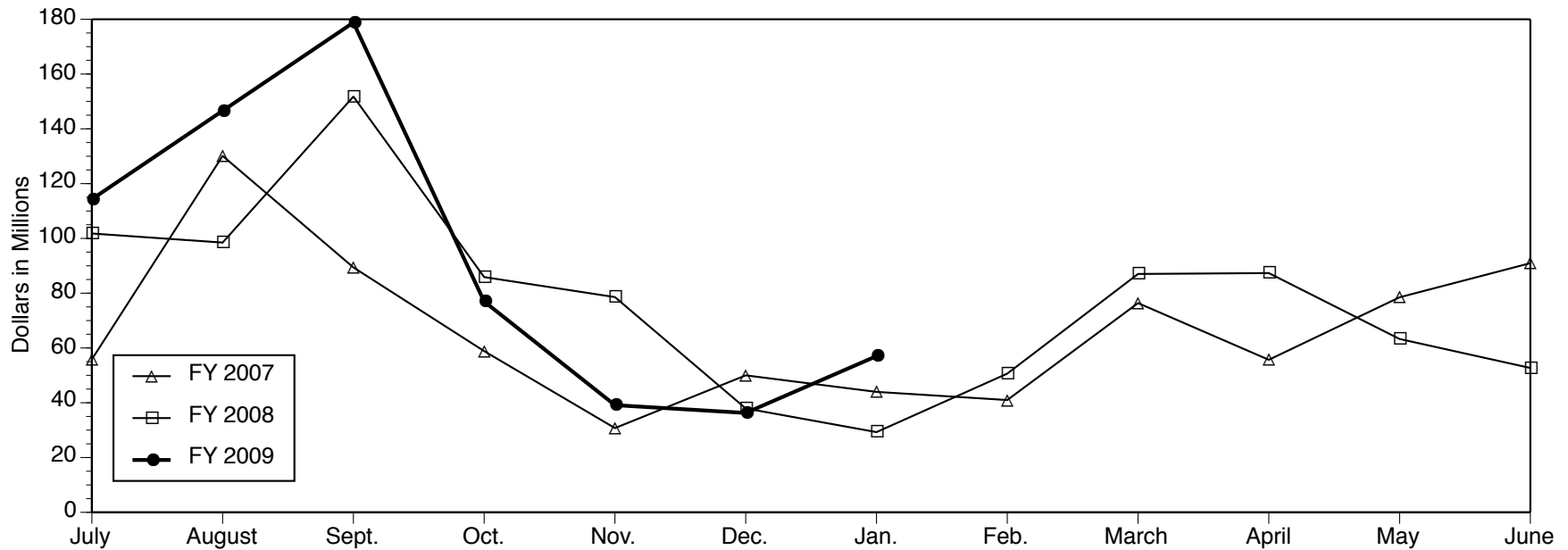
	Federal Expendable Restricted	Other Funds	Total Expenditures
December 2008	\$318,569,582	\$142,918,370	\$461,487,952
December 2007	\$309,400,624	\$116,799,659	\$426,200,283
Percent Change	3.0%	22.4%	8.3%

Source: Division of Research Development and Administration

Number of Awards Processed



Dollar Value of Awards Processed



Data Source: Division of Research Development and Administration

PROJECTS ESTABLISHED FOR RESEARCH AND OTHER SPONSORED ACTIVITIES

January 1, 2009 through January 31, 2009

The projects listed here by sponsor were established during the month designated in the heading above. For each project, the listing includes the project title, the project directory (and his or her unit affiliations), faculty or primary research staff participating in the project (and their unit affiliations), the amount awarded for the period, and the project period. NOTE: When more than one unit is listed for the project director, the unit responsible for the project is given first.

Abraxis BioScience, Inc.

UMCC 2008.033: A Phase I/II Trial of ABI-008 (nab-docetaxel) in Patients with Hormone-refractory Prostate Cancer
MAHA HUSSAIN (Int Med-Hematology/Oncology)
\$110,073 12/09/12 - 12/08/15

American Association of Endodontists, Research and Education Foundation of

Angiogenic Response During Pulpitis
TATIANA M BOTERO
(Cariology, Restor Sci & Endo)
\$14,740 09/02/12 - 07/01/14

American Bar Association

After the JD Wave 1: Geocoding
BETH-ELLEN PENNELL (Survey Research Organization)
\$7,055 01/06/13 - 04/01/13

American Chemical Society

Mechanism of Aldehyde Decarbonylase; A Novel Enzyme Involved in Hydrocarbon Biosynthesis
E NEIL G MARSH (LSA Chemistry)
\$100,000 02/02/13 - 09/01/15

Intermediate-Band Optoelectronic Transitions in ZnTeO for High-Efficiency Solar Cells
JAMIE DEAN PHILLIPS (CoE EECS-Ssel)
\$100,000 01/02/13 - 09/01/15

Small-Angle Dynamic Light Scattering of Dilute Poly(ethylene oxide) Aggregates
MICHAEL J SOLOMON (Chemical Engineering Dept)
\$100,000 01/02/13 - 09/01/15

American Diabetes Association, Inc.

Plasticity of Interstitial Cells of Cajal In Diabetic Gastropathy
SHI-YI ZHOU (Int Med-Gastroenterology)
\$90,000 01/02/13 - 01/01/15

American Epilepsy Society

Novel Method to Study Human Epilepsy Gene Mutations
JACK M PARENT (Neurology Department)
With LORI L ISOM (Pharmacology Department); MIRIAM H MEISLER (Human Genetics Department)
\$50,000 01/02/13 - 01/01/14

American Heart Association, Midwest Affiliate

Regulation of G(alpha) by GRK2 and RGS Proteins
JOHN J G TESMER (Life Sciences Institute-Admin)
\$52,000 01/02/13 - 01/01/15

American Iron and Steel Institute

CoE-InterPro Student Capstone Research Projects - Fall 2008 Term
HUEI PENG (CoE Interdisc Prof Program)
\$51,000 07/02/12 - 05/01/13

Ann Arbor Area Community Foundation

Family Support Project
BETH SPENCER (Geriatrics Social Work)
\$10,000 12/21/12 - 12/20/13

Argonne National Laboratory

Adaptation of the SHARP Modeling and Simulation Capability for VHTR Development and Design

WILLIAM R MARTIN (Nuclear Eng & Radiological Sci)

With THOMAS J DOWNAR (Nuclear Eng & Radiological Sci); EDWARD W LARSEN (Nuclear Eng & Radiological Sci); JOHN C LEE (Nuclear Eng & Radiological Sci)

\$199,928 10/07/12 - 10/03/13

Ariad Pharmaceuticals, Inc.

UMCC 2008.023 Amendment "A Phase 1 Dose Escalation Trial to Determine the Safety, Tolerability and Maximum Tolerated Dose of Oral AP24534 in Patients with Refractory or Advanced Chronic Myelogenous Leukemia and Other Hematologic Malignancies, AP24534

MOSHE TALPAZ (CTO-Phase 1)

\$6,743 05/02/12 - 11/02/13

Australian Health Management Group

CLONE: Health Management Program

DEE W EDINGTON (Health Management Research Ctr)

\$40,000 10/02/12 - 10/01/13

AutoNation, Inc.

HRAs and Reports for Clients

DEE W EDINGTON (Health Management Research Ctr)

\$60,000 01/02/13 - 01/01/14

Carpenter, E. Rhodes and Leona B, Foundation

Tradition Transformed: Chang Ku-nien, Chinese Master Painter of the 20th Century

JAMES C STEWARD (Museum of Art)

\$25,000 01/02/13 - 07/01/14

Catholic Social Services

Adult Day Services - Silver Club

ELIZABETH BROCK SPENCER (Geriatrics Social Work)

\$41,250 10/02/12 - 10/01/13

Centocor, Inc.

Centocor/Michigan Postdoctoral Training Program

VICTOR DIRITA (Graduate/Postdoc Roll-up)

\$1,900,000 12/23/12 - 12/22/17

A Multicenter International Observational Study of the Long-term Safety of Infliximab (Remicade) Protocol #C0168T45 "Results: Remicade Safety Under Long-Term, Study"

SEWON KANG (Dermatology Department)

\$250 04/02/11 - 01/01/18

Evaluation of the Expression Profile of Inflammation and Fibrosis Mediators in Skin, Blood and Urine from Subjects with Diffuse Systemic Sclerosis

KRISTINE PHILLIPS (Int Med-Rheumatology)

With JAMES SEIBOLD (Int Med-Rheumatology)

\$95,000 01/07/13 - 01/01/15

Cornell University

NNIN Equipment Purchase

KHALIL NAJAFI (CoE EECS-Ssel)

\$177,277 09/02/12 - 09/01/15

Creighton University

Study of Reduced Bone Quality as a Cause of Fractures

MICHAEL D MORRIS (LSA Chemistry)

With STEVEN A GOLDSTEIN (Orthopaedic Surgery)

\$69,021 04/02/12 - 04/01/13

CTI Clinical Trial and Consulting Services

TACRO 2018: A Phase 2, Open Label, Multi-center, Randomized Trial to Demonstrate the Pharmacokinetics of LCP-Tacro Tablets Once Daily and Prograf Capsules Twice Daily in Adult De Novo Liver Transplant Patients

SHAWN J PELLETIER (General Surgery Section)

\$201,597 12/09/12 - 01/01/15

Cystic Fibrosis Foundation Therapeutics, Inc.

Therapeutics Development Network

SAMYA Z NASR (Pediatrics-Pulmonary Medicine)

\$108,000 01/02/13 - 01/01/14

Damon Runyon Cancer Research Foundation
Modulation of Notch Signaling to Control Graft-versus-host-disease and Preserve the Anti-tumor Activity of Alloreactive T Cells

IVAN PATRICK MAILLARD (Life Sciences Institute-Admin)

With YI ZHANG (Int Med-Hematology/Oncology)

\$450,000 01/02/13 - 01/01/16

Defense, Department of-Air Force, Department of the

Chemistry and Transport Problems for Jet Fuel Combustion

ANGELA VIOLI (Mechanical Engineering)

\$604,564 12/02/12 - 12/01/15

Defense, Department of-Defense Threat Reduction Agency

Exploration and Exploitation of High Quantum Efficiency Electromagnetic Radiation

ROSEANNE J SENSION (LSA Chemistry)

With DUNCAN G STEEL (COE EECS - ECE - OPT)

\$1,498,203 01/23/13 - 02/02/16

Defense, Department of-National Security Agency

Applications of Algebraic Computations in Geometry

IGOR KRIZ (LSA Mathematics)

\$60,428 01/23/13 - 01/22/15

Defense, Department of-Navy, Department of the

Measurement of Skin Friction From a Turbulent Boundary Layer for Various Surfaces and Coatings

STEVEN L CECCIO (Naval Arch & Marine Dept)

With MARC PERLIN (Naval Arch & Marine Dept)

\$137,562 11/07/12 - 01/01/14

Leading Edge Architecture for Prototyping Systems Support

DAVID JACOB SINGER (Naval Arch & Marine Dept)

With ROBERT F BECK (Naval Arch & Marine Dept); KEVIN JOHN

MAKI (Naval Arch & Marine Dept);

ATUL PRAKASH (COE EECS - CSE Division); ARMIN W TROESCH

(Naval Arch & Marine

Dept)\$5,000,000 12/31/12 - 12/30/17

The Effects of Nanoparticles on Tribology of Lubricants

ANGELA VIOLI (Mechanical Engineering)

\$100,000 01/31/13 - 01/30/14

DTE Energy

DTE Energy - MPSC PHEV Pilot Proposal

IAN HISKENS (MI Memorial Phoenix Energy Ins)

With MICHAEL TODD

ANUSKIEWICZ (Transportation Systems Group); DUNCAN S

CALLAWAY (Sch of Nat Resources & Environ); RICHARD T CURTIN

(SRC-Surveys of Consumers);

HOSAM K FATHY (Mechanical Engineering); ZORAN S FILIPI

(Mechanical Engineering);

GREGORY A KEOLEIAN (Sch of Nat Resources & Environ); JOHN C

LEE (Nuclear Eng & Radiological

Sci); THOMAS PEYTON LYON (Sch of Nat Resources & Environ); CHRIS

MI (Dbn Col of Eng-Electric & Comp); JOHN L SULLIVAN

(Transportation Systems Group);

THOMAS H ZURBUCHEN (CoE Undergraduate Education)

\$2,156,164 09/05/12 - 08/01/14

Elan Pharmaceutical Research Corporation

ELAN Bapineuzumab (ELN115727-301/302)PET-Sub-Study

ROBERT A KOEPPE (Radiology-Nuclear Medicine)

\$388,108 10/09/12 - 04/09/14

Electric Power Research Institute (EPRI)
Identifying Mechanisms and Mitigation Strategies
for Irradiation Assisted Stress Corrosion Cracking
of Austenitic Steels in LWR Core Components

GARY S WAS (Nuclear Eng &
Radiological Sci)
\$1,183,156 01/02/13 - 01/01/18

Electro Chemical Finishing Company
STTR Phase II: Development of Amorphous
Alloy Surface Coatings as Replacement for
Chromate

JOHN C BILELLO (Materials Science &
Engin.)
\$195,000 01/02/13 - 01/01/15

Energy, Department of
Simulations of Self-assembly of Tethered
Nanoparticle Shape Amphiphiles

SHARON C GLOTZER (Chemical
Engineering Dept)
\$50,568 09/02/11 - 12/01/12

Simulation of Self-Assembly of Tethered
Nanoparticles Shape Amphiphiles

SHARON C GLOTZER (Chemical
Engineering Dept)
\$160,000 12/02/12 - 12/01/13

Intense Laser Interactions with Low Density
Plasmas Using OMEGA EP

KARL MICHAEL KRUSHELNICK (CoE
EECS-Usl)
With ANATOLY M MAKSIMCHUK
(CoE EECS-Usl); VICTOR P
YANOVSKY (CoE EECS-Usl)
\$180,000 12/02/12 - 12/01/14

Federal Reserve System

Household Financial Behavior - 2009

RICHARD T CURTIN (SRC-Surveys of
Consumers)
\$59,556 01/02/13 - 01/01/14

**FIA Foundation for the Automobile and
Society**

Strategic Worldwide Transportation 2020

MICHAEL SIVAK (UMTRI-Human
Factors)
With MICHAEL J FLANNAGAN
(UMTRI-Human Factors)
\$25,000 01/02/13 - 01/01/14

Fibromuscular Dysplasia Society of America

Fibromuscular Dysplasia Patient Registry

JAMES B FROEHLICH (Int Med-
Cardiology)
\$50,143 02/01/13 - 02/02/14

Flint Community Schools

Transition to Teaching

ROSE A CASEMENT (Flint Education)
\$54,500 10/02/11 - 10/01/12

Ford Foundation

Religious Diversity in the Public Research
University

PATRICIA Y GURIN (LSA Psychology)
With KELLY E MAXWELL (UG:
InterGroup Relations)
\$60,000 10/02/12 - 10/01/14

Genentech, Inc.

2008.035: A Randomized, Placebo-Controlled
Phase II Study of GDC-0449 (Systemic Hedgehog
Antagonist) with Concurrent Chemotherapy and
Bevacizumab as First-line Therapy for Metastatic
Colorectal Cancer

MARK M ZALUPSKI (Int Med-
Hematology/Oncology)
\$729,584 02/16/13 - 12/16/14

**Health and Human Services, Department of-
Centers for Disease Control and Prevention**

Translating Research Into Action for Diabetes
WILLIAM H HERMAN (Metabolism,
Endo & Diabetes)

\$585,492 02/01/13 - 02/01/14

Payer Policies Related to Circumcision

MARC A ZIMMERMAN (Hlth Behavior
& Hlth Ed Dept)
With SARAH J CLARK (Pediatrics-
Ambulatory Care Pgm); GARY L
FREED (Pediatrics-Ambulatory Care
Pgm)
\$30,607 09/30/12 - 09/30/13

**Health and Human Services, Department of
National Institutes of Health**

Family Planning Programs and the Health and
Fertility of US Women, 1960-1980

MARTHA J BAILEY (LSA Economics)
\$148,667 12/09/12 - 12/01/14

Molecular Sub-Typing of Prostate Cancer Based
on Recurrent Gene Fusions

ARUL M CHINNAIYAN (Ctr fr
Translational Pathology)

With ROHIT MEHRA (Pathology
Department); JAMES E MONTIE
(Urology Surgery); RAJAL B SHAH
(Pathology Department);
ALEXANDER TSODIKOV
(Biostatistics Department); JOHN
THOMAS WEI (Urology Surgery)
\$1,236,000 03/02/13 - 01/01/18

Compliant Thoracic Artificial Lungs

KEITH E COOK (General Surgery
Section)

With JOSEPH L BULL (Biomedical
Engineering)
\$1,447,940 01/02/13 - 01/01/17

Variation in Antihypertensive Prescribing Patterns
in Children

GARY L FREED (Pediatrics-Ambulatory
Care Pgm)
\$688,500 01/02/13 - 01/01/18

Mechanisms of Adrenal Differentiation

GARY D HAMMER (Metabolism, Endo
& Diabetes)
With JAMES DOUGLAS ENGEL
(Cell and Developmental Biology)
\$1,299,147 02/02/13 - 02/01/17

FASEB Summer Conference on Ion Channel
Regulation

LORI L ISOM (Pharmacology
Department)
\$20,000 01/02/13 - 01/01/14

Therapeutic Misconception and the Ethics of
Sham Surgery Controls in PD Research

SCOTT YUNG HO KIM (Depression
Center)

With RAYMOND G DE VRIES (Med
Ed/Ofc of Ed Resources&Res);
HYUNGJIN MYRA KIM (Ctr
Statistical Consul & Res)
\$1,393,176 03/02/13 - 03/01/17

Monokine Gene Expression /
Regulation in Lung Injury

STEVE L KUNKEL (Pathology
Department)

With YALI DOU (Pathology
Department); THEODORE J
STANDIFORD (Int Med-
Pulm./Critical Care)
\$1,884,925 01/02/13 - 01/01/18

CD24 in Cancer Resistance and Immunotherapy

YANG LIU (General Surgery Section)

With DAVID M LUBMAN (Surgery
Department); PAN ZHENG (Surgery
Department)
\$1,276,355 01/02/13 - 01/01/18

Neural Substrates of Contextual Memory in Fear
Extinction

STEPHEN A MAREN (LSA Psychology)
With JOSHUA DAMIEN BERKE
(LSA Psychology)
\$1,738,880 01/11/13 - 12/01/13

The Role of DEK in the Development of Arthritis

NIRIT MOR-VAKNIN (Int Med-
Infectious Diseases)
\$226,356 12/27/12 - 12/01/15

Neuropeptide Regulation of Enteropancreatic
Function

MICHAEL W MULHOLLAND (Surgery
Department)
With WEIZHEN ZHANG (General
Surgery Section)
\$1,832,191 01/02/13 - 01/01/18

Environment, Novel Aging Outcomes, and
Genetics

SUNG KYUN PARK (Environmental
Health Sciences)
\$630,771 01/02/13 - 01/01/18

A Phase I/II Clinical Trial of Intravenous (IV) Calcitriol With Fixed Dose of Cisplatin and Docetaxel in Advanced Non-Small Cell Lung Cancer

NITHYA RAMNATH (Int Med-Hematology/Oncology)

With DEAN E BRENNER (Int Med-Hematology/Oncology)

\$577,014 07/02/12 - 01/31/14

Altered Excitatory Neurotransmission After Brain Trauma

LESLIE SATIN (Pharmacology Department)

\$799,655 07/02/12 - 01/01/15

Myotubularin and the Pathogenesis of Myotubular Myopathy

FAYE S SILVERSTEIN (Pediatrics-Neurology)

With EVA L FELDMAN (Neurology Department)

\$640,400 12/02/12 - 12/01/17

TLR9 Mediated Dendritic cell responses in Hypersensitivity Pneumonitis

THEODORE J STANDIFORD (Int Med-Pulm./Critical Care)

\$667,203 01/02/13 - 01/01/18

Statistical Methods for Cancer Biomarkers

JEREMY M G TAYLOR (Biostatistics Department)

With MICHAEL R ELLIOTT (Biostatistics Department)

\$744,118 01/02/13 - 01/01/16

Design of Bivalent SMAC Mimetics

SHAOMENG WANG (Int Med-Hematology/Oncology)

With ZANETA NIKOLOVSKA-COLESKA (Int Med-Hematology/Oncology); CHAO-YIE YANG (Int Med-Hematology/Oncology)

\$1,534,100 01/02/13 - 12/01/17

Novel Small-molecule Inhibitors of Bcl-2/Bcl-x1 Proteins

SHAOMENG WANG (Int Med-Hematology/Oncology)

With SAMI MALEK (Int Med-Hematology/Oncology)

\$2,365,128 05/02/12 - 05/01/14

How Does Misregulation of PI3,5P2 Signaling Lead to Neurodegeneration?

LOIS S WEISMAN (Life Sciences Institute-Admin)

\$1,689,845 01/02/13 - 12/01/17

Protein Expression in Failing Human Hearts

MARGARET V WESTFALL (Cardiac Surgery Section)

With SHARLENE M DAY (Int Med-Cardiology); DAVID E MISEK (General Surgery Section)

\$424,875 12/24/12 - 12/01/14

Dietary Regulation of Pancreatic Digestive Enzymes

JOHN ANDREW WILLIAMS (Molec & Integrative Physiology)

With STEPHEN A ERNST (Cell and Developmental Biology)

\$1,649,369 01/21/12 - 12/01/17

The Mucolipin TRP Ion Channels

HAOXING XU (LSA

Molec./Cell./Develop. Bio)

\$1,653,090 01/16/13 - 01/01/18

Helen L. Kay Charitable Private Foundation

The Hedgehog Pathway in Cancer Development in Mouse Model

ANDRZEJ A DLUGOSZ (Dermatology Department)

\$57,816 01/02/13 - 01/01/15

Hudson Alpha Institute for Biotechnology

HudsonAlpha Cancer Genome Characterization Center

JUN LI (Human Genetics Department)

\$25,404 09/02/12 - 09/01/13

Intelligent Prosthetic Systems

Testing of Prototype Prosthetic Foot

ARTHUR D KUO (Mechanical Engineering)

\$120,000 01/02/13 - 01/01/14

International Truck and Engine Corporation (NAVISTAR)

Recharge: PIT Testing

TIMOTHY J GORDON (UMTRI-Engineering Research)

With STEVEN MICHAEL

KARAMIHAS (UMTRI-Engineering Research)

\$11,900 12/02/12 - 01/02/13

Iowa State University

ERC: Center for Biorenewable Chemicals

ERAN PICHERSKY (LSA

Molec./Cell./Develop. Bio)

\$166,660 09/02/12 - 09/01/13

Johnson & Johnson

Hsp70 - Potential Drug Target in

Neurodegenerative Diseases

JASON EDWARD GESTWICKI (Life Sciences Institute-Admin)

\$100,000 01/02/13 - 01/01/14

Inflammation and Obesity

ALAN R SALTIEL (Life Sciences Institute-Admin)

\$150,000 01/02/13 - 01/01/14

Johnson, Robert Wood, Foundation

RWJ Health Confidence Index

RICHARD T CURTIN (SRC-Surveys of Consumers)

\$307,004 02/16/13 - 02/15/14

Prevention of Intimate Partner Violence

MIEKO YOSHIHAMA (School of Social Work)

\$29,170 01/02/13 - 06/01/13

Juvenile Diabetes Research Foundation

International (JDRF)

Role of TSC-mTORC1 Pathway for Podocyte Injury in Diabetic Nephropathy

KEN INOKI (Life Sciences Institute-Admin)

\$445,500 03/02/13 - 02/29/16

Kettering Foundation

Assessing the Impact of Habitat for Humanity on Partner Families in Detroit

LARA CHRISTINE RUSCH (Dbn CASL-Social Sciences)

With JULIO LUIS BORQUEZ (Dbn CASL-Social Sciences); A TREVOR

THRALL (Dbn CASL-Social Sciences)

\$10,000 02/02/13 - 02/01/14

Knight, James A. and Faith, Foundation

Empowering Women and Children Exposed to Intimate Partner Violence

SANDRA A GRAHAM-BERMANN (LSA Psychology)

\$11,000 12/02/12 - 12/01/13

Leadership for Safe Asian Communities (LSAC)

MIEKO YOSHIHAMA (School of Social Work)

\$10,000 01/02/13 - 01/01/14

Leakey, L. S. B., Foundation

Locomotor Development in Wild Chimpanzees

LAURA M MACLATCHY (LSA Anthropology)

\$12,000 12/17/12 - 03/02/15

Gestural Communication and Social Relationships in Wild Chimpanzees

JOHN C MITANI (LSA Anthropology)

\$6,100 12/17/12 - 02/01/15

Medical College of Wisconsin

Proposal for Pilot Workshops and a Training Program for Faculty Development

MARGARET DEWAR (Community Service Learning)

With MATTHEW COUNTRYMAN (LSA American Culture); JEFFREY

HOWARD (Community Service Learning)

\$10,000 01/02/13 - 01/01/14

Medtronic, Inc.

Historical Mortality Rates Following Treatment of Complicated, Acute Type B Aortic Dissection

HIMANSHU J PATEL (Cardiac Surgery Section)

\$39,300 12/19/12 - 12/18/13

Merck and Company, Inc.

UMCC 2008.095: Phase 2 Trial of Vorinostat plus Tacrolimus & Mycophenolate to Prevent Graft Host Disease Following Reduced Intensity Conditioning Related Donor Allogeneic Transplant

PAVAN R REDDY (Int Med-Hematology/Oncology)

\$378,125 12/19/12 - 01/01/15

Merck Company Foundation

Alliance Program Office for Diabetes

NOREEN M CLARK (Hlth Behavior & Hlth Ed Dept)

With CATHLEEN M CONNELL (Hlth Behavior & Hlth Ed Dept)

\$1,250,000 12/09/12 - 01/01/18

Michigan Campus Compact

MLK Strive for College Challenge Grant

RENEE COLEEN ZIENTEK (Flint VC for Institutional Adv)

\$750 11/02/12 - 02/03/13

Michigan Critical Care Consultants, Inc.

Development of a Compact Cardiopulmonary Support Device (CCSD)

KEITH E COOK (General Surgery Section)

\$77,450 09/16/12 - 08/01/13

Michigan Engineering Services

Support for STTR Topic N06-T016 Advanced System of Systems Design Capability

DAVID JACOB SINGER (Naval Arch & Marine Dept)

\$150,000 11/02/12 - 03/02/13

Michigan State University

Pathways to a Child Welfare Certificate

KATHLEEN C FALLER (School of Social Work)

\$18,000 10/02/12 - 01/01/13

Novel Nano Biocarriers for Continuous Saccharification of Biomass Using Whole Microbial Cell

JINSANG KIM (Materials Science & Engin.)

\$30,000 06/02/12 - 06/01/14

Michigan, State of, Community Health, Department of

Measuring Psychiatric Problems in Michigan Correctional Facilities

BRANT E FRIES (Institute of Gerontology)

\$332,902 10/02/12 - 10/01/13

Michigan, State of, Human Services, Department of

Michigan AmeriCorps Partnership - 2008-09 - Supplemental Funds

MARGARET DEWAR (Community Service Learning)

\$56,034 09/02/12 - 09/01/13

Michigan, State of, Natural Resources, Department of

Development of a GIS for Inventory, Classification and Management of Non-Game Wildlife in Great Lakes Waters

EDWARD S RUTHERFORD (Sch of Nat Resources & Environ)

\$81,500 10/02/12 - 10/01/13

Michigan, State of, Transportation, Department of

Economic Benefit Analysis

GEORGE A FULTON (IRLEE)

\$70,000 12/03/12 - 05/01/13

Midwest Nursing Research Society

Patient Safety and Call Light Use & Responsiveness

HUEY-MING TZENG (SON-(Div III) Div of Nursing)

With DAVID L RONIS (School of Nursing)

\$10,000 04/02/13 - 04/01/14

Mildred Swanson Foundation

Adaptive Cognitive Assessment Laboratory: Educational Liaison Program

SETH A WARSCHAUSKY (Physical Medicine & Rehab Dept)

\$25,000 01/02/12 - 01/01/14

Momenta Pharmaceuticals, Inc

A Randomized, Multi-center, Open-label, Parallel Group Feasibility Study to Determine the Safety and Efficacy of the Rationally Engineered Heparin M118 vs UFH in Subjects with Stable Coronary Artery Disease Undergoing Percutaneous Coronary Intervention

HITINDER SINGH GURM (Int Med-Cardiology)

\$6,000 11/18/12 - 04/01/13

Mott, Charles Stewart, Foundation

The Launch Pad

JOEL E RASH (Cntr for Entrpnsph and Bus Dev)

\$64,946 06/02/12 - 06/01/13

National Aeronautics and Space**Administration**

Large-Scale Structure Meets WMAP: Tests of Isotropy of the Universe

DRAGAN HUTERER (LSA Physics)

\$361,943 12/09/12 - 12/08/15

National Archives and Records Administration

Archival Metrics and User Evaluation for Government Archives

ELIZABETH YAKEL (School of Information)

\$149,969 01/02/13 - 01/01/15

National Ataxia Foundation

Cerebellar Ataxia: Three Novel Genetic Forms

SHIRLEY R RAINIER (Neurology Department)

With JOHN K FINK (Neurology Department)

\$15,000 01/02/13 - 01/01/14

National Science Foundation

REU: Simplified Bidding and Solution Structures for Combinatorial Procurement Auctions

AMY ELLEN MAINVILLE COHN (Industrial Operations)

\$6,000 05/02/11 - 09/01/13

Request for Participant Support for the Fourth Tri-Annual Conference on Foundations of Molecular Modeling and Simulation (FOMMS 2009)

SHARON C GLOTZER (Chemical Engineering Dept)

\$40,000 01/16/13 - 07/01/14

Uranium from Africa and the Power of Nuclear Things

GABRIELLE HECHT (LSA History)

\$109,778 06/02/13 - 06/01/15

CAREER: Dissecting the Regulation of Ribosome Assembly by the Essential GTPase Bms1

KATRIN KARBSTEIN (LSA Chemistry)

\$694,028 03/02/13 - 03/01/18

GEM: Assessing the Storm-Time Magnetic Distortion in the Inner Magnetosphere

MICHAEL WARREN LIEMOHN (Space Physics Research Lab)

\$396,835 02/02/13 - 06/01/16

CAREER: Nanoengineered Sensing Skins for Structural Health Monitoring - An Integrated Research and Education Career Experience

JEROME P LYNCH (Civil & Environmental Engr)

\$400,000 01/16/13 - 01/01/18

CAREER: Study of Heat and Charge Transport in Metal-Molecule-Metal Junctions

PRAMOD SANGI REDDY (Mechanical Engineering)

\$403,138 05/02/13 - 05/01/18

Learning and Adapting to Spatio-Temporal Anomalies

CLAYTON D SCOTT (CoE EECS-Cspl)

With ALFRED O HERO III (CoE EECS-Cspl)

\$564,341 09/02/12 - 09/01/15

Direct Visualization of Strain-Induced Yielding in Colloidal Gels

MICHAEL J SOLOMON (Chemical Engineering Dept)

\$300,000 06/02/13 - 06/01/16

Graduate Research Fellowship Program

JANET A WEISS (Graduate School Administration)

\$1,000,000 02/02/11 - 02/01/16

CO2 Diffusion in Basaltic Melt

YOUXUE ZHANG (LSA Geological Sciences)

\$330,160 01/16/13 - 01/01/17

National Surgical Adjuvant Breast and Bowel Project (NSABP) Foundation, Inc.

A Study to Evaluate Different Decision-Making Approaches Used by Women Known to be at High Risk for Breast Cancer

ANGELA TSAI FAGERLIN (Behavioral & Decision Sciences)

\$41,426 09/02/12 - 06/01/13

North Dakota Farm Bureau Foundation

Farmer's Preferences for Use of Hearing Protectors

MARJORIE COOK MCCULLAGH (SON-(Div II) Division of Hlth)

\$2,400 10/02/12 - 10/01/13

nv Bekaert sa

Evaluation of Seismic Behavior of Slender Fiber Reinforced Concrete Coupling Beams

GUSTAVO J PARRA-MONTESINOS (Civil & Environmental Engr)

\$28,000 12/02/13 - 12/01/14

Packard, David and Lucile, Foundation

Developing, Evaluating and Disseminating Case Studies of Marine Ecosystem-Based Management

STEVEN L YAFFEE (Sch of Nat Resources & Environ)

\$338,511 01/02/13 - 10/01/14

Pall Corporation

Carbon Nanotube Growth Within Porous Filter Media

ANASTASIOS JOHN HART (Mechanical Engineering)

\$54,621 09/02/12 - 09/01/13

Paralyzed Veterans of America (PVA)

Nanofiber Scaffolds for Directed Nerve Regeneration

JOSEPH MICHAEL COREY (Neurology Department)

\$150,000 01/02/13 - 01/01/15

Prostate Cancer Foundation

PCF-safeway S.T.A.R. TEMT Research Program

KENNETH J PIENTA (Int Med-Hematology/Oncology)

\$135,000 09/16/12 - 09/15/15

Research to Prevent Blindness, Inc.

Unrestricted Grant

PAUL R LICHTER (Ophthalmology & Visual Science)

\$110,000 01/02/13 - 01/01/14

Visual Cycle Defects in Inherited Retinal Degeneration (RPB Senior Sci. Invest Award)

DEBRA A THOMPSON (Ophthalmology & Visual Science)

\$75,000 01/02/13 - 01/01/14

Reuters Limited

Surveys of Consumers Data Co-branding and Distribution, 2009

RICHARD T CURTIN (SRC-Surveys of Consumers)

\$1,339,030 01/02/13 - 01/01/14

Saginaw, County of

Saginaw County Community Survey

DANIEL JAMES KRUGER (Hlth Behavior & Hlth Ed Dept)

With SUSAN MORREL-SAMUELS (Hlth Behavior & Hlth Ed Dept)

\$15,000 10/02/12 - 10/01/13

Scientific Modeling

Segmenting Hyperspectral Scenes with Occlusions

SELIM ESEDOGLU (LSA Mathematics)

\$22,404 12/07/12 - 02/01/13

Seeds

Recharge: Child Restraint Testing

LAWRENCE W SCHNEIDER (UMTRI-Biosciences)

\$5,600 03/02/11 - 02/29/16

Shell Global Solutions International BV

Investigating the Kinetics of Asphaltene Precipitation from Selected Crude Oils

H SCOTT FOGLER (Chemical Engineering Dept)

\$404,144 01/02/12 - 01/01/17

Sloan, Alfred P., Foundation

The National Clearinghouse on Academic Worklife Stage 2: Increasing Content and Impact

GLORIA D THOMAS (Ctr for the Education of Women)

\$15,000 01/02/13 - 01/01/14

Smithsonian Institution

Modeling Quasars in the Young Universe
MARTA VOLONTERI (LSA Astronomy)
\$68,000 01/02/13 - 08/01/14

Soils & Materials Engineers, Inc.

TOPR No. 21 Smoothness Criteria for Hot Mix
Asphalt (HMA) Pavements
TIMOTHY J GORDON (UMTRI-
Engineering Research)
\$50,000 12/02/12 - 04/16/13

Stapp, John Paul, Association

2009 Stapp Car Crash Journal and Conference
LAWRENCE W SCHNEIDER (UMTRI-
Biosciences)
\$113,878 01/02/13 - 01/01/14

Synvasive Technology, Inc

Evaluation of a Novel Unicompartiment
Hemiarthroplasty
STEVEN A GOLDSTEIN (Orthopaedic
Surgery)
\$12,163 06/17/12 - 06/16/13

TetraLogic Pharmaceuticals

Assessing the Cardioprotective Effects of
Necrostatins
BENEDICT R LUCCHESI
(Pharmacology Department)
\$74,488 12/02/12 - 05/01/13

Teva Neuroscience

Immune-Glial/Neuronal Interactions and
Neurodegeneration: Implications for Autoimmune
Diseases of the Central Nervous System
BENJAMIN M SEGAL (Neurology
Department)
\$68,965 03/02/13 - 09/01/13

Texas Southern University

Generation of PPAR-alpha floxed mice
YUQING EUGENE CHEN (Int Med-
Cardiology)
\$20,000 08/02/12 - 04/02/13

Texas, State of

Project IDEAL State Membership: Texas
JEROME JOHNSTON (RCGD-
Communication/Education)
\$31,500 10/02/12 - 10/01/13

The Tobin Project

Democracy of Credit: Economic Citizenship in
U.S. Society, 1970-2008
GRETA R KRIPPNER (LSA Sociology)
\$10,000 01/02/13 - 01/01/14

**Therapeutics System Research Lab, Inc.
(TSRL, Inc.)**

Bile Acid Conjugates for Improving the Oral
Bioavailability of Bisphosphonates
STEVEN A GOLDSTEIN (Orthopaedic
Surgery)
\$43,446 05/02/12 - 05/01/13

UES, Inc.

STTR II: Metal Oxide Nanopowders for the
Production of Transparent Windows
RICHARD M LAINE (Materials Science
& Engin.)
\$225,000 12/24/12 - 11/01/14

United Way of Genesee and Lapeer Counties
Keep Genesee County Beautiful Mapping
Agreement

JONATHAN H JAROSZ (Flint
Ctr/Environmental Rsch)
\$1,000 01/06/13 - 03/01/13

University of California - San Francisco

Bring Simple Urge Incontinence Diagnosis and
Treatment to Providers (BRIDGES)
JANIS MIRIAM MILLER (School of
Nursing)
\$175,873 12/19/12 - 03/01/15

University of California - Santa Barbara

Conceptual Design of the Water and
Environmental Research Systems Network
ANNA MARTA MICHALAK (Civil &
Environmental Engr)
\$9,446 10/02/12 - 01/01/14

University of Kentucky

High-Activity of Cocaine Esterase for Drug
Addiction
JAMES WOODS (Pharmacology
Department)
With ROGER SUNAHARA
(Pharmacology Department); JOHN
TESMER (Pharmacology
Department)\$121,375 08/16/12 -
07/01/13

University of North Carolina

Complex Patient Care Analysis

SANDEEP VIJAN (Int Med-General
Medicine)

\$40,010 10/01/12 - 09/30/13

University of PittsburghAdministrative Supplement for CTSA Consortium
ProjectDANIEL J CLAUW (Mich Inst for Clin &
Hlth Resr)With BRIAN D ATHEY (Psychiatry-
ASAP); SURESH K BHAVNANI
(Computational Medicine and Bio)
\$75,000 09/16/12 - 07/01/13**University of Queensland**Australian Research Council, Linkage- Projects
Scheme 2008 collaborative Research AgreementTAMMY BETTINA CORNWELL
(Division of Kinesiology)

\$1 11/13/12 - 04/01/14

University Research AssociationMaximizing the Scientific Return of the Tevatron
ColliderDANTE ERIC AMIDEI (LSA Physics)
\$20,000 09/02/12 - 01/01/13**Vanderbilt University**UMCC 2007.126 A Feasibility Study
Investigating Translational Science in
Chemotherapy-Naive Patients with Stage IIIb or
IV Non-Small Cell Lung Cancer (NSCLC)

Treated with the EGFR-TKI, Erlotinib

DAVID N REISMAN (Int Med-
Hematology/Oncology)

\$144,000 12/18/12 - 01/01/17

Various Sponsors

Recharge: Clinical Research Assays

DANIEL S MCCONNELL (Epidemiology
Department)

\$25,127 07/02/12 - 07/01/13

Vital Therapies, Inc. (VTI)Safety and Efficacy of the Extracorporeal Liver
Assist Device (ELAD) in Patients with Acute on
Chronic Hepatitis (AOCH)LENA M NAPOLITANO (General
Surgery Section)With PAULINE K PARK (General
Surgery Section); SHAWN J
PELLETIER (General Surgery
Section)

\$107,500 12/19/12 - 12/01/13

Washington UniversityPharmacomechanical Catheter-directed
Thrombolysis for Acute DVT -(ATTRACT) Trial
VA

VENKATARAMU N

KRISHNAMURTHY (Radiology
Department)With WILLIAM E BARRIE (Internal
Medicine Department); JONATHAN
L ELIASON (Vascular Surgery
Section); PETER K HENKE (Vascular
Surgery Section); JOHN E
RECTENWALD (Vascular Surgery
Section)

\$1,500 06/10/12 - 04/01/13

Washtenaw Health Plan Corporation

Strengthening the County Safety Net

EMILY K MEULEMAN (SON-
Community Family Hlth Ctr)

\$70,000 10/02/12 - 10/01/13