

AWARDS ESTABLISHED
Research and Other Sponsored Activities
July 1, 2011 through December 31, 2011

Received by the Regents
January 19, 2012

The awards detailed in this list were established July 1, 2011 through December 31, 2011. The dollar values depict the best available estimate of the funding the University should receive over the life of the award. These values may be modified as additional data become available relative to future funding prospects. These modifications are not reported in the attached list. As a result, the dollar values of awards presented in this list will differ from the year-end totals. The full amount of an award is recorded in the year in which it was established. Often these funds are expended over several years, making comparisons between awards and expenditures somewhat misleading. Research expenditures are presented here to provide a trend line for the current fiscal year.

	Number of Awards FY 2011	Number of Awards FY 2012	% Change	Value of Awards FY 2011	Value of Awards FY 2012	% Change
Total Awards Processed (December)	185	192	3.8%	\$ 44,323,595	\$ 53,862,770	21.5%
Research Awards	121	115	-5.0%	\$33,898,048	\$ 48,392,540	42.8%
Research Training	3	14	366.7%	\$204,883	\$ 1,034,946	405.1%
Other Sponsored Activity	61	63	3.3%	\$ 10,220,664	\$ 4,435,284	-56.6%
<hr/>						
Total Awards Processed Fiscal Year to Date	1,582	1,547	-2.2%	\$ 651,304,907	\$ 598,350,960	-8.1%
Research Awards	1,137	1,074	-5.5%	\$ 545,618,010	\$ 540,182,338	-1.0%
Research Training	90	89	-1.1%	\$ 40,561,705	\$ 17,128,261	-57.8%
Other Sponsored Activity	355	384	8.2%	\$ 65,125,192	\$ 41,040,361	-37.0%

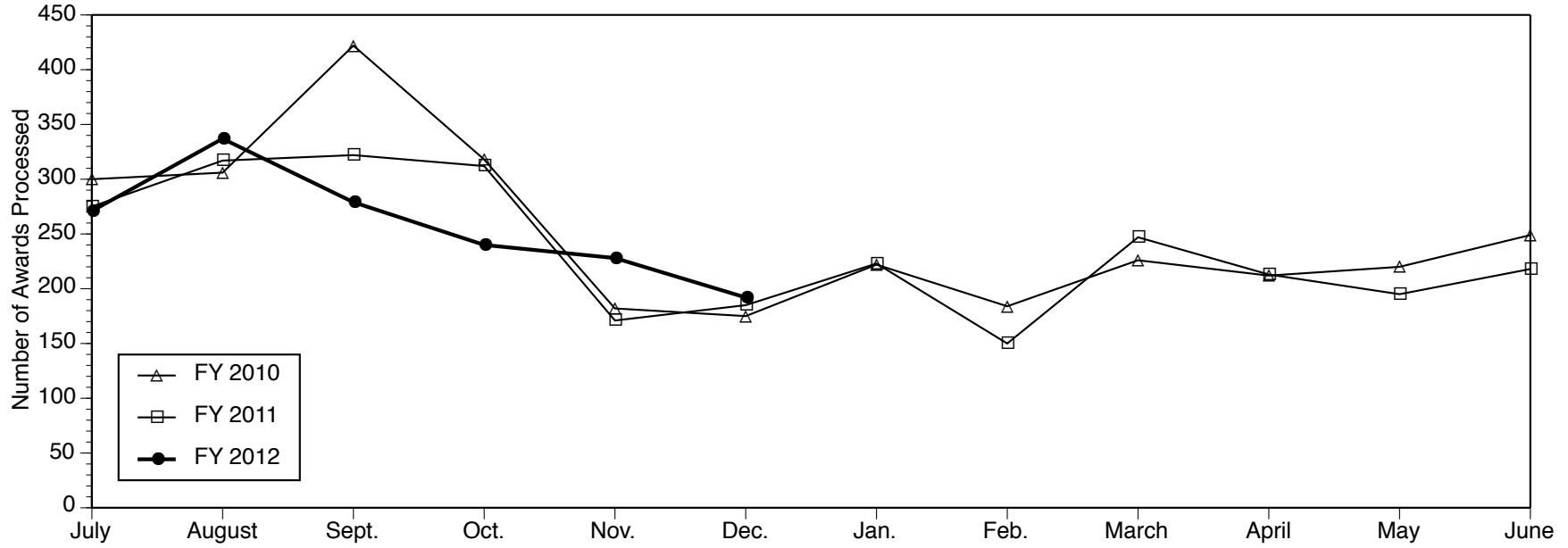
Examination of the award graph reveals the number of total awards processed continues a downward slope since August. The numbers are higher for the previous two fiscal years for the months of August, November, and December. The dollar values of total awards processed are higher than the previous two fiscal years for the same months of August, November, and December. This trend in dollar values represents a fairly consistent pattern in previous fiscal years.

----- RESEARCH EXPENDITURES -----

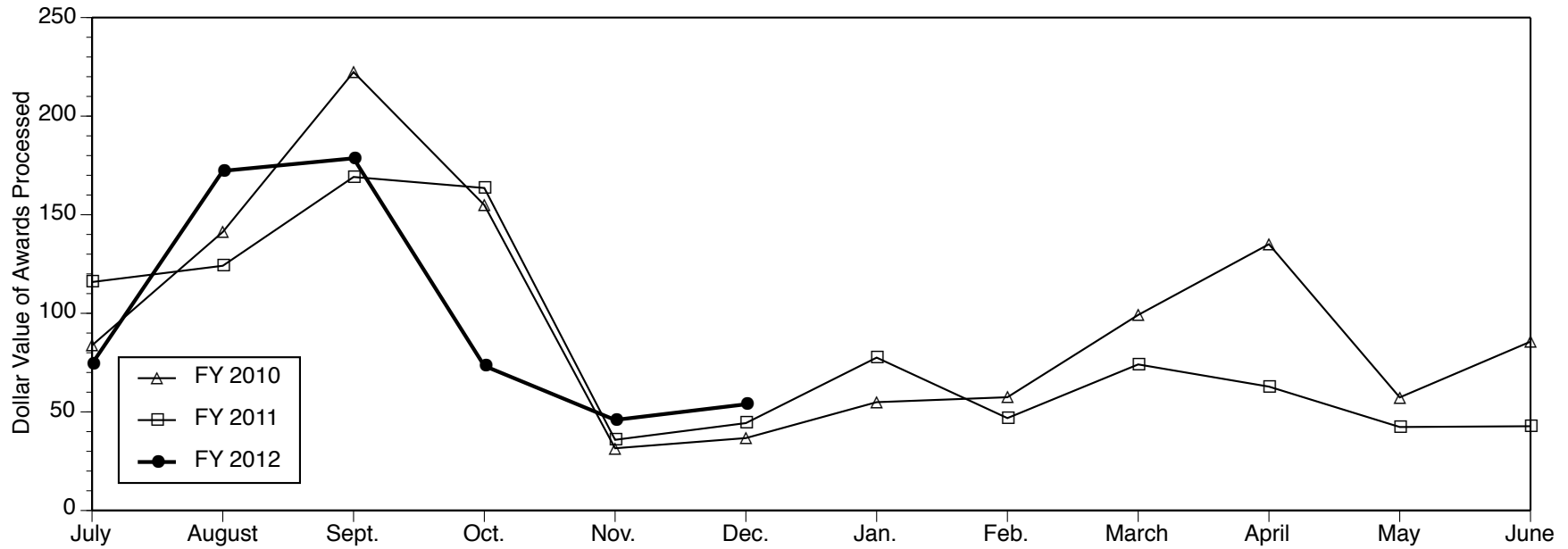
	Federal Expendable Restricted	Other Funds	Total Expenditures
November 2011	\$ 332,908,369	\$ 184,513,790	\$ 517,422,159
November 2010	\$ 339,197,865	\$ 161,774,664	\$ 500,972,529
Percent Change	-1.9%	14.1%	3.3%

Source: Division of Research Development and Administration

Number of Awards Processed



Dollar Value of Awards Processed



Data Source: Division of Research Development and Administration

AWARDS ESTABLISHED FOR RESEARCH AND OTHER SPONSORED ACTIVITIES

December 01, 2011 through December 31, 2011

The awards listed here by direct sponsor were established during the month designated in the heading above. For each award, the listing includes the award title, the principal investigator(s), the proposal administrative department, participating investigators with specified effort, the estimated amount awarded for the award period, and the estimated award period.

3M (Minnesota Mining and Manufacturing Company)

Innovation Strategy - Year 2 award

HART E POSEN (ROSS SCH Research Support)

\$15,000 12/01/2011 - 11/30/2012

Product and Innovation Management - Year 2 award

SRINIVASARAGHAVAN SRIRAM (ROSS SCH Research Support)

\$15,000 10/21/2011 - 11/30/2012

Abbott Laboratories

A Randomized, Open Label, Multi-center Study to Evaluate the Antiviral Activity, Safety, and Pharmacokinetics, of ABT-450 with Ritonavir (ABT-450/r) in combination with ABT-267 and/or ABT-333 With and Without Ribavirin (RBV) for 8, 12 or 24 weeks in Treatment-Naive and Null Responder Subjects with Genotype 1 Chronic Hepatitis C Virus Infection

ANNA SUK-FONG LOK (Int Med-Gastroenterology)

\$109,090 11/25/2011 - 11/24/2012

Albert Einstein College of Medicine

A Pilot of Positively Smoke Free on the Web (PSFW) for HIV-infected Smokers.

LAWRENCE C AN (Int Med-General Medicine)

\$45,717 09/27/2011 - 08/31/2012

Alere, LLC

Alere, Center for Health Intelligence Health Risk Appraisals Economic Reports

DEE W EDINGTON (Health Management Research Ctr)

\$90,000 01/01/2012 - 12/31/2014

American Councils for International Education (ACTR-ACCELS)

Language Learning Strategies and Student Motivation in the Arabic Classroom

RAJI M RAMMUNY (LSA Near Eastern Studies)

\$15,000 09/01/2010 - 08/31/2011

American Customer Satisfaction Index (ACSI), LLC

American Customer Satisfaction Index Research

CLAES FORNELL (ROSS SCH Research Support)

\$117,455 12/01/2011 - 06/30/2012

American Heart Association, Inc.

Therapeutic ultrasound (histotripsy) for noninvasive cardiac applications

GABE E OWENS (Pediatrics-Cardiology)

with ZHEN XU

\$150,000 01/01/2012 - 12/31/2013

American Heart Association, Midwest Affiliate

Genetic Modification of AS160 to Identify the Mechanism for Insulin Resistance in Single Muscle Fibers from Obese Rats

GREGORY DEAN CARTEE (School of Kinesiology)

\$52,000 01/01/2012 - 12/31/2013

Modulation of the echo-enzyme CD39 by statin-driven post-translational modifications and microdomain changes

DAVID PINSKY (Int Med-Cardiology)

\$52,000 01/01/2012 - 12/31/2013

Structural investigations into the lectin-binding chaperone calnexin

MALINI RAGHAVAN (Microbiology and Immunology)

\$95,224 01/01/2012 - 12/31/2013

Direct and Indirect PKC Modulation of Contractile Function and Myofilament Targets

MARGARET V WESTFALL (Cardiac Surgery Section)

\$52,000 01/01/2012 - 12/31/2013

RasGAP Regulation of Cardiovascular and Lymphatic Systems

PHILIP D KING (Microbiology and Immunology)

\$52,000 01/01/2012 - 12/31/2013

Cardiac Reprogramming in Situ: Using an instructive biomaterial to transdifferentiate cardiac fibroblasts to cardiomyocytes

ANDREW JAMES PUTNAM (Biomedical Engineering)

\$90,772 01/01/2012 - 12/31/2013

Regulation of Skeletal Muscle Energy Metabolism by BAF60c

JIANDIE LIN (Life Sciences Institute-Admin)

\$95,224 01/01/2012 - 12/31/2013

Study of Chromosome Strand Segregation in Stem Cells

YUKIKO YAMASHITA (Life Sciences Institute-Admin)

\$52,000 01/01/2012 - 12/31/2013

Myeloid Mineralocorticoid Receptor During Neuroinflammation and Stroke

RICHARD M MORTENSEN (Molec & Integrative Physiology)

\$52,000 01/01/2012 - 12/31/2013

Direct transcriptional repression mediated by Wnt/?-catenin signaling

KENNETH M CADIGAN (LSA Molec./Cell./Develop. Bio)

\$52,000 01/01/2012 - 12/31/2013

American Indian Health and Family Services of SE Michigan, Inc (AIHFS)

?Manidookewigashkibjigan-Sacred Bundle: RESPECT Project?

SANDRA LEE MOMPER (School of Social Work)

\$52,787 08/01/2011 - 07/31/2012

American Shoulder and Elbow Surgeons

A Comparison Between the Contractile and Morphological Properties of Rotator Cuff Muscles of Patients with Mild or Severe Fatty Atrophy

ASHEESH BEDI (Orthopaedic Surgery)

with CHRISTOPHER LOUIS MENDIAS

\$20,000 01/01/2012 - 12/31/2012

Amgen, Inc.

2011.010: A Randomized, Double-Blind, Placebo-Controlled, Multi-Center Phase 3 Study of Denosumab as Adjuvant Treatment for Women with Early-Stage Breast Cancer at High Risk of Recurrence (D-CARE)

CATHERINE H VAN POZNAK (Int Med-Hematology/Oncology)

\$469,572 11/29/2011 - 04/26/2021

Value Based Insurance Design Symposium

DEAN G SMITH (Health Management and Policy)

\$10,000 11/01/2011 - 12/31/2011

AO Foundation

Delivery of Progenitor Cells in Biomaterial Microenvironments to Promote Large Bone Defect Healing

JAN PHILIP STEGEMANN (Biomedical Engineering)

with ANDREA ALFORD

\$266,794 01/01/2012 - 12/31/2013

Arkansas, State of

Arkansas Universal Assessment Project: Mental Health

BRANT E FRIES (Institute of Gerontology)

\$232,418 12/16/2011 - 06/30/2012

ArvinMeritor, Inc.

HIL System Design and Operation

TIMOTHY J GORDON (Mechanical Engineering)

\$5,002 09/12/2011 - 09/20/2011

Astellas Pharma US, Inc.

A Randomized, Double-Blind, Phase II, Efficacy and Safety Study of MDV3100 (ASP9785) vs. Bicalutamide in Castrate Men with Metastatic Prostate Cancer

MAHA HUSSAIN (Int Med-Hematology/Oncology)

\$219,604 12/02/2011 - 12/01/2013

Aurora Health Systems

Aurora Health Care health risk appraisals

DEE W EDINGTON (Health Management Research Ctr)

\$105,000 01/01/2012 - 12/31/2014

Battelle Energy Alliance, LLC

Transient Safety Analysis of Fast Spectrum TRU Burning LWRs with Internal Blankets

THOMAS J DOWNAR (Nuclear Eng & Radiological Sci)

\$599,475 10/11/2011 - 09/30/2014

Baylor College of Medicine

Integrative Metabolomics of Prostate Cancer Progression

THEKKELNAYCKE RAJENDIRAN (Ctr fr Translational Pathology)

with JAEMAN BYUN

SUBRAMANIAM PENNATHUR

\$68,420 09/06/2011 - 01/31/2012

Blaze Medical Devices, LLC

Preliminary characterization of graded red cell lysis and fragility profiling

DAVID P BALLOU (Biological Chemistry Dept)

\$1,288 06/02/2011 - 12/02/2011

Boston Scientific Corporation

Multisensor Chronic Evaluations in Ambulatory Heart Failure Patient (MultiSENSE)

AMAN CHUGH (Int Med-Cardiology)

\$4,800 08/01/2010 - 07/31/2011

Breast Cancer Research Foundation, The

Concurrent PARP Inhibition (Veliparib) and Radiation Therapy to the Chest Wall for Inflammatory and Locoregionally Recurrent Breast Cancer

LORI J PIERCE (Radiation Oncology - Ann Arbor)

with CELINA G KLEER

FELIX Y FENG

\$225,000 10/01/2011 - 09/30/2012

Brigham and Women's Hospital

Risk Evaluation and Education for Alzheimer's Disease

SCOTT ROBERTS (Hlth Behavior & Hlth Ed Dept)

\$100,391 07/01/2011 - 06/30/2012

Impact of Direct-to-Consumer Genetic Testing

SCOTT ROBERTS (Hlth Behavior & Hlth Ed Dept)

with MICK P COUPER

\$153,561 07/01/2011 - 06/30/2012

Bristol-Myers Squibb Company

A Randomized, Double-blind, Multi center Phase III Study of Brivanib versus Sorafenib as First-line Treatment in Patients with Advanced Hepatocellular Carcinoma: The BRISK FL Study BMS Study No. CA182-033-025

JORGE A MARRERO (Int Med-Gastroenterology)

\$282,930 09/01/2011 - 02/07/2013

California Institute of Technology

Support of the Advanced LIGO Upgrade

KEITH RILES (LSA Physics)

with HEROLD R GUSTAFSON

\$109,333 11/01/2011 - 10/31/2013

California Institute of Technology

KATHERINE FREESE (LSA Physics)

\$45,700 01/01/2012 - 05/31/2012

Carolus Therapeutics, Inc

The role of inflammatory targets in allergic lung inflammation and airway hyperreactivity

NICHOLAS W LUKACS (Pathology Department)

\$21,770 12/20/2010 - 11/30/2012

Casey, Annie E., Foundation

The Great Recession and Child Health and Behavior

SHELDON H DANZIGER (FSPP Pov Rsch Center)

\$10,000 09/01/2011 - 12/31/2011

Catholic Social Services

COBO Substance Abuse Prevention (2011 - 2013)

DARLENE KNAPP RACZ (UMH Geri Ctr SW Non-Prgm Proj)

\$13,168 10/01/2011 - 09/30/2012

Centocor, Inc.

Steroid Resistance Proposal: Chronic Fungal Asthma

CORY M HOGABOAM (Pathology Department)

\$118,070 08/01/2010 - 12/30/2012

CFD Research Corporation

Highly Scalable Computational-Based Engineering Algorithms for Emerging Parallel Machine Architectures

KEN POWELL (Aerospace Engineering)

\$30,000 09/30/2011 - 06/30/2012

Charles Stark Draper Laboratory, Inc.

OPTRODE for Quantitative Prediction of Neural Interface Failure

DARYL R KIPKE (Biomedical Engineering)

\$75,414 09/19/2011 - 06/19/2012

Children's Hospital of Los Angeles

Translating an Adult Ventilator Computer Protocol to Pediatric Critical Care

THOMAS PATRICK SHANLEY (Pediatrics-Intensive Care)

\$13,500 03/05/2011 - 02/29/2012

Colgate-Palmolive Company

Evaluation of a Digital Impression System for Measurement of Tooth Abrasion and Erosion

DENNIS J FASBINDER (DENTCariology, Restor Sci & Endo)

\$24,000 10/01/2011 - 09/30/2012

Examination of Factor(s) in Periodontal Health and Disease

ALEXANDER RICKARD (Epidemiology Department)

\$100,000 11/07/2011 - 11/06/2012

Columbia University

Biosignatures of Treatment Response in Major Depression - Supplement

MELVIN G MCINNIS (Psychiatry Depression Center)

\$98,189 07/01/2011 - 06/30/2012

Acupuncture for Aromatase Inhibitor-Related Arthralgias in Breast Cancer Patients

LAURENCE H BAKER (Int Med-Hem/Oncology and SWOG)

\$201,600 09/01/2011 - 06/30/2012

Commerce, Department of-National Oceanic and Atmospheric Administration

Kyle Molton_MI_Knauss Fellowship 2012

JAMES STEPHEN DIANA (SNRE Michigan Sea Grant)

\$49,000 02/01/2012 - 01/31/2013

CSquared Innovations, LLC

STTR: Solid State Thin-Film Batteries for Conformal, Ultralight, and High Temp Applications

BEN Q LI (Dbn Coll of Eng-Mechanical Eng)

\$32,000 09/01/2011 - 11/15/2011

Dairy Research Institute (DRI)

US Fluid Milk beyond Carbon LCA Study

OLIVIER J JOLLIET (Environmental Health Sciences)

\$20,000 12/31/2011 - 10/31/2013

Defense, Department of-Army, Department of the

Biomimetic Delivery of Biomolecules for Craniofacial Bone Regeneration

PETER X MA (DENT Bio & Materials Science)

with LAURIE KAY MCCAULEY

\$1,858,058 12/15/2011 - 01/14/2016

Delphi Corporation

Delphi Mexico web HRA set-up and useage, supplement

DEE W EDINGTON (Health Management Research Ctr)

\$3,215 08/01/2011 - 12/31/2011

Delta Marine Industries, Inc

Delta Marine 130-foot motor yacht hydrodynamic test

STEVEN FRANCIS ZALEK (Naval Arch & Marine Dept)

\$23,300 12/01/2011 - 12/31/2011

Dentsply International, Inc.

Compomer Restoration in Caries-Prone Populations - an RCT (Short Title: Compomer-RCT)

MATHILDE C PETERS (DENTCariology,Restor Sci &Endo)

\$12,350 07/01/2010 - 12/21/2011

Duke University

Scleroderma: Cyclophosphamide or Transplantation Study (SCOT) A Randomized, Open-Label, Phase II Multi-Center Study of High-Dose Immunosuppressive Therapy Using Total Body Irradiation, Cyclophosphamide, ATGAM, and Autologous Transplantation with Auto-CD34+HPC versus Intravenous Pulse Cyclophosphamide for the Treatment of Severe Systemic Sclerosis (Protocol # SCSSc-01)

KRISTINE PHILLIPS (Int Med-Rheumatology)

\$587,348 08/01/2011 - 10/31/2012

Econometrica

Medicaid Incentives for Prevention of Chronic Diseases (MIPCD)

NOREEN M CLARK (Hlth Behavior & Hlth Ed Dept)

with LAURIE L LACHANCE

\$95,450 09/27/2011 - 09/26/2012

Educational Development Center, Inc.

More than a Dream/Mas que un sueno for Latino Youth

ANTONIA M VILLARRUEL (SON-Grants)

\$51,033 09/01/2011 - 09/30/2011

Educational Testing Service

Classroom Observaton Rater Study

BRIAN P ROWAN (Education and Well Being)

\$6,000 09/01/2011 - 08/01/2012

Electric Power Research Institute

Magnetic Field Exposure in a Cohort of Women in Assisted Reproductive Program: Pilot Study

JOHN D MEEKER (Environmental Health Sciences)

\$117,636 11/01/2011 - 12/31/2012

Energy, Department of

Robust, Reliable, Low Emission Gas Turbine Combustion of High Hydrogen Content Fuels

MARGARET S WOOLDRIDGE (Mechanical Engineering)

with HONG G IM

\$499,998 10/01/2011 - 09/30/2014

ev3 Endovascular, Inc

Endothelial Cellular Attachment, Proliferation, and Differentiation on Platinum Based Coils

ADITYA S PANDEY (Neurosurgery)

\$47,819 01/02/2012 - 01/01/2013

Fermi National Accelerator Laboratory

MIPP Analysis Extended until 9/30/2011

MICHAEL J LONGO (LSA Physics)

\$30,669 05/01/2011 - 09/30/2011

D? Experiment Supplemental Funding 2011/2012

JIANMING QIAN (LSA Physics)

\$26,000 08/01/2011 - 07/31/2012

Fibrotech Therapeutics

Molecular Pathways Targeted by Antifibrotic Therapies in Rat Models of Diabetic Nephropathy

MATTHIAS KRETZLER (Int Med-Nephrology)

\$136,561 01/01/2012 - 12/31/2012

Ford Motor Company

Advanced Machining Research

ALBERT J SHIH (Mechanical Engineering)

\$25,500 12/02/2011 - 06/30/2012

GE Healthcare

GE - Pre-clinical Imaging

PETER J SCOTT (Department of Radiology)

\$43,030 01/02/2012 - 11/30/2012

General Electric Association of University Radiologists (GE-AUR)

Patient and Physician Centered Radiology

JADRANKA STOJANOVSKA NOJKOVA (Department of Radiology)

\$140,000 07/01/2011 - 06/30/2013

General Motors Company

Potential Effects of Low-Mass Vehicles with Ideal Crash Avoidance Technology Phase II: Analysis of Shanghai Crashes and Development of Software Tool

KATHLEEN DESANTIS KLINICH (UMTRI-Biosciences)

with CAROL ANN FLANNAGAN

JINGWEN HU

MATTHEW PAUL REED

\$138,999 11/01/2011 - 09/30/2012

Modelin and Analysis of Laser Welding of Stainless Steel for Fuel Cells

ELIJAH KANNATEY-ASIBU JR (Mechanical Engineering)

\$8,507 11/01/2011 - 01/31/2012

Gilead Sciences, Inc.

Open-Label Phase 2 Trial to Evaluate the Safety and Efficacy of Aztreonam 75 mg Powder and Solvent for Nebuliser Solution/Aztreonam for Inhalation Solution (AZLI) in Pediatric Patients with Cystic Fibrosis (CF) and New Onset Lower Respiratory Tract Culture Positive for Pseudomonas aeruginosa (PA) Aztreonam Lysine for Pseudomonas Infection Eradication (ALPINE) Study

SAMYA Z NASR (Pediatrics-Pulmonary Medicine)

with FAUZIYA HASSAN

\$39,960 07/20/2011 - 09/14/2012

Antiarrhythmic Efficacy of Ranolazine in Atrial Fibrillation

SANDEEP VINAYAK PANDIT (Int Med-Cardiology)

with HASSAN MUSA

JOSE JALIFE

\$248,800 12/21/2011 - 12/20/2012

Great Lakes Observing System (GLOS)

Teaching with Great Lakes Data - Great Lakes Observing System

JAMES STEPHEN DIANA (SNRE Michigan Sea Grant)

\$30,000 06/01/2011 - 05/31/2012

Harvard University

Genetic Markers of CHD in Type 2 Diabetes

ANA BAYLIN (Epidemiology Department)

\$90,639 03/01/2011 - 02/29/2012

Health and Human Services, Department of National Institutes of Health

Population Research Infrastructure Support

PAMELA J SMOCK (Pop Studies-Research)

with DAVID A LAM

JAMES M LEPKOWSKI

YU XIE

\$4,798,006 12/22/2011 - 11/30/2016

Skeletal Muscle Glucose Transport: Exercise and Insulin

GREGORY DEAN CARTEE (School of Kinesiology)

\$1,404,367 12/12/2011 - 11/30/2015

Structural and Functional Studies of Galphaq and Its Signaling Complexes

JOHN J G TESMER (Life Sciences Institute-Admin)

with TOMASZ CIERPICKI

\$1,640,824 12/15/2011 - 11/30/2015

Identification of the gene and protein product responsible for Golgi casein kinase activity

JAMES P SIMMER (DENT Bio & Materials Science)

\$95,200 12/01/2011 - 11/30/2013

Integrating cells into the auditory epithelium of deaf ears

YEHOASH RAPHAEL (Kresge Hearing Research Inst)

with ROBERT K DUNCAN

\$427,625 12/07/2011 - 11/30/2013

HIV Infection of Hematopoietic Progenitor Cells

KATHLEEN L COLLINS (Int Med-Infectious Diseases)

with DALE LEE BIXBY

JAMES RIDDELL IV

STEVEN R KING

\$2,994,277 12/01/2011 - 11/30/2016

Effects of the Built Environment, Crime and Food Prices on BMI, Activity and Eating.

NATALIE COLABIANCHI (SRC-Studies of Youth)

\$280,709 12/01/2011 - 11/30/2012

Characterization of mechanosensitive channels in a genetic model

X Z SHAWN XU (Life Sciences Institute-Admin)

\$96,138 01/01/2012 - 12/31/2014

Integrated Analysis of High Throughput Cancer Genomic Data

YI LI (Biostatistics Department)

with JI ZHU

\$341,594 12/15/2011 - 07/31/2013

Genetic Determination of Skeletal Fragility

KARL JOHN JEPSEN (Orthopaedic Surgery)

\$1,788,265 09/15/2011 - 06/30/2015

Hemophilia Foundation of Michigan

2011-2012 Centers for Disease Control and Prevention (CDC) Grant Award

STEVEN W PIPE (Pediatrics-Hematology/Oncology)

\$30,000 09/30/2011 - 09/29/2012

Industria de Turbopropulsores S.A.

Ultrasonic Fatigue Testing of Single Crystal Nickel-base Superalloys at Elevated Temperatures

J WAYNE JONES (Materials Science & Engin.)

\$16,000 03/01/2011 - 09/30/2011

Institut fur Arbeitsmarkt-und Berufsforschung (IAB)

German Federal Employment Agency Agreement

MARGARET C LEVENSTEIN (SRC-Hrs)

\$120,000 12/23/2011 - 12/22/2013

Insurance Institute for Highway Safety

LATCH Vehicle Anchorage Usability Survey - additional Phase III

KATHLEEN DESANTIS KLINICH (UMTRI-Biosciences)

with CAROL ANN FLANNAGAN

\$20,100 04/15/2010 - 06/30/2012

Intel Corporation

Security curriculum innovations:

Wireless networking and network system security

ZHUOQING MAO (COE EECS - CSE - SSRL)

\$37,500 11/14/2011 - 11/13/2021

International Centre for Research in Agroforestry (ICRAF)

Livelihoods, Carbon, and the Governance of the Forest-Agriculture Frontier

ARUN AGRAWAL (Sch of Nat Resources & Environ)

\$162,306 12/15/2011 - 12/14/2013

Jaeb Center for Health Research

Pediatrics Diabetes Consortium

JOYCE M LEE (Pediatrics-Ambulatory Care Pgm)

\$43,200 09/01/2011 - 08/31/2013

Jet Propulsion Laboratory

Atmospheric Composition and Hazes in Saturn's Ring-Shadowed North as Revealed by Cassini

SUSHIL K ATREYA (Atm, Oceanic & Space Sci.)

\$46,200 12/01/2011 - 03/25/2012

Johns Hopkins University

Genome-Wide Association Analysis in Essential Hypertension

SHARON REILLY KARDIA (Epidemiology Department)

with SANTHI K GANESH

\$100,000 08/05/2011 - 05/30/2012

Cardiovascular Surgical Translation Study (CSTS) Collaborative / Cardiac Surgery Outcomes: Comparing the Comprehensive Unit-Based Safety Program (CUSP) and Translating Evidence into Practice (TRiP) to Passive Reporting Collaborative.

WEI CHUNG LAU (Anesthesiology Department)

\$4,800 07/01/2011 - 08/31/2013

Juvenile Diabetes Research Foundation International (JDRF)

Studying the link between type-1 diabetes and cardiac arrhythmias

EVA L FELDMAN (Neurology Department)

\$149,388 11/01/2011 - 10/31/2014

JV Biolabs

PROPOSAL TO EVALUATE EIGHT COMPOUNDS FOR ACTIVITY AGAINST-EGF-STIMULATED EPIDERMAL HYPERPLASIA: ORGAN CULTURE STUDIES: ammendment to add three additional compounds

NARASIMHARAO V BHAGAVATHULA (Pathology Department)

with MICHAEL K DAME

\$34,030 08/05/2010 - 12/31/2012

Lawrence Livermore National Security, LLC

Concept Development for Astrophysically Relevant Turbulence on NIF

R PAUL DRAKE (Atm, Oceanic & Space Sci.)

\$70,000 12/07/2011 - 09/01/2012

Leukemia and Lymphoma Society

Development of new anti-leukemia drugs targeting the menin-MLL interaction.

JOLANTA E GREMBECKA (Pathology Department)

\$17,960 01/01/2012 - 04/30/2012

Lippo Group Co. Ltd.

NSF I/UCRC on Intelligent Maintenance Systems Lippo Group Membership & Enhancement

JUN NI (CoE Ind/Univ Coop Research Ctr)

\$70,000 01/01/2011 - 12/31/2011

Luce, Henry, Foundation

Joint UM - Fudan Dissertation Workshops on Gender Studies

ZHENG WANG (Inst/Research Women & Gender)

\$240,000 11/10/2011 - 11/09/2014

Masco Corporate Foundation

Clean Energy Venture Challenge Masco Sponsorship

THOMAS H ZURBUCHEN (CoE Assoc Dean for Entrep Prog)

\$25,000 11/01/2011 - 06/30/2012

Massachusetts General Hospital

Creatine Safety, Tolerability, & Efficacy in Huntington's Disease

PRAVEEN DAYALU (Neurology Department)

\$3,000 07/01/2011 - 06/30/2012

Medtronic, Inc.

Steering Committee Member for the CoreValve US Pivotal study

G MICHAEL DEEB (Cardiac Surgery Section)

\$25,000 05/01/2011 - 11/27/2014

Merck Childhood Asthma Network (MCAN)

Evaluation of Cost Implications of The Children's Hospital of Philadelphia's Asthma Health Care Navigator (AHCN) Program

NOREEN M CLARK (Hlth Behavior & Hlth Ed Dept)

with DEAN G SMITH

\$61,911 10/01/2011 - 09/30/2014

Michigan Campus Compact

College Coaching Corps AmeriCorps Partnership to Improve Educational Access for Youth in Communities

JOHN C BURKHARDT (SOE-CSHPE)

\$1 08/04/2010 - 05/11/2011

Michigan Campus Compact/Michigan Nonprofit Association

Host Site: College Coaching Corps AmeriCorps Partnership to Improve Educational Access for Youth in Communities - Year 2011

JOHN C BURKHARDT (SOE-CSHPE)

\$1 09/01/2011 - 08/31/2012

Michigan Chapter Buick GS Club of America

Internship with Buick Gallery Research Center

THOMAS C HENTHORN (Flint History)

\$1,000 01/04/2012 - 12/31/2012

Michigan Primary Care Association

Clinical Child & Adolescent Health Center, Michigan Primary Care Association, Regional Alliance for Healthy Schools, Scarlett Middle School

SHARON A REDMER (UMH RAHS Scarlett MiddleSchool)

\$175,000 10/01/2011 - 09/30/2012

Clinical Child & Adolescent Health Center, Michigan Primary Care Association, Regional Alliance for Healthy Schools, Ypsilanti High School, FY 2012

SHARON A REDMER (RAHS - Ypsi High School)

\$175,000 10/01/2011 - 09/30/2012

CAHC MPCA RAHS Ypsi MS FY12-Continuation of Funding

SHARON A REDMER (UMH RAHS YpsiEast MiddleSchool)

\$120,000 10/01/2011 - 09/30/2012

CAHC-MPCA RAHS Willow Run-FY12 Continuation of Funding

SHARON A REDMER (UMH RAHS - Willow Run)

\$175,000 10/01/2011 - 09/30/2012

Michigan Public Health Institute

Evaluation of the Juvenile Justice Prevention Programs for the Michigan Department of Human Services 2011

ROSEMARY A SARRI (CPS-Research)

\$10,000 10/01/2011 - 08/11/2012

Michigan State Bar Foundation

Michigan Poverty Law Program 2011

ANNE N SCHROTH (Law Clinical Activity)

\$150,000 01/01/2011 - 12/31/2011

Michigan, State of, Community Health, Department of

University of Michigan Breast and Ovarian Cancer Risk and Evaluation Program

SOFIA D MERAJVER (Int Med-Hematology/Oncology)

\$6,000 11/01/2011 - 09/30/2012

Cancer Genomics Best Practices

ELENA M STOFFEL (Int Med-Gastroenterology)

\$6,000 11/01/2011 - 09/30/2012

Michigan, State of, Human Services, Department of

U-Tools - High School Enrichment Program for Foster Youth in Metropolitan Detroit

MESUT DURAN (Dbn School of Education)

with KATHERINE ELIZABETH PAGE SANDER

\$24,998 11/15/2011 - 09/30/2012

Michigan, State of, State Police, Department of

Data Driven Approaches to Crime and Traffic Safety (DDACTS) Teen Seat Belt Use Initiative in Macomb County: Analysis and Evaluation

DAVID W EBY (UMTRI-Behavioral Sciences)

with LIDIA P KOSTYNIUK

\$122,000 11/28/2011 - 09/30/2012

Michigan, State of, Transportation, Department of

Economic and Demographic Forecasts for Michigan and Its Counties

GEORGE A FULTON (IRLEE)

\$361,810 12/06/2011 - 09/30/2013

Millennium Pharmaceuticals, Inc.

An Open-Label, Dose-Escalation, Phase 1/2 Study of the Oral Formulation of MLN9708 Administered Twice-weekly in Combination With Lenalidomide and Dexamethasone in Patients With Newly Diagnosed Multiple Myeloma Requiring Systemic Treatment

MOSHE TALPAZ (CTO-Phase 1)

with DANIEL LEBOVIC

\$811,260 10/27/2011 - 10/26/2013

Mott, Charles Stewart, Foundation

Creating a Learning Environment at the Urban Alternatives House - Eddy Street

RICHARD HILL-ROWLEY (Flint Earth & Resource Science)

\$45,420 07/01/2011 - 06/30/2012

UM-Flint University Outreach Collegiate Entrepreneurship Program: Year 4 Grant

JONATHAN H JAROSZ (Flint University Outreach)

\$65,000 11/01/2011 - 10/31/2012

National Aeronautics and Space Administration

*Mars Organic Molecule Analyzer (MOMA)
Electrical/Electronic Subsystem Development (PR3)*

CHARLES J M EDMONSON JR (Space Physics Research Lab)

\$149,679 12/07/2011 - 03/31/2012

National Endowment for the Humanities

Terrenato - The Gabii Project, Italy - NEH

NICOLA TERRENATO (LSA Kelsey Museum/Archaeology)

\$249,900 01/01/2012 - 12/31/2014

National Marrow Donor Program (NMDP)

CIBMTR Protocol #09 The Role of Minimal Residual Disease Testing before and after Hematopoietic Cell Transplantation for Pediatric Acute Myeloid Leukemia

JOHN E LEVINE (Pediatrics-Hematology/Oncology)

\$8,000 12/09/2011 - 12/08/2013

National Safety Council

Publication of the Child Passenger Safety Tech Update Newsletter

KATHLEEN DESANTIS KLINICH (UMTRI-Biosciences)

\$22,494 11/01/2011 - 09/30/2012

National Science Foundation

NSF proposal

MICHAL R ZOCHOWSKI (LSA Physics)

with LEONARD M SANDER

\$300,000 12/15/2011 - 11/30/2014

Evolving hyperdiversity in phenotypic, ecological, and geographic networks: testing the taxon cycle and alternatives in Indo-Pacific Pheidole

EVAN PHILIP ECONOMO (LSA Ecology & Evolutionary Bio)

\$378,619 02/01/2012 - 01/31/2014

Computational Workshop of F Invariants

WENLIANG ZHANG (LSA Mathematics)

\$10,000 03/01/2012 - 02/28/2013

Conference on Statistical Learning and Data Mining

JI ZHU (LSA Statistics)

\$25,000 01/01/2012 - 12/31/2012

New England Research Institute

TCRN-NMD 0901 A Pilot Trial of Unrelated Donor Hematopoietic Cell Transplantation for Children with Severe Thalassemia Using a Reduced Intensity Conditioning Regimen (The URTN TRIAL)

JOHN E LEVINE (Pediatrics-Hematology/Oncology)

\$8,000 12/01/2011 - 12/31/2012

Novartis Institutes for BioMedical Research, Inc.

Validating MLL and WDR5 as potential therapeutic targets for acute leukemia

YALI DOU (Pathology Department)

\$304,000 11/30/2011 - 11/29/2013

NOVARTIS PHARMA, INC.

A Facilitated access program to provide Everolimus (RAD) for maintenance for patients completing therapy in RAD trials in solid organ transplantation. Study: CRAD001 2401 Amend 1 revised

JEFFREY D PUNCH (Transplant Surgery (STX))

\$123,550 01/01/2006 - 12/31/2013

Ocuscience*Ocusciences Photography Project*

JOHN R HECKENLIVELY (Ophthalmology & Visual Science)

\$4,000 07/01/2011 - 06/30/2012

Ohio State University, The*SWIR Super-Continuum Laser for Full-Spectrum Active Hyper-spectral Imaging*

MOHAMMED NAZRUL ISLAM (COE EECS - ECE - SSEL)

\$193,437 09/01/2011 - 12/31/2012

Performance-driven inference and provisioning in multiple platform ATR radar systems

ALFRED O HERO III (COE EECS - ECE - Cspl)

\$155,523 09/01/2011 - 12/31/2012

Pfizer*Effects of Tigecycline on the Murine Intestinal Microbiome and Experimental Clostridium difficile Infection*

VINCENT BENSAN YOUNG (Int Med-Infectious Diseases)

with CASEY THERIOT

CHRISTINE M BASSIS

\$99,840 11/01/2011 - 11/30/2012

Supplement to Pfizer/University of Michigan Collaborative Research Agreement: Collaboration on Biomarker development for preclinical and clinical studies.

KENT J JOHNSON (Pathology Department)

with ROSCOE L WARNER

\$25,000 12/15/2011 - 12/14/2012

Phrixus Pharmaceuticals, Inc*Poloxamer 188 mechanism of action in ischemic heart failure*

DANIEL EUGENE MICHELE (Molec & Integrative Physiology)

\$108,157 09/01/2011 - 07/31/2012

Pritzker Foundation*Pritzker Neuropsychiatric Disorders Research Consortium III*

HUDA AKIL (Molecular & Behav Neurosc Inst)

STANLEY J WATSON JR (Molecular & Behav Neurosc Inst)

\$17,500,000 01/01/2012 - 12/31/2016

Procter and Gamble Company*"Mathematical Modeling for Improving System Sustainability: From the Classroom Experience to the Real-World Applications"*

SIQIAN MAY SHEN (Industrial & Operations Engin)

\$6,000 01/01/2012 - 12/31/2012

Prostate Cancer Foundation*Molecular dissection of the premetastatic niche in prostate cancer*

YUSUKE SHIOZAWA (DENT Periodontics and Oral Med)

\$225,000 01/01/2012 - 12/31/2014

Proteostasis Therapeutics, Inc*PTI High Throughput Screening Agreement*

JASON EDWARD GESTWICKI (Life Sciences Institute-Admin)

\$62,000 12/15/2011 - 06/14/2012

Raytheon Company

Space Debris Elimination

AARON JAMES RIDLEY (Atm, Oceanic & Space Sci.)

with ERDAL YIGIT

\$37,696 10/17/2011 - 04/15/2012

Rehabilitation Institute of Chicago

RRTC on Improving Measurement of Medical Rehabilitation Outcomes UM YR 2

DAVID TULSKY (Physical Medicine & Rehab Dept)

with NOELLE E CARLOZZI

\$281,638 10/01/2011 - 09/30/2012

Reuters Limited

Surveys of Consumers Data Co-Branding and Distribution, 2012

RICHARD T CURTIN (SRC-Surveys of Consumers)

\$1,000,000 01/01/2012 - 12/31/2012

Reynolds, Christopher, Foundation, The

Christopher Reynolds Foundation - Cuba Project (FY12)

FRANK W THOMPSON (LSA Economics)

\$8,000 11/01/2011 - 10/31/2012

Sarcoma Alliance for Research Through Collaboration (SARC)

A Randomized, Double-Blinded, Placebo-Controlled, Multi-Institutional, Phase II.5 Study of Saracatinib (AZD0530), a Selective Src Kinase Inhibitor, In Patients with Recurrent Osteosarcoma Localized to the Lung

SCOTT M SCHUETZE (Int Med-Hematology/Oncology)

\$63,238 08/06/2010 - 11/04/2014

Schering Corporation

A Multi-center, Randomized, Double-Blind, Placebo-controlled Study to Evaluate the Safety and Efficacy of SCH 530348 in Addition to Standard of Care in Subjects with Acute Coronary Syndrome (TRAC-ER)

STANLEY J CHETCUTI (Int Med-Cardiology)

\$200 07/01/2011 - 07/31/2011

Siemens Medical Solutions USA, Inc

Evaluation of Virtual Touch Tissue Imaging (Acoustic Radiation Force Impulse (ARFI)/Shear Wave Imaging (SWI)) for the Detection Bowel Wall Fibrosis in Fresh Resected Human Small Bowel Crohn Disease Specimens and in an Animal Model

JONATHAN RUSSELL DILLMAN (Department of Radiology)

with RYAN WILLIAM STIDHAM

\$37,684 11/15/2011 - 12/31/2012

Simons Foundation

Dark Matter and Dark Stars in the Universe

KATHERINE FREESE (LSA Physics)

\$120,379 08/01/2012 - 07/31/2013

TRACHETTE L JACKSON (LSA Mathematics)

\$121,163 07/01/2012 - 06/30/2013

SmithBucklin Corp

Mechanical Behavior of Soy-Based Plastics and Rubber- Year 2

ALAN ARGENTO (Dbn Coll of Eng-Mechanical Eng)

with WONSUK KIM

\$73,291 01/01/2012 - 12/31/2012

Space Telescope Science Institute

A Panchromatic Hubble Andromeda and Triangulum Survey

ERIC F BELL (LSA Astronomy)

\$40,264 12/01/2011 - 11/30/2014

Spastic Paraplegia Foundation, Inc.

Natural History of Primary Lateral Sclerosis and Hereditary Spastic Paraplegia: : establishing parameters for clinical trials

JOHN K FINK (Neurology Department)

with KERBY A SHEDDEN

\$120,000 10/01/2011 - 11/01/2013

STATinMED Research (SIMR, Inc)

Examine Treatment Patterns and Utilization Among Post-Menopausal Women using MarketScan and The University of Michigan Women's Registry Database

YOLANDA REGINA SMITH (Obstetrics and Gynecology Dept)

\$40,000 09/12/2011 - 09/11/2012

Target Corporation

SophEx Program

JASON D OWEN-SMITH (LSA OS: Barger Leadership Inst)

\$5,000 01/02/2012 - 05/31/2013

Terumo Heart, Inc

Effectiveness of the DuraHeart? Left Ventricular Assist System in Patients Awaiting Transplantation

FRANCIS D PAGANI (Cardiac Surgery Section)

\$4,134 07/01/2011 - 06/29/2012

Texas A & M University

Identification of African Swine Fever Virus vaccine candidates by reverse vaccinology

YONGQUN HE (Lab Animal Medicine Unit)

\$67,417 10/01/2011 - 09/19/2013

TG Public Benefit

An examination of the relationship between private support, institutional viability and the role of HSIs in providing educational access and opportunity

JOHN C BURKHARDT (SOE-CSHPE)

\$139,188 12/13/2011 - 08/31/2012

Thailand Board of Investment (BOI) Headquarters

Thailand Board of Investments - Matching Foreign Direct Investment

ALLEN D HICKEN (LSA II: SE Asian Studies)

with LINDA Y C LIM

\$43,920 07/15/2011 - 01/31/2012

The Buck Institute for Research on Aging

Huntington's Disease and Neurogenesis

MARIA CASTRO (Neurosurgery)

\$1,947 07/01/2011 - 11/30/2011

Toyota Engineering & Manufacturing North America (TEMA)

Highly mismatched alloys with intermediate band for high efficiency photovoltaic

JAMIE DEAN PHILLIPS (COE EECS - ECE - SSEL)

\$48,681 02/01/2012 - 01/31/2013

TRW, Inc.

Development of Advanced Brake Control Methodology for EV/HEV Applications

TAEHYUN SHIM (Dbn Coll of Eng-Mechanical Eng)

\$48,000 09/01/2011 - 08/31/2021

University of California - Irvine

Adult correlates of middle-childhood skills and behaviors: CAPCA Subcontract

SHARON ZENECA SIMONTON (RCGD-General Research)

\$17,883 09/24/2011 - 05/31/2012

University of California - Lawrence Berkeley National Laboratory

Imaging scattered x-ray radiation for density measurements in hydrodynamics experiments on the National Ignition Facility

CAROLYN CHRISTINE KURANZ (Atm, Oceanic & Space Sci.)

\$70,000 12/07/2011 - 09/01/2012

University of California - San Francisco

Systemic hypotension following PDA ligation: the role of adrenal immaturity

RICHARD AUCHUS (Metabolism, Endo & Diabetes)

\$32,330 07/11/2011 - 06/30/2012

University of California - Santa Barbara

GOAL: Science Underpinning Design of Layered Systems with Dynamically Evolving Structure (SYDES)

ANTON VAN DER VEN (Materials Science & Engin.)

\$430,014 10/01/2011 - 09/30/2015

University of Chicago

Early Therapeutics Development with Phase II Emphasis

MAHA HUSSAIN (Int Med-Hematology/Oncology)

\$57,546 09/23/2011 - 09/22/2012

University of Delaware

Establishment of Outcomes Core within the BADER Consortium

DAVID TULSKY (Physical Medicine & Rehab Dept)

with NOELLE E CARLOZZI

\$742,155 09/30/2011 - 09/29/2016

University of Illinois-Urbana-Champaign

Evaluation of DuPage County's Juvenile Probation Initiatives

JOSEPH P RYAN (School of Social Work)

\$12,580 09/01/2011 - 07/31/2012

University of Nebraska

Transgenic Mice Study 2011-2012

STEVEN W PIPE (Pediatrics-Hematology/Oncology)

\$25,296 12/02/2011 - 11/30/2012

University of Pittsburgh

Project SEED: Support, Education, and Evaluation in Diabetes

GRETCHEN A PIATT (Med Ed/Ofc of Ed Resources&Res)

\$24,943 08/01/2011 - 10/01/2013

University of Southern California

RELIVE Project DCC Subcontract to UM from USC

ROBERT MARK MERION (Transplant Surgery (STX))

with ALAN B LEICHTMAN

BRENDA WILSON GILLESPIE

\$84,250 07/01/2011 - 06/30/2012

University of Texas

Low-rank Approximation to Probe-level Data with Application to Exon Tiling Arrays

XUMING HE (LSA Statistics)

\$82,222 06/01/2011 - 05/31/2012

University of Texas at Austin

Family Exchanges Study II

KIRA S BIRDITT (SRC-Life Course Development)

with ROBERT F SCHOENI

\$288,547 09/01/2011 - 08/31/2016

University of Texas Health Science Center at San Antonio

Robot Assisted versus Open Radical Cystectomy: A Randomized Clinical Trial

ALON ZADOK WEIZER (Urology Surgery)

\$27,990 07/01/2011 - 04/30/2012

University of Utah

Development of Cloud and Precipitation Property Retrieval Algorithms and Measurement Simulators

DEREK J POSSELT (Atm, Oceanic & Space Sci.)

\$50,000 10/27/2011 - 08/14/2012

Contacts Among Utah School-aged Populations

PRABAL DUTTA (COE EECS - CSE - ACAL)

\$75,103 08/31/2011 - 08/30/2012

University of Virginia

Stroke Hyperglycemia Insulin Network Effort (SHINE)

WILLIAM G BARSAN (Emergency Medicine UM Adult)

with LEWIS B MORGENSTERN

\$1,720,229 08/01/2011 - 07/31/2012

University of Washington*Biodiversity Distributed Graduate Seminar*

IVETTE PERFECTO (Sch of Nat Resources & Environ)
with BRADLEY CARDINALE
\$33,095 09/01/2011 - 08/31/2012

University Research Corridor*Michigan Bloodspot Environmental Epidemiology Project (BLEEP)*

HOWARD HU (Environmental Health Sciences)
\$450,000 09/08/2011 - 09/07/2014

Various Sponsors*ME 450 Mechanical Design - Fall 2011*

GORDON G KRAUSS (Mechanical Engineering)
\$15,000 09/01/2011 - 12/31/2011

Veterans Affairs, Department of*IPA Agreement_Sandra Wilcock_FY12*

JOHN K FINK (Neurology Department)
\$82,225 10/01/2011 - 09/30/2012

IPA Agreement Luo, Wei 10/01/11-09/30/12

DANIEL T EITZMAN (Int Med-Cardiology)
\$54,843 10/01/2011 - 09/30/2012

IPA Agreement Guo, Chiao 10/01/11-09/30/12

DANIEL T EITZMAN (Int Med-Cardiology)
\$45,048 10/01/2011 - 09/30/2012

IPA Wang, Hui

DANIEL T EITZMAN (Int Med-Cardiology)
\$58,258 10/01/2011 - 09/30/2012

SCAN-ECHO Provider Recruitment Video

THEODORE ALEXANDER HANSS JR (Michigan MultiMedia (M3))
\$8,500 12/09/2011 - 12/08/2012

Washington University*Sentinel Network Part II: To Advance the Model (WashU)*

THOMAS PATRICK SHANLEY (MICHR - CTSA)
\$58,000 06/01/2011 - 05/31/2012

Wayne, County of*Detroit Center for Family Advocacy - Wayne County Contract*

VIVEK S SANKARAN (Law Clinical Activity)
\$231,480 01/01/2011 - 09/30/2012

Wayne State University*RECHARGE High Throughput Protein Lab, Granneman/Wayne St.*

WILLIAM CLAY BROWN (Life Sciences Institute-Admin)
\$3,838 01/31/2011 - 02/28/2012

Yale University

Assessment of Multiple Intrauterine Gestations from Ovarian Stimulation (AMIGOS)-REVISED ARRA Funds

GREGORY M CHRISTMAN (Obstetrics and Gynecology Dept)

\$141,326 12/01/2010 - 09/29/2012

Zhejiang Yunsha Group Co., LTD

NSF I/UCRC on Intelligent Maintenance Systems Zhejiang Yunsha Membership & Enhancement

JUN NI (CoE Ind/Univ Coop Research Ctr)

\$70,000 01/01/2011 - 12/31/2011