

Received by the Regents

October 23, 2008

AWARDS PROCESSED
Research and Other Sponsored Activities
September 1, 2008 through September 30, 2008

The awards detailed in this list were processed September 1, 2008 through September 30, 2008. The dollar values depict the best available estimate of the funding the University should receive over the life of the award. These values may be modified, as additional data become available relative to future funding prospects. These modifications are not reported in the attached list. As a result, the dollar values of awards presented in this list will differ from the year-end totals. The full amount of an award is recorded in the year in which it was received. Often these funds are expended over several years, making comparisons between awards and expenditures somewhat misleading. Research expenditures are presented here to provide a trend line for the current fiscal year.

	Number of Awards FY 2008	Number of Awards FY 2009	% Change	Value of Awards FY 2008	Value of Awards FY 2009	% Change
Total Awards Processed (September)	266	301	13.2%	\$151,791,025	\$178,813,654	17.8%
Research Awards	202	237	17.3%	\$147,190,686	\$171,356,937	16.4%
Research Training	11	12	9.1%	\$1,090,701	\$976,251	(10.5%)
Other Sponsored Activity	53	52	(1.9%)	\$3,509,638	\$6,480,466	84.6%
<hr/>						
Total Awards Processed Fiscal Year to Date	818	916	12.0%	\$352,062,008	\$439,691,978	24.9%
Research Awards	612	695	13.6%	\$329,173,074	\$399,929,604	21.5%
Research Training	56	42	(25.0%)	\$11,277,126	\$14,787,661	31.1%
Other Sponsored Activity	150	179	19.3%	\$11,611,808	\$24,974,713	115.1%

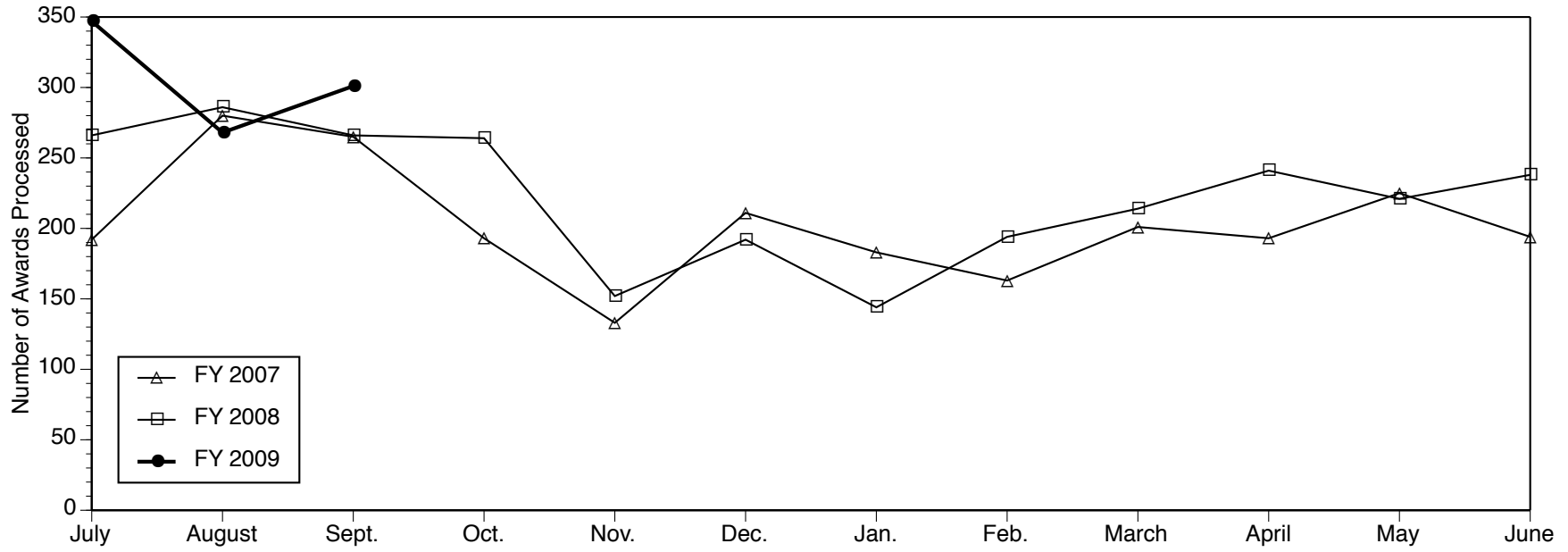
The first quarter of FY 2009 remains strong when compared with the first quarter of FY 2008 in terms of both number and dollar value. Interestingly in FY 2008, there were 46 awards valued at \$1.0 million or more totaling \$130.0 million compared with FY 2009 where there were only 37 such awards totaling \$111.8 million. The 13.2% increase in the number of awards in FY 2009 over FY 2008 more than made up the differences in the increase of dollar value in FY2009.

----- RESEARCH EXPENDITURES -----

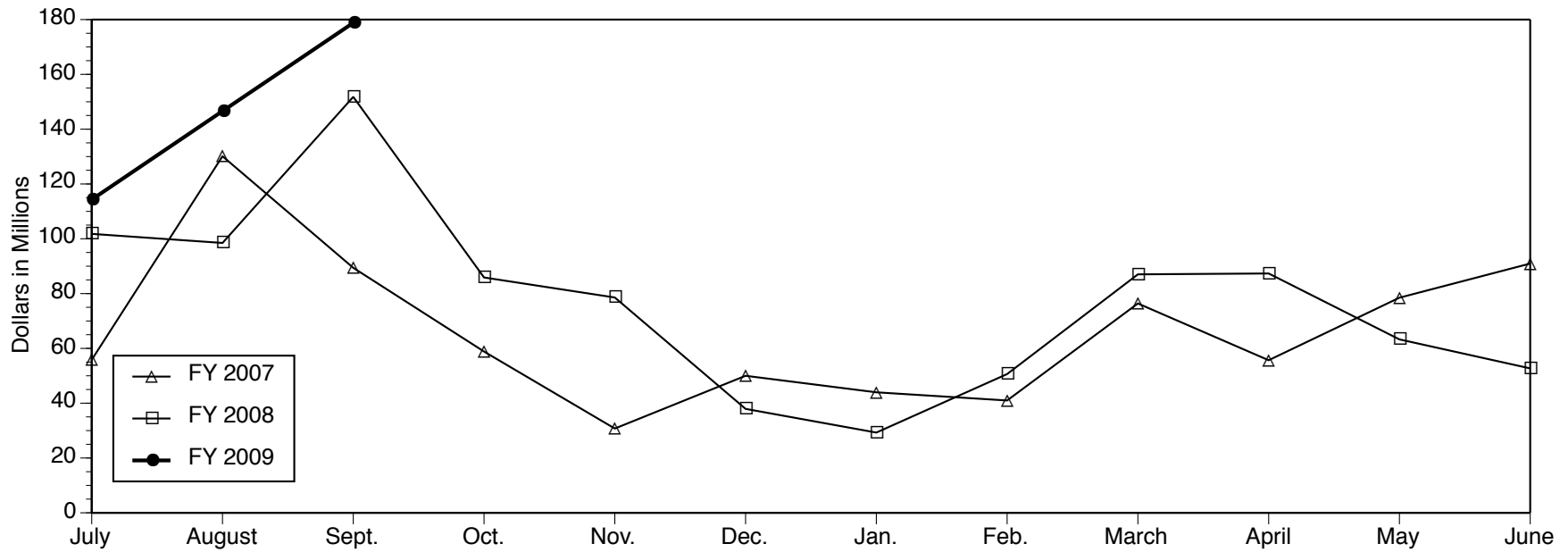
	Federal Expendable Restricted	Other Funds	Total Expenditures
August 2008	\$111,873,170	\$47,555,461	\$159,428,631
August 2007	\$111,943,445	\$67,515,004	\$149,458,449
Percent Change	(.01%)	26.8%	6.7%

Source: Division of Research Development and Administration

Number of Awards Processed



Dollar Value of Awards Processed



Data Source: Division of Research Development and Administration

PROJECTS ESTABLISHED FOR RESEARCH AND OTHER SPONSORED ACTIVITIES

September 1, 2008 through September 30, 2008

The projects listed here by sponsor were established during the month designated in the heading above. For each project, the listing includes the project title, the project director (and his or her unit affiliations), faculty or primary research staff participating in the project (and their unit affiliations), the amount awarded for the period, and the project period. NOTE: When more than one unit is listed for the project director, the unit responsible for the project is given first.

Abbott Laboratories

Developmental Toxicity Assessment Using Rat Whole Embryo Culture
CRAIG HARRIS (Environmental Health Sciences)
\$30,307 09/09/08 - 09/08/09

Alba Therapeutics Corp.

Amendment to MTA Dated 4/18/07
PETER A WARD (Pathology Department)
\$6,888 01/01/08 - 04/18/09

Albert Einstein Healthcare Network

Neurobiological Mechanisms Behind Pain Modulation in Subtypes of Fibromyalgia
EDWARD A HURVITZ (Physical Medicine & Rehab Dept)
\$80,956 07/07/08 - 07/06/09

American Academy of Neurology

Defining the Mechanism of mRNA-Mediated Neurodegeneration in Fragile X Tremor Ataxia Syndrome
HENRY L PAULSON (Neurology Department)
\$130,000 07/01/08 - 06/30/10

American Association for Cancer Research, Inc.

The Role of MicroRNAs in Prostate Cancer Progression
ARUL M CHINNAIYAN (Ctr for Translational Pathology)
\$40,000 07/01/08 - 06/30/09

American Chemical Society

Arthur C. Cope Award
MELANIE S SANFORD (LSA Chemistry)
\$40,000 09/01/08 - 08/31/11

American College of Surgeons

A Pilot Study of Radio Frequency Ablation in High-Risk Patients with Stage IA Non-Small Cell Lung Cancer
BASKARAN SUNDARAM (Radiology Department)
With ELLA A KAZEROONI (Radiology Department); MORAND RUEDIGER PIERT (Radiology-Nuclear Medicine)
\$35,000 09/01/07 - 08/31/11

American Diabetes Association, Inc.

An Informatics Approach to Human Sural Nerve Biomarkers of Diabetic Neuropathy
EVA L FELDMAN (Neurology Department)
With KELLI A SULLIVAN (Neurology Department)
\$300,000 07/01/08 - 06/30/11
Regulation of Hepatic Lipid Metabolism Through the PGC-1 α /Smarcd1 Coactivator Complex
JIANDIE LIN (Life Sciences Institute-Admin)
\$912,500 07/01/08 - 06/30/13

American Thoracic Society (ATS)

Epigenetic Regulation of the E Prostanoid 2 Gene in Lung Fibroblasts
MARC PETERS-GOLDEN (Int Med-Pulm./Critical Care)
\$50,000 07/01/08 - 06/30/09

Ann Arbor, City of

Community Family Health Center - Primary Health Care Services
EMILY K MEULEMAN (School of Nursing)
\$25,000 07/01/08 - 06/30/09

Aptuit

Theoretical and Experimental Assessment of the True Solubility of Cocryystals

NAIR RODRIGUEZ-HORNEDO

(College of Pharmacy)

\$98,921 09/01/08 - 08/31/09

Arkansas, State of, Department of Workforce Education

Project IDEAL State Membership: Arkansas

JEROME JOHNSTON (RCGD-

Communication/Education)

\$17,850 07/01/08 - 06/30/09

Ascenta Therapeutics

Development of Novel Anticancer Drugs

SHAOMENG WANG (Int Med-

Hematology/Oncology)

\$247,385 10/01/06 - 09/30/09

Development of Novel Anticancer Drugs

SHAOMENG WANG (Int Med-

Hematology/Oncology)

\$490,872 10/01/06 - 09/30/09

Association of Schools of Public Health, Inc.

ASPH Education Committee: DrPH Core

Competency Development Project

JUDITH G CALHOUN (Health

Management and Policy)

\$52,210 12/01/07 - 09/30/09

Astellas Pharma US, Inc.

Amend 4: A Phase III Randomized, Open-Label, Comparative, Multi-Center Study to Assess the Safety and Efficacy of Prograf/MMF, Modified Release (MR) Tacrolimus/MMF and Neoral MMF in De Novo Kidney Transplant Recipient

DIANE M CIBRIK (Int Med-Nephrology)

\$49,355 06/30/07 - 12/31/08

A Phase 2, Randomized, Open-Label, Parallel Group, Multi-Center Study to Assess the Safety and Efficacy of Alefacept in De Novo Kidney Transplant Recipients

DIANE M CIBRIK (Int Med-Nephrology)

\$281,640 05/01/08 - 08/31/11

A Phase II, Open-Label, Multicenter Study to Assess the Pharmacokinetics, Long-Term Safety and Tolerability of Tacrolimus in Stable Liver Transplant Patients Converted from a Prograf-Based Immunosuppression Regimen to a Modified Release (MR) Tacrolimus Based Immunosuppression Regimen

JEFFREY D PUNCH (General Surgery Section)

\$11,820 11/30/07 - 12/01/09

Auburn University

Team-Math and MSP-MAP (University of Michigan) Quantitative Data Collaboration

STUART A KARABENICK (SOE-CPEP)

With MARTIN L MAEHR (SOE-CPEP)

\$153,324 10/01/08 - 09/30/09

Boehringer Ingelheim, Ltd.

A Randomized Open- Label Phase II Study of BIBW 2992 Versus Cetuximab (Erbix) in Patients with Metastatic or Recurrent Head and Neck Squamous Cell Carcinoma (HNSCC) After Failure of Platinum-containing Therapy with a Cross-Over Period for Progressing Patients

FRANCIS P WORDEN (Int Med-Hematology/Oncology)

\$180,888 09/03/08 - 09/02/10

Boeing Company, The

Advanced Co-Based Sheet Alloys for Thermal Protection Systems

TRESA M POLLOCK (Materials Science & Engin.)

\$25,000 04/01/08 - 12/31/08

Bosch-Rexroth Corporation

Design and Analysis of Efficient and Clean Power-Split Hydraulic Hybrid Vehicle Propulsion

ZORAN S FILIPI (Mechanical Engineering)

With MICHAEL KOKKOLARAS (Mechanical Engineering); HUEI

PENG (Mechanical Engineering)

\$299,576 11/01/07 - 10/31/10

Boston University

Additional Funding Request - 5th Scholar for the Scholars in Health Policy Research Program

PAULA M LANTZ (Health Management and Policy)

\$260,954 08/01/08 - 07/31/10

California Institute of Technology

SWICS and SWIMS Instruments for the Advanced Composition Explorer (ACE): Mission Operations and Data Analysis

GEORGE GLOECKLER (Space Physics Research Lab)

With LENNARD A FISK (Space Physics Research Lab); THOMAS H ZURBUCHEN (Space Physics Research Lab)

\$1,414,996 03/01/08 - 02/28/13

Case Western Reserve University

Individual Philanthropy: Motives and Strategic Management of Professional Athlete Foundations

KATHERINE M BABIAK (Division of Kinesiology)

\$15,000 08/01/08 - 07/31/09

Centocor, Inc.

Enumeration of Circulating Fibrocytes in Subjects with Idiopathic Pulmonary Fibrosis (IPF) Treated with a Novel Anti-Fibrotic Agent

BETHANY B MOORE (Int Med-Pulm./Critical Care)

\$125,145 08/01/08 - 07/31/09

Children's Hospital of Los Angeles

Biology and Therapy of High-Risk Neuroblastoma (NANT Amendment #10)

GREGORY A YANIK (Pediatrics-Hematology/Oncology)

\$12,500 06/01/08 - 05/31/09

Columbia University

Randomized Evaluation of Carotid Occlusion and Neurorecognition (RECON)

B GREGORY THOMPSON JR (Neurosurgery)

\$13,595 12/01/07 - 11/30/08

Comet Technology Corporation

Failure Initiation Predictors for Reliability-Based Design of Hybrid Composite Materials

ANTHONY M WAAS (Aerospace Engineering)

\$52,948 09/15/08 - 06/15/09

Commerce, Department of-Economic Development Administration

EDA University Center for Economic Diversification

LAWRENCE ALYN MOLNAR (IRLEE)

\$509,289 08/01/08 - 07/31/11

Commerce, Department of-National Oceanic and Atmospheric Administration

Mystery Beneath the Waves: Searching for Historic Shipwrecks Within and Beyond the Boundaries of the Thunder Bay National Marine Sanctuary

RYAN M EUSTICE (Naval Arch & Marine Dept)

\$11,000 09/15/08 - 09/30/09

NPOESS Microwave Imager Sounder Sensor Development and Requirement Specification

CHRISTOPHER S RUF (Space Physics Research Lab)

\$1,277,505 09/26/08 - 09/25/13

Commerce, Department of-Office of the Secretary

Investigating Nanoscale Interfacial Morphology Control in Organic Solar Cells and its Effect on Solar Energy Conversion Efficiency

L JAY GUO (CoE EECS-Ssel)

\$170,614 07/01/08 - 06/30/10

Common Solutions Group, The

CSG Secretariat-fiscal Year 09

CHARLES J ANTONELLI (School of Information)

\$57,650 07/01/08 - 06/30/09

Consortium for Plant Biotechnology Research

Zinc-Finger-Mediated Gene Targeting in Plant Cells

TZVI TZFIRA (LSA

Molec./Cell./Develop. Bio)

\$230,816 04/01/08 - 03/31/09

Core Technology Alliance

CTA Catalytic Funds: A Michigan Proteome Informatics Resource

PHILIP C ANDREWS (Bio-Med Tech for Proteomics)
\$41,250 06/01/08 - 05/31/09

Cytokinetics

Acute Administration of CK2066654 and CK2066260 in an In-Vitro Permeabilized Muscle Fiber Analysis System Using Human Tissue

DENNIS R CLAFLIN (Molec & Integrative Physiology)
\$59,957 09/05/08 - 09/04/09

Defense, Department of-Army, Department of the

Numerical Modeling of Maumee, Sandusky, and Grand River Watersheds

NATHAN S BOSCH (Sch of Nat Resources & Environ)
With J DAVID ALLAN (Sch of Nat Resources & Environ); DONALD SCAVIA (Sch of Nat Resources & Environ)
\$100,000 09/09/08 - 09/08/09

PTSD Trajectory, Co-Morbidity, and Utilization of Mental Health Services Among Reserves

SANDRO GALEA (Epidemiology Department)
\$835,270 09/15/08 - 10/14/11

Development of High Strength High Ductility Concrete (HSHDC) for Protective Structures

VICTOR C LI (Civil & Environmental Engr)
\$112,688 09/05/08 - 09/05/11

Mindfulness and Self-Compassion Meditation for Combat Posttraumatic Stress Disorder:

Randomized Controlled Trial and Mechanistic Study

ISRAEL LIBERZON (Psychiatry-ASAP)
With NICHOLAS GIARDINO (Psychiatry-ASAP); ANTHONY P KING (Psychiatry-ASAP); SHEILA RAUCH (Psych Vamc)
\$999,975 09/22/08 - 10/21/12

Supplement to ARO MURI: Conducting Tissue Scaffold for Peripheral Nerve Regeneration and Repair

DAVID C MARTIN (Materials Science & Engin.)

With PAUL STEPHEN CEDERNA (Plastic Surgery Section); JINSANG KIM (Materials Science & Engin.); DARYL R KIPKE (Biomedical Engineering)
\$994,201 07/01/08 - 11/30/09

New Microstructures for Old Monomers: Synthesis of Gradient Pi-Conjugated Copolymers

ANNE JENNIFER MCNEIL (LSA Chemistry)
\$50,000 09/15/08 - 06/14/09

Multi-Scale Process of Soil Freezing, Thawing, and Thaw-Settlement

RADOSLAW L MICHALOWSKI (Civil & Environmental Engr)
\$199,486 02/01/09 - 01/31/12

Packaging of Boeing Gyroscopes Using Michigan's HERMIT Technology

KHALIL NAJAFI (COE EECS - ECE - SSEL)
\$250,155 09/24/08 - 09/30/09

Defense, Department of-Defense Advanced Research Projects Agency

Ejecting Micromachined Atomizer (EMMA)

KHALIL NAJAFI (CoE EECS-Ssel)
\$150,489 09/22/08 - 10/30/09

Defense, Department of-National Geospatial-Intelligence Agency

Continuous-wave Atom Lasers: A Chip-based Approach

GEORG A RAITHEL (LSA Physics)
With KATSUO KURABAYASHI (Mechanical Engineering)
\$240,000 09/09/08 - 09/08/10

Defense, Department of-Navy, Department of the

Experimental Investigation of Passive Fish-Tail Kinematics to Enhance High-Damping Vortex Induced Vibration for Hydrokinetic Energy Harnessing

MICHAEL M BERNITSAS (Naval Arch & Marine Dept)

\$25,000 08/01/08 - 07/31/09

Proposal for Workshops to Support Nucleation and Crystallization for Evaluation of Research Human-Level AI

JOHN E LAIRD (COE EECS - CSE - AI)

\$9,985 07/30/08 - 07/29/09

Crystallization and Polymorphism Studies on Alane

ADAM J MATZGER (LSA Chemistry)

\$99,983 02/11/08 - 06/30/09

-NiAl/ Al₂O₃ Interfaces for Thermal Barrier Coatings

TRESA M POLLOCK (Materials Science & Engin.)

\$35,000 07/15/08 - 08/31/10

Diamyd, Inc.

Project Manager for Preclinical and Clinical Development of HSV Gene Therapy

DAVID J FINK (Neurology Department)

\$5,100 07/01/08 - 09/30/08

DMG Dental Materials

Radiographic Progression of Infiltrated Caries Lesions in-vivo

MATHILDE C PETERS

(Cariology, Restor Sci & Endo)

With STEPHEN C BAYNE

(Cariology, Restor Sci & Endo);

BRIAN H CLARKSON

(Cariology, Restor Sci & Endo)

\$116,350 10/01/08 - 07/31/11

Eastern Michigan Environmental Action Council

Grantee Support MI AmeriCorps Partnership - 2008-10

MARGARET E DEWAR (Community Service Learning)

\$3,600 09/01/08 - 05/31/10

Educause Security Commission

Survey and Related Workshops Concerning the Bandwidth Network Capabilities and Needs of Minority-Serving and Rural Higher Education Institutions

ERIC L DEY (SOE-CSHPE)

\$34,613 06/06/08 - 09/30/08

Energy, Department of

Precision Photometry to Study the Nature of Dark Energy

WOLFGANG B LORENZON (LSA Physics)

With MICHAEL S G SCHUBNELL (LSA Physics)

\$120,089 08/15/08 - 08/14/09

Crystallographic Studies of Methyl-Coenzyme M Reductase (supplement)

STEPHEN W RAGSDALE (Biological Chemistry Dept)

\$80,000 01/15/08 - 01/14/09

Mobile Robotics and Sensing-University Research Program in Robotics

DAVID K WEHE (Nuclear Eng & Radiological Sci)

\$500,000 09/01/08 - 08/31/09

ePACK, Inc.

Recharge-Chemical Engineering Clean Room

MARK A BURNS (Chemical Engineering Dept)

\$2,125 07/01/08 - 12/31/09

Florida Medical Quality Assurance, Inc

End-Stage Renal Disease (ESRD) Quality Infrastructure Support

JOHN D KALBFLEISCH (Biostatistics Department)

\$170,000 10/01/08 - 06/30/09

Florida, State of

DEP Contract SP673 - Mercury TMDL Task Assignment 4 - Atmospheric Monitoring

GERALD J KEELER (Environmental Health Sciences)

With JOSEPH T DVONCH

(Environmental Health Sciences)

\$1,569,753 09/15/08 - 08/31/09

Ford Motor Company Fund

Campus of Hope - Using the Virtual World to Improve Our World

JOHN JOSEPH CRISTIANO (Dbn
College of Eng-CEEP)
With BRUCE R MAXIM (Dbn Col of
Eng-Computer & Info)
\$100,000 08/07/08 - 08/06/09

Foundation for Biomedical Research of Gregorio Maranon Hospital

Spectral Properties of Wave Propagation Frequency and Fractionation in Acute versus Chronic Atrial Fibrillation

JOSE JALIFE (Int Med-Cardiology)
\$190,117 01/09/08 - 01/01/12

Foundation for Informed Medical Decision Making

Learning by Doing: Improving Risk Communication through Active Processing of Interactive Pictographs

BRIAN J ZIKMUND-FISHER
(Behavioral & Decision Sciences)
With ANGELA TSAI FAGERLIN
(Behavioral & Decision Sciences);
PETER A UBEL (Behavioral &
Decision Sciences)
\$100,000 10/01/08 - 09/30/09

Gates, Bill and Melinda, Foundation

A Clinical Trial of Helicobacter Pylori Eradication in Latin America

LAURENCE H BAKER (Int Med-
Hematology/Oncology)
With WILLIAM D CHEY (Int Med-
Gastroenterology)
\$2,520,905 07/24/08 - 07/24/10

A Mutable Vaccine for HIV

MARILIA I CASCALHO (General
Surgery Section)
\$100,000 10/01/08 - 09/30/09

Innovation Bridge: Linking Biotech Breakthroughs to Emerging Vaccine Manufacturers

MATTHEW M DAVIS (Pediatrics-
Ambulatory Care Pgm)
\$100,000 10/01/08 - 09/30/09

GE Healthcare

Comparison of Contrast-Induced Nephrotoxicity in Outpatients from Intravenous Omnipaque and Isovue

RAVI KIRAN KAZA (Radiology
Department)
\$387,269 07/01/08 - 06/30/10

Gemin X Pharmaceuticals

UMCC 2008.017 A Multicenter, Open-Label, 2-Stage, Phase II Study of Single-Agent Obatoclox Mesylate administered for 3 Consecutive Days Every 2 Weeks to Older Patients with Previously Untreated Acute Myeloid Leukemia

HARRY P ERBA (Int Med-
Hematology/Oncology)
\$207,673 08/01/08 - 07/31/10

Genentech, Inc.

Pulmozyme; Z4240g, A Phase IV, Multicenter, Randomized, Double-Blind, Placebo-Controlled Trial of Pulmozyme_g in 3-5 Year Old Patients with Cystic Fibrosis

AMY G FILBRUN (Pediatrics-Pulmonary
Medicine)
\$50,210 02/01/08 - 09/30/09

General Electric Company

NSF: IUCRC Industry Sponsorship YR 3 (GE Global Research)

JYOTIRMOY MAZUMDER (CoE
Claims Lab)
\$30,000 12/21/07 - 12/20/08

General Motors Corporation

ME 450 Mechanical Design - Fall 2007

STEVEN J SKERLOS (Mechanical
Engineering)
\$2,900 09/01/07 - 12/31/07

Genesee, County of - Drain Commission

Our Water: Public Education Campaign

JONATHAN H JAROSZ (Flint
Ctr/Environmental Rsch)
\$57,420 07/01/08 - 05/31/09

German Science Ministry

SPIN@COSY: Spin Manipulating Polarized Deuterons and Protons

ALAN D KRISCH (LSA Physics)
\$136,486 10/01/08 - 09/30/10

Health and Human Services, Department of Agency for Health Care Research and Quality
Integration, Service Diversity, and Preventable Hospitalizations

JEFFREY A ALEXANDER (Health Management and Policy)

\$28,143 09/30/08 - 09/29/09

Outcomes of Blood Pressure Management in Diabetes Patients with Comorbidities

CAROLINE S BLAUM (Int Med-Geriatric Medicine)

With STEVEN J BERNSTEIN (Int Med-General Medicine); HAE MI CHOE (College of Pharmacy); EVE ASKANAS KERR (Int Med-General Medicine); MARY A ROGERS (Int Med-General Medicine)

\$312,158 09/30/08 - 09/29/10

Composite Measures of Surgical Performance

JUSTIN B DIMICK (General Surgery Section)

With JOHN D BIRKMEYER (General Surgery Section)

\$621,216 09/30/08 - 09/29/12

Health and Human Services, Department of Centers for Disease Control and Prevention

Translation Research to Prevent Motor Vehicle-Related Crashes and Injuries to Teen Drivers and Their Passengers: Translating the Checkpoints Program for State-Wide Distribution on the Web

C RAYMOND BINGHAM (UMTRI-Social & Behav Analysis)

With JEAN T SHOPE (UMTRI-Social & Behav Analysis)

\$1,400,000 09/30/08 - 09/29/12

Centers for Genomics and Public Health

TOBY CITRIN (Health Management and Policy)

With SHARON REILLY KARDIA (Epidemiology Department)

\$40,000 09/01/08 - 08/31/09

Contributing to Managing Epilepsy Well

NOREEN M CLARK (Hlth Behavior & Hlth Ed Dept)

\$99,953 09/30/08 - 09/29/09

Efficacy of NPI's on ILI Symptom Definitions And Varying Respiratory Etiologies

ARNOLD S MONTO (Epidemiology Department)

With ALLISON ELIZABETH

AIELLO (Epidemiology Department)

\$181,000 09/30/07 - 09/29/09

Reducing Social Disparities of Heatwave Impacts in a Changing Climate

MARIE SYLVIA O'NEILL (Environmental Health Sciences)

With EDITH A PARKER (Hlth Behavior & Hlth Ed Dept); RICHARD B ROOD (Atm, Oceanic & Space Sci.)

\$1,317,447 09/01/08 - 09/29/11

Health and Human Services, Department of National Institutes of Health

Gene Mapping of Complex Traits Using Resequencing Data

GONCALO ABECASIS (Biostatistics Department)

With SEBASTIAN K ZOELLNER (Biostatistics Department)

\$1,109,296 09/25/08 - 06/30/11

Neurodegeneration in Aging Retarded Mice

ROGER L ALBIN (Neurology Department)

With RICHARD A MILLER

(Pathology Department)

\$292,167 09/01/08 - 07/31/10

Understanding Decision Making and Breast Cancer Reconstruction

AMY K ALDERMAN (Plastic Surgery Section)

With SARAH T HAWLEY (Int Med-General Medicine); NANCY K JANZ (Hlth Behavior & Hlth Ed Dept);

STEVEN J KATZ (Int Med-General Medicine)

\$382,388 09/22/08 - 08/31/10

Genetic and Genomic Approaches for Studying Inherited Peripheral Neuropathies

ANTHONY ANTONELLIS (Human Genetics Department)

\$739,853 09/01/08 - 08/31/11

Molecular Determinants of Function in Kir2.x Channels
 JUSTUS MUKOLU ANUMONWO (Int Med-Cardiology)
 With MARIO DELMAR (Int Med-Cardiology); KAREN LYNN VIKSTROM (Int Med-Cardiology)
 \$1,335,735 04/01/08 - 08/31/12
 NCIBI Building Bridges: BioIMAGE - Intelligent seMantic Analysis of Biomedical Images
 BRIAN D ATHEY (CCMB-Initiatives)
 \$99,997 09/30/08 - 07/31/09
 FY 2008 CTEP Supplemental Funding CA32102
 LAURENCE H BAKER (Int Med-Hematology/Oncology)
 \$23,827 01/01/08 - 12/31/08
 Southwest Oncology Group CCOP Research Base Supplement for S0715
 LAURENCE H BAKER (Int Med-Hematology/Oncology)
 \$464,405 06/01/08 - 05/31/11
 Training Program in Endocrinology and Metabolism - supplement
 ARIEL L BARKAN (Metabolism, Endo & Diabetes)
 \$26,797 07/01/08 - 06/30/09
 Training Program in Endocrinology and Metabolism - Minority Supplement
 ARIEL L BARKAN (Metabolism, Endo & Diabetes)
 \$127,914 09/20/08 - 06/30/10
 Bridge Funding: Identifying Genes for Type 2 Diabetes: FUSION
 MICHAEL LEE BOEHNKE (Biostatistics Department)
 \$500,000 06/01/08 - 05/31/09
 Multiscale Modeling Tools for Structural Biology
 CHARLES L BROOKS III (LSA Chemistry)
 \$1,804,093 01/01/08 - 08/31/10

Integrated Systems Biology Approach to Diabetic Microvascular Complications
 FRANK C BROSIUS III (Int Med-Nephrology)
 With CHRISTOPHER W BEECHER (Ctr fr Translational Pathology); EVA L FELDMAN (Neurology Department); MATTHIAS KRETZLER (Int Med-Nephrology); DAVID M LUBMAN (Surgery Department); JIGNESH M PATEL (Elec Engr & Comp Sci); SUBRAMANIAM PENNATHUR (Int Med-Nephrology); KERBY A SHEDDEN (LSA Statistics); PETER JAMES WOOLF (Chemical Engineering Dept)
 \$463,500 09/30/08 - 09/29/09
 GLUT4 Determines Vascular Responses in Hypertension Administrative Supplement
 FRANK C BROSIUS III (Int Med-Nephrology)
 \$47,473 02/01/08 - 01/31/12
 Using Embryonic Stem Cells to Re-create a Human Tumor Microenvironment to Develop Ovarian Cancer Therapeutic and Diagnostic Tools
 RONALD J BUCKANOVICH (Int Med-Hematology/Oncology)
 \$2,317,500 09/30/08 - 08/31/13
 Using Systems Biology to Understand Islet Adaptation and Failure in Diabetes - Supplemental Funding
 CHARLES BURANT (Metabolism, Endo & Diabetes)
 \$15,429 08/01/07 - 05/31/09
 Public / Private Collaboration for High-Quality Protein-Ligand Data
 HEATHER A CARLSON (College of Pharmacy)
 With JEANNE A STUCKEY (Life Sciences Institute-Admin); SHAOMENG WANG (Int Med-Hematology/Oncology)
 \$5,072,346 09/29/08 - 08/31/13

Evolution, Genetics, and Skin Color (Admin Supplement to F015146)
 TOBY CITRIN (Health Management and Policy)
 \$8,522 04/01/08 - 03/31/09

A Partnership to Enhance Research Related to the Management of Chronic Disease
 NOREEN M CLARK (Hlth Behavior & Hlth Ed Dept)
 \$77,250 09/30/08 - 08/31/10

University of Michigan MAPP Research Network Discovery Site
 DANIEL J CLAUW (Anesthesiology Department)
 With JAMES QUENTIN CLEMENS (Urology Surgery); RICHARD H GRACELY (Int Med-Rheumatology); RICHARD E HARRIS (Int Med-Rheumatology); ANN L OLDENDORF (Urology Surgery); DAVID A WILLIAMS (Int Med-Rheumatology)
 \$4,772,276 09/15/08 - 06/30/13

Role of the Immune Receptor Nod1 in Inflammation-associated Colon Tumorigenesis
 KATHLEEN A COONEY (Int Med-Hematology/Oncology)
 \$532,480 09/16/08 - 08/31/12

Supplement to Drug Use in Latin American Youth: Longitudinal Study from Infancy to Adolescence
 JORGE DELVA (School of Social Work)
 \$49,211 04/01/08 - 03/31/09

Advanced Ultrasound Ablation Therapy for Atrial Fibrillation
 CHERI XIAOYU DENG (Biomedical Engineering)
 With CHARLES A CAIN (Biomedical Engineering); AMAN CHUGH (Int Med-Cardiology); ZHEN XU (Biomedical Engineering)
 \$2,910,045 09/30/08 - 08/31/13

Social and Neighborhood Predictors of Obesity in Belo Horizonte
 ANA V DIEZ ROUX (Epidemiology Department)
 \$115,093 09/01/08 - 04/30/11

Medical Marvels Interactive Translational Research Experience (MITRE)
 MICHAEL D FETTERS (Department of Family Medicine)
 With ANANDA SEN (Ctr Statistical Consul & Res)
 \$77,250 09/30/08 - 09/29/10

PET Study of Biochemistry and Metabolism of the CNS
 KIRK A FREY (Radiology-Nuclear Medicine)
 With ROGER L ALBIN (Neurology Department); NICOLAAS BOHNEN (Radiology-Nuclear Medicine); RONALD DAVID CHERVIN (Neurology Department); SID GILMAN (Neurology Department); BRUNO J GIORDANI (Psychiatry-Neuropsychology); MICHAEL R KILBOURN (Radiology-Nuclear Medicine); ROBERT A KOEPPE (Radiology-Nuclear Medicine); ALAN M MELLOW (Psychiatry Department); DAVID M RAFFEL (Radiology-Nuclear Medicine)
 \$6,354,007 09/15/08 - 06/30/13

Fostering Independence in Nursing and Outcomes Research
 CHRISTOPHER RYAN FRIESE (SON-(Div I) Division of Acute)
 With LAUREL L NORTHOUSE (SON-(Div I) Division of Acute)
 \$177,619 09/18/08 - 06/30/10

Ecologic S, PTSD, and Drug Abuse in Detroit - Supplement
 SANDRO GALEA (Epidemiology Department)
 With JORGE DELVA (School of Social Work)
 \$185,672 09/01/08 - 08/31/10

Engaging the Community in Clinical Research
 LARRY D GRUPPEN (Med Ed/Ofc of Ed Resources&Res)
 With JANE L BLUMENTHAL (University Library)
 \$77,249 09/30/08 - 08/31/10

Forebrain Modulation of Pain
 JANEAN E HOLDEN (SON-(Div I)
 Division of Acute)
 \$1,871,960 07/01/08 - 06/30/13

Regulation of Nuclear Receptor Function Through
 SUMO Modification
 JORGE A INIGUEZ-LLUHI
 (Pharmacology Department)
 \$77,250 09/20/08 - 08/31/09

Urban Community Oral Health Interventions
 Project
 AMID ISMAIL (Cariology, Restor Sci &
 Endo)
 With WOOSUNG SOHN
 (Cariology, Restor Sci & Endo)
 \$858,273 09/22/08 - 05/31/10

Arrhythmia Mechanisms in Two Inherited
 Cardiac Diseases
 JOSE JALIFE (Int Med-Cardiology)
 \$8,179,324 01/01/08 - 08/31/12

Intercellular Communication and Impulse
 Propagation
 JOSE JALIFE (Int Med-Cardiology)
 With JUSTUS MUKOLU
 ANUMONWO (Int Med-Cardiology);
 OMER BERENFELD (Int Med-
 Cardiology); MARIO DELMAR (Int
 Med-Cardiology); HASSAN MUSA
 (Int Med-Cardiology); KAREN LYNN
 VIKSTROM (Int Med-Cardiology);
 SHARON ZLOCHIVER (Int Med-
 Cardiology)
 \$6,190,930 03/16/08 - 08/31/11

Racial/Ethnic Disparities in Work and QoL
 Outcomes in Survivors of Breast Cancer
 STEVEN J KATZ (Int Med-General
 Medicine)
 With JENNIFER J GRIGGS (Int Med-
 Hematology/Oncology); SARAH T
 HAWLEY (Int Med-General
 Medicine); TIMOTHY P HOFER (Int
 Med-General Medicine); NANCY K
 JANZ (Hlth Behavior & Hlth Ed Dept)
 \$1,542,334 09/01/08 - 08/31/11

Implementing Chronic Care Management for
 Bipolar Disorder
 AMY MACLAY KILBOURNE (Psych
 HlthSvc Outcome Research)
 With DANIEL EISENBERG (Health
 Management and Policy); HYUNGJIN
 MYRA KIM (Ctr Statistical Consul &
 Res); KAREN K MILNER (Psych
 Hospital & Community Svc)
 \$3,431,634 09/19/08 - 05/31/13

A Role for Osteoimmunology in Leptin-Regulated
 Bone Metabolism
 PAUL H KREBSBACH (Biologic and
 Materials Science)
 \$83,544 09/01/08 - 08/31/10

Infant Stress Response: Effects of Maternal PTSD
 and Infant Genes
 ISRAEL LIBERZON (Psychiatry-ASAP)
 \$717,163 09/22/08 - 06/30/12

Mechanisms of Inflammation in Gestational
 Membranes
 RITA LOCH-CARUSO (Environmental
 Health Sciences)
 With STUART ARTHUR
 BATTERMAN (Environmental Health
 Sciences); MARK CHAMES
 (Obstetrics and Gynecology Dept);
 CRAIG HARRIS (Environmental
 Health Sciences)
 \$1,975,607 09/09/08 - 05/31/13

Hepatitis B Clinical Research Network Virology
 Center
 ANNA SUK-FONG LOK (Int Med-
 Gastroenterology)
 \$2,543,438 09/30/08 - 05/31/15

Longitudinal Studies of Autism Spectrum
 Disorders: 2 to 23
 CATHERINE LORD (UM Autism &
 Comm Disorders Ctr)
 With MOHAMMAD GHAZIUDDIN
 (Psychiatry Department)
 \$2,484,190 09/01/08 - 05/31/13

Periodontal Engineering Using Biomimetic Nano Scaffolds
PETER X MA (Biologic and Materials Science)
With WILLIAM V GIANNOBILE (Periodontics and Oral Medicine)
\$1,476,931 09/30/08 - 07/31/12

Multiple Roles of the aPI2 Moiety in API2-MALT1-Mediated Lymphomagenesis
LINDA M MCALLISTER-LUCAS (Pediatrics-Hematology/Oncology)
With JASON EDWARD GESTWICKI (Pathology Department);
PETER C LUCAS (Pathology Department)
\$1,595,733 09/01/08 - 07/31/13

Integral Role of Hematopoietic Cells in PTH Actions in Bone
LAURIE KAY MCCAULEY (Periodontics and Oral Medicine)
With RUSSELL S TAICHMAN (Periodontics and Oral Medicine)
\$423,393 09/08/08 - 08/31/10

Study of the Impact of Heterogeneity and Non-Random Mixing on Smoking Behavior
DAVID MENDEZ (Health Management and Policy)
With RICK L RIOLO (LSA Study of Complex Systems); CARL P SIMON (LSA Study of Complex Systems)
\$135,213 04/01/08 - 03/31/09

Cellular and Molecular Biology of Aging: Administrative Supplement
RICHARD A MILLER (Institute of Gerontology)
With JAMES M HARPER (Pathology Department)
\$148,880 09/15/08 - 06/30/09

Laboratory for Anti-Geric Testing, Evaluation and Research
RICHARD A MILLER (Pathology Department)
\$585,651 07/01/08 - 06/30/09

Carotid Angioplasty and Stenting in the Elderly
BRAHMAJEE K NALLAMOTHU (Int Med-Cardiology)
\$348,398 09/30/08 - 08/31/10

Discovery and Characterization of Novel Small Molecule Inhibitors of Mcl-1
ZANETA NIKOLOVSKA-COLESKA (Int Med-Hematology/Oncology)
\$38,625 07/05/06 - 06/30/09

Air Pollution, Inflammation and Preterm Birth: A Mechanistic Study in Mexico City
MARIE SYLVIA O'NEILL (Environmental Health Sciences)
With DANIEL G BROWN (Sch of Nat Resources & Environ); ANA V DIEZ ROUX (Epidemiology Department); BRISA N SANCHEZ (Biostatistics Department)
\$1,853,862 09/01/08 - 05/31/13

Pathogenesis of Keratin-Containing Inclusions in Liver Disease
BISHR OMARY (Molec & Integrative Physiology)
\$1,377,187 07/01/08 - 06/30/12

Keratin Biology and Disease Aspects in Simple Epithelia
BISHR OMARY (Molec & Integrative Physiology)
\$196,935 08/01/08 - 01/31/09

Cytokine and Neurotransmitter Interactions in Sleep Regulation
MARK R OPP (Anesthesiology Department)
\$378,075 09/01/08 - 08/31/09

Cholinergic and Cognitive Decline in Response to Tr1A Knockdown Using RNAi
VINAY VIJAY PARIKH (LSA Psychology)
With MARTIN FRIEDRICH SARTER (LSA Psychology)
\$131,326 09/15/08 - 08/31/10

Xenogeneic Natural Antibody Targets - Structure / Function
JEFFREY L PLATT (General Surgery Section)
\$1,288,802 02/01/08 - 08/31/11

Cardiac Transplantation in Infancy
JEFFREY L PLATT (General Surgery Section)
\$2,609,378 02/01/08 - 06/30/10

Curcumin: A Multimechanism HIV Microbicide
RAJU C REDDY (Int Med-Pulm./Critical
Care)

With DAVID M MARKOVITZ (Int
Med-Infectious Diseases)
\$372,714 09/25/08 - 08/31/10

HITS for FADD Kinase Inhibitors Using
Molecular Imaging

ALNAWAZ REHEMTULLA (Radiation
Oncology - Ann Arbor)

With MAHAVEER S BHOJANI
(Radiation Oncology - Ann Arbor);
BRIAN DALE ROSS (Radiology
Department)
\$276,975 09/03/08 - 08/31/10

BRM Promoter Polymorphism, A Marker For
Cancer Risks

DAVID N REISMAN (Int Med-
Hematology/Oncology)
\$154,500 09/15/08 - 08/31/10

Molecular Genetics of Primary Open-Angle
Glaucoma

JULIA E RICHARDS (Ophthalmology &
Visual Science)
\$369,058 07/01/08 - 06/30/09

In Vivo Imaging of Neoplasia

BRIAN DALE ROSS (Radiology
Department)

With THOMAS L CHENEVERT
(Radiology Department); ERIC R
FEARON (Int Med-Molecular
Med&Genetics); CRAIG J GALBAN
(Radiology Department); MAHA
HUSSAIN (Int Med-
Hematology/Oncology); TIMOTHY D
JOHNSON (Biostatistics Department);
GARY D LUKER (Radiology
Department); PAUL EDWARD
MCKEEVER (Pathology Department);
CHARLES R MEYER (Radiology
Department); ALNAWAZ
REHEMTULLA (Radiation Oncology
- Ann Arbor); THOMAS D WANG
(Int Med-Gastroenterology); MAX S
WICHA (Int Med-
Hematology/Oncology)
\$9,775,752 09/22/08 - 03/31/13

Brief Motivational Intervention for Alcohol Use
and Sexual Behavior

JOHN E SCHULENBERG (SRC-Mtf)
\$141,318 08/25/08 - 08/24/11

ATDC Function in Human Pancreatic
Adenocarcinoma

DIANE M SIMEONE (General Surgery
Section)

With MATS E D LJUNGMAN
(Radiation Oncology - Ann Arbor);
LIANG XU (Radiation Oncology -
Ann Arbor)
\$1,272,888 09/01/08 - 07/31/12

Structural Biology of Complex Enzymes

JANET L SMITH (Life Sciences Institute-
Admin)

\$1,499,196 08/01/08 - 06/30/12

Community Health Worker Diabetes
RCT for Latinos

MICHAEL SPENCER (School of Social
Work)

With ROBERT M ANDERSON (Med
Ed/Ofc of Ed Resources&Res);
MARY ELLEN MICHELE HEISLER
(Int Med-General Medicine); EDITH
C KIEFFER (School of Social Work)
\$2,644,741 09/15/08 - 07/31/13

Female Pelvic Floor Disorders - Data
Coordinating Center

CATHERINE A SPINO (Biostatistics
Department)
\$966,522 07/01/08 - 06/30/09

An Integrated System for Tumor Detection and
Targeted Drug Therapy of Cancer

DUXIN SUN (College of Pharmacy)
\$1,063,642 08/13/08 - 04/30/12

Autophagy as a Component of the Innate Immune
Response

MICHELE S SWANSON (Microbiology
and Immunology)

With THEODORE J STANDIFORD
(Int Med-Pulm./Critical Care)
\$377,747 09/23/08 - 08/31/09

fMRI Study of Developing Medial Prefrontal
Cortical Function in Pediatric OCD

STEPHAN F TAYLOR (Psychiatry
Depression Center)

\$900,600 09/24/08 - 06/30/13

Electrophilic Boranes: Directed Hydroboration,
Borylation, and Related Reactions

EDWIN VEDEJS (LSA Chemistry)

\$87,897 07/01/07 - 08/31/09

Novel Therapeutic Targets for Venous
Thromboembolism

THOMAS W WAKEFIELD (Vascular
Surgery Section)

With PETER K HENKE (Vascular
Surgery Section); DANIEL DURANT
MYERS JR (Vascular Surgery
Section)

\$3,682,719 09/26/08 - 07/31/13

Cocaine Regulation of miRNAs in Rats with
Differing Vulnerability to Drug Abuse

STANLEY J WATSON JR (Molecular &
Behav Neurosc Inst)

With HUDA AKIL (Molecular &
Behav Neurosc Inst); FAN MENG
(Psych Labs and Bioinformatics);
ROBERT C THOMPSON (Psychiatry
Department)

\$2,021,984 09/15/08 - 06/30/13

Conference on Attrition and Non-Response in
Longitudinal Studies

DAVID R WEIR (SRC-Hrs)

With MICK P COUPER (SRC-Survey
Methodology Prog); KENNETH M
LANGA (ISR-Institute Sponsored);
MARY BETH OFSTEDAL (SRC-
Hrs)

\$15,603 09/24/08 - 02/16/09

SPORE in Head and Neck Cancer: The
Molecular Basis of Head and Neck Cancer
Biology, Treatment and Prevention

GREGORY T WOLF (Univ of Mich
Cancer Center)

With CAROL ROSSIER BRADFORD
(Otorhinolaryngology Department);

THOMAS E CAREY (Kresge Hearing
Research Inst); DOUGLAS BRIAN

CHEPEHA (Otorhinolaryngology
Department); KITRINA G CORDELL

(Oral Med/Path/Oncology); NISHA J
D'SILVA (Oral Med/Path/Oncology);

ZORA DJURIC (Department of
Family Medicine); SONIA A DUFFY

(School of Nursing); AVRAHAM
EISBRUCH (Radiation Oncology -

Ann Arbor); STEPHEN B GRUBER
(Int Med-Molecular Med&Genetics);

THEODORE S LAWRENCE

(Radiation Oncology - Ann Arbor);

DAVID M LUBMAN (Surgery
Department); JONATHAN B

MCHUGH (UMH H.O. Core

Pathology); JACQUES EDUARDO

NOR (Cariology, Restor Sci & Endo);

DANIEL P NORMOLLE (Radiation

Oncology - Ann Arbor); MUKESH

KUMAR NYATI (Radiation Oncology

- Ann Arbor); PETER J POLVERINI

(School of Dentistry); JEREMY M G

TAYLOR (Biostatistics Department);

THEODOROS N TEKNOS

(Otorhinolaryngology Department);

SHAOMENG WANG (Int Med-

Hematology/Oncology); FRANCIS P

WORDEN (Int Med-

Hematology/Oncology)

\$11,500,000 07/01/08 - 06/30/13

Head and Neck SPORE Supplement - HIV in HNSCC

GREGORY T WOLF (Univ of Mich Cancer Center)
With THOMAS E CAREY (Kresge Hearing Research Inst); JONATHAN B MCHUGH (Pathology Department); JEFFREY S MOYER (Otorhinolaryngology Department)
\$175,000 09/01/08 - 06/30/09

Image-Guided Non-Invasive Ultrasonic Thrombolysis Using Histotripsy

ZHEN XU (Biomedical Engineering)
With CHARLES A CAIN (Biomedical Engineering); J BRIAN FOWLKES (Radiology Department); HITINDER SINGH GURM (Int Med-Cardiology); DANIEL DURANT MYERS JR (Vascular Surgery Section)
\$2,536,223 09/30/08 - 08/31/13

The Role of Beta-Adrenergic Signaling in Prostate Cancer

JINDAN YU (Ctr fr Translational Pathology)
\$257,184 09/01/08 - 08/30/10

Partners in Research Engagement for Action

MARC A ZIMMERMAN (Hlth Behavior & Hlth Ed Dept)
\$61,800 09/29/08 - 08/31/10

Effect of Nicotine on Postischemic Brain Inflammation

ANUSKA A ZOCHOWSKA (Pathology Department)
With RICHARD F KEEP (Neurosurgery)
\$370,093 09/20/08 - 06/30/10

Development and Use of rtfMRI for Self-Control of Nicotine Craving

JON K ZUBIETA (Molecular & Behav Neurosc Inst)
With LUIS HERNANDEZ (Magnetic Resonance Imaging Fac); DOUGLAS C NOLL (Biomedical Engineering); SCOTT J PELTIER (Magnetic Resonance Imaging Fac); KINH LUAN DINH PHAN (Psychiatry Department)
\$564,693 09/15/08 - 06/30/10

Heart Rhythm Society

Electrotonic Coupling Between Myofibroblasts and Myocytes Modulates the Dynamics of Wave Propagation
OMER BERENFELD (Int Med-Cardiology)
\$50,000 07/01/08 - 06/30/09

Hemophilia and Thrombosis Research Society (HTRS)

Deciphering the Genetic Basis for Clinical Heterogeneity in Thrombophilia Using a Zebrafish Model System
LAURENCE A BOXER (Pediatrics-Hematology/Oncology)
\$150,000 07/01/08 - 06/30/10

ICON Clinical Research, Inc.

UMCC 2008.013-A Phase 2, Multicenter, Randomized Study of IMC-A12 or IMC-1121B Plus Mitoxantrone and Prednisone in Metastatic Androgen-Independent Prostate Cancer (AIPC) Following Disease Progression on Docetaxel-Based Chemotherapy
MAHA HUSSAIN (Int Med-Hematology/Oncology)
\$831,002 09/01/08 - 08/31/11

Idaho National Laboratory

PARCS Methods Development for INL Reactor Simulation Programs
JOHN C LEE (Nuclear Eng & Radiological Sci)
With THOMAS J DOWNAR (Nuclear Eng & Radiological Sci)
\$60,000 08/06/08 - 09/30/08

Evaluation of PHEV Battery Charging
Architecture

CHRIS MI (Dbn Col of Eng-Electric &
Comp)

\$50,000 08/22/08 - 09/30/10

Inspire Pharmaceuticals, Inc.

A Phase 3, International, Multi-Center,
Randomized, Double-Blind, Placebo-Controlled,
Parallel-Group, Efficacy and Safety Study of
Denofosol Tetrasodium Inhalation Solution in
Patients with Cystic Fibrosis Lung Disease and
FEV

SAMYA Z NASR (Pediatrics-Pulmonary
Medicine)

With MANUEL ARTETA (Pediatrics-
Pulmonary Medicine); AMY G
FILBRUN (Pediatrics-Pulmonary
Medicine); CAREY NIEN-KAI
LUMENG (Pediatrics-Pulmonary
Medicine); WAN CHONG TSAI
(Pediatrics-Pulmonary Medicine)
\$30,495 03/01/08 - 03/01/10

Institute for Matching Person and Technology

Environmentally Appropriate Behavioral Cues for
Individuals with Traumatic Brain Injury

NED L KIRSCH (Physical Medicine &
Rehab Dept)

\$31,689 11/01/07 - 10/31/08

Institute of Museum and Library Services

Building Games Students Want to Play

KAREN MARKEY (School of
Information)

With SOO YOUNG RIEH (School of
Information); VICTOR ROSENBERG
(School of Information)
\$649,941 10/01/08 - 09/30/11

Copyright Review Management System

JOHN PRICE WILKIN (University
Library)

\$578,955 12/01/08 - 11/30/11

Intel Corporation

Curriculum Development: Addressing Multi-Core
Platform Issues

MARK W B BREHOB (CoE EECS-Rtcl)

With CHANDRASEKHAR

BOYAPATI (CoE EECS-Ssrl);

SCOTT MAHLKE (CoE EECS-Acal)

\$25,000 06/26/07 - 04/30/10

Jet Propulsion Laboratory

GeoSTAR ASIC Correlator Technology

Development and Risk Reduction for PATH

CHRISTOPHER S RUF (Space Physics
Research Lab)

\$279,130 09/18/08 - 09/02/09

Johns Hopkins University

Effects of Dietary Intake on Cardiovascular
Disease

KENNETH A JAMERSON (Int Med-
Cardiology)

\$8,280 08/12/08 - 12/31/09

**Johnson & Johnson Research & Development,
LLC.**

Johnson & Johnson Pharmaceutical Research &
Development, LLC Annual Fund Pool

ALAN R SALTIEL (Life Sciences
Institute-Admin)

\$600,000 09/01/08 - 08/31/11

Johnson, Robert Wood, Foundation

Speaking Together: Improving Language
Services at the University of Michigan Hospitals
and Health Centers and Throughout the State of
Michigan

CONNIE J STANDIFORD (Int Med-
General Medicine)

\$99,611 10/01/08 - 03/31/10

Justice, Department of

National Archive of Criminal Justice Data -
University of Michigan Archive Services

CHRISTOPHER D MAXWELL (ICPSR-
Archival Development)

\$100,000 09/01/08 - 08/31/09

Juvenile Diabetes Research Foundation International (JDRF)

Diffusion Tensor Imaging of Sural Nerves in Diabetic Peripheral Neuropathy

RODICA POP-BUSUI (Metabolism, Endo & Diabetes)

With EVA L FELDMAN (Neurology Department); ASHOK SRINIVASAN (Radiology Department)

\$604,142 09/01/08 - 08/31/11

Dyslipidemia and Diabetic Neuropathy

ANDREA M VINCENT (Neurology Department)

\$109,464 09/01/08 - 08/31/09

Law Library Microform Consortium

LLMC-Digital: Hosting Services

MARIA STELLA BONN (University Library)

\$457,959 04/13/07 - 08/30/11

Livermore, Lawrence, National Laboratory

Development of an RFID Tag Using Retro-Reflective Arrays

KAMAL SARABANDI (CoE EECS-Rad)

\$15,000 08/01/08 - 09/24/08

Lung Cancer Research Foundation

Investigation of Mesenchymal Stem Cells for Treatment of Radiation Therapy-Induced Lung Injury

THEODORE S LAWRENCE (Radiation Oncology - Ann Arbor)

\$50,000 07/01/08 - 06/30/09

Lung Rx, Inc.

A Single-Dose, Dose-Escalating Study Exploring the Safety, Pharmacokinetics, and Pharmacodynamic Effects of Inhaled Treprostinil Sodium Using the Nebu-Tec OPTINEB Inhalation Device in Patients with Pulmonary Hypertension Associated with Idiopathic Pulmonary Fibrosis

VALLERIE MCLAUGHLIN (Int Med-Cardiology)

With KEVIN M CHAN (Int Med-Pulm./Critical Care); FERNANDO JOSE MARTINEZ (Int Med-Pulm./Critical Care); MELVYN RUBENFIRE (Int Med-Cardiology)

\$90,226 08/12/08 - 08/31/09

MacArthur, John D. and Catherine T., Foundation

Credibility Assessment in the Participatory Web Environment

SOO YOUNG RIEH (School of Information)

\$430,000 05/21/08 - 05/20/11

Massachusetts Institute of Technology

MIT NECST Subcontract to University of Michigan

ANASTASIOS JOHN HART

(Mechanical Engineering)

\$85,000 09/01/07 - 08/31/09

Mayaterials Company

SBIR Phase 1b: Transparent Glass Fiber Reinforce Armor

JINSANG KIM (Materials Science & Engin.)

With RICHARD M LAINE (Materials Science & Engin.)

\$21,000 07/01/08 - 12/31/08

Mercury Data Systems

Personal Dead-Reckoning System Phase IV

JOHANN BORENSTEIN (Mechanical Engineering)

\$13,308 09/15/08 - 11/14/08

MGI Pharma Inc

Characterize Dose-Dependence Effects and Time Course of Three Antagonists on Cisplatin-Induced Increases in Vagal Afferent Spontaneous Activity and the Enhanced Neuronal Responses to SP

YING LI (Int Med-Gastroenterology)

\$150,005 09/04/08 - 07/31/09

Michigan Aerospace Corporation

LCS Stern Ramp Testing Additional Testing

GUY A MEADOWS (Naval Arch & Marine Dept)

\$12,000 07/11/08 - 09/30/08

Michigan Campus Compact

Students ACT! --Accessing College Through Theatre--Year 3

CHARLES C BRIGHT (LSA UG: Residential College)

\$40,780 09/01/08 - 08/31/09

Michigan Coalition Against Domestic and Sexual Violence, The (MCADSV)

New Visions: Alliance to End Violence in Asian/Asian American Communities
MIEKO YOSHIHAMA (School of Social Work)
\$22,542 09/30/07 - 01/29/09

Michigan Department of Corrections

The Michigan Prisoner Reentry Initiative: A Plan for Comprehensive Evaluation
JEFFREY D MORENOFF (Pop Studies-Research)
With DAVID JAMES HARDING (Pop Studies-Research)
\$22,000 09/01/08 - 09/30/09

Michigan, State of, Human Services, Department of

Michigan AmeriCorps Partnership - 2008-09
MARGARET E DEWAR (Community Service Learning)
\$324,758 09/01/08 - 08/31/09

Mott, Charles Stewart, Foundation

Explore Establishment of Varsity Athletics
DAVID E LOSSING (Flint Chancellor's Office)
\$75,000 06/01/08 - 03/31/09

Nano-C, Inc.

Evaluation of Carbon Nanotubes for Manufacturing of Conductive Transparent Materials
NICHOLAS KOTOV (Chemical Engineering Dept)
\$24,722 05/01/08 - 04/30/09

National Aeronautics and Space Administration

Health Monitoring of Aerospace Structures
DENNIS S BERNSTEIN (Aerospace Engineering)
\$249,648 09/01/08 - 08/31/09

Detecting Emission from the Missing Baryons Through X-Ray Shadowing

JOEL N BREGMAN (LSA Astronomy)
\$71,600 07/24/08 - 07/23/09

Most of the Baryons in Galaxies

JOEL N BREGMAN (LSA Astronomy)
\$57,300 07/24/08 - 07/23/09

The Baryons Content of the Most Massive Spiral Galaxy

JOEL N BREGMAN (LSA Astronomy)
\$23,844 09/01/08 - 08/31/09

Large Scale Metal Enrichment Mechanisms in Abell 496

RENATO A DUPKE (LSA Astronomy)
\$17,441 09/02/08 - 09/01/09

Optimization of an ECR Plasma as a Source for Electric Propulsion Systems

JOHN EDISON FOSTER (Nuclear Eng & Radiological Sci)
\$30,000 09/01/08 - 08/31/09

Measuring Neutron Star Masses Using Broad Iron Lines and kHzQPOs

JON MATTHEW MILLER (LSA Astronomy)
\$22,238 09/02/08 - 09/01/09

Uncovering Variable Quiescent Emission in the Neutron Star Cen X-4

JON MATTHEW MILLER (LSA Astronomy)
\$30,211 03/01/09 - 02/28/10

National Association for Chronic Disease Directors

Michigan Lupus Registry
WILLIAM J MCCUNE (Int Med-Rheumatology)
With EMILY CATHERINE SOMERS (Int Med-Rheumatology)
\$93,750 04/01/08 - 06/30/09

National Bureau of Economic Research

SHARE-Life 2007-2009
BETH-ELLEN PENNELL (Survey Research Organization)
\$228,730 04/01/08 - 07/31/09

National Football League

Retired NFL Player's Survey
DAVID R WEIR (SRC-Hrs)
\$550,315 08/01/08 - 03/31/09

National Kidney Foundation

Role of Cofilin in Podocyte Actin Cytoskeleton Dynamics
LAWRENCE B HOLZMAN (Int Med-Nephrology)
\$100,000 07/01/08 - 06/30/10

National Pancreas Foundation

Neoplasia Detection in Pancreatic Mass Lesions
Using Tissue Optical Spectroscopy

JAMES MICHAEL SCHEIMAN (Int
Med-Gastroenterology)

With MARY-ANN MYCEK
(Biomedical Engineering)

\$50,000 09/01/08 - 08/31/09

National Science Foundation

Prompt Optical Observations of Gamma-Ray
Bursts and Other Energetic Transients with
ROTSE-III

CARL W AKERLOF (LSA Physics)

With TIMOTHY A MCKAY (LSA
Physics)

\$364,993 09/01/08 - 08/31/11

Quantitative Social Science Digital Library
Pathway (QSSDL)

GEORGE ALTER (ICPSR-Archival
Development)

With WILLIAM H FREY (Pop
Studies-Research)

\$2,548,838 11/01/08 - 10/31/11

Sacred Values and Biological Antecedents of
Political Conflict

SCOTT ATRAN (RCGD-Rsrch Cntr for
Grp Dyn)

\$1,249,941 10/15/08 - 09/30/11

Ct-L: CLEANSE: Cross-Layer Large-Scale
Efficient Analysis of Network Activities to Secure
the Internet

MICHAEL DONALD BAILEY (CoE
EECS-Ssrl)

With FARNAM JAHANIAN (CoE
EECS-Ssrl)

\$281,000 10/01/08 - 09/30/12

University of Michigan Comprehensive Ethics
Training Program in Basic and Social Sciences
Engineering

KATE F BARALD (Biomedical
Engineering)

With MYRON P GUTMANN
(ICPSR); DOUGLAS C NOLL
(Biomedical Engineering)

\$300,000 09/01/08 - 08/31/11

Teaching Mathematical Knowledge for
Teaching(K-8): Adapting Local Materials for Use
in Diverse Institutions and Settings

HYMAN BASS (SOE-Educational
Studies)

With LAURIE ANN SLEEP (SOE-
Educational Studies); MARK
HOOVER THAMES (SOE-
Educational Studies)

\$499,822 01/01/09 - 12/31/11

Doctoral Dissertation Research: Effects of US
Immigration on Brazilian Return Migrants' Racial
Conceptions

SARAH ANDREA BURGARD (LSA
Sociology)

\$7,500 09/15/08 - 08/31/09

IRADS: Center for the Study of Black Youth in
Context (CSBYC)

TABBYE MARIA CHAVOUS (SOE-
CPEP)

With RICHARD D GONZALEZ
(Psychiatry Department); ROBERT
JEFFRIES JAGERS (SOE-CPEP);
CARLA O'CONNOR (SOE-
Educational Studies); STEPHANIE J
ROWLEY (Psychiatry Department);
ROBERT M SELLERS (Psychiatry
Department)

\$2,493,104 10/01/08 - 09/30/13

Second Panel Study of Entrepreneurial Dynamics:
36, 48 & 60 Month Follow-ups

RICHARD T CURTIN (SRC-Surveys of
Consumers)

\$301,965 09/15/08 - 08/31/11

IRADS: Collaborative on the Analyses of
Pathways from Childhood to Adulthood

PAMELA DAVIS-KEAN (RCGD-
Achievement Research)

With ERIC F DUBOW (RCGD-
Aggression Research); L ROWELL
HUESMANN (RCGD-Aggression
Research)

\$1,699,999 09/01/08 - 08/31/13

Collaborative Research: AOC: Monitoring, Modeling and Memory: Dynamics of Data and Knowledge in Scientific Cyberinfrastructures
PAUL N EDWARDS (School of Information)
With THOMAS A FINHOLT (School of Information); STEVEN J JACKSON (School of Information); DAVID RIBES (School of Information)
\$692,338 09/01/08 - 09/30/11

Collaborative Research: Agricultural Antibiotic and Human Health: A Multiscale Ecological Approach to the Development and Spread of Antibiotic Resistance
JOSEPH NEIL EISENBERG (Epidemiology Department)
With BETSY FOXMAN (Biostatistics Department); CARL F MARRS (Epidemiology Department); LIXIN ZHANG (Epidemiology Department)
\$1,858,484 09/01/08 - 08/31/12

Project IBORC: Interaction Between Building and Occupant Responses During Collapse
SHERIF EL-TAWIL (Civil & Environmental Engr)
\$405,000 10/01/08 - 09/30/11

Second Young Investigators Summer Research Institute of the Consortium for the Science Socio-Technical Systems
THOMAS A FINHOLT (SI Crew)
\$84,876 11/01/08 - 10/31/09

Generic Language in Development
SUSAN A GELMAN (LSA Psychology)
\$304,060 07/01/08 - 08/31/11

Collaborative Research: Acoustic Properties, Listener Perceptions, and Outcomes of Interaction Between Survey Interviewers and Sample Persons
ROBERT M GROVES (SRC-Survey Methodology Prog)
With FREDERICK G CONRAD (SRC-Survey Methodology Prog)
\$125,780 09/15/08 - 08/31/10

Collaborative Research: An Ultra-high Resolution, Multiproxy Study of the Past 2,000 Years of Climate Change in Southern California
INGRID L HENDY (LSA Geological Sciences)
\$284,095 09/01/08 - 08/31/11

Whose Phenotype is it Anyway ? The Complex Role of Mycorrhizal Fungi in the Expression of Plant Defense
MARK D HUNTER (Sch of Nat Resources & Environ)
\$650,000 09/01/08 - 08/31/12

Neural Mechanisms of Short-Term Memory
JOHN JONIDES (LSA Psychology)
\$550,000 09/01/08 - 08/31/11

Active Interrogation Using Radiation Generated from Intense Laser Produced Electron Beams
KARL MICHAEL KRUSHELNICK (COE EECS - ECE - USL)
With ANATOLY M MAKSIMCHUK (CoE EECS-Usl); VICTOR P YANOVSKY (CoE EECS-Usl)
\$367,000 09/15/08 - 08/31/09

NSF Workshop on Unwanted Traffic
ZHUOQING MAO (COE EECS - CSE - SSRL)
\$28,000 09/15/08 - 08/31/09

Protest Psychosis: Science, Race, and the Stigma of Schizophrenia
JONATHAN MICHEL METZL (Inst/Research Women & Gender)
\$164,797 01/01/09 - 12/31/10

Brain Correlates of Early Math and Number Skills: Tracing Changes Related to Age and Instruction A Natural Experiment
FREDERICK J MORRISON (LSA Psychology)
\$128,543 09/01/08 - 08/31/11

Cutset Sampling and Processing
DAVID L NEUHOFF (CoE EECS-Cspl)
\$299,993 09/01/08 - 08/31/11

The Structure and Dynamics of Social Networks and Other Networked Systems
MARK E NEWMAN (LSA Physics)
\$150,000 09/15/08 - 08/31/11

The Spider and the Web: Inference in Ecological Networks

MERCEDES PASCUAL (LSA Ecology & Evolutionary Bio)

\$636,096 09/01/08 - 08/31/11

Intensity Modulated Radiation Therapy: Integrated Models and Algorithms

EDWIN ROMEIJN (Industrial Operations)

\$107,096 09/01/08 - 06/30/09

Collaborative Research: Gender, Race, and Identity Development in Black Youth

STEPHANIE J ROWLEY (LSA Psychology)

\$381,095 09/01/08 - 08/31/12

R&D: Developing an Empirically-Tested Learning Progression for the Transformation of Matter to Inform Curriculum, Instruction and Assessment Design

NAMSOO SHIN (SOE-Educational Studies)

With JOSEPH S KRAJCIK (SOE-Educational Studies)

\$2,569,539 09/15/08 - 08/31/12

Smith NSF IPA

ROBERT L SMITH (Industrial Operations)

\$220,662 09/29/08 - 09/28/09

NSF Supplemental Request (ASPE)

FRANK P STAFFORD (SRC-Psid)

With KATHERINE A MCGONAGLE (SRC-Psid); ROBERT F SCHOENI (SRC-Psid)

\$57,042 03/01/08 - 02/28/09

Coherent Optical Manipulation and Spectroscopy of Semiconductor Quantum Dot Spins at the Level

DUNCAN G STEEL (CoE EECS-Opt)

\$500,000 09/15/08 - 08/31/11

EFRI RESIN Preliminary Proposal: Multiscale Optimization in Infrastructures Dynamically Multirole Intermediaries: A Fundamental Framework for Sustainable and Resilient Vehicle-to-Grid Integration

JEFFREY L STEIN (Mechanical Engineering)

With ZORAN S FILIPI (Mechanical Engineering); HUEI PENG (Mechanical Engineering)

\$2,000,000 09/15/08 - 08/31/12

CAREER: Integrated Research and Education Program in Three-Dimensional Materials Science Visualization

KATSUYO S THORNTON (Materials Science & Engin.)

\$400,000 09/15/08 - 08/31/13

Implementing the "5XME" Workshop Recommendations for Transforming Mechanical Engineering Education and Research

A GALIP ULSOY (Mechanical Engineering)

With KON-WELL WANG (Mechanical Engineering)

\$49,800 01/01/09 - 12/31/10

Collaborative Research: CNC Phase I: Center for Molecular Cybernetics

NILS G WALTER (LSA Chemistry)

\$17,000 08/25/08 - 02/28/09

Spatial and Social Networks in Organizational Innovation: Supplemental Funding Request for Equipment

JEAN D WINEMAN (Coll of Arch & Urban Planning)

With GERALD F DAVIS (Ross School of Business); MICHAEL JOSEPH MCQUAID (School of Information); JUDITH SPENCER OLSON (School of Information); SOPHIA PSARRA (Coll of Arch & Urban Planning)

\$107,000 09/01/08 - 08/31/10

Support for the 6th U.S. National Combustion Meeting

MARGARET S WOOLDRIDGE (Mechanical Engineering)

\$10,000 12/01/08 - 11/30/09

LTREB: Long-Term Ecosystems Response to
Chronic Atmospheric Nitrate Deposition
DONALD R ZAK (Sch of Nat Resources
& Environ)

\$201,287 09/01/08 - 08/31/13

National Security Education Program

Establishing Arabic Flagship Program at the
University of Michigan

RAJI M RAMMUNY (LSA Near Eastern
Studies)

\$1,168,340 08/01/08 - 07/31/11

New Mexico, State of

Project IDEAL State Membership: New Mexico

JEROME JOHNSTON (RCGD-
Communication/Education)

\$12,000 07/01/08 - 06/30/09

NEXBIO Inc.

Protective Effects of Kallikrein Inhibition in
Sepsis

PETER A WARD (Pathology
Department)

\$12,621 09/17/08 - 11/30/08

Nissan Chemical Industries, Ltd

Evaluation of Polymer Materials for Nanoimprint
Lithography Application

L JAY GUO (COE EECS - ECE - SSEL)

\$30,435 09/01/08 - 12/31/08

North Carolina A & T State University

ONR Ph.D. Fellowship Program - Bowen

JAMIE DEAN PHILLIPS (COE EECS -
ECE - SSEL)

\$20,443 09/01/08 - 12/31/08

Obsessive-Compulsive Foundation, Inc.

Error-Related Negativity in Unaffected Siblings
of Youth with Obsessive-Compulsive Disorder

GREGORY L HANNA (Psychiatry Child
Services)

\$63,161 07/15/08 - 07/14/09

Olmsted Associates, Inc.

Flint Journal/Olmsted Associates, Inc,
Community Newspaper Marketing Research

JONATHAN H JAROSZ (Flint
Ctr/Environmental Rsch)

\$8,510 09/01/08 - 09/30/08

OncoMed Pharmaceuticals, Inc.

UMCC 2008.060/HUM22661/A Phase 1 Dose
Escalation Study of OMP-21M18 in Subjects with
Solid Tumors, Protocol No. M18-001

MOSHE TALPAZ (CTO-Phase 1)

\$323,063 09/05/08 - 04/30/09

Peace Corps

Strategy Contract FY09 (Peace Corps
Recruitment)

WILLIAM E NOLTING (International
Center)

\$13,605 10/01/08 - 09/30/09

Peter Gluck

Mapping Results of Genesee County Regional
Transit Plan Survey

JONATHAN H JAROSZ (Flint
Ctr/Environmental Rsch)

\$8,312 09/15/08 - 12/15/08

Plastic Surgery Educational Foundation

The Influence of Innervation on Fiber Type of
Tissue-Engineered Muscle

DAVID L BROWN (Plastic Surgery
Section)

\$5,000 08/19/08 - 08/18/09

Development of a Novel Biointegrated Peripheral
Nervous System Interface

PAUL STEPHEN CEDERNA (Plastic
Surgery Section)

\$5,000 08/01/08 - 08/01/09

Tissue Engineering of Incisional Hernia Repair
Using Acellular Myofascial Construct

WILLIAM M KUZON JR (Plastic
Surgery Section)

\$5,000 11/01/07 - 11/01/08

Princeton University

Materials Research Science and Engineering
(MRSEC) Princeton Center for Complex
Materials

STEPHEN R FORREST (CoE EECS-
Ssel)

\$30,000 03/01/06 - 08/31/09

Prostate Cancer Foundation

A Proposal to Accelerate the Treatment of Prostate Cancer Bone Metastases: Credentialing of Agents in Preclinical Models to Target the Lethal Phenotype

KENNETH J PIENTA (Int Med-Hematology/Oncology)

\$90,000 07/01/08 - 06/30/09

Qatar University

The Qatar Institute on Public Opinion (QIPO) A Multi-Year Collaboration Between Qatar University and the Institute for Social Research at the University of Michigan

MARK A TESSLER (CPS- Ctr for Political Studies)

With DAVID ANTHONY HOWELL (CPS- Ctr for Political Studies)
\$4,748,902 09/01/08 - 08/31/13

QuantumSphere, Inc.

Nanostructured Catalysts for NO_x Selective Catalytic Reduction with Reformate

LEVI T THOMPSON JR (Chemical Engineering Dept)

\$37,711 09/01/08 - 02/28/09

Rand Corporation

The Displaced New Orleans Residents Pilot Study

BETH-ELLEN PENNELL (Survey Research Organization)

\$186,773 07/01/08 - 03/31/09

Research Triangle Institute

Collection of Patient Level Data From HBsAg Screening Program

JANILLA LEE (SON-Grants)

\$4,500 06/15/08 - 03/31/09

Roswell Park Cancer Institute

Oncogene c-Myc-Dependent Pathways in Cutaneous Melanoma

DONNA S SHEWACH (Pharmacology Department)

\$26,207 05/15/08 - 11/30/08

Schwarz Biosciences

An Open-Label Extension Trial to Determine Tolerability and Efficacy of Long-Term Oral SPM 927 as Adjunctive Therapy in Patients with Partial Seizures (Protocol SP 615)

DANIELA N MINECAN (Neurology Department)

\$12,766 11/01/04 - 12/31/11

Science Applications International**Corporation SAIC**

RIDER Contract

CHARLES R MEYER (Radiology Department)

With MARK A HELVIE (Radiology Department)

\$68,380 04/20/08 - 09/19/08

Signal Innovations Group, Inc.

Supplement to: Distributed Topological Inference for ATR

ALFRED O HERO III (CoE EECS-Cspl)

\$10,000 06/01/08 - 10/31/08

Sloan, Alfred P., Foundation

Recruitment and Retention of Minority Students in Chemistry

ADAM J MATZGER (LSA Chemistry)

\$4,000 01/01/08 - 12/31/10

Smithsonian Institution

Bringing Theory Closer to Observation: Mock X-Ray Catalogue of Galaxy Clusters

AUGUST EVRARD (LSA Physics)

\$91,180 10/01/08 - 09/30/09

Sontag Foundation, The

dfezl Encodes a Novel Tumor Suppressor and Suppresses Neuroblast Self-Renewal in Drosophila

CHENG-YU LEE (Life Sciences Institute-Admin)

\$600,000 10/01/08 - 09/30/12

Southwest Research Institute

Cassini Ion and Neutral Mass Spectrometer Support Supplement

CHARLES J M EDMONSON JR (Space Physics Research Lab)

\$50,000 10/01/06 - 09/30/08

Stanford University

Multi-Scale Nonequilibrium Flow Physics
Modeling for Hypersonic Vehicle Analysis
IAIN D BOYD (Aerospace Engineering)

\$162,131 04/15/08 - 04/14/09

The Stanford Cancer Genome Characterization
Center

JUN LI (Human Genetics Department)

\$20,573 10/17/07 - 03/31/08

State, Department of

The Professional Mentoring and Networking
Program for Women in Engineering

JOHN JOSEPH CRISTIANO (Dbn
College of Eng-CEEP)

With SUBRATA SENGUPTA (Dbn
College of Eng-CEEP)

\$349,305 09/01/08 - 08/31/10

TargeGen, Inc.

Amendment: UMCC 2007.141: A Phase 1, Open-
label, Dose-escalation Study Evaluating the
Safety, Tolerability, Pharmacokinetics, and
Pharmacodynamics of Orally Administered
TG101348 in Patients with Primary Post-
polycythemiavera, or Post Essential
Thrombocytopenia

MOSHE TALPAZ (CTO-Phase 1)

\$22,392 04/08/08 - 09/30/09

Taylor & Francis Group, LLC

Sensory Marketing Conference (June 2008) &
book

ARADHNA J KRISHNA (ROSS SCH
Marketing)

\$2,000 07/03/08 - 12/30/09

The Children's Tumor Foundation

Tumor Initiating Cells in Malignant Peripheral
Nervous System Tumors

SEAN MORRISON (Life Sciences
Institute-Admin)

\$97,500 07/01/08 - 06/30/10

**Transportation, Department of-Federal Motor
Carrier Safety Administration**

Collection, Analysis and Evaluation of CMV
Safety Data

JOHN WOODROOFFE (UMTRI-Transp.
Safety Analysis)

With DANIEL F BLOWER (UMTRI-
Transp. Safety Analysis); PAUL ERIC

GREEN (UMTRI-Transp. Safety
Analysis); OLIVER A PAGE

(UMTRI-Transp. Safety Analysis)

\$850,000 09/30/08 - 09/29/11

Transportation, Department of-Other

University Transportation Centers Program 2008
Award

DAVID W EBY (UMTRI-Social & Behav
Analysis)

With C RAYMOND BINGHAM
(UMTRI-Social & Behav Analysis);

DANIEL F BLOWER (UMTRI-
Transp. Safety Analysis); TIMOTHY J

GORDON (UMTRI-Engineering
Research); PAUL A GREEN

(UMTRI-Human Factors); WALTER
S MCMANUS (UMTRI-Automotive

Analysis Div.); LAWRENCE W
SCHNEIDER (UMTRI-Biosciences);

PETER FRANK SWEATMAN
(UMTRI-Administration / Library)

\$843,000 08/01/08 - 09/30/11

TRW Foundation

A Real-time Vision System for Traffic Sign
Detection and Recognition Phase II

YI LU MURPHEY (Dbn Col of Eng-
Electric & Comp)

\$30,000 09/15/08 - 08/31/10

TRW, Inc.

Determination of Elastic Constants of Brake Pad
Material Using Vibration Data

CHUNHUI MEI (Dbn Coll of Eng-
Mechanical Eng)

\$20,000 09/01/08 - 08/31/10

University of California - San Francisco

ITN034AI: A Randomized, Double-blind, Controlled, Phase II Multicenter Trial of CTLA4Ig (Abatacept) Plus Cyclophosphamide vs Cyclophosphamide Alone in the Treatment of Lupus Nephritis

WILLIAM J MCCUNE (Int Med-Rheumatology)

With PATRICIA CAGNOLI (Int Med-Rheumatology); WENDY E

MARDER (Int Med-Rheumatology)

\$18,880 01/01/08 - 10/31/08

University of Kansas

SEED Impact Assessment Survey

TRINA R SHANKS (School of Social Work)

\$15,000 09/20/07 - 09/19/09

University of Minnesota

Recharge: Animal Phenotyping Core Services for Univ of MN

MARTIN MYERS (MI Metabolic & Obesity Ctr)

With CHARLES BURANT (MI Metabolic & Obesity Ctr);

NATHAN R QI (MI Metabolic & Obesity Ctr)

\$1,085 03/15/08 - 03/14/09

University of Washington

National Alzheimers Coordinating Center - Year 10

SID GILMAN (Neurology Department)

\$28,900 07/01/08 - 06/30/09

Changes in Cognitive Performance in Preclinical AD: A Collaborative Analysis

KENNETH M LANGA (Int Med-General Medicine)

\$37,500 07/01/08 - 06/30/09

LV Strain Quantification from 4D

Echocardiography

DOUGLAS C NOLL (Biomedical Engineering)

\$44,134 06/01/08 - 04/30/09

USC Obstetricians and Gynecologists, Inc

Recharge: Clinical Research Assays

DANIEL S MCCONNELL (Epidemiology Department)

\$13,564 07/01/08 - 06/30/09

Varian Corporation

UM/Varian Master Research and Collaboration Agreement

MARC L KESSLER (Radiation Oncology - Ann Arbor)

\$825,000 08/01/08 - 07/31/11

Various Sponsors

Recharge: Chemistry Services

CAROL A FIERKE (LSA Chemistry)

\$476 01/01/08 - 12/31/08

Veterans Affairs, Department of

Cognitive-Motor and Neuromobility Assessments (VA Contract)

NICOLAAS BOHNEN (Radiology Department)

\$32,687 09/01/08 - 09/30/10

Striatal and Extra-Striatal Mechanisms of Falling in Parkinson's Disease

NICOLAAS BOHNEN (Radiology Department)

\$399,980 10/01/08 - 09/30/12

Evaluating a Preference-based Intervention to Increase CRC Screening

VICTOR J STRECHER (Hlth Behavior & Hlth Ed Dept)

\$159,675 07/01/08 - 03/31/12

Wayne State University

Bipolar Disorder and Schizophrenia Consortium for Psychosis Endophenotypes (B Scope)

MELVIN G MCINNIS (Psychiatry Depression Center)

With SCOTT A LANGENECKER

(Psychiatry-Neuropsychology)

\$181,750 06/01/08 - 05/31/09

Recharge: High-Throughput Screening Services

DAVID H SHERMAN (Life Sciences Institute-Admin)

\$2,431 08/01/08 - 07/31/09

Westat

CUBICIN Outcomes Registry and Experience (CORE) for the Treatment of Serious Gram-positive Infections (VERSION 5.0 - March 31, 2008)

DARYL D DEPESTEL (College of Pharmacy)

\$8,400 07/01/08 - 12/31/08

Whirlpool Corporation

ME 450 Mechanical Design - Fall 2007

STEVEN J SKERLOS (Mechanical
Engineering)

\$5,800 09/01/07 - 12/31/07