

AWARDS ESTABLISHED
Research and Other Sponsored Activities
July 1, 2011 through May 31, 2012

**Received by the Regents
June 21, 2012**

The awards detailed in this list were established July 1, 2011 through May 31, 2012. The dollar values depict the best available estimate of the funding the University should receive over the life of the award. These values may be modified as additional data become available relative to future funding prospects. These modifications are not reported in the attached list. As a result, the dollar values of awards presented in this list will differ from the year-end totals. The full amount of an award is recorded in the year in which it was established. Often these funds are expended over several years, making comparisons between awards and expenditures somewhat misleading. Research expenditures are presented here to provide a trend line for the current fiscal year.

	Number of Awards FY 2011	Number of Awards FY 2012	% Change	Value of Awards FY 2011	Value of Awards FY 2012	% Change
Total Awards Processed (May)	195	279	43.1%	\$ 42,338,365	\$ 79,596,601	88.0%
Research Awards	125	191	52.8%	\$ 36,063,798	\$ 67,930,588	88.4%
Research Training	22	15	-31.8%	\$ 3,737,877	\$ 6,485,292	73.5%
Other Sponsored Activity	48	73	52.1%	\$ 2,536,690	\$ 5,180,721	104.2%
<hr/>						
Total Awards Processed Fiscal Year to Date	2,610	2,647	1.4%	\$ 954,943,472	\$ 970,232,013	1.6%
Research Awards	1,846	1,807	-2.1%	\$ 820,296,015	\$ 865,879,285	5.6%
Research Training	142	133	-6.3%	\$ 52,135,791	\$ 39,157,505	-24.9%
Other Sponsored Activity	622	707	13.7%	\$ 82,511,666	\$ 65,195,223	-21.0%

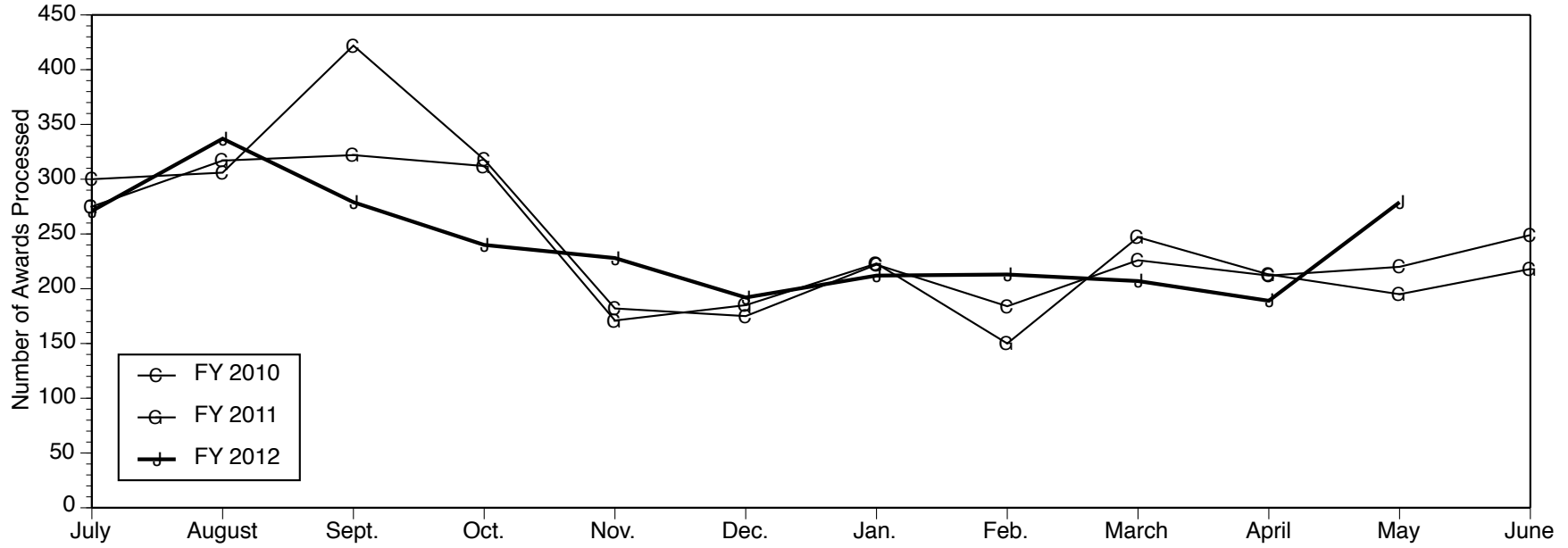
The number of total awards processed and their corresponding dollar value in May reached a two year high for the month of May reversing the previous two month decline. As a result the year-to-date number and dollar value of total awards has improved slightly when compared with the previous fiscal year. May 2012 witnessed 20 awards valued in excess of \$1.0 million for a grand total of \$42.0 million. In May 2011 there were nine such awards with a total value of \$17.7 million.

----- RESEARCH EXPENDITURES -----

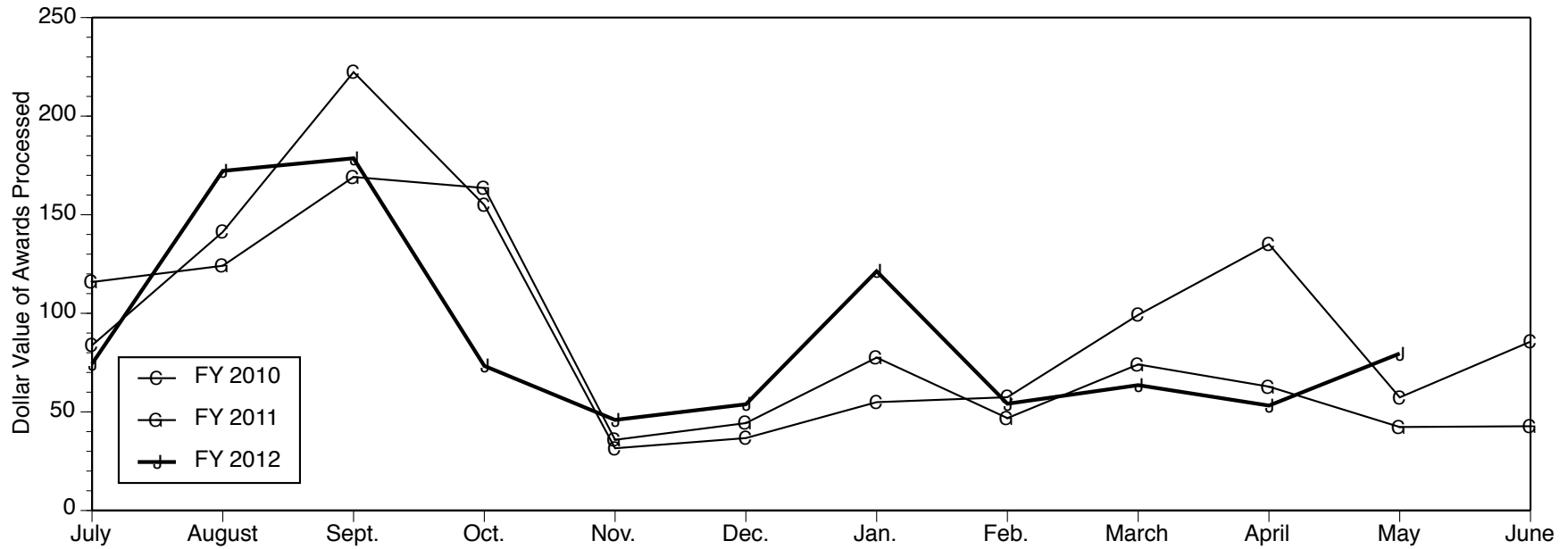
	Federal Expendable Restricted	Other Funds	Total Expenditures
April 2012	\$ 652,787,333	\$ 371,611,010	\$ 1,024,398,342
April 2011	\$ 675,259,026	\$ 324,267,086	\$ 999,526,112
Percent Change	-3.3%	14.6%	2.5%

Source: Office of Research and Sponsored Projects

Number of Awards Processed



Dollar Value of Awards Processed



Data Source: Office of Research and Sponsored Projects

AWARDS ESTABLISHED FOR RESEARCH AND OTHER SPONSORED ACTIVITIES

May 01, 2012 through May 31, 2012

The awards listed here by direct sponsor were established during the month designated in the heading above. For each award, the listing includes the award title, the principal investigator(s), the proposal administrative department, participating investigators with specified effort, the estimated amount awarded for the award period, and the estimated award period.

Abbott Laboratories

Calprotectin-Directed Humira? Maintenance Therapy, a Double-blind, Double-dummy, Randomized Controlled Trial in Crohn?s Disease (CADHUM)
Abbott IMM 10-0105

PETER DOYLE HIGGINS (Int Med-Gastroenterology)

\$420,188 05/01/2012 - 04/30/2014

Algal Scientific

Algae growth and characterization

PHILLIP E SAVAGE (Chemical Engineering Dept)

\$2,730 04/01/2012 - 08/15/2012

American Cancer Society

Impact of technology on the quantity and quality of prostate cancer care

BRENT K HOLLENBECK (Urology)

\$48,000 07/01/2012 - 06/30/2013

Rationally Selected Therapies for Genomic Targets: A Personalized Oncology Pilot Study

KATHLEEN A COONEY (Int Med-Hematology/Oncology)

\$729,000 07/01/2012 - 06/30/2017

Improving Rectal Cancer Surgery Through Regional Collaboration

SAMANTHA K HENDREN (GSA - Colorectal Surgery (COL))

with NANCY J BIRKMEYER

\$728,000 07/01/2012 - 06/30/2017

American College of Rheumatology Research & Education Foundation

Neutrophil extracellular traps in the pathogenesis of rheumatoid arthritis

MARIANA J KAPLAN (Int Med-Rheumatology)

with ALISON GIZINSKI

\$75,000 07/01/2012 - 06/30/2013

American College of Surgeons

Development of an Artificial Placenta for Premature Infants

GEORGE B MYCHALISKA (Pediatric Surgery Section)

\$30,000 07/01/2012 - 06/30/2013

American Heart Association, Midwest Affiliate

Mature Smooth Muscle Protein Expression in Intimal Hyperplasia of CADASIL

MICHAEL M WANG (Neurology Department)

\$4,000 06/01/2012 - 08/31/2012

American Institute for Research

MDE Statewide System of Support: Study of Persistently Improving Schools

DIANE MASSELL (SOE-Educational Studies)

\$75,000 03/01/2012 - 09/30/2012

American Liver Foundation

Protective role of Sestrins against metabolic pathologies in liver

JUN HEE LEE (Molec & Integrative Physiology)

\$225,000 07/01/2012 - 06/30/2015

American Pancreatic Association (APA)

Implementation of a Pancreas Knowledge Base

JOHN ANDREW WILLIAMS (Molec & Integrative Physiology)

\$5,000 05/01/2012 - 04/30/2013

American Partnership for Eosinophilic Disorders (APED)

Patient and Family Web Based Education Module for the American Partnership for Eosinophilic Disorders and the University of Michigan Center for Managing Chronic Disease

HARVEY L LEO (Hlth Behavior & Hlth Ed Dept)

\$84,000 04/01/2012 - 03/31/2013

American Physiological Society

APS/NIDDK Short Term Education Program for Underrepresented Persons (STEP-UP)

RICHARD AUCHUS (Metabolism, Endo & Diabetes)

\$500 05/01/2012 - 08/31/2012

American Society of Hematology

Regulation of Gene Expression by NOTCH1 and ZMIZ1 in T-cell Leukemia

MARK CHIANG (Int Med-Hematology/Oncology)

\$5,000 07/01/2012 - 06/30/2013

American Society of Plant Biologists (ASPB)

KOR2, a membrane-localized b-(1-4)-endoglucanase, and its role in cell wall synthesis in root hair cells

ERIK E NIELSEN (LSA Molec./Cell./Develop. Bio)

\$700 06/01/2012 - 08/31/2012

American Society of Regional Anesthesia and Pain Medicine (ASRA)

The Impact of Centralized Pain on the Analgesic Response to Cervical and Lumbar Facet Interventions

CHAD MICHAEL BRUMMETT (Anesthesiology Department)

\$50,000 01/01/2012 - 12/31/2014

American Sociological Association

Social Scientists and Imperial Politics: Britain, France, and Germany, 1930s-1960s

GEORGE P STEINMETZ (LSA Sociology)

\$7,000 04/01/2012 - 03/31/2014

American Thrombosis & Hemostasis Network

ATHNdata.quality.counts Award 2012

STEVEN W PIPE (Pediatrics-Hematology/Oncology)

\$18,190 02/01/2012 - 01/31/2013

Amgen, Inc.

18th Hemoglobin Switching Conference

JAMES DOUGLAS ENGEL (Cell and Developmental Biology)

\$3,000 05/01/2012 - 12/31/2012

Asbestos Relief Trust

The Reproducibility of digital x-ray and analog x-ray readings for medical surveillance in the South African mining industry

ALFRED FRANZBLAU (Environmental Health Sciences)

with ANANDA SEN

\$40,444 04/01/2011 - 09/30/2013

Association for Research Childhood Cancer (AROCC)

Functional analysis of WT1 in DNA damage response

XIAOCHUN YU (Int Med-Molecular Med&Genetics)

\$25,000 06/01/2012 - 05/31/2013

Astellas Pharma US, Inc.

A Phase 2, Open Label, Multicenter, Randomized Trial Comparing Tivozanib in Combination with mFOLFOX6 with Bevacizumab in Combination with mFOLFOX6 in Stage IV Metastatic Colorectal Cancer (mCRC) Subjects

MARWAN FAKIH (Int Med-Hematology/Oncology)

\$266,344 04/20/2012 - 04/19/2016

Asuragen, Inc.

miRNA markers to distinguish benign from malignant thyroid lesions.

THOMAS J GIORDANO (Pathology Department)

\$61,875 04/01/2012 - 10/31/2013

Battel Engineering, Inc

HVPS Fabrication Support to Battel Engineering Supplement 4

CHARLES J M EDMONSON JR (Space Physics Research Lab)

\$30,000 11/15/2008 - 09/30/2012

Battelle Memorial Institute

ENGINEERING ASSESSMENT OF CURRENT AND FUTURE VEHICLE TECHNOLOGIES WITH RESPECT TO PART 570- VEHICLE IN USE INSPECTION STANDARDS

KATHLEEN DESANTIS KLINICH (UMTRI-Biosciences)

\$14,987 04/12/2012 - 07/31/2012

Beckman Foundation

Autophagy and age-related macular degeneration

DAVID N ZACKS (Ophthalmology & Visual Science)

\$100,000 07/01/2012 - 06/30/2013

Biogen Idec

JCV Antibody Program in Patients with Relapsing Multiple Sclerosis Receiving or Considering Treatment with Tysabri (r): STRATIFY-2

TIFFANY JOY BRALEY (Neurology Department)

\$34,094 10/28/2011 - 02/28/2015

Blue Cross Blue Shield of Michigan Foundation

Change in non-exercise activity thermogenesis (NEAT)

AMY ELIZABETH ROTHBERG (Metabolism, Endo & Diabetes)

\$10,000 06/25/2012 - 06/24/2013

Boeing Company, The

Boeing Company - Support of Collaborative Center in Aeronautical Sciences (CCAS)

KEN POWELL (Aerospace Engineering)

\$100,000 09/01/2011 - 08/31/2012

Boston College

Robust tools for sequence processing, variant calling, and interpretation

GONCALO ABECASIS (Biostatistics Department)

with HYUN MIN KANG

\$464,627 02/01/2012 - 12/31/2015

Bristol-Myers Squibb Company

A Long-Term Follow-Up Study of Subjects Who Participated in a Clinical Trial in which BMS-650032 and/or BMS-790052 was Administered for the treatment of Chronic Hepatitis C

ANNA SUK-FONG LOK (Int Med-Gastroenterology)

\$44,549 04/05/2012 - 06/14/2016

Britax Child Safety, Inc

Improving Child Safety Seat Performance through Finite Element Simulations

JINGWEN HU (UMTRI-Biosciences)

with MATTHEW PAUL REED

\$69,760 01/16/2012 - 06/15/2012

Burroughs Wellcome Fund

High-Speed Imaging of Drug Delivery via Acoustic Droplet Vaporization

OLIVER DANIEL KRIPFGANS (Department of Radiology)

\$5,000 05/28/2012 - 07/31/2013

Pharmacogenomics of hypertension

RICHARD AUCHUS (Metabolism, Endo & Diabetes)

\$61,830 08/01/2011 - 06/30/2012

Butler Hospital

Marijuana and Sleep in Young Adults

KIRK J BROWER (Psych Substance Abuse)

with DEIRDRE ANN CONROY

\$33,000 02/01/2012 - 01/31/2013

Cardiovascular Clinical Studies, LLC

A Prospective Randomized Double Blinded Placebo Controlled Phase II Trial of Intra-coronary Infusion of AMR-001, a Bone Marrow Derived Autologous CD34+ Selected Cell Product, in Patients with Acute Myocardial Infarction

HITINDER SINGH GURM (Int Med-Cardiology)

with GISELA C MUELLER

JAMES CORBETT

JOHN M MAGENAU

\$232,663 05/30/2012 - 03/30/2015

Carollo Engineers, A Professional Corporation

Engineered Biofiltration: Enhancing Hydraulic and Water Treatment Performance

LUTGARDE M RASKIN (Civil & Environmental Engr)

with AMEET JOHN PINTO

\$56,532 01/15/2011 - 12/31/2012

Catalyst Foundation

Single-Chip Closed-Loop Deep-Brain Stimulation for Treatment of Parkinson's Disease

MICHAEL FLYNN (COE EECS - ECE - SSEL)

with DARYL R KIPKE

\$15,000 09/01/2011 - 08/31/2012

Central Michigan University Research Corporation (CMU-RC)

Technology and Commercialization Assistance Program (TCA)

LAWRENCE ALYN MOLNAR (IRLEE)

\$200,000 05/01/2012 - 12/31/2013

CHARGE Syndrome Foundation, Inc.

Investigating the role of Chd7 in neural crest lineage cells

ADAM BARNETT STEIN (Int Med-Cardiology)

ELIZABETH A HURD (Int Med-Cardiology)

\$25,000 05/01/2012 - 04/30/2013

Cincinnati Children's Hospital Medical Center

Do biochemical, hematopoietic, and stool biomarkers predict low cardiac index in patients with Fontan physiology

ADAM L DORFMAN (Pediatrics-Cardiology)

\$10,656 02/15/2012 - 12/31/2012

Clark Associates, Inc

A City of Detroit Substance Abuse Prevention, Treatment & Recovery Needs Assessment

JORGE DELVA (School of Social Work)

with BRIAN E PERRON

\$185,272 05/01/2012 - 04/30/2013

Commerce, Department of-National Oceanic and Atmospheric Administration

Modeling Nutrient and Bacterial Transport in Regional Great Lakes Watersheds using a Physically-Based, Distributed Hydrologic Model

ALLEN BURTON (SNRE CILER)

\$52,997 01/01/2012 - 10/31/2012

Community Foundation for Southeastern Michigan

CFSEM 2011 - Many Voices at UMMA

JOSEPH G ROSA (General Museum)

\$50,000 03/22/2012 - 03/21/2013

Cornell University

NNIN 2012: Summer Interns

KHALIL NAJAFI (COE EECS - ECE - SSEL)

\$45,000 03/01/2012 - 12/31/2012

Covidien Surgical Devices

Tyco/Covidien-Sponsored Global Health Design Track in China

KATHLEEN HELEN SIENKO (Mechanical Engineering)

\$196,788 03/01/2012 - 04/30/2013

Crown Equipment

Crown Equipment Health Management Program

DEE W EDINGTON (Health Management Research Ctr)

LOUIS TZE-CHING YEN (Health Management Research Ctr)

\$105,000 08/01/2012 - 07/31/2015

Defense, Department of-Air Force, Department of the

Random matrix theoretic approaches to sensor fusion for sensing and surveillance in highly cluttered environments

RAJESH RAO NADAKUDITI (COE EECS - ECE - Cspl)

\$359,284 05/15/2012 - 05/14/2015

Quantum Photonic in Hybrid Cavity Systems with Strong Matter-Light Couplings

HUI DENG (LSA Physics)

\$393,064 07/01/2012 - 06/30/2015

Electrically-generated spin polarization in non-magnetic semiconductors

VANESSA SIH (LSA Physics)

\$361,116 07/01/2012 - 06/30/2015

Utilizing Probability Distribution Functions and Ensembles to Forecast Ionospheric and Thermosphere Space Weather

AARON JAMES RIDLEY (Atm, Oceanic & Space Sci.)

\$408,993 06/01/2012 - 05/31/2015

Defense, Department of-Army, Department of the

7.4 Polymer Chemistry - New Microstructures for Old Monomers: Syntheses of Gradient Pi-Conjugated Copolymers

ANNE JENNIFER MCNEIL (LSA Chemistry)

\$200,000 06/01/2012 - 05/31/2013

Defense, Department of-Defense Threat Reduction Agency

Experimental design of affinity-graded surfaces for tethered capture and directed surface diffusion

JOERG LAHANN (Chemical Engineering Dept)

\$609,180 06/01/2012 - 05/31/2017

Defense, Department of-Navy, Department of the

Strategies for Developing Sensors Based on Molecular Gelation and Their Application in Explosives Detection

ANNE JENNIFER MCNEIL (LSA Chemistry)

\$185,014 07/01/2012 - 08/30/2013

Electrical Spin Amplification and Filtering for Semiconductor Spintronics

VANESSA SIH (LSA Physics)

\$547,029 04/01/2012 - 03/31/2015

Delta Dental Fund

Periodontal Disease Prevention Study - Amendment 2

WILLIAM V GIANNOBILE (DENT Periodontics and Oral Med)

with THOMAS M BRAUN

\$132,232 08/01/2011 - 07/31/2012

Denso Corporation

CVPC Industry Alliance -Various Sponsor Program/Denso

STEVE UNDERWOOD (Dbn College of Eng-CEEP)

\$5,000 07/01/2012 - 06/30/2013

Dermatology Foundation

Reversal of Aged Skin Appearance by Enhancing Structural Support with Cross-Linked Hyaluronic Acid

GARY J FISHER (Dermatology Department)

\$55,000 07/01/2012 - 06/30/2013

DMG Dental Materials

Radiographic Progression of Infiltrated Caries Lesions in-vivo

MATHILDE C PETERS (DENTCariology,Restor Sci &Endo)

\$106,687 11/01/2011 - 12/31/2014

Dreyfus, Camille and Henry, Foundation, Inc.

Camille Dreyfus Teacher-Scholar Award

ANNE JENNIFER MCNEIL (LSA Chemistry)

\$75,000 09/01/2012 - 08/31/2017

Duke University

Safety and Pharmacokinetics of Multiple Dose Lisinopril in Pediatric Kidney Transplant Recipients

DEBBIE GIPSON (Pediatrics-Nephrology)

\$35,000 05/11/2012 - 08/21/2013

Earhart Foundation

Research Fellowships at the Clements Library

JONATHAN KEVIN GRAFFAGNINO (Clements Library)

\$50,000 01/01/2012 - 12/31/2012

Energy, Department of

Precision Spectrophotometric Calibration System for Dark Energy Instruments

MICHAEL S G SCHUBNELL (LSA Physics)

\$75,000 05/01/2012 - 03/31/2013

Proposal to Study the Properties and Interactions of Elementary Particles FY 2012-2015

DANTE ERIC AMIDEI (LSA Physics)

with AARON THOMAS PIERCE

AUGUST EVRARD

BING ZHOU

DAVID W GERDES

DRAGAN HUTERER

FINN LARSEN

GORDON L KANE

GREGORY TARLE

HOMER A NEAL

JAMES T LIU

JIANMING QIAN

KATHERINE FREESE

LEOPOLDO A PANDO ZAYAS

MYRON K CAMPBELL

RUDOLF P THUN

TIMOTHY A MCKAY

\$9,794,000 05/01/2012 - 03/31/2015

Epsilon Imaging, Inc

Radiofrequency-based Speckle Tracking Echocardiography to Evaluate Diastolic Function

THEODORE J KOLIAS (Int Med-Cardiology)

with PETER HAGAN

\$34,611 01/01/2012 - 05/31/2012

Florida State University

Placebo Controlled Trial of Sertraline and IPT for Postpartum Depression

CATHERINE A SPINO (Biostatistics Department)

\$60,382 09/01/2011 - 05/31/2012

Ford Motor Company

Multi-Physics Model for Squeeze Film Flow

NIKOLAOS D KATOPODES (Civil & Environmental Engr)

\$30,000 09/01/2012 - 08/31/2015

Mass-Compensated Vehicle Controls Research URP II

KON-WELL WANG (Mechanical Engineering)

\$40,000 05/01/2012 - 04/30/2022

URP: Real-time Optimal Control of Powershift Transmission Launch and Shifts

ILYA VLADIMIR KOLMANOVSKY (Aerospace Engineering)

\$40,000 09/01/2012 - 08/31/2015

Foundation for Anesthesia Education and Research

FAER 2012 Student Anesthesia Research Fellowship (MSARF)

RALPH LYDIC (Anesthesiology Department)

\$6,200 03/20/2012 - 03/19/2013

Genentech, Inc.

OBSERVATIONAL MULTICENTER STUDY IN PATIENTS WITH CROHN'S DISEASE FOR CHARACTERIZATION OF MAGNETIC RESONANCE ENTEROGRAPHY ASSAYS FOR ASSESSMENT OF DISEASE ACTIVITY

PETER DOYLE HIGGINS (Int Med-Gastroenterology)

\$80,119 04/26/2012 - 03/31/2013

General Motors Company

Assessing Potential Benefits of Adaptive Restraints

KATHLEEN DESANTIS KLINICH (UMTRI-Biosciences)

with CAROL ANN FLANNAGAN
JONATHAN DAVID RUPP

\$50,241 05/01/2012 - 09/30/2012

Quality Prediction and Control for Battery Joining (Continuation)-Jack Hu

JACK HU (ME GM)

\$270,000 04/20/2012 - 12/31/2012

Gentium

Retrospective, Secondary Analysis of Six Subjects Treated with Defibrotide under an Earlier Trial, umcc #2006.123 (HUM00010277)

CARRIE L KITKO (Pediatrics-Hematology/Oncology)

\$4,000 05/11/2012 - 07/31/2012

Graham Foundation

Imaginary Apparatus: Film Production and Urban Planning in New York City: 1966 - 1975

MCLAIN CLUTTER (Coll of Arch & Urban Planning)

\$3,500 05/01/2012 - 04/30/2013

Great Lakes Fishery Commission

EVALUATING ADULT SEA LAMPREY BEHAVIOR AT TRAPS USING VIDEO

HEATHER ANN DAWSON (Flint Biology)

\$4,253 01/01/2012 - 12/31/2012

Great Lakes Fishery Trust

Great Lakes Reporting Project

TAMAR R CHARNEY (Michigan Radio)

\$35,000 04/24/2012 - 03/31/2014

Gruenenthal GmbH

Effects of Intravenous Administered Novel Compounds in Monkeys

MEI-CHUAN KO (Pharmacology Department)

\$32,000 04/27/2012 - 04/26/2013

Health and Human Services, Department of-Food and Drug Administration

Reprocessing of Reusable Devices: Researching Quality Assurance Methods for Cleaning Verification in Healthcare Facilities

DARRELL A CAMPBELL JR (UMH Med Cntr Risk Mgt)

with JAHAN AZIZI

\$161,145 04/23/2012 - 01/31/2013

Health and Human Services, Department of-National Institutes of Health

Intergenerational Family Transfers of Time and Money in the PSID

SUZANNE MARIE BIANCHI (SRC-Psid)

with EMILY ELISABETH WIEMERS
KATHERINE A MCGONAGLE
ROBERT F SCHOENI

\$3,140,911 05/01/2012 - 04/30/2017

The Role of the Exocyst Complex in Insulin Regulated Glucose Transport

ALAN R SALTIEL (Life Sciences Institute-Admin)

\$1,370,696 06/01/2012 - 05/31/2016

Vision Research Training Program

PETER F HITCHCOCK (Ophthalmology & Visual Science)

\$963,705 09/01/2012 - 08/31/2017

Training Program in Organogenesis

DEBORAH L GUMUCIO (Center for Organogenesis)

with DENEEN MARIE WELLIK

\$1,728,065 05/01/2012 - 04/30/2017

Postdoctoral Training in the Biology of Drug Abuse

JOHN R TRAYNOR (Pharmacology Department)

\$1,680,639 07/01/2012 - 06/30/2017

Climate change and health: residential energy-efficiency for comfort and equity

MARIE SYLVIA O'NEILL (Environmental Health Sciences)

with LARISSA SUSAN LARSEN
RICHARD B ROOD
VERONICA JANILETH BERROCAL

\$421,613 05/17/2012 - 04/30/2014

Function of epithelial-mesenchymal transition during pulmonary fibrosis

KEVIN K KIM (Int Med-Pulm./Critical Care)

\$1,943,750 05/15/2012 - 03/31/2017

Structure and Engineering of Natural Product Cytochrome P450 Enzymes

DAVID H SHERMAN (Life Sciences Institute-Admin)
JOHN MONTGOMERY (Life Sciences Institute-Admin)

\$1,696,048 04/15/2012 - 01/31/2016

Etanercept: a Mechanistic Probe of Central Mu-Opioid Dysregulation in Pain States

JON K ZUBIETA (Psychiatry Depression Center)

\$351,000 05/15/2012 - 04/30/2014

Life Course Socioeconomics, Acculturation, & Type-2 Diabetes Risk Among Latinos

ALLISON ELIZABETH AIELLO (Epidemiology Department)

with ANA V DIEZ ROUX
ERIN MARCELLA REES CLAYTON
TRIVELLORE E RAGHUNATHAN

\$2,484,123 05/01/2012 - 04/30/2016

Tailoring Messages to Promote Healthy Eating and Physical Activity for African American Men

DEREK GRIFFITH (Hlth Behavior & Hlth Ed Dept)

with KENNETH RESNICOW
MELISSA A VALERIO
VICTOR J STRECHER

\$427,625 05/01/2012 - 06/30/2012

Serum Glyco-Markers of Early Hepatocellular Carcinoma Using a Mass Spec Approach

DAVID M LUBMAN (Surgery Department)

with JORGE A MARRERO
KERBY A SHEDDEN

\$1,471,875 05/01/2012 - 03/30/2016

Sustaining Populations and Landscapes at Risk: Adaptation in the American Grasslands

KENNETH MICHAEL SYLVESTER (ICPSR-Admin)

with GEORGE CHARLES ALTER
PAUL W RHODE
SUSAN HAUTANIEMI LEONARD

\$427,625 06/01/2012 - 03/31/2014

The University of Michigan George M. O'Brien Renal Core Center

FRANK C BROSIUS III (Int Med-Nephrology)

\$55,975 05/01/2012 - 07/31/2013

Effects on Children of Persistent Exposure to Political Violence: Follow-up

L ROWELL HUESMANN (RCGD-Aggression Research)

with ERIC F DUBOW
PAUL BOXER

\$1,144,315 07/01/2012 - 06/30/2015

Design and Testing of practical tools to Identify individuals at high risk for COPD

FERNANDO JOSE MARTINEZ (Int Med-Pulm./Critical Care)

with MEILAN K HAN

\$2,398,722 06/01/2012 - 03/31/2015

Mechanisms of Genotoxic Stress-regulated Gene Expression in Human Cells

MATS E D LJUNGMAN (Radiation Oncology - Can Bio)

with CHANDAN KUMAR
THOMAS E WILSON

\$427,625 05/01/2012 - 04/30/2014

BIQSFP for S1113

LAURENCE H BAKER (Int Med-Hem/Oncology and SWOG)

\$196,749 07/16/1981 - 12/31/2015

Transcriptomic effects of curcumin and piperine in breast stem cells

LAURA MARIE ROZEK (Environmental Health Sciences)

with MADHURI KAKARALA

\$155,500 05/01/2012 - 04/30/2014

Development and Validation of BruChase-Seq and BrUV-Seq

MATS E D LJUNGMAN (Radiation Oncology - Can Bio)

with THOMAS E WILSON

\$1,170,291 05/01/2012 - 02/28/2015

National Research Summit on Reserve Component Military Families

JOHN F GREDEEN (Psychiatry Child Services)
MICHELLE RENEE KEES (Psychiatry Child Services)

\$25,000 06/01/2012 - 05/31/2013

Analysis of Autophagosome Formation

DANIEL J KLIONSKY (Life Sciences Institute-Admin)

\$106,132 06/01/2012 - 05/31/2014

Phylogenomic epidemiology of Clostridium difficile

SETH TAYLOR WALK (Int Med-Infectious Diseases)

\$509,300 05/01/2012 - 04/30/2017

ADAM10 in Intestinal Homeostasis and Regeneration

PETER J DEMPSEY (Pediatric & Comm Diseases Dept)

\$1,521,955 07/01/2012 - 06/30/2017

Mechanisms of motor neuron toxicity in Kennedy disease

ANDREW P LIEBERMAN (Pathology Department)

with DUXIN SUN

JASON EDWARD GESTWICKI

\$1,700,780 05/15/2012 - 04/30/2017

Proteus mirabilis swarming: Initiation and role during urinary tract infection

HARRY L T MOBLEY (Microbiology and Immunology)

\$155,346 06/01/2012 - 05/31/2015

Identifying T2D Variants by DNA Sequencing in Multiethnic Samples

MICHAEL LEE BOEHNKE (Biostatistics Department)

\$16,964 09/20/2009 - 07/31/2014

Mechanisms that determine subcellular sites of HIV-1 assembly

AKIRA ONO (Microbiology and Immunology)

\$1,874,909 05/01/2012 - 04/30/2017

Skeletal Muscle Glucose Transport: Exercise and Insulin - Research Supplements to Promote Diversity in Health-Related Research

GREGORY DEAN CARTEE (School of Kinesiology)

\$90,667 05/01/2012 - 09/30/2013

Lay Public's Genetic Explanations for Type 2 Diabetes: Prevention Implications Supplement

TOBY E JAYARATNE (Hlth Behavior & Hlth Ed Dept)

\$41,049 03/05/2010 - 02/28/2013

Mechanisms of Retinal Vascular Permeability in Diabetes

DAVID ANTONETTI (Ophthalmology & Visual Science)

\$122,136 05/01/2012 - 04/30/2014

Calcins as Membrane-permeable Ligands of Ryanodine Receptors

HECTOR VALDIVIA (Int Med-Cardiology)

with CARMEN R VALDIVIA

\$1,068,879 05/01/2012 - 04/30/2015

Collaborative Applied Research Supplement NIDCD

MARJORIE ELLEN MCCULLAGH (SON-Grants)

\$39,209 06/01/2012 - 12/31/2014

Head and neck cancer: Role of NFATc2 in CALR2-mediated tumor progression

NISHA J D'SILVA (DENT Periodontics and Oral Med)

\$33,433 06/01/2012 - 05/31/2013

Differential Mapping of Posttranslational Modifications in Tumor Cells

DAVID M LUBMAN (Surgery Department)

\$89,990 08/01/2010 - 04/30/2013

The role of Tristetraprolin in head and neck cancer

NISHA J D'SILVA (DENT Oral Med/Path/Oncology)

\$12,381 06/01/2012 - 08/16/2012

CORE CENTER FOR VISION RESEARCH

BRET A HUGHES (Ophthalmology & Visual Science)

\$102,841 05/01/2011 - 06/30/2012

Heartware, Inc.

A Prospective, Randomized, Controlled, Un-Blinded, Multi-Center Clinical Trial to Evaluate the Heartware Ventricular Assist System for Destination Therapy of Advanced Heart Failure

FRANCIS D PAGANI (Cardiac Surgery)

with KEITH D AARONSON

\$350,000 10/18/2010 - 08/31/2017

Hemophilia Foundation of Michigan

Region V East 2012-2013 Cascade Hemophilia Consortium Grant proposal for Patient Assistance Project

STEVEN W PIPE (Pediatrics-Hematology/Oncology)

\$88,644 06/01/2012 - 05/31/2013

Henry Ford Health System

Encouraging Young Adults to Make Effective Nutrition Choices: MENU Gen Y Study

LAWRENCE C AN (Int Med-General Medicine)

with KENNETH RESNICOW

\$1,103,444 03/01/2012 - 02/28/2013

Hoppe Regulatory Consultants, Inc.

In Vitro Study of Diagnostic Grifols WADiana(r) Compact for ABO/Rh Grouping, Antigen Typing, Direct Antiglobulin Tests, Red Cell Antibody Detection, Identification and Compatibility Testing

ROBERTSON D DAVENPORT (Pathology Department)

\$41,118 05/16/2012 - 07/30/2012

Hutchinson S.A.

Energy Harvesting for Lead Lag Damper ? Feasibility Study

BECKY LORENZ PETERSON (COE EECS - ECE - SSEL)

KHALIL NAJAFI (COE EECS - ECE - SSEL)

\$95,527 03/01/2012 - 11/01/2012

ICON Clinical Research, Inc.

(BUTTERFLY STUDY) A double-blind, randomized, placebo-controlled, multicenter, dose-ranging study to evaluate the efficacy and safety of PF-04236921 in subject with SLE

TANIA GONZALEZ-RIVERA (Int Med-Rheumatology)

\$70,986 03/29/2012 - 03/28/2014

INC Research

A multicenter, global, randomized, doubleblind study of axitinib plus best supportive care versus placebo plus best supportive care in patients with advanced hepatocellular carcinoma following failure of one prior antiangiogenic therapy

JORGE A MARRERO (Int Med-Gastroenterology)

\$45,610 05/19/2011 - 12/31/2013

Incyte Pharmaceuticals, Inc.

A Phase 1 Open-Label, Dose-Escalation, Safety and Tolerability Study of INCB040093 in Subjects with Previously Treated B-cell Malignancies

MOSHE TALPAZ (CTO-Phase 1)

with DANIEL LEBOVIC

\$353,950 04/19/2012 - 04/18/2014

Inha University

Regio-specific Redesign of Immunosuppressive and Anticancer Polyketide Lead Compound, Tautomycin via Streptomyces Genome Engineering

DAVID H SHERMAN (Life Sciences Institute-Admin)

\$75,000 04/01/2012 - 09/25/2014

Innovative Biotherapies

Renal Replacement Therapy for Battlefield Applications

H DAVID HUMES (Int Med-Nephrology)

with BENEDICT R LUCCHESI

DALE ADAM LAUVER

\$52,494 03/29/2012 - 08/31/2012

Institute of International Education

Continuation of Establishing Arabic Flagship at the University of Michigan

MICHAEL DAVID BONNER (LSA Near Eastern Studies)

\$347,949 10/01/2011 - 05/31/2012

International Truck and Engine Corporation (NAVISTAR)

Navistar Safety Seminar

JOHN WOODROOFFE (UMTRI-Vehicle Safety Analysis)

with DANIEL F BLOWER

PAUL ERIC GREEN

\$8,000 03/07/2012 - 05/15/2012

Jaeb Center for Health Research

Genes in Diabetic Retinopathy

THOMAS GARDNER (Ophthalmology & Visual Science)

\$3,738 01/01/2012 - 12/31/2013

Pediatrics Diabetes Consortium

JOYCE M LEE (Pediatrics-Ambulatory Care Pgm)

\$1,400 04/01/2012 - 08/31/2013

Type 1 Diabetes (T1D) Exchange

JOYCE M LEE (Pediatrics-Ambulatory Care Pgm)

\$20,900 03/01/2012 - 02/28/2013

Jet Propulsion Laboratory

Hands-on Learning for Future Space Mission Architects

DARREN SHAWN MCKAGUE (Atm, Oceanic & Space Sci.)

\$22,000 04/27/2012 - 09/30/2012

Field Demonstration of a Wideband Agile Digital Microwave Radiometer

CHRISTOPHER S RUF (Space Physics Research Lab)

\$65,000 04/27/2012 - 09/30/2012

Long Duration Balloon Flights for the Support of Educational Projects

AARON JAMES RIDLEY (Atm, Oceanic & Space Sci.)

\$21,400 04/30/2012 - 09/30/2012

Development of GRIFEX Mission

JAMES W CUTLER (Aerospace Engineering)

\$220,000 05/01/2012 - 04/30/2013

Johns Hopkins University

Translational Breast Cancer Research Consortium

CATHERINE H VAN POZNAK (Int Med-Hematology/Oncology)

\$37,500 06/01/2012 - 05/31/2013

Johnson, Robert Wood, Foundation

NCIN in Flint, MI

HUEY-MING TZENG (Flint Nursing)

\$50,000 09/01/2012 - 08/31/2013

RWJ Clinical Scholars Core Program 2012-2014 ID#11613

RODNEY A HAYWARD (Int Med-General Medicine)

with ANTONIUS S TSAI

CAROLINE R RICHARDSON

EVE ASKANAS KERR

GARY L FREED

JOEL D HOWELL

LAURENCE F MCMAHON JR

MARY A ROGERS

MARY ELLEN MICHELE HEISLER

MATTHEW M DAVIS

MICHAEL VOLK

RICHARD L LICHTENSTEIN

SANJAY K SAINT

SARA L WARBER

TIMOTHY P HOFER

\$1,035,300 07/01/2012 - 06/30/2014

RWJ Clinical Scholars Program Cohort Proposal 2012-2014 #11619

RODNEY A HAYWARD (Int Med-General Medicine)

\$734,500 07/01/2012 - 06/30/2014

JSTOR

Journal Storage Project (JSTOR) - 2012

JEFFREY K MACKIE-MASON (SI School of Information)

\$209,202 01/01/2012 - 12/31/2012

Karmanos Cancer Institute

RECHARGE: Protein ID by LTQ-Oribtrap XL
Order # UM-2012-0966 to UM-2012-0967 and 1049 to 1111

KOJO SEYS JOHN ELENITOBA-JOHNSON (Pathology Department)

with VENKATESHA BASRUR

\$8,634 01/25/2012 - 02/16/2012

RECHARGE: Protein ID by LTQ-Oribtrap XL
Order # UM-2012-1293 to UM-2012-1351

KOJO SEYS JOHN ELENITOBA-JOHNSON (Pathology Department)

with VENKATESHA BASRUR

\$8,355 03/21/2012 - 04/06/2012

Kellogg, W. K., Foundation

Detroit Center for Family Advocacy: An Innovative Model to Reduce the Number of Children in Foster Care

VIVEK S SANKARAN (Law Clinical Activity)

\$60,000 01/01/2012 - 01/31/2013

Building A Better Michigan for the Next Generation

TAMAR R CHARNEY (Michigan Radio)

\$995,707 05/01/2012 - 04/30/2015

Kiwanis Club of Ann Arbor

Kiwanis 2011 Proposal for Developer

STEPHEN J STEFANAC (DENT Patient Services)

\$2,896 04/01/2012 - 03/31/2014

Lantheus Medical Imaging

Amendment to A Phase 3, Open-Label, Multicenter Study for the Assessment of Myocardial Perfusion using Positron Emission Tomography (PET) Imaging of Flurpiridaz F 18 Injection in Patients with Suspected or Known Coronary Artery Disease (CAD)

JAMES CORBETT (Department of Radiology)

with STANLEY J CHETCUTI

\$157,455 05/11/2012 - 05/10/2013

Lilly, Eli, and Company

Clinical Research Strategy Consultation

FRANK C BROSIUS III (Int Med-Nephrology)

\$26,000 05/01/2012 - 12/31/2013

A Phase 1 Study of LY2875358 in Patients with Advanced Cancer

MAHA HUSSAIN (CTO-Phase 1)

\$472,862 04/13/2012 - 04/12/2014

Clinical Research Strategy Consultation

MATTHIAS KRETZLER (Int Med-Nephrology)

\$26,000 04/30/2012 - 12/31/2013

Loeb Classical Library Foundation

The S. Omobono Project. An Archaic Sanctuary on the banks of the Tiber. (Continuation)

NICOLA TERRENATO (LSA Kelsey Museum/Archaeology)

\$18,000 06/15/2012 - 08/30/2012

Louisiana State University

Microgranular Curcumin Biomarker Trial in Head and Neck Squamous Cell Carcinoma

DEAN E BRENNER (Int Med-Hematology/Oncology)

\$12,938 05/01/2012 - 04/30/2013

MacArthur, John D. and Catherine T., Foundation

Affordable Housing, Health, and Productive Activity: A Field Experiment

TONI C ANTONUCCI (SRC-Life Course Development)

with ROBERT L KAHN

\$886,000 01/01/2012 - 12/31/2013

M.D. Anderson Cancer Center

Advancing staging and prognosis in early stage melanoma: Integration of clinicopathologic and molecular factors

MICHAEL S SABEL (GSA - Surgical Oncology (SON))

\$13,500 08/01/2011 - 07/31/2012

Medimmune, Inc.

A Phase 1, Multicenter, Open-label Study to Evaluate the Safety, Tolerability, and Pharmacokinetics of MEDI0639 in Adult Subjects with Advanced Solid Tumors

DAVID C SMITH (CTO-Phase 1)

\$369,440 04/05/2012 - 04/04/2017

Medtronic, Inc.

Medtronic Contour 3D Tricuspid Annuloplasty Ring Post-Market Clinical Trial

STEVEN F BOLLING (Cardiac Surgery)

with MATTHEW AUGUSTIN ROMANO

\$199,350 05/11/2012 - 02/28/2014

Medtronic - Sponsored Global Health Design Track in China

KATHLEEN HELEN SIENKO (Mechanical Engineering)

\$86,324 05/01/2012 - 12/31/2012

Michigan, State of, Community Health, Department of

MDCH - MI Asthma Call-back Survey-Epidemiology Internship

PHYLLIS DENISE MEADOWS (Sch of Public Hlth-Dean's Ofc)

\$5,460 05/01/2012 - 09/30/2012

2012 Summer Immunization Student Intern

MATTHEW L BOULTON (Epidemiology Department)

\$9,113 05/01/2012 - 09/30/2012

Michigan, State of, Natural Resources and Environment (MDNRE)

Refinement of the Aquatic Portion of the Wildlife Action Plan & Development of Supporting River Management Tools

KEVIN ELDON WEHRLY (Sch of Nat Resources & Environ)

\$83,700 10/01/2011 - 09/30/2012

Michigan State University

The Scientific Virtues: Planning Grant for a National Survey of the Ethical Perceptions of Scientific Leaders

JON D MILLER (CPS-Research)

\$25,092 04/05/2012 - 10/05/2012

Mixon/Hill, Inc

Advanced Applications of IntelliDrive Data Use Analysis and Processing 2 (DUAP 2)

RALPH L ROBINSON (UMTRI - ITS Integration)

with DAVID JAMES LEBLANC

JOHN WOODROOFFE

\$989,796 04/17/2012 - 06/30/2014

Mott Community College

Smart Teachers as Role Models - STAR Year 5

ROBERT W BARNETT (Flint Sch of Ed and Human Svcs)

\$25,306 11/01/2011 - 10/31/2012

Muskegon River Watershed Assembly

Eco-hydrologic Evaluation of Removing the Higgins Lake-Level Control Structure Project

MIKE WILEY (Sch of Nat Resources & Environ)

\$18,225 04/15/2012 - 12/01/2014

National Academy of Sciences

Development of a Comprehensive Approach for Serious Traffic Crash Injury Measurement and Reporting Systems

CAROL ANN FLANNAGAN (UMTRI-Data Center)

with JONATHAN DAVID RUPP

\$449,986 05/22/2012 - 05/12/2014

National Aeronautics and Space Administration

Do Accretion-Ejection Lags Scale with Black Hole Mass?

JON MATTHEW MILLER (LSA Astronomy)

\$19,000 04/01/2012 - 03/31/2013

Galactic Fountains, Galaxy Infall, and the Dark Matter Content of NGC 891

JOEL N BREGMAN (LSA Astronomy)

\$98,489 04/01/2012 - 03/31/2013

Study of the Dusty-Gas Enceladus Plumes and Local Atmosphere

MICHAEL R COMBI (Space Physics Research Lab)

with VALERIY M TENISHEV

\$362,284 04/01/2012 - 03/31/2015

Requesting augmentation funding to existing NASA grant NNX10AH74G

YOUXUE ZHANG (LSA Earth & Environmental Sci.)

\$24,720 01/01/2012 - 04/04/2012

National Alcohol Beverage Control Association (NABCA)

The Impact of Alcohol Regulatory Models on State Finances

ROLAND W ZULLO (IRLEE)

\$74,792 04/01/2012 - 01/31/2013

National Bureau of Economic Research

Expanding the National Health Accounts

TRIVELLORE E RAGHUNATHAN (Biostatistics Department)

\$47,399 02/01/2012 - 07/31/2012

National Marrow Donor Program (NMDP)

0701: A Phase II Trial of Non-Myeloablative Allogeneic Hematopoietic Stem Cell Transplantation for Patients with Relapsed Follicular Non-Hodgkin's Lymphoma Beyond First Complete Response, BMT CTN PROTOCOL #0701

LAURENCE H BAKER (Int Med-Hem/Oncology and SWOG)

\$122,100 03/15/2012 - 10/30/2015

STUDY:

0702: A Trial of Single Autologous Transplant with or without Consolidation Therapy versus Tandem Autologous Transplant with Lenalidomide Maintenance for Patients with Multiple Myeloma, BMT CTN PROTOCOL #0702.

LAURENCE H BAKER (Int Med-Hem/Oncology and SWOG)

\$171,120 03/15/2012 - 10/30/2015

National Science Foundation

Interpreting Hedgehog Signaling Gradients With Cis-Regulatory DNA: A Quantitative In Vivo/Computational Approach

SCOTT E BAROLO (Cell and Developmental Biology)

\$860,235 06/01/2012 - 05/31/2016

CAREER: Biomechanical Phenotyping of Contractile Vascular Smooth Muscle Cells

JIANPING FU (Mechanical Engineering)

\$449,115 05/15/2012 - 04/30/2017

Estimating the Economic and Scientific Impact of Federal R&D Spending by Universities

JASON D OWEN-SMITH (SRC-Seh-Price)

with FELICHISM W KABO

MARGARET C LEVENSTEIN

\$246,743 06/01/2012 - 05/31/2013

Into the heart of an epidemic: a US-Brazil Collaboration for Integrative Studies of Molecular Variation and Population Dynamics of the Amphibian Killing Fungus in Brazil

TIMOTHY Y JAMES (LSA Ecology & Evolutionary Bio)

\$54,656 05/01/2012 - 04/30/2014

NeTS: Medium: Collaborative Research: Enabling Cellular Services over Unplanned Femto-cell Deployments: From Theory to Implementation

KANG GEUN SHIN (COE EECS - CSE Division)

\$439,403 06/01/2012 - 05/31/2015

AF: Medium: Collaborative Research: Sparse Approximation: Theory and Extensions

ANNA CATHERINE GILBERT (LSA Mathematics)

with MARTIN J STRAUSS

\$603,762 07/01/2012 - 06/30/2015

SHF: Medium: Collaborative Research: 3D Integration of Heterogeneous Dies

IGOR L MARKOV (COE EECS - CSE - ACAL)

\$434,191 07/01/2012 - 06/30/2015

quantizing Schur functors

JONAH DAVID BLASIAK (LSA Mathematics)

\$128,541 07/01/2012 - 06/30/2015

SHF: Medium:Collaborative Research: Ultra-Responsive Architectures for Mobile Platforms

THOMAS F WENISCH (COE EECS - CSE - ACAL)

with KEVIN PATRICK PIPE

MARIOS C PAPAETHYMIU

\$560,000 05/01/2012 - 04/30/2016

Search for Continuous Gravitational Waves from Isolated and Binary Neutron Stars

KEITH RILES (LSA Physics)

\$980,000 07/01/2012 - 06/30/2015

NanoFlex Fluorescent Probes for Superresolution Imaging

NICHOLAS KOTOV (Chemical Engineering Dept)

\$52,247 05/10/2012 - 08/31/2012

Collaborative research: Automated and community-driven synthesis of the tree of life

STEPHEN A SMITH (LSA Ecology & Evolutionary Bio)

\$900,000 06/01/2012 - 05/31/2015

Composite Estimating Function Approaches to GeoCopula Models for Complex Spatially Correlated Data

PETER XUEKUN SONG (Biostatistics Department)

\$170,000 07/01/2012 - 06/30/2015

Doctoral Dissertation Improvement Grant: Interaction, Tradition, and Middle Woodland Monumentality at Garden Creek, North Carolina

ROBIN ANDREW BECK (LSA Anthropology Museum)

\$25,191 06/01/2012 - 05/31/2013

Collaborative Research: Rapid Response Research To Conduct Ionospheric Irregularity And Scintillation Experiments Using The Radio Aurora Explorer II

JAMES W CUTLER (Aerospace Engineering)

\$50,000 05/15/2012 - 04/30/2013

REU Supplement to MHD Duct Flow Transition, Turbulence, & Transport

OLEG ZIKANOV (Dbn Coll of Eng-Mechanical Eng)

\$6,000 05/24/2012 - 05/31/2013

I-Corps: Ultrahigh Brightness LED Luminaire Development for Commercial Applications

PC KU (COE EECS - ECE - SSEL)

\$50,000 03/15/2012 - 08/31/2012

REU Supplement: CPS:Medium:Collaborative Research:Body Area Sensor Networks: A Holistic Approach from Silicon to Users

DAVID D WENTZLOFF (COE EECS - ECE - SSEL)

\$10,200 05/24/2012 - 09/30/2013

Workshop: A roadmap for developing and implementing minimum nanomaterial characterization reporting requirements within regulatory and development communities.

ANDREW DAVID MAYNARD (Environmental Health Sciences)

\$29,500 06/01/2012 - 11/30/2012

CoE Program LSAMP Supplement

LEVI THEODORE THOMPSON (CoE Admin Sponsored Projects)

\$19,000 05/22/2012 - 09/30/2012

REU Supplement: GOALI: Dynamic response of rigid, foamed biocomposites 2012

ALAN ARGENTO (Dbn Coll of Eng-Mechanical Eng)

\$12,000 05/01/2012 - 04/30/2013

REU Site: Interdisciplinary Research Experiences for Undergraduates (REU) Program in the Structure and Function of Proteins

CHERIE REBECCA DOTSON (College of Pharmacy)

\$1,124 05/07/2012 - 02/28/2013

Request for NSF MCB funds to support participation by students and postdocs

NILS G WALTER (LSA Chemistry)

\$8,700 05/01/2012 - 04/30/2013

Research proposal for REU

GEORG A RAITHEL (LSA Physics)

\$5,000 05/17/2012 - 07/31/2012

A Workshop to Highlight the Intellectual Merit and Broader Impacts of CubeSats

AARON JAMES RIDLEY (Atm, Oceanic & Space Sci.)

with JAMES W CUTLER

\$24,389 05/01/2012 - 10/31/2012

New England Research Institute

Fontan 3 Study Biorepository

MARK WILLIAM RUSSELL (Pediatrics-Cardiology)

\$13,765 04/01/2012 - 06/30/2012

North Shore University Hospital

NIH Toolbox for Assessment of Neurological and Behavioral Function

DAVID TULSKY (Physical Medicine & Rehab Dept)

with NOELLE E CARLOZZI

\$88,979 09/02/2010 - 02/29/2012

Olympia Development Fox Office Center

Olympia Development

MARK STEVEN ROSENTRAU (School of Kinesiology)

\$89,995 04/01/2012 - 11/30/2012

Oregon State University

Improving sustainability and reducing environmental impacts of aquaculture systems in China, and South and Southeast Asia

JAMES STEPHEN DIANA (Sch of Nat Resources & Environ)

\$279,380 01/01/2012 - 09/29/2012

Otsuka America Pharmaceutical, Inc.

The Use of Tolvaptan to Prevent Renal Dysfunction in High Risk Patients with Acute Decompensated Heart Failure-Pilot Study

BARRY E BLESKE (PHARMACY Clin, Soc & Admin Sci)

with AUDREY H WU

KEITH D AARONSON

\$184,560 04/18/2012 - 12/12/2013

Pfizer, Inc.

Development of a Web-based Patient Engagement Tool for Chronic Low Back Pain (CLBP)

DANIEL J CLAUW (Anesthesiology Department)

with AFTON HASSETT
CHAD MICHAEL BRUMMETT
DAVID A WILLIAMS

\$625,000 12/21/2011 - 12/31/2012

PicoCal, Inc.

Micromachined Thermal Probes for Localized NanoManufacturing

KHALIL NAJAFI (COE EECS - ECE - WIMS - ERC)

\$60,000 05/01/2012 - 12/31/2013

PPD, Inc.

A Randomized, Placebo-controlled, Double-blind, Multicenter Phase II Trial of Intravenous GC33 at 1600 mg Q2W in Previously Treated Patients with Unresectable Advanced or Metastatic Hepatocellular Carcinoma (HCC) Protocol NP27884

JORGE A MARRERO (Int Med-Gastroenterology)

\$272,472 04/24/2012 - 06/30/2015

A PHASE II/III, MULTICENTER, RANDOMIZED, DOUBLE-BLIND, PLACEBO-CONTROLLED STUDY TO ASSESS THE EFFICACY AND SAFETY OF TOCILIZUMAB VERSUS PLACEBO IN PATIENTS WITH SYSTEMIC SCLEROSIS

DINESH KHANNA (Int Med-Rheumatology)

with ELENA SCHIOPU
\$292,399 04/26/2012 - 03/01/2015

Pratt and Whitney Aircraft

Advanced Testing Technologies for IBRs

BOGDAN EPUREANU (Mechanical Engineering)

\$107,544 01/01/2012 - 12/31/2012

PricewaterhouseCoopers LLP

PwC INquires Grant

REUVEN LEHAVY (ROSS SCH Research Support)

\$10,000 05/15/2012 - 03/31/2013

Procter and Gamble Company

P&G Incontinence Product Study

JOHN O DELANCEY (Obstetrics and Gynecology Dept)

with JAMES A ASHTON-MILLER
\$159,890 04/01/2012 - 12/31/2012

Prostate Cancer Foundation

Dissecting the role of PARP1 and DNA-PKcs in the repair of ETS-induced DNA damage

ARUL M CHINNAIYAN (Ctr fr Translational Pathology)

\$75,000 10/01/2011 - 09/30/2012

Quintiles, Inc

A Phase 3, Open-label Study to Determine the Long-Term Safety and Efficacy of Vedolizumab (MLN0002) in Patients with Ulcerative Colitis and Crohn's Disease

PETER DOYLE HIGGINS (Int Med-Gastroenterology)

\$621,490 05/01/2012 - 04/30/2019

Reliance Industries Limited

Algae liquefaction tests

PHILLIP E SAVAGE (Chemical Engineering Dept)

\$18,730 04/01/2012 - 10/15/2012

Renal Research Institute, LLC

Acute Kidney Injury in the Pediatric ICU

DEBBIE GIPSON (Pediatrics-Nephrology)

\$35,000 01/01/2012 - 12/31/2012

Research Pharmaceuticals Services Inc. (RPS)

A Phase 2/3, Double-Blind, Placebo-Controlled, Two-Part Study (Part 1 Open-Label) to Assess the Safety, Efficacy and Pharmacokinetics of Single Intravenous Doses of ASP8597 (Diannexin) in de novo Kidney Transplant Recipients

RANDALL S SUNG (Transplant Surgery (STX))

\$327,500 03/03/2008 - 05/02/2018

Research Triangle Institute

Demographic Surveys Audio CASI Response Bias Research for Collection Sensitive Information

MICK P COUPER (SRC-Survey Methodology Prog)

\$67,173 09/24/2011 - 09/28/2012

Ruth K. Broad Biomedical Research Foundation

Role of Metal Ions in Alzheimer's Disease

MI HEE LIM (Life Sciences Institute-Admin)

\$230,000 07/01/2012 - 06/30/2014

Sage, Russell, Foundation

Wealth after the Great Recession: Who Lost and Who Recovered?

FABIAN T PFEFFER (SRC-Psid)

with ROBERT F SCHOENI

SHELDON H DANZIGER

\$169,535 09/01/2012 - 08/31/2014

Sandia National Laboratories

Recyclable Transmission Line Experiments on a Linear Transformer Driver

RONALD M GILGENBACH (Nuclear Eng & Radiological Sci)

with DAVID A CHALENSKI

\$20,000 03/03/2011 - 07/31/2012

Sanofi-Aventis Pharmaceuticals

Effects of Slit Trap on Colorectal Cancer Cells

JIAN-GUO GENG (DENT Bio & Materials Science)

\$400,413 12/15/2011 - 12/14/2012

Randomized Phase 2, Open-Label study of the Efficacy and Safety of Orally Administered SAR302503 in patients with polycythemia vera (PV) or essential thrombocythemia (ET) who are resistant or intolerant to hydroxyurea (2011.116)

MOSHE TALPAZ (Int Med-Hematology/Oncology)

\$445,633 04/20/2012 - 04/19/2017

Sarcoma Alliance for Research Through Collaboration (SARC)

Database Management Service for SARC 005

THOMAS PATRICK SHANLEY (MICHR - Operations)

\$3,093 09/01/2011 - 02/29/2012

Science Applications International Corporation (SAIC)

Radar Phenomenology of Through Wall Imaging

KAMAL SARABANDI (COE EECS - ECE - Rad)

\$10,000 02/15/2008 - 04/15/2011

Seton Hall University

Effects of Undergraduate Indebtedness on Graduate School Enrollment: A Causal Investigation

PETER RILEY BAHR (SOE-CSHPE)

\$15,000 06/01/2012 - 05/31/2013

Shodor

Creating Parallel Spectral Numerical Methods Module

BENSON KIBUGI MUIITE (LSA Mathematics)

\$3,000 03/01/2012 - 02/28/2013

Sloan, Alfred P., Foundation

Role of Metal Ions in Human Neurodegenerative Diseases

MI HEE LIM (Life Sciences Institute-Admin)

\$50,000 09/15/2012 - 09/15/2014

Smithsonian Astrophysical Observatory

The Radio?X-Ray?BH-Mass Plane for the Smallest Supermassive Black Holes

KAYHAN GULTEKIN (LSA Astronomy)

\$64,904 05/03/2012 - 05/02/2013

Smithsonian Institution

An HETGS Observation of the Transient MAXI J1305-704

JON MATTHEW MILLER (LSA Astronomy)

\$13,800 05/02/2012 - 05/01/2014

Society for Applied Microbiology (SFAM)

Evaluation of the Antimicrobial and Anti-biofilm Efficacy of Essential Oils

ALEXANDER RICKARD (Epidemiology Department)

\$4,038 05/01/2012 - 07/09/2012

Spectral Sciences, Inc

Advanced Chemistry Modeling for Wake and Reentry Flows

IAIN D BOYD (Aerospace Engineering)

\$16,504 05/01/2012 - 09/30/2012

Stanford University

Magnet Alignment via Frequency Scanned Interferometry Supplemental Funding

KEITH RILES (LSA Physics)

\$11,942 03/28/2011 - 12/31/2012

State Bar of Michigan

University of Michigan Law School Low Income Taxpayer Clinic Application with the State Bar of Michigan Taxation Section

BRIDGET M MCCORMACK (Law Clinical Activity)

with NICOLE APPLEBERRY

\$2,000 05/01/2012 - 04/30/2013

ST Engineering

Personal Dead-reckoning (PDR) Systems for ST Engineering

JOHANN BORENSTEIN (Mechanical Engineering)

\$33,400 03/22/2012 - 05/31/2012

Synarc Inc

Synarc - Study 221AD103

ROBERT A KOEPPE (Department of Radiology)

\$144,100 04/01/2012 - 01/31/2014

TerraPower

Acquisition of a 3 MV Tandem Accelerator for Research and Teaching in Nuclear Science and Engineering

GARY S WAS (Nuclear Eng & Radiological Sci)

\$300,000 04/24/2012 - 02/28/2013

The American-Israeli Cooperative Enterprise (AICE)

Schusterman Postdoctoral Fellow in Israel Studies, 2012-13

DEBORAH DASH MOORE (LSA Judaic Studies)

\$40,000 09/01/2012 - 08/31/2013

The Doctors Company Foundation

Patient Safety Training at the University of Michigan

AMY ELLEN MAINVILLE COHN (CoE Center for Health Eng)

\$172,500 04/15/2012 - 05/31/2015

The Melanoma Research Foundation

Identification of predictive biomarkers in metastatic melanoma

BRUCE G REDMAN (Int Med-Hematology/Oncology)

\$90,000 04/01/2012 - 03/31/2014

Transportation, Department of-Federal Highway Administration

Safety Pilot Model Deployment - MOD 05 - Additional VAD Costs

JAMES R SAYER (UMTRI-Human Factors)

\$2,300,000 04/30/2012 - 02/17/2014

Transportation, Department of-National Highway Traffic Safety Administration-Subcontracts

Discretionary Cooperative Agreement to Support Biomechanical Research

JONATHAN DAVID RUPP (UMTRI-Biosciences)

with CAROL ANN FLANNAGAN
JINGWEN HU
KATHLEEN DESANTIS KLINICH
LAWRENCE W SCHNEIDER
MATTHEW PAUL REED

\$1,420,000 04/20/2012 - 04/19/2013

United States-India Educational Foundation(USIEF)

The joint development of a Master's degree in education for health professions faculty in the United States and India

LARRY D GRUPPEN (Med Ed/Ofc of Ed Resources&Res)

with CAREN MICHELLE STALBURG
PATRICIA BRIDGET MULLAN

\$249,989 05/01/2012 - 04/30/2015

United Way of Washtenaw County

Community Dental Center - Emergent Dental Care for the Low-Income

STEPHEN J STEFANAC (DENT Patient Services)

\$14,027 07/01/2010 - 06/30/2011

University of California - Lawrence Berkeley National Laboratory

BigBOSS Calibration System R&D

GREGORY TARLE (LSA Physics)

\$99,810 05/07/2012 - 03/31/2014

University of California-San Diego

Phase II study to evaluate the impact on biomarkers of resveratrol treatment in patients with mild to moderate Alzheimer's Disease

JUDITH L HEIDEBRINK (Neurology Department)

\$194,000 11/01/2011 - 12/31/2014

University of Maryland, The

Phase X Part 1, Evaluations of Fluorometers for use in Compliance Monitoring of Ballast Water Discharge Regulations

THOMAS H JOHNGEN (SNRE CILER)

\$75,000 04/01/2012 - 03/31/2014

2012-2013 ACT National-Scale Efforts Toward Verification and Validation of Observing Technologies

THOMAS H JOHNGEN (SNRE CILER)

\$195,000 06/01/2012 - 05/31/2013

University of Pennsylvania

A Randomized Controlled Study of Adenotonsillectomy for Childhood Sleep Apnea

RONALD DAVID CHERVIN (Neurology Department)

with BRUNO J GIORDANI
SUSAN LYNN GARETZ

\$70,458 08/01/2011 - 07/31/2012

University of Pittsburgh

Using selective protein labeling to characterize the Toxoplasma secretome in vivo

PHILIP C ANDREWS (Biological Chemistry Dept)

with ANGELA K WALKER

\$34,277 02/15/2012 - 01/31/2013

University of Southern California

Neighborhood Context, Social Relationships, and Health: Examining the Pathways

JAMES S HOUSE (SRC-Seh-House)

\$13,205 04/01/2012 - 03/31/2013

University of Toledo

RECHARGE: Protein ID by LTQ-Oribtrap XL

Order # UM-2012-1155 to UM-2012-1159

KOJO SEYS JOHN ELENITOBA-JOHNSON (Pathology Department)

with VENKATESHA BASRUR

\$650 02/28/2012 - 03/30/2012

University of Virginia

2011.042: Multicenter phase I study of imatinib, a platelet-derived growth factor receptor inhibitor, and LBH589, a histone deacetylase inhibitor, in the treatment of newly diagnosed and recurrent chordoma

RASHMI CHUGH (Int Med-Hematology/Oncology)

\$88,000 05/09/2012 - 02/11/2014

University of Washington

U of Washington sub - Energy positioning: control and economics

IAN HISKENS (COE EECS - ECE - Con)

\$253,402 03/01/2012 - 02/28/2013

Sources, Composition, and Health Effects of Coarse Particulate Matter (MESA Coarse) - Extension

SARA D ADAR (Epidemiology Department)

\$185,569 01/01/2010 - 02/28/2013

University of Wisconsin

Ryanodine Receptors, Ca²⁺ - Dependent Arrhythmias, and HCM

HECTOR VALDIVIA (Int Med-Cardiology)

\$314,206 01/01/2012 - 06/30/2012

The Great Lakes Climate Change Science and Education Systemic Network (GLCCSESN)

DONALD SCAVIA (Graham Environ. Sustain. Inst.)

\$40,637 01/01/2012 - 08/31/2012

University of Zurich

Testing Aminoglycoside Derivatives for Free-Radical Toxicity to Haircells in Organ of Corti Explants

JOCHEN H SCHACHT (Kresge Hearing Research Inst)

\$39,993 12/01/2011 - 11/30/2012

Various Sponsors

WIMS Center Member Partner - Texas Instruments, Inc. 2/11/2012 - 2/10/2013

YOGESH B GIANCHANDANI (COE EECS - ECE - WIMS - ERC)

\$50,000 02/11/2012 - 02/10/2013

Recharge: Argon Geochronology Laboratory

CHRIS MICHAEL HALL (LSA Earth & Environmental Sci.)

\$14,455 07/01/2011 - 06/30/2013

Recharge: Wheelchair Restraint Testing

LAWRENCE W SCHNEIDER (UMTRI-Biosciences)

\$32,101 03/01/2007 - 06/30/2025

Recharge: Child Restraint Testing

LAWRENCE W SCHNEIDER (UMTRI-Biosciences)

\$31,142 03/01/2007 - 06/30/2025

WIMS Center Member Partner - Ricoh Innovations, Inc. 5/1/2012 - 4/30/2013

YOGESH B GIANCHANDANI (COE EECS - ECE - WIMS - ERC)

\$50,000 05/01/2012 - 04/30/2013

WIMS Center Associate Partner - ePack, Inc. 5/8/2012 - 5/7/2013

YOGESH B GIANCHANDANI (COE EECS - ECE - WIMS - ERC)

\$6,000 05/08/2012 - 05/17/2013

Bosch Partner Agreement 6-1-12 thru 5-31-13

JEANNE P MURABITO (CoE Eng Career Resource Center)

\$10,000 06/01/2012 - 05/31/2013

Veit Youth Charitable Trust

Super Science Friday Veit Memorial Youth Trust

VAHID LOTFI (Flint Associate Provost)

with KAREN STONG

\$5,000 11/01/2011 - 10/31/2012

Vertex Pharmaceuticals, Inc.

A 2-Part, Open-Label Study of Telaprevir in Combination With Peginterferon Alfa-2a (Pegasys?) and Ribavirin (Copegus?) in Subjects Chronically Infected with Genotype 1 Hepatitis C Virus Following Liver Transplantation

ROBERT JOHN FONTANA (Int Med-Gastroenterology)

\$201,030 03/01/2012 - 02/28/2015

Veterans Affairs, Department of

IPA Valerie Corinne Kahn

ANGELA TSAI FAGERLIN (Int Med-General Medicine)
\$3,926 04/01/2011 - 03/31/2012

IPA Agreement_Tina Jones_FY12

BENJAMIN M SEGAL (Neurology Department)
\$24,571 01/01/2012 - 09/30/2012

IPA Extension - Tina Wheeler

MARK ANDREW ILGEN (Psych HlthSvc Outcome Research)
\$28,937 03/01/2012 - 02/28/2013

IPA Daniel Almirall

DANIEL ALMIRALL (SRC-Quantitative Methods)
\$8,226 04/01/2012 - 03/31/2013

IPA - Daniel Eisenberg

DANIEL EISENBERG (Health Management and Policy)
\$8,657 04/01/2012 - 03/31/2013

VA-IPA for Astrid Fishstrom

CHRISTOPHER RYAN FRIESE (SON-Grants)
\$17,394 04/01/2012 - 09/30/2012

IPA-Edward Saunders

ANGELA TSAI FAGERLIN (Int Med-General Medicine)
\$8,396 04/01/2012 - 09/30/2012

IPA-Ian Moore

ANGELA TSAI FAGERLIN (Int Med-General Medicine)
\$7,865 04/01/2012 - 09/30/2012

RECHARGE MIL VA Sponsor FY13

MICHAEL J WELSH (Cell and Developmental Biology)
\$7,256 05/17/2012 - 09/30/2012

Virginia Polytechnic Institute and State University

Self-Powered Sensor Network for Bridge Health Prognosis

DANIEL J INMAN (Aerospace Engineering)
\$267,957 02/01/2012 - 01/31/2013

Washington University

Supplemental Funding: Pharmacomechanical Catheter-Directed Thrombolysis for Acute DVT - (ATTRACT) VA

VENKATARAMU N KRISHNAMURTHY (Department of Radiology)
\$10,000 02/01/2012 - 03/31/2013

Wayne State University

Follow-Up Program -NRN

JOHN D E BARKS (Pediatrics-Neonatal/Perinatal)

\$4,560 04/01/2012 - 03/31/2013

Time Limited Observational Study of the Moderately Preterm Infant

JOHN D E BARKS (Pediatrics-Neonatal/Perinatal)

\$12,236 04/01/2012 - 03/31/2013

World Bank

IFRI - World Bank Proposal: Changes in community forest outcomes and the role of different causal factors

PETER NEWTON (Sch of Nat Resources & Environ)

\$99,513 04/01/2012 - 03/31/2013

Yale University

Cooperative Multicenter Reproductive Medicine Network-PPCOS

GREGORY M CHRISTMAN (Obstetrics and Gynecology Dept)

\$29,116 12/01/2011 - 11/30/2012