

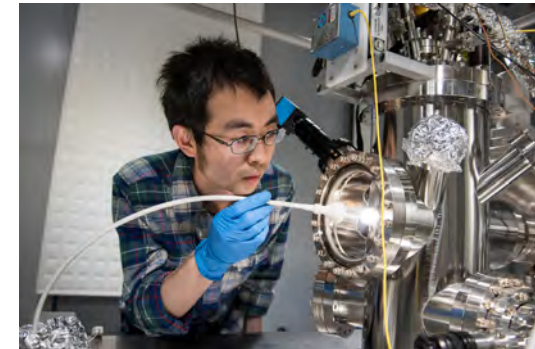
U-M Research Award and Expenditures Report: February 2018

This report summarizes the overall trends in research activity across all three campuses of the University of Michigan through December 31, 2017.

Figure 1 shows that total research expenditures through the first half of fiscal year 2018 are ahead of the previous year by 4.2 percent. It is important to note that total research expenditures for fiscal year 2017, which closed on June 30, 2017, reached a record high of \$1.48 billion.

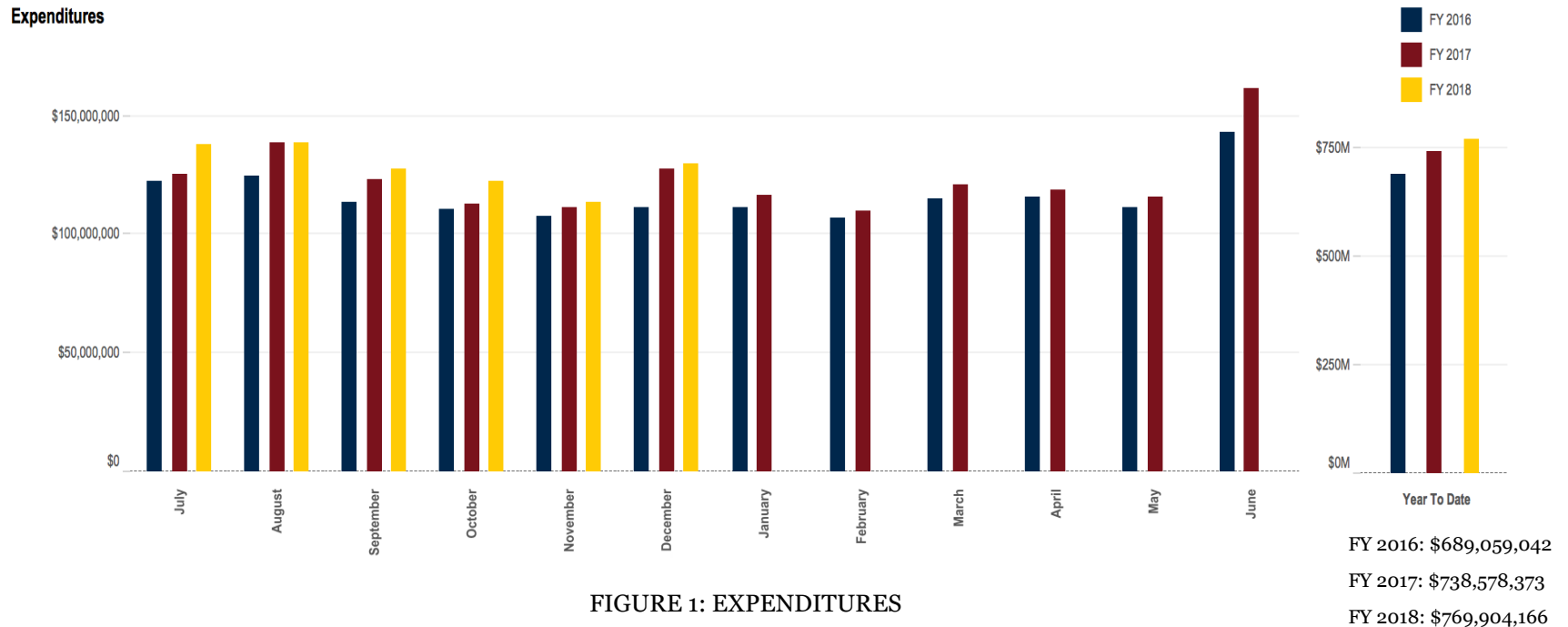
The number of research submissions in December was down slightly from December 2016, as shown in Figure 2, but total submissions for the year remain 2.3 percent ahead of our pace from the previous year. Figure 3 shows the value of those submissions is down 22 percent year to date compared to the first half of fiscal year 2017.

Figures 4 and 5 show the number of new research awards from external sponsors are up 2.9 percent, and their value has increased by 17.1 percent when compared to the previous fiscal year—led by a 6-year, \$103.8 million award from the Department of Health and Human Services to fund the ongoing Health and Retirement Study.



S. Jack Hu
Vice President for Research

Daryl Weinert
Associate Vice President for Research, Business Operations



Submissions By Count

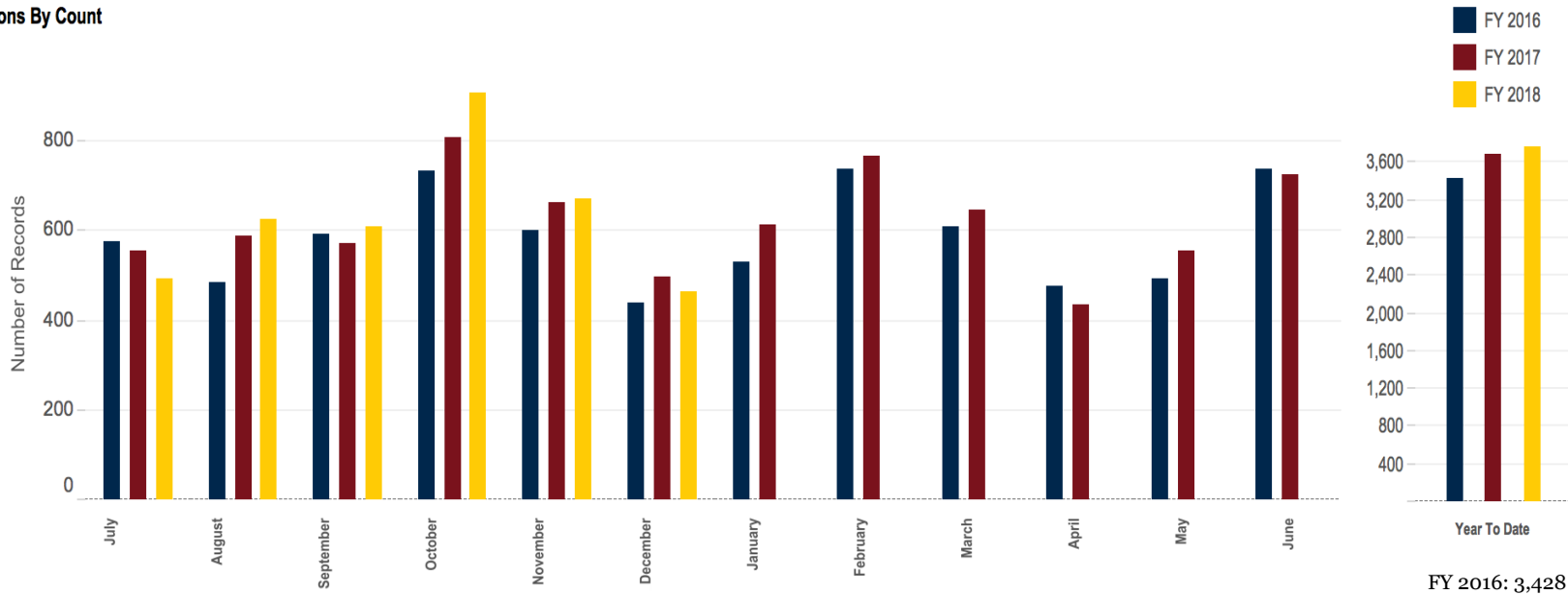


FIGURE 2: SUBMISSIONS BY COUNT

FY 2016: 3,428
 FY 2017: 3,685
 FY 2018: 3,772

Submissions By Amount

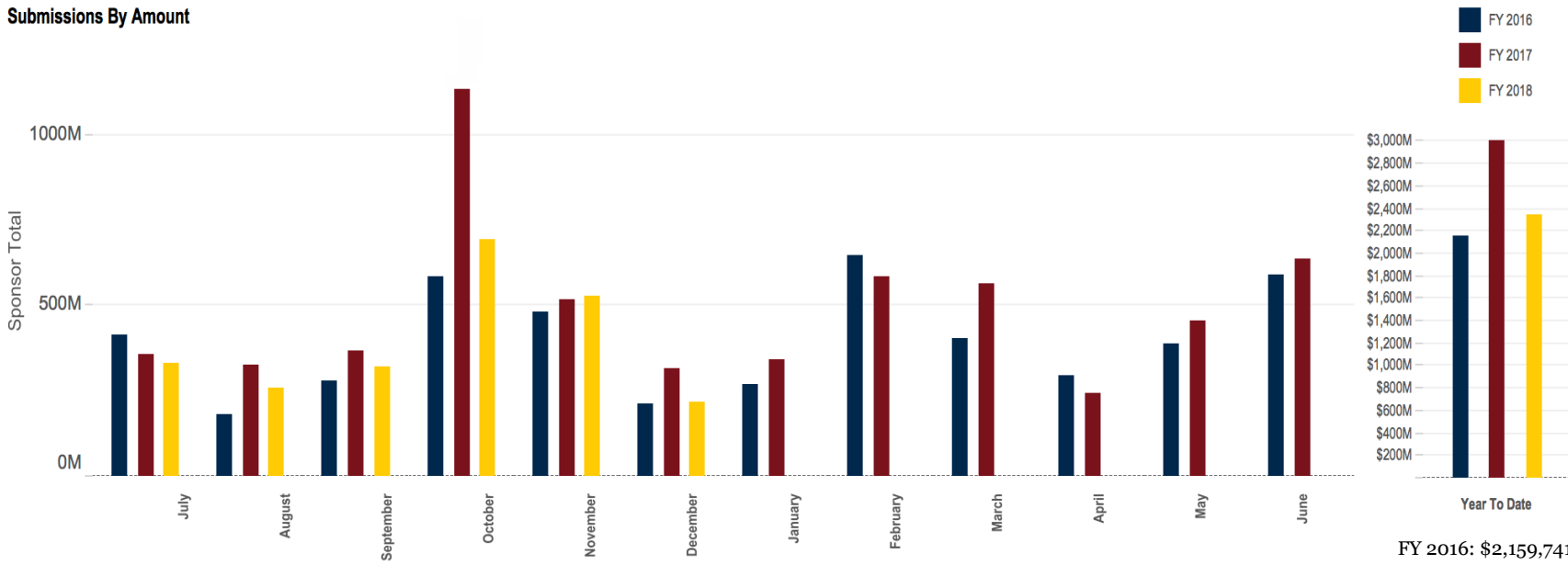


FIGURE 3: SUBMISSIONS BY AMOUNT

FY 2016: \$2,159,741,538
 FY 2017: \$3,013,140,506
 FY 2018: \$2,349,317,189

Awards By Count

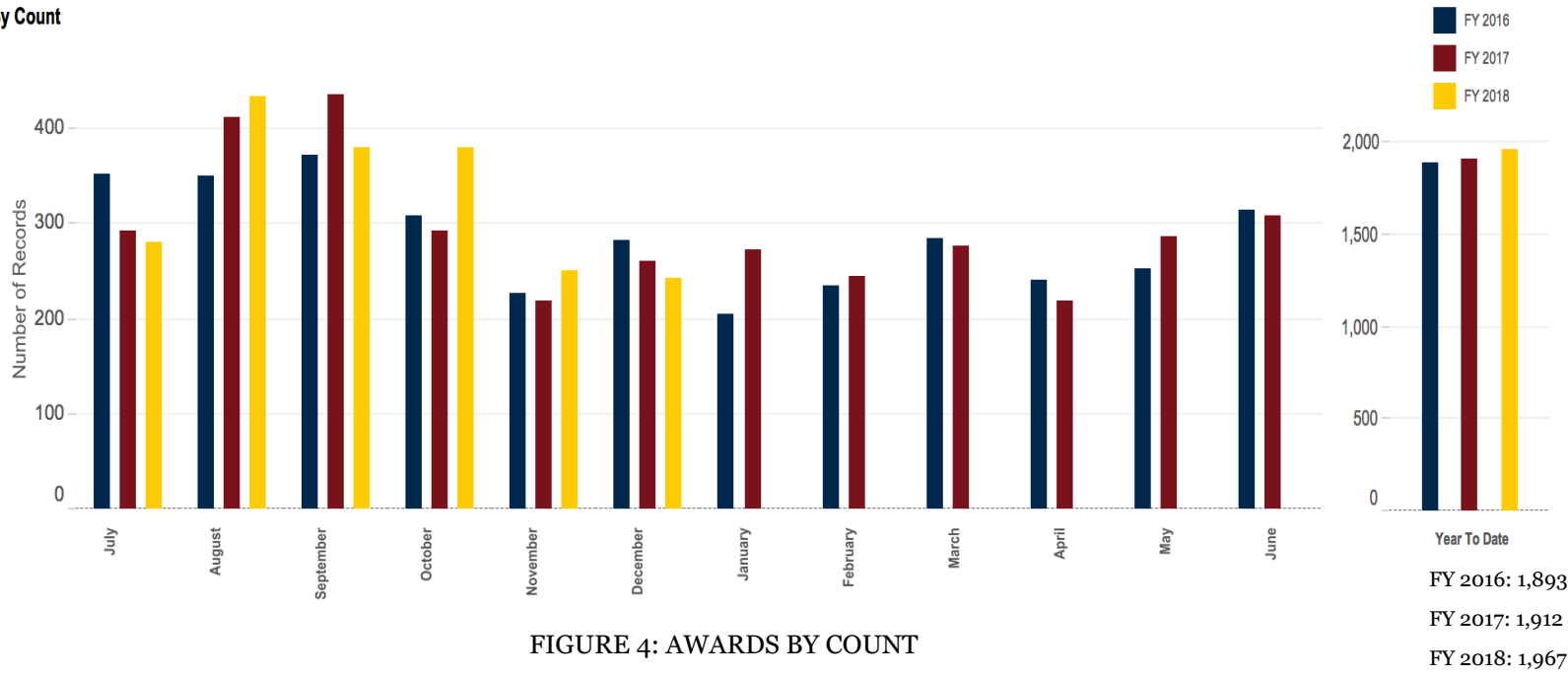


FIGURE 4: AWARDS BY COUNT

Awards By Amount

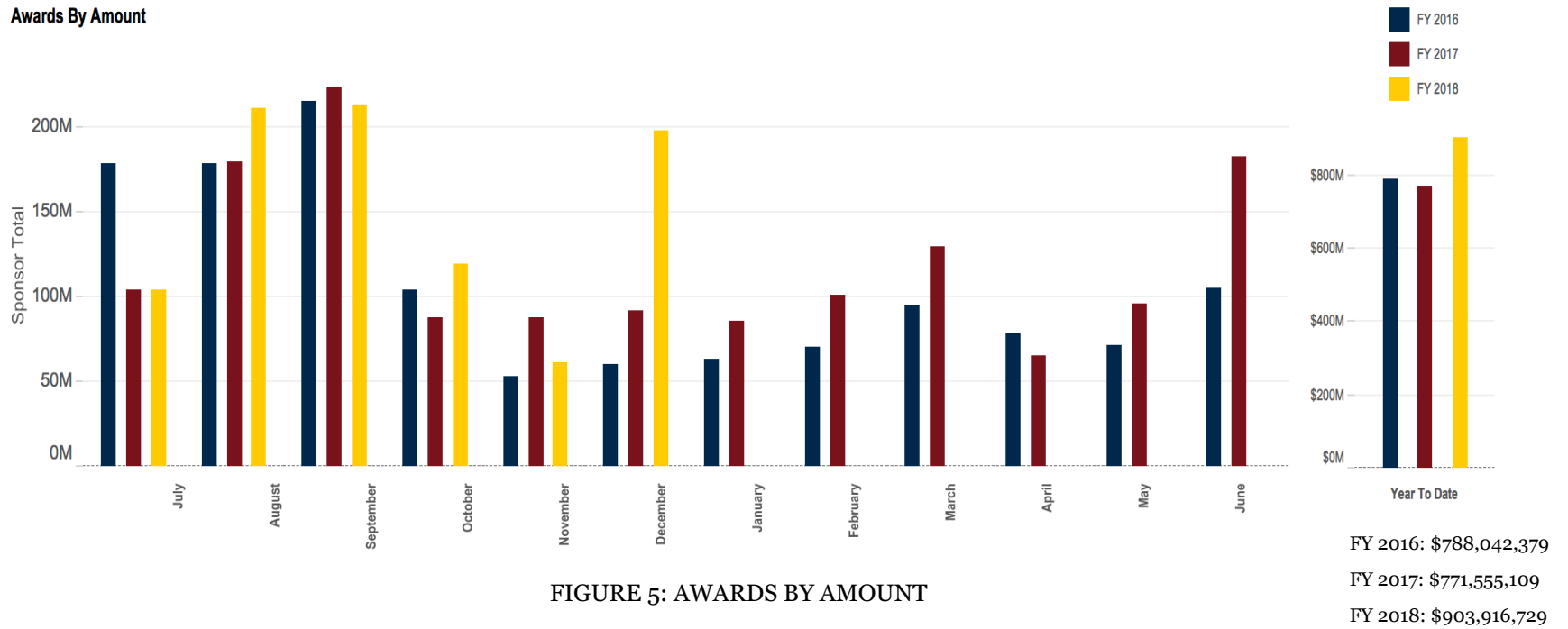


FIGURE 5: AWARDS BY AMOUNT

20 LARGEST PROJECT AWARDS - DECEMBER 2017

Principal Investigator	Department	Proposal Title	Direct Sponsor	Award Sponsor Total	Estimated Award Duration (years)
Weir, David	SRC-Hrs	Health and Retirement Study: Yrs 29-34	Health and Human Services, Department of-National Institutes of Health	\$103,832,432	6.0
Bertacco, Valeria	EECS - CSE - CELAB	Applications Driving Architectures (ADA) Center	Semiconductor Research Corporation	\$27,500,000	5.0
Maher, Patty	Survey Research Organization	Household Income and Child Development in the First Three Years of Life	University of California - Irvine	\$4,685,750	4.9
Gadgeel, Shirish	Int Med-Hematology/Oncology	A PHASE II/III MULTICENTER STUDY EVALUATING THE EFFICACY AND SAFETY OF MULTIPLE TARGETED THERAPIES AS TREATMENTS FOR PATIENTS WITH ADVA..	Genentech, Inc.	\$3,989,557	6.1
Forrest, Stephen	COE EECS - ECE - SSEL	Nanosystems Engineering Research Center for Directed Multiscale Assembly of Cellular Metamaterials with Nanoscale Precision: CELL-MET	Boston University	\$2,866,986	5.0
Fabiilli, Mario	Department of Radiology	Angiogenic growth factor delivery for vascular regeneration in critical limb ischemia using acoustically-responsive scaffolds	Health and Human Services, Department of-National Institutes of Health	\$2,838,584	5.0
Miller, Douglas	Department of Radiology	Ultrasound-Induced Pulmonary Hemorrhage During Diagnostic Examination of the Lung	Health and Human Services, Department of-National Institutes of Health	\$2,657,153	4.0
Wright, Julie	Int Med-Nephrology	Improving Outcomes in Kidney Disease Using Systems-Driven Education and Coaching	Health and Human Services, Department of-National Institutes of Health	\$2,516,557	4.9
Opipari, Valerie	Pediatric & Comm Diseases Dept	Advancing Child Health Through Cellular and Molecular Biology	Health and Human Services, Department of-National Institutes of Health	\$2,292,000	5.0
Colacino, Justin	Environmental Health Sciences	Developmental Exposures, Stem Cell Reprogramming, and Breast Cancer Disparities	Health and Human Services, Department of-National Institutes of Health	\$2,139,846	5.0
Bielas, Stephanie	Human Genetics Department	Role of histone ubiquitination in neurodevelopment and disease	Health and Human Services, Department of-National Institutes of Health	\$2,004,745	5.0
Lawlor, Elizabeth	Pediatrics-Hematology/Oncology	Regulation and function of HOX genes in Ewing sarcoma pathogenesis	Health and Human Services, Department of-National Institutes of Health	\$1,886,070	5.0
Aton, Sara	LSA Molec./Cell./Develop. Bio	Thalamocortical and corticocortical mechanisms for sleep-dependent visual learning	Health and Human Services, Department of-National Institutes of Health	\$1,861,576	5.0
Pal, Dinesh	Anesthesiology Department	Neurochemical mechanisms of sedative effects on sleep homeostasis	Health and Human Services, Department of-National Institutes of Health	\$1,492,979	4.9
Tiba, Mohamad	Emergency Medicine Research	Novel Noninvasive Methods of Intracranial Pressure and Cerebrovascular Autoregulation Assessment: Seeing the Brain through the Eyes	Defense, Department of-Army, Department of the	\$1,480,171	3.0
Xu, Haoxing	LSA Molec./Cell./Develop. Bio	Ion channels in the tubulovesicles	Health and Human Services, Department of-National Institutes of Health	\$1,377,326	4.0
Austin, Todd	EECS - CSE - CELAB	Ensembles of Moving Target Defenses for Scalable and Composable Hardware Security	Defense, Department of-Defense Advanced Research Projects Agency	\$1,220,353	1.3
McBride, Ryan	Nuclear Eng & Radiological Sci	Multi-University Center of Excellence for Pulsed-Power-Driven High Energy Density Science	Cornell University	\$1,000,000	5.0
Talpez, Moshe	Int Med-Hematology/Oncology	An Open-Label, Randomized, Phase 2 Dose-Finding Study of Pacritinib in Patients with Thrombocytopenia and Primary Myelofibrosis, Post-Polycythemia Vera Myelofibrosis, or Post- ..	CTI BioPharma Corp.	\$885,228	4.1
Gerber, Elisabeth	G. Ford Sc Pub Pol	Detroit Metropolitan Area Communities Study	Knight, John S. and James L., Foundation	\$761,612	3.0

For a complete list, visit orsp.umich.edu/saw.