

AWARDS ESTABLISHED
Research and Other Sponsored Activities
July 1, 2011 through January 31, 2011

**Received by the Regents
February 16, 2012**

The awards detailed in this list were established July 1, 2011 through January 31, 2011. The dollar values depict the best available estimate of the funding the University should receive over the life of the award. These values may be modified as additional data become available relative to future funding prospects. These modifications are not reported in the attached list. As a result, the dollar values of awards presented in this list will differ from the year-end totals. The full amount of an award is recorded in the year in which it was established. Often these funds are expended over several years, making comparisons between awards and expenditures somewhat misleading. Research expenditures are presented here to provide a trend line for the current fiscal year.

	Number of Awards FY 2011	Number of Awards FY 2012	% Change	Value of Awards FY 2011	Value of Awards FY 2012	% Change
Total Awards Processed (January)	223	212	-4.9%	\$ 77,537,007	\$ 121,341,689	56.5 %
Research Awards	157	128	-18.5%	\$72,138,790	\$ 117,078,528	62.3%
Research Training	8	5	-37.5%	\$1,548,907	\$ 668,659	-56.8%
Other Sponsored Activity	58	79	36.2%	\$3,849,310	\$ 3,594,502	-6.6%
<hr/>						
Total Awards Processed Fiscal Year to Date	1,805	1,759	-2.5%	\$ 728,841,914	\$ 719,692,649	-1.3%
Research Awards	1,294	1,202	-7.1%	\$ 617,756,800	\$ 657,260,866	6.4%
Research Training	98	94	-4.1%	\$ 42,110,612	\$ 17,796,920	-57.7%
Other Sponsored Activity	413	463	12.1%	\$ 68,974,502	\$ 44,634,863	-35.3%

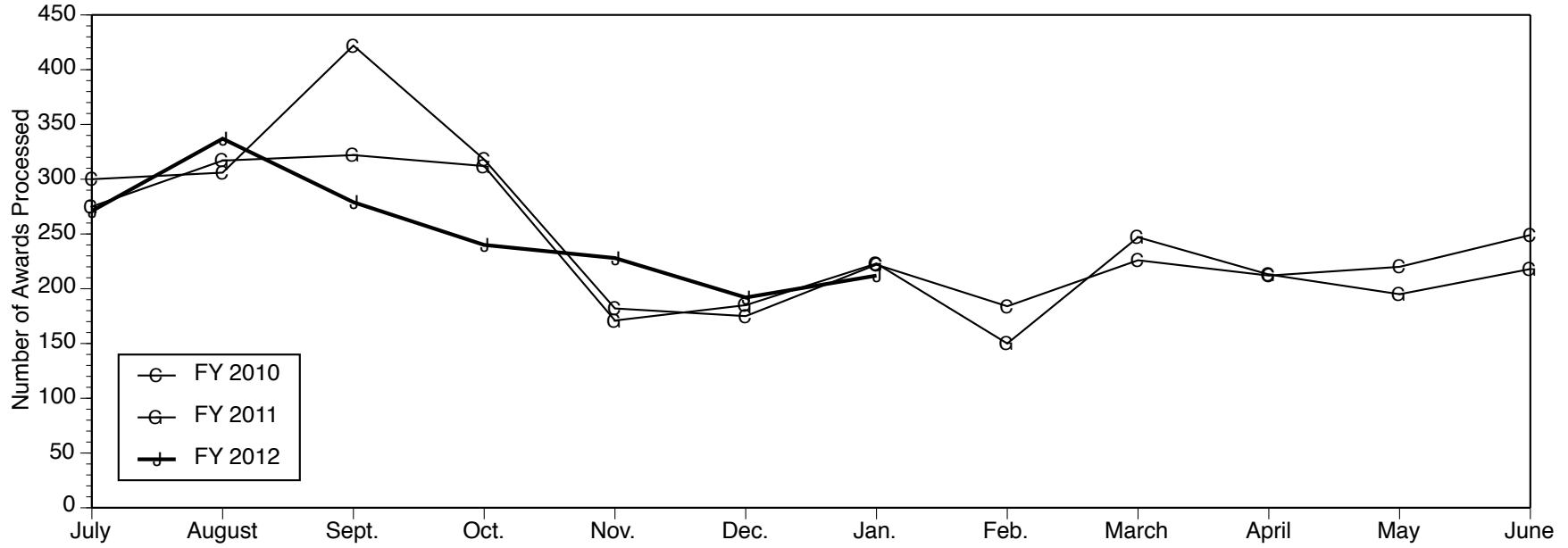
There is a dramatic increase in the value of awards processed in January 2012 when compared with January 2011 caused by an \$82.61 million award processed in January 2012. The award funded by the National Institutes of Health for a project titled, "Health and Retirement Study, Years 23 – 28", is reported under the Survey Research Center. If this award were eliminated from the listing, total award value for the month of January would have declined 50.0% with a corresponding year-to-date value declining 12.6%. The largest award received in January 2011 totaled \$20.0 million.

----- RESEARCH EXPENDITURES -----

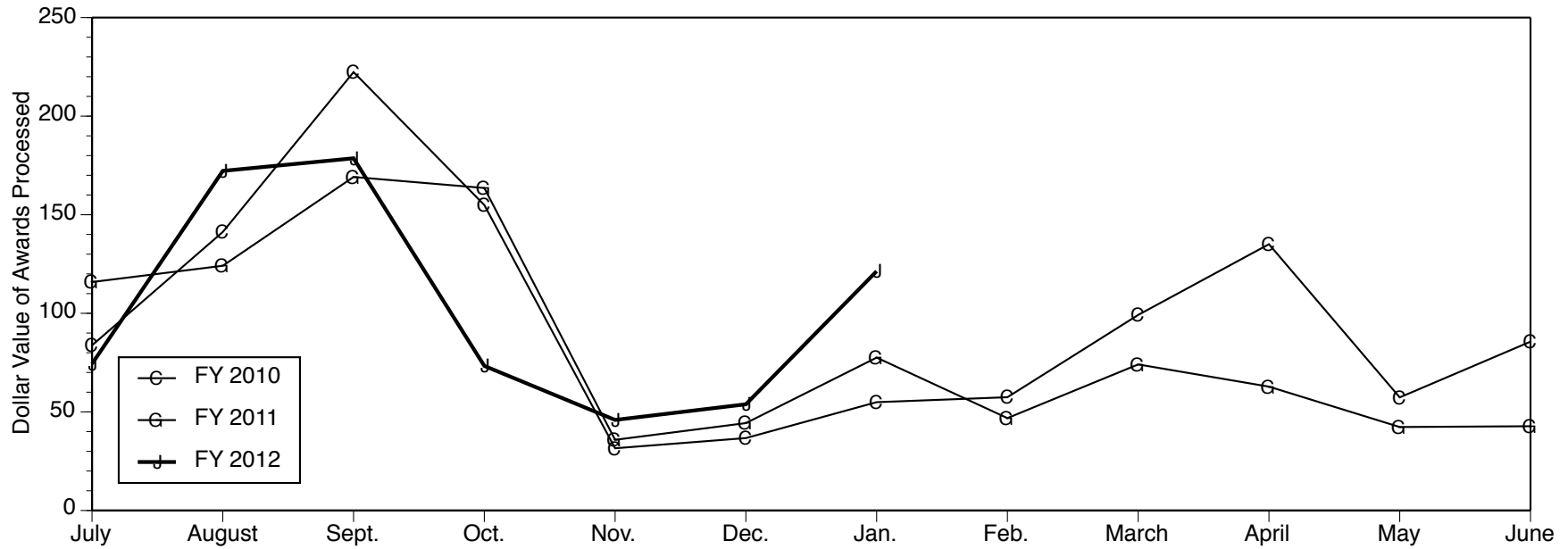
	Federal Expendable Restricted	Other Funds	Total Expenditures
December 2011	\$ 402,948,006	\$ 244,646,347	\$ 647,594,354
December 2010	\$ 403,354,860	\$ 198,824,016	\$ 602,178,877
Percent Change	-0.1%	23.0%	7.5%

Source: Office of Research and Sponsored Projects

Number of Awards Processed



Dollar Value of Awards Processed



Data Source: Office of Research and Sponsored Projects

AWARDS ESTABLISHED FOR RESEARCH AND OTHER SPONSORED ACTIVITIES

January 01, 2012 through January 31, 2012

The awards listed here by direct sponsor were established during the month designated in the heading above. For each award, the listing includes the award title, the principal investigator(s), the proposal administrative department, participating investigators with specified effort, the estimated amount awarded for the award period, and the estimated award period.

Abbott Laboratories

Abbott Labs Compound Screening

JASON EDWARD GESTWICKI (Life Sciences Institute-Admin)

\$30,000 12/16/2011 - 12/15/2012

Actelion

Registry to PROSPECTively Describe Use of Epoprostenol for Injection ("RTS Epoprostenol") in Patients with Pulmonary Arterial Hypertension

VALLERIE MCLAUGHLIN (Int Med-Cardiology)

with MELVYN RUBENFIRE

\$36,425 11/01/2011 - 12/31/2012

Aetna Corporation

International Student/Scholar Health Insurance Advisor Position (2011-12)

LOUISE M BALDWIN (International Center)

\$22,000 09/01/2011 - 08/31/2012

Alzheimer's Art Quilt Initiative

lipingw - New PAF - Tue May 24 11:54:26 EDT 2011

SYLVIE GARNEAU-TSODIKOVA (Life Sciences Institute-Admin)

\$30,000 01/01/2012 - 12/31/2012

American Concrete Institute (ACI)

Effect of Shear Stud Layout on the Seismic Behavior of Slab-Column Connections

GUSTAVO J PARRA-MONTESINOS (Civil & Environmental Engr)

\$10,000 07/01/2011 - 02/28/2013

American Diabetes Association, Inc.

mTOR complex (mTORC) regulation by site-specific mTOR phosphorylation

DIANE C FINGAR (Cell and Developmental Biology)

\$109,250 01/01/2012 - 12/31/2012

American Medical Systems

Urethral Mobility by MR

JOHN O DELANCEY (Obstetrics and Gynecology Dept)

with JAMES A ASHTON-MILLER

\$27,837 11/01/2011 - 01/31/2012

Arbor Ultrasound Technologies, LLC

Magnetic Drive Mechanism for VF Doppler Smart Sensor

JONATHAN H SEGAL (Int Med-Nephrology)

with GRANT HENRI KRUGER

WILLIAM F WEITZEL III

\$44,902 01/01/2012 - 06/30/2012

Asahi Glass Company

Sputter Oxide Semiconductor Thin Film Transducers on Asahi Glass Substrates

JERZY KANICKI (COE EECS - ECE - SSEL)

\$301,965 12/01/2011 - 11/30/2012

A.S.P.E.N Rhoads Research Foundation

Neurodevelopmental outcomes of pediatric patients treated with modified intravenous fat emulsion for the treatment and/or prevention of parenteral nutrition associated liver diseases (PNALD)

ALLISON B BLACKMER (PHARMACY Clin, Soc & Admin Sci)

\$5,000 01/01/2012 - 12/31/2012

Avago Technologies

Photoconductive Lifetime Characterization of Semiconductive Epilayers

JOHN F WHITAKER (COE EECS - ECE - USL)

\$5,850 09/26/2011 - 01/31/2012

Avon Foundation

Inflammatory breast cancer: analysis and control of the embolic and metastatic phenotype to develop personalized therapies

SOFIA D MERAJVER (UM Center for Global Health)

with AMR S SOLIMAN

\$150,000 01/01/2012 - 12/31/2012

Baker College of Owosso

Shiawassee County Incubator Project: Market and Feasibility Analysis and Business and Operating Plan Development

LAWRENCE ALYN MOLNAR (IRLEE)

\$40,000 11/01/2011 - 06/30/2012

Battelle Energy Alliance, LLC

Liquid Scintillator Neutron Multiplicity Counter for Safeguards Applications

SARA A POZZI (Nuclear Eng & Radiological Sci)

\$110,000 12/09/2011 - 09/30/2012

Battelle Memorial Institute

Development and Demonstration of the Sediment Ecotoxicity Assessment Ring (SEA Ring), a multi-purpose in situ bioassay device for improving ecological risk assessment at DoD sites

ALLEN BURTON (SNRE CILER)

\$65,081 08/18/2011 - 08/17/2012

Bernard Osher Foundation

Osher Reentry Scholarship Program

CHRISTINE M WATERS (Flint Provost)

\$50,000 07/01/2012 - 06/30/2013

Boston University

Air Pollution and Risk of Incident Hypertension and Diabetes in U.S. Black Women

ROBERT DANIEL BROOK (Int Med-Cardiology)

\$34,258 08/01/2011 - 03/31/2012

Brigham and Women's Hospital

Evaluating Cardiometabolic and Sleep Health Benefits of a Workplace Intervention

YI LI (Biostatistics Department)

\$9,327 09/01/2011 - 01/31/2012

California Pacific Medical Center

Consortium to Study the Genetics of Longevity

RICHARD A MILLER (Pathology Department)

with ANDRZEJ T GALECKI

JAMES M HARPER

\$427,570 09/30/2011 - 08/31/2012

CAMECA France

Atom Probe Tomography Training

EMMANUELLE MARQUIS (Materials Science & Engin.)

\$14,975 09/01/2011 - 02/29/2012

Casey, Annie E., Foundation

Annie E. Casey ICPC Proposal

VIVEK S SANKARAN (Law Clinical Activity)

\$10,000 09/01/2011 - 08/31/2012

Casey Family Program Foundation

Detroit Center for Family Advocacy

VIVEK S SANKARAN (Law Clinical Activity)

\$39,991 01/01/2012 - 12/31/2012

Cass River Greenway

Fixed Price Agreement: Cass River Signage

JONATHAN H JAROSZ (Flint Ctr/Environmental Rsch)

\$4,525 01/03/2012 - 05/31/2012

Catholic Social Services

CSS/AAA 1B Adult Day Services

BARBRA LINK (UMH Silver Club Programs)

\$39,860 10/01/2011 - 09/30/2012

Cincinnati Children's Hospital Medical Center

Behavioral and Nutrition Treatment to Help Cystic Fibrosis Preschoolers Grow

JENNIFER LYNN BUTCHER (Child Behavioral Health)

\$21,273 08/01/2011 - 07/31/2012

College of William and Mary

Consequences of the Great Recession on Health & Health-Related Outcomes

LAUREN HERSCH NICHOLAS (SRC-Hrs)

\$64,141 01/01/2012 - 06/30/2013

Columbia University*Feasibility of a Weight Loss Intervention Among Female Cancer Survivors In SWOG*

LAURENCE H BAKER (Int Med-Hem/Oncology and SWOG)

\$69,426 07/01/2011 - 06/30/2012

Stem Cells and the Origin of Barrett's Esophagus

DAVID G BEER (Thoracic Surgery Section)

\$12,084 09/26/2011 - 08/31/2012

U.S. ATLAS Operations: Empowering University Physics to make Discoveries at the Energy Frontier (2/12-5/12)

BING ZHOU (LSA Physics)

\$76,306 02/01/2012 - 01/31/2013

Atlas Great Lakes Tier 2 Center (2/12-5/12)

SHAWN P MCKEE (LSA Physics)

\$200,000 02/01/2012 - 01/31/2013

Constellation Energy*Energy Technology and Education for Electric Vehicles*

BEN Q LI (Dbn Coll of Eng-Mechanical Eng)

with DOHOY JUNG

\$50,000 01/01/2012 - 12/31/2012

Consumers Energy Company*Urban Alternatives House Consumers' Energy Portion*

RICHARD HILL-ROWLEY (Flint Earth & Resource Science)

\$45,000 01/01/2012 - 12/31/2013

Cook Incorporated*Zenith Fenestrated AAA Endovascular Graft*

JOHN E RECTENWALD (Vascular Surgery Section)

\$58,200 01/16/2012 - 11/30/2016

Corcept Therapeutics, Inc.*An Open Label Extension Study of the Efficacy and Safety of CORLUX? (mifepristone) in the Treatment of the Signs and Symptoms of Endogenous Cushing's Syndrome*

DAVID E SCHTEINGART (Metabolism, Endo & Diabetes)

with GARY D HAMMER

\$114,459 09/23/2009 - 09/23/2011

Cornell University*Pharmacogenetics and Chemoprevention in Colorectal Cancer: Aspirin, NSAIDS, Statins, and Bisphosphonates*

STEPHEN B GRUBER (Int Med-Molecular Med&Genetics)

with BHRAMAR MUKHERJEE

\$172,349 09/24/2010 - 04/30/2012

National Nanotechnology Infrastructure Network-YR 3-(6 months-2nd half) 2011 Renewal

KHALIL NAJAFI (COE EECS - ECE - SSEL)

with FRED LEWIS TERRY JR

\$637,500 09/01/2011 - 02/28/2012

CRDF Global

Underlying mechanisms of climate induced changes at the tree-line ecotone in the Polar Urals

VALERIY Y IVANOV (Civil & Environmental Engr)

\$14,998 12/12/2011 - 12/11/2013

CTI Clinical Trial and Consulting Services

A Randomized, Open-Label, Multicenter Trial To Determine Safety And Efficacy Of Eculizumab In The Prevention Of Antibody Medicated Rejection (AMR) In Living Donor Kidney Transplant Recipients Requiring Desensitization Therapy Protocol Number: C10-001

MILAGROS SAMANIEGO (Int Med-Nephrology)

\$251,280 12/16/2011 - 12/31/2017

Cuyahoga Community College

Cuyahoga Community College

DEE W EDINGTON (Health Management Research Ctr)

\$20,400 03/01/2012 - 02/28/2014

Defense, Department of-Air Force, Department of the

Ultra ? Low - Power Asynchronous Processor and FPGA Design for Mobile Applications using Multiferroic Single-Domain Nanomagnets

PINAKI MAZUMDER (COE EECS - CSE - SSRL)

\$151,157 11/15/2011 - 11/14/2012

Defense, Department of-Army, Department of the

Critical Analyses and Development of Training Mechanisms: Cholinergic Crisis and Pediatric/Neonatal Intubation

PAMELA B ANDREATTA (Obstetrics & Gynecology RollUp)

with ANJEL M VAHRATIAN

JOSEPH HOUSE

SUZANNE L DOOLEY-HASH

\$3,377,701 11/04/2011 - 12/03/2014

Defense, Department of-Defense Advanced Research Projects Agency

Microsystem for Elimination of Rotation, Inertial and Timing Errors (MERITE)

KHALIL NAJAFI (COE EECS - ECE - SSEL)

with BECKY LORENZ PETERSON

KENN RICHARD OLDHAM

SCOTT RYAN GREEN

YOGESH B GIANCHANDANI

\$1,232,015 12/21/2011 - 02/28/2013

Defense, Department of-Navy, Department of the

Integration of Advanced Analysis and Materials Research: Capturing Process Sensitive Materials Information in Compact, Computationally Efficient Models

JOHN EDMOND ALLISON (Materials Science & Engin.)

with ANTON VAN DER VEN
EMMANUELLE MARQUIS
J WAYNE JONES
KATSUYO S THORNTON
SAMANTHA HAYES DALY
VEERA SUNDARARAGHAVAN

\$3,350,745 10/01/2011 - 09/30/2015

Extended Capabilities for the HAUV Ship-Inspection Vehicle

RYAN M EUSTICE (Naval Arch & Marine Dept)

\$404,615 10/01/2011 - 09/30/2013

INTEGRATION AND INTERACTIONS AMONG COGNITIVE ARCHITECTURE LEARNING MODULES

JOHN E LAIRD (COE EECS - CSE - AI)

\$661,963 01/08/2008 - 09/30/2013

Response Variance Prediction in the Energy Finite Element Analysis (EFEA)

NICKOLAS VLAHOPOULOS (Naval Arch & Marine Dept)

\$100,685 01/01/2012 - 12/31/2012

State-Aware Reconfiguration and Control of Shipboard Plants based on Adaptive Pipeline Architectures in Wireless Sensor and Actuator Networks

JEROME P LYNCH (Civil & Environmental Engr)

\$198,057 04/01/2012 - 08/31/2013

Stephen Feinberg - IPA

STEPHEN ELLIOTT FEINBERG (DENT Maxillofacial Surgery)

\$100,000 12/01/2011 - 11/30/2012

Detroit Economic Growth Corporation (DEGC)

Detroit Works Project - Planning Awareness Toolkit

ERIC R DUEWEKE (Urban Planning)

\$4,000 11/01/2011 - 07/31/2012

Dompe S.p.A.

2011.079: Phase Ib Pilot Study to Evaluate Reparixin in Combination with Chemotherapy with Weekly Paclitaxel in Patients with HER-2 Negative Metastatic Breast Cancer (MBC)

ANNE F SCHOTT (Int Med-Hematology/Oncology)

with DAFYDD G THOMAS
\$399,605 09/30/2011 - 09/30/2012

EERA

Developing Adoption Forecasts of Electric Vehicles Using Market Share and Stated Preference Data Models

STEVEN J SKERLOS (Mechanical Engineering)

\$100,928 08/01/2011 - 06/30/2012

EKSO Bionics

Ekso Bionics contract

DANIEL P FERRIS (School of Kinesiology)

\$174,190 09/01/2011 - 08/30/2012

Energy, Department of

Proposal to Study the Properties and Interactions of Elementary Particles, Funding Years FY 2012-2014

DANTE ERIC AMIDEI (LSA Physics)

with AARON THOMAS PIERCE

AUGUST EVRARD
BING ZHOU
DAVID W GERDES
DRAGAN HUTERER
FINN LARSEN
GORDON L KANE
GREGORY TARLE
HENRIETTE DINA-MARIA ELVANG
HOMER A NEAL
JAMES DANIEL WELLS
JAMES T LIU
JIANMING QIAN
JUNJIE ZHU
KATHERINE FREESE
KATHRYN ZUREK
LEOPOLDO A PANDO ZAYAS
MYRON K CAMPBELL
RATINDRANATH AKHOURY
RUDOLF P THUN
TIMOTHY A MCKAY
WOLFGANG B LORENZON

\$1,333,000 11/01/2011 - 04/30/2012

Transforming organic photovoltaics into a fully practical energy solution

STEPHEN R FORREST (COE EECS - ECE - SSEL)

with JERAMY D ZIMMERMAN

\$750,000 09/01/2011 - 10/31/2015

The University of Michigan Industrial Assessment Center (UM-IAC)

ARVIND ATREYA (Mechanical Engineering)

with CLAUDIUS BORGNAKKE

\$120,000 09/30/2011 - 05/31/2013

Development of an Atmospheric Climate Model with Self-Adapting Grid and Physics-Supplement

JOYCE E PENNER (Atm, Oceanic & Space Sci.)

\$28,300 09/15/2001 - 09/14/2012

Epilepsy Research Foundation

Role of SCN1B in Pediatric Epilepsy

LORI L ISOM (Pharmacology Department)

\$20,000 01/02/2012 - 12/31/2012

ESI-US Holdings, Inc

Assessment, Evaluation and Implementation of ESI software at University of Michigan

ANTHONY M WAAS (Aerospace Engineering)

\$23,585 01/01/2012 - 05/31/2012

Federal Reserve System

Household Financial Behavior - 2012

RICHARD T CURTIN (SRC-Surveys of Consumers)

\$80,108 01/01/2012 - 12/31/2012

Fermi National Accelerator Laboratory

MIPP Analysis Extended until 6/30/2011

MICHAEL J LONGO (LSA Physics)

\$12,403 05/01/2011 - 06/30/2011

Focus: Hope

Prediction and In-Situ monitoring during Direct Metal Deposition(DMD)

JYOTIRMOY MAZUMDER (Mechanical Engineering)

with LIJUN SONG

\$149,999 01/18/2012 - 10/05/2012

Foundation Fighting Blindness, Inc., The

GENE-REPLACEMENT THERAPY FOR XLRP DUE TO RPGR MUTATIONS

DEBRA A THOMPSON (Ophthalmology & Visual Science)

with NAHEED WALI KHAN

\$150,000 12/15/2011 - 12/14/2013

General Motors Company

Continuing Project Under Addition of Goal 3 to Thrust Area 3: Advanced Combustion and Aftertreatment of the Continuation of GMCRL/ESR-Andruskiewicz-399301/399302

VOLKER SICK (ME GM)

\$240,024 01/01/2012 - 12/31/2013

General Motors Corporation

Biomechanical Task Based Hand Posture Model Considering Task Force Requirements

THOMAS J ARMSTRONG (CoE Center for Ergonomics)

\$94,973 01/01/2012 - 11/30/2012

Evaluation of General Motors Lifesteps Program 2012

DEE W EDINGTON (Health Management Research Ctr)

\$97,650 01/01/2012 - 03/31/2012

Georgia Institute of Technology

Multi-functional light-matter interfaces based on neutral atoms and solids

LUMING DUAN (LSA Physics)

\$400,000 01/15/2011 - 11/14/2014

Great Lakes Fishery Commission

International Management of Fisheries in Large Lakes-2012 Support of PhD Student Ted Lawrence

JAMES STEPHEN DIANA (Sch of Nat Resources & Environ)

\$65,474 01/03/2012 - 01/02/2013

Greenblendz, Inc

Assessing the Effectiveness of New Embalming Fluid Used for Preservation and Presentation of Specimens for Anatomical Education

AMEED RAOOF (Med Ed/Ofc of Ed Resources&Res)

with KELLI A SULLIVAN

TAMARA A STEIN

\$55,000 12/01/2011 - 05/31/2012

Health and Human Services, Department of-National Institutes of Health

Gastroparesis Clinical Research Consortium ? University of Michigan Clinical Center

WILLIAM LEE HASLER (Int Med-Gastroenterology)

with AMY ELIZABETH ROTHBERG

\$706,740 09/01/2011 - 08/31/2016

Diversity and stability relationships in the murine microbiome

PATRICK D SCHLOSS (Microbiology and Immunology)

with SIMEONE MARINO

\$1,406,160 02/01/2012 - 01/31/2016

Functional Neuroimaging of Individual Differences in Affect and Motivation in Major Depression

BRIAN JAMES MICKEY (Psychiatry Depression Center)

\$729,216 02/01/2012 - 01/31/2016

Characterization of bleach-specific transcriptional regulators in bacteria

URSULA H JAKOB (LSA Molec./Cell./Develop. Bio)

\$416,816 02/01/2012 - 01/31/2014

Mechanisms for Fibrocyte Mediated Enhancement of Survival in Sepsis

JEAN ANN NEMZEK (Lab Animal Medicine Unit)

with BETHANY B MOORE

\$427,625 01/01/2012 - 11/30/2013

Health trajectories from age 12-32: Disparities, discrimination, & socialization

JACQUELYNNE S ECCLES (RCGD-Achievement Research)

with STEPHEN CONKLING PECK

\$871,188 01/11/2012 - 12/31/2014

Nutritional Components of Psychiatric Disease and Treatment Response

SIMON J EVANS (Psych Labs and Bioinformatics)

\$599,032 01/09/2012 - 12/31/2015

Intensive Measurement of Drug Use During the Transition to Adulthood

MEGAN E PATRICK (Youth & Social Issues)

with MICK P COUPER

\$406,244 02/01/2012 - 01/31/2014

Active Site Modifications in de Novo Designed Metalloenzymes

VINCENT L PECORARO (LSA Chemistry)

\$152,766 02/01/2012 - 01/31/2015

Statistical Methods for Cancer Biomarkers

JEREMY MICHAEL GEORGE TAYLOR (Biostatistics Department)

with BHRAMAR MUKHERJEE

BIN NAN

MICHAEL R ELLIOTT

YUN LI

\$808,719 01/01/2012 - 12/31/2015

Natural Product-Inspired Method for Enhancing HIV Protease Inhibitors

JASON EDWARD GESTWICKI (Life Sciences Institute-Admin)

with DAVID M MARKOVITZ

STEVEN R KING

\$424,406 02/01/2012 - 01/31/2014

Health and Retirement Study Yrs 23-28

DAVID R WEIR (SRC-Hrs)

with CHARLES C BROWN
GWENITH GWYN FISHER
HELEN G LEVY
JACQUI SMITH
JAMES S HOUSE
JESSICA DANIELLE FAUL
JOHN BOUND
KENNETH M LANGA
LAUREN HERSCH NICHOLAS
MARY BETH OFSTEDAL
MICK P COUPER
RICHARD L VALLIANT
ROBERT J WILLIS
SHARON REILLY KARDIA
STEVEN G HEERINGA
SUNGHEE LEE

\$82,611,000 01/01/2012 - 12/31/2017

Identification of Activators and Inhibitors of TRPML1 for the Treatment of Type IV Mucopolipidosis and Niemann-Pick Disease

HAOXING XU (LSA Molec./Cell./Develop. Bio)

\$77,750 12/23/2011 - 11/30/2013

Protein-protein interaction essential for bacterial growth and virulence

MARK A SAPER (Biological Chemistry Dept)

\$430,995 02/01/2012 - 01/31/2014

Gutless Adenovirus Mediated Gene Therapy for Glioma S1

MARIA CASTRO (Neurosurgery)

\$75,786 09/01/2011 - 08/31/2012

Genetic Testing and Cancer Screening in Hereditary Cancer Syndromes

ELENA M STOFFEL (Int Med-Gastroenterology)

\$101,586 12/22/2011 - 05/31/2012

Functionality and Fracture Susceptibility of Corticocancellous Structures

KARL JOHN JEPSEN (Orthopaedic Surgery)

\$13,331 09/15/2011 - 07/31/2012

Health and Human Services, Department of National Institutes of Health-Subcontracts

The Role of Central Neurotransmitters in the Pathophysiology of Interstitial Cystitis/Painful Bladder Syndrome

STEVEN EDWARD HARTE (Anesthesiology Department)

\$50,300 07/01/2011 - 06/30/2012

Hillerich and Bradsby Co.

Instrumented Baseball Bat for Bat Testing

NOEL C PERKINS (Mechanical Engineering)

\$9,874 01/01/2012 - 06/30/2012

ICON Clinical Research, Inc.

AN OBSERVATIONAL STUDY TO COLLECT FOLLOW-UP CLINICAL DATA FROM KIDNEY TRANSPLANT RECIPIENTS WHO RECEIVED TOFACITINIB (CP-690,550) IN COMPLETED PHASE 2 STUDIES

DIANE M CIBRIK (Int Med-Nephrology)

\$8,674 01/18/2012 - 12/31/2012

Integrated Sensing Systems (ISSYS)

Novel micro-implant to measure intracardiac pressure in congenital heart patients

MARTIN LINDSEY BOCKS (Pediatrics-Cardiology)

with ERIC J DEVANEY

KEITH E COOK

SONAL THAKKAR OWENS

\$57,260 12/16/2011 - 02/28/2012

Interior, Department of the

Geospatial Assessment of Watershed Pollutants into Nearshore Marine Communities

JUSTIN ARTHUR SAARINEN (Dbn CASL-Natural Sciences)

\$24,999 01/06/2012 - 10/31/2012

The Development and Testing of Structural Equation Models for NAWQA/NEET

MIKE WILEY (Sch of Nat Resources & Environ)

with CATHERINE M RISENG

\$75,000 03/15/2010 - 03/01/2013

International Aluminium Institute

Improving the Life Cycle Human Toxicity Assessment of Aluminium-based Products

OLIVIER J JOLLIET (Environmental Health Sciences)

with ANDREW DALRYMPLE HENDERSON

\$16,000 01/01/2012 - 12/31/2012

Japanese Business Society of Detroit Foundation

Japanese Family Health Program, University of Michigan Health System

MICHAEL D FETTERS (Family Medicine)

\$3,000 01/01/2012 - 12/31/2012

Johnson, Robert Wood, Foundation

Fetal derived induced pluripotent stem cells and neural progenitors for spinal cord regeneration in myelomeningocele

SHAUN KUNISAKI (Pediatric Surgery Section)

\$420,000 01/01/2012 - 12/31/2015

Laserline, Inc.

NSF: IUCRC Industry Sponsorship Yr 1 (Laserline 11/1/11 - 10/31/12)

JYOTIRMOY MAZUMDER (Mechanical Engineering)

\$35,000 11/01/2011 - 10/31/2012

Lilly, Eli, and Company

Talk at Lilly - The Regulation of the autophagy pathway

DANIEL J KLIONSKY (Life Sciences Institute-Admin)

\$3,500 02/23/2012 - 02/24/2012

Lincoln Institute of Land Policy

Urban Land Value: Measurement and Theory

DAVID YVES ALBOUY (LSA Economics)

\$30,000 12/09/2011 - 12/31/2012

Lynx Design

Development of an Active Cancellation of Tremor (ACT) System for Human Assistance

KELVIN LIN-YU CHOU (Neurology Department)

\$56,083 07/01/2011 - 06/30/2012

McMaster University

McMaster contract

MARK STEVEN ROSENTRUB (School of Kinesiology)

\$20,000 01/09/2012 - 06/30/2012

Medibank Health Solutions

Medibank Health Solutions Telehealth Pty Ltd

DEE W EDINGTON (Health Management Research Ctr)

\$40,000 10/01/2011 - 09/30/2012

Medtronic, Inc.

Patient and Physician Survey Determinants of Appropriate ICD Utilization

TODD M KOELLING (Int Med-Cardiology)

\$156,835 01/20/2012 - 01/20/2014

Renal Denervation in Patients with Uncontrolled Hypertension SYMPPLICITY HTN-3

HITINDER SINGH GURM (Int Med-Cardiology)

with ROBERT DANIEL BROOK

\$130,823 12/15/2011 - 12/14/2015

Merck and Company, Inc.

Type I Collagen Nanoscale Morphology:

Examining the Changes Caused by Estrogen Depletion and Drug Treatment

MARK M BANASZAK HOLL (LSA Chemistry)

with BRADFORD G ORR

EDWARD D ROTHMAN

\$100,000 12/15/2011 - 12/15/2013

Meritor WABCO

Sustainable Worldwide Transportation

MICHAEL SIVAK (UMTRI-Human Factors)

\$60,000 01/01/2012 - 12/31/2012

Metropolitan Life Insurance Company

Indicators for Successful and Sustainable Aging in Place

RUTH E DUNKLE (School of Social Work)

\$77,000 01/17/2012 - 12/31/2012

Michigan Human Services, Inc.

Re-tooling Michigan's Child Support Enforcement Program

LAURA LEIN (School of Social Work)

\$469,765 01/01/2012 - 12/31/2014

Michigan Primary Care Association

CAHC MPCA Lincoln High School, Transition proposal FY2012

SHARON A REDMER (UMH-RAHS Lincoln HS)

\$175,000 10/01/2011 - 09/30/2012

Michigan, State of, Human Services, Department of

Support for Faith Communities Coalition on Foster Care

MESUT DURAN (Dbn School of Education)

\$24,942 12/01/2011 - 09/30/2012

Medical Resources System (MRS)

BETHANY A MOHR (Pediatric Hospitalists)

with LISA MARKMAN
PETER J STROUSE

\$201,368 01/01/2012 - 09/30/2013

Michigan, State of, State Police, Department of

Ticketing Aggressive Cars and Trucks (TACT) in Michigan

LIDIA P KOSTYNIUK (UMTRI-Vehicle Sys and Control)

with DANIEL F BLOWER
DAVID W EBY

\$74,988 01/06/2012 - 09/30/2012

Millennium Pharmaceuticals, Inc.

5th Annual Oncology Nursing Conference: Navigating Oncology Nursing

MARCY BOHM WALDINGER (UMH CC Admin Other)

\$2,500 01/20/2012 - 01/19/2013

Mott, Charles Stewart, Foundation

The Other America and Anti-Poverty Policies Fifty Years Later: What Do We Know? What Should We Do?

SHELDON H DANZIGER (FSPP Pov Rsch Center)

\$250,000 11/01/2011 - 10/31/2012

Multiple Myeloma Research Foundation

MMRC Site Investment Grant Amendment - 2012

MOSHE TALPAZ (Int Med-Hematology/Oncology)

\$80,000 01/01/2012 - 12/31/2012

National Aeronautics and Space Administration

Geostatistical Data Assimilation for Atmospheric CO2

NANCY G LOVE (Civil & Environmental Engr)

\$30,000 09/01/2009 - 08/31/2012

Optical Observations of Space Debris

PATRICK O SEITZER (LSA Astronomy)

\$304,356 02/16/2010 - 09/30/2012

Stabilization of bone fractures in partial or zero gravity environments

RACHAEL HOPE SCHMEDLEN (Biomedical Engineering)

\$2,000 12/07/2011 - 12/12/2011

National Retail Federation Foundation (NRF)

2011 AMEX aspire2retail Intercollegiate Challenge

MARY D HINESLY (ROSS SCH Research Support)

\$6,000 09/09/2011 - 09/08/2012

National Science Foundation

Mechanism of non-coding RNA involvement in transcriptional gene silencing

ANDRZEJ TOMASZ WIERZBICKI (LSA Molec./Cell./Develop. Bio)

\$927,979 01/15/2012 - 12/31/2015

Doctoral Dissertation Research: Managing Marriage: Kinship and Bureaucracy in Contemporary Jordan

ANDREW J SHRYOCK (LSA Anthropology)

\$13,300 01/15/2012 - 12/31/2012

The evolution of honest communication: the physiological consequences of social costs

ELIZABETH ALISON TIBBETTS (LSA Ecology & Evolutionary Bio)

\$225,000 03/01/2012 - 02/28/2014

Modern Optics in the City of Light, a Collaborative REU Site in Paris

STEVEN M YALISOVE (COE EECS - ECE - USL)

with JOHN A NEES

\$365,893 02/01/2012 - 01/31/2015

CAREER: Collective Quantum Phenomena of Matter and Light by Design

HUI DENG (LSA Physics)

\$563,000 01/15/2012 - 12/31/2016

CAREER: Bound to Improve - Improved Estimates of the Glaciological Contribution to Sea Level Rise

JEREMY N BASSIS (Atm, Oceanic & Space Sci.)

\$572,085 09/01/2012 - 08/31/2017

CAREER: Improving the Development Process for Context-Aware Systems with Integrated Capture and Playback

MARK W NEWMAN (School of Information)

\$454,838 07/01/2012 - 06/30/2017

IPA Agreement for Farnam Jahanian

FARNAM JAHANIAN (COE EECS - CSE - SSRL)

\$5,235 09/01/2011 - 02/29/2012

NSF Postdoctoral Fellowship in Biology for FY 2011 - Daniel Allen

BRADLEY CARDINALE (Sch of Nat Resources & Environ)

\$10,000 04/01/2012 - 03/31/2014

Nelson/Nygaard Consulting Associates

Analysis of the Development and Implementation of Multimodal Transportation Hubs in Tysons Corner

SUSAN ZIELINSKI (UMTRI - SMART Program)

\$5,220 01/06/2012 - 06/30/2012

Neuralstem, Inc

Establishment of Clinical Trial Infrastructure

EVA L FELDMAN (Neurology Department)

\$54,925 02/01/2012 - 07/31/2012

Nissan Motor Company

Motor Vehicle Crash Investigation Study

STEWART C WANG (GSA - Acute Care Surgery (ACS))

\$150,058 01/01/2012 - 03/31/2012

Nokomis Foundation, Inc.

Health Care for Low-Income Women

LAURA LEIN (School of Social Work)

with EDITH C KIEFFER

LUKE SHAEFER

\$225,000 01/01/2012 - 12/31/2012

Novartis

A Multi-Center, Open-Label, Dose Escalation, Phase 1 Study of Oral LGH447 in Patients with Relapsed and/or Refractory Multiple Myeloma

MOSHE TALPAZ (CTO-Phase 1)

\$90,161 01/18/2012 - 10/31/2014

NTT DOCOMO USA LABS

Designing and Prototyping the Infinity Programmable Mobile Storage Service-Backend Enhancement

ZHUOQING MAO (COE EECS - CSE - SSRL)

\$84,200 01/01/2012 - 12/31/2012

Ohio State University, The

Recharge Germ Free- Ohio State university

KATHRYN A EATON (Lab Animal Medicine Unit)

\$1,815 12/22/2011 - 12/31/2013

Omeros Corporation

Effect of anti MASP-2 Treatment on the Development of Diabetic Neuropathy

EVA L FELDMAN (Neurology Department)

\$32,554 01/01/2012 - 12/31/2012

P3 North America, Inc

Configuration Management (CM): Cost reduction--Quality and Process Improvement

AMITABH SINHA (ROSS SCH Research Support)

\$1,499 01/01/2012 - 09/30/2012

Parexel International Corporation

A Multicenter, Randomized, Double-Blind, Phase 3 Study of Ramucirumab (IMC-1121B) Drug Product and Best Supportive Care (BSC) Versus Placebo and BSC as Second-Line Treatment in Patients With Hepatocellular Carcinoma Following First-Line Therapy With Sorafenib

JORGE A MARRERO (Int Med-Gastroenterology)

\$94,559 11/08/2011 - 12/31/2013

Pennsylvania State University

University Life Study: Multi-level Models of Co-Occurring Behaviors

MEGAN E PATRICK (Youth & Social Issues)

\$10,000 01/01/2012 - 06/15/2012

Pfizer, Inc.

Validation of Fracture Models for Regenerative Medicine - Part 2

KENNETH MICHAEL KOZLOFF (Orthopaedic Surgery)

\$108,229 12/01/2011 - 12/15/2012

Portland State University

Phoslactomyins: Biosynthesis & Activity

JANET L SMITH (Life Sciences Institute-Admin)

\$96,778 07/11/2011 - 06/30/2012

Research to Prevent Blindness, Inc.

Diabetic Retinal Sensory Neuropathy

THOMAS GARDNER (Ophthalmology & Visual Science)

\$100,000 01/01/2012 - 12/31/2012

Rosalind Franklin University of Medicine and Sciences

A randomized controlled trial of custom foot orthoses for the treatment of plantar heel pain

JAMES STANLEY WROBEL (Metabolism, Endo & Diabetes)

\$11,055 08/01/2011 - 03/31/2012

RTI International

NCS-R Data Delivery

BETH-ELLEN PENNELL (Survey Research Organization)

\$4,289 10/24/2008 - 04/30/2009

Sandia National Laboratories

WIMS Center Associate Partner - Sandia Corporation 9/1/2011 - 8/31/2012

YOGESH B GIANCHANDANI (COE EECS - ECE - WIMS - ERC)

\$6,000 09/01/2011 - 08/31/2012

Southwest Research Institute

Scientific Exploration of Jupiter with Juno-Jupiter Polar Orbiter / Phase E

SUSHIL K ATREYA (Atm, Oceanic & Space Sci.)

\$80,077 09/07/2011 - 09/30/2012

The Solar Orbiter Heavy Ion Spectrometer Phase B Bridge

SUSAN THERESE LEPRI (Atm, Oceanic & Space Sci.)

\$192,886 01/01/2012 - 04/30/2012

Target Corporation

Ross Leadership Development & Action Based Learning Initiatives

LYNN PERRY WOOTEN (ROSS SCH Research Support)

\$8,000 11/18/2011 - 12/31/2012

TG Public Benefit

Dissemination Strategy proposal for previously funded study: Reconciling Federal, State and Institutional Policies Determining Educational Access for Undocumented Students: Implications for Profession Practice

JOHN C BURKHARDT (SOE-CSHPE)

\$28,026 09/01/2011 - 08/31/2012

The Hartwell Foundation

Development of a new biomaterials platform to characterize protein delivery for pediatric orthopedics applications

PAUL H KREBSBACH (DENT Bio & Materials Science)

\$100,000 06/01/2012 - 05/31/2014

The Research Institute at Nationwide Children's Hospital

A Feeding Dynamic Intervention for Regulation of Energy Intake

JULIE C LUMENG (Child Behavioral Health)

with NIKO KACIROTI

\$12,476 08/04/2011 - 05/31/2012

Thoratec Corporation

REduce Driveline Trauma through Stabllization and Exit Site (RESIST)

FRANCIS D PAGANI (Department of Cardiac Surgery)

\$9,300 12/20/2011 - 07/14/2013

Tissue Genesis, Inc.

Treatment of Rotator Cuff Tears by Adipose-Derived Stem Cell Therapy

CHRISTOPHER LOUIS MENDIAS (Orthopaedic Surgery)

with ASHEESH BEDI

BLAKE J ROESSLER

\$329,935 09/01/2011 - 02/28/2013

Transportation, Department of-Federal Highway Administration

Safety Pilot Model Deployment - MOD 03

JAMES R SAYER (UMTRI-Human Factors)

with DAVID JAMES LEBLANC

JOHN M SULLIVAN

\$643,088 08/31/2011 - 02/17/2014

University of California - Lawrence Berkeley National Laboratory

Modeling Multiphysics Problems of the Electrochemical, Mechanical, and Thermal Aspects of the SEI Layer

ANN MARIE SASTRY (Mechanical Engineering)

\$320,000 03/01/2010 - 12/31/2012

University of California - Los Angeles

Hyperinsulinemia, Insulin Resistance and the Risk of BPH/LUTS Severity and Progression Over Time in Community Dwelling Black Men: The Flint Men?s Health Study

ARUNA V SARMA (Urology Surgery)

\$300,000 07/01/2011 - 06/30/2013

University of California - Santa Barbara

3D Hybrid Circuits for Advanced Information Processing

WEI LU (COE EECS - ECE - SSEL)

\$1,250,000 12/02/2011 - 11/30/2016

University of Colorado

Lung Genomics Research Consortium

FERNANDO JOSE MARTINEZ (Int Med-Pulm./Critical Care)

\$3,762 07/01/2011 - 08/31/2012

University of Houston

Neutron Compton Scattering as a probe of hydrogen bonded (and other) systems.

ANIRUDDHA DEB (LSA Chemistry)

\$11,770 10/01/2011 - 07/31/2012

University of Illinois at Chicago

A Novel Beta Cell Specific Microfluidic Perfusion and Imaging Device for Islet Potency Testing

ROBERT T KENNEDY (LSA Chemistry)

\$42,712 09/20/2011 - 06/30/2012

University of Miami, Florida, The

Diffuse X-ray emission from the Local galaxy (DXL)

SUSAN THERESE LEPRI (Atm, Oceanic & Space Sci.)

\$45,973 12/01/2011 - 02/28/2014

University of Pennsylvania

Fostering Self-Control: Strategies that Facilitate Working, Waiting, and Emotion Regulation

ETHAN F KROSS (LSA Psychology)

\$81,200 08/15/2011 - 08/14/2014

University of Virginia

University of Virginia (L. Pastore) DNA Request - SWAN Repository Recharge

DANIEL S MCCONNELL (Epidemiology Department)

\$40,000 09/26/2011 - 09/25/2014

University of Washington

Editorial Assistance for the Journal of Neurochemistry

STEPHEN K FISHER (Molecular & Behav Neurosc Inst)

\$15,000 01/01/2012 - 12/31/2012

University of Wisconsin

CEMRI on Structured Interfaces

RACHEL S GOLDMAN (Materials Science & Engin.)

\$360,000 09/15/2011 - 08/31/2017

UPS Foundation

UPS Foundation Support of M-STEM Academy S12

GUY A MEADOWS (CoE Undergraduate Education)

\$35,000 01/01/2012 - 12/31/2012

UT-Battelle, LLC

Consortium for Advanced Simulation of Light Water Reactors (CASL) (TN, NON-TAXABLE)

WILLIAM R MARTIN (Nuclear Eng & Radiological Sci)

with ANTON VAN DER VEN

GARY S WAS

MICHAEL D THOULESS

WEI LU

\$982,147 11/07/2011 - 12/31/2011

Vanderbilt University*Impact of Postoperative Management on Outcomes and healing of Rotator Cuff Repairs*

BRUCE S MILLER (Orthopaedic Surgery)

\$10,000 09/01/2011 - 05/31/2012

Various Sponsors*Recharge Pathology Core (PCAR) Services for Cold Spring Harbor*

JOHN ERBY WILKINSON (Lab Animal Medicine Unit)

\$610 07/11/2011 - 07/10/2013

Multidisciplinary Design Program Student Projects

A HARVEY HARVEY BELL, IV (CoE Undergraduate Education)

\$12,000 01/01/2012 - 12/31/2012

Recharge: Wheelchair Restraint Testing

LAWRENCE W SCHNEIDER (UMTRI-Biosciences)

\$21,415 03/01/2007 - 12/31/2012

Veterans Affairs, Department of*IPA-Theresa Ames*

JEFFREY L CURTIS (Int Med-Pulm./Critical Care)

\$15,836 10/01/2011 - 12/31/2011

IPA-Lisa McCloskey

JEFFREY L CURTIS (Int Med-Pulm./Critical Care)

\$6,792 10/01/2011 - 12/31/2011

Development of a Blood Pressure Symptom Subdomain for the SCI-QOL

DAVID TULSKY (Physical Medicine & Rehab Dept)

with ANNA L KRATZ

NOELLE E CARLOZZI

\$7,986 07/01/2011 - 09/30/2011

IPA Agreement_ Xiankui Sun_ FY12

DAVID J FINK (Neurology Department)

\$66,225 10/01/2011 - 09/30/2012

IPA Agreement_ Zetang Wu_ FY12

DAVID J FINK (Neurology Department)

\$50,960 10/01/2011 - 09/30/2012

IPA Agreement_ Jessica Meyers_ FY12

DAVID J FINK (Neurology Department)

\$59,033 10/01/2011 - 09/30/2012

IPA Agreement_ Shiyong Wang_ FY12

DAVID J FINK (Neurology Department)

\$29,129 10/01/2011 - 04/08/2012

IPA Agreement_ Pei-Pei Chiang_ FY12

DAVID J FINK (Neurology Department)

\$46,949 12/01/2011 - 09/30/2012

IPA-Munmun Chattopadhyay_FY12

MUNMUN CHATTOPADHYAY (Neurology Department)

\$77,076 10/01/2011 - 09/30/2012

IPA Agreement_VikramThakur_FY12

DAVID J FINK (Neurology Department)

\$50,429 10/01/2011 - 09/30/2012

IPA Sara Tallaksen-Greene

SARA TALLAKSEN-GREENE (Neurology Department)

\$76,306 10/01/2011 - 09/30/2012

IPA Youssef Naim

JOSEPH MICHAEL COREY (Neurology Department)

\$42,539 10/01/2011 - 09/30/2012

IPA David Irani

DAVID N IRANI (Neurology Department)

\$19,199 10/01/2011 - 09/30/2012

IPA Praveen Rao

PRAVEEN KUMAR RAO (Neurology Department)

\$72,565 10/01/2011 - 09/30/2012

IPA Agreement_Stephen Lalor_FY12

BENJAMIN M SEGAL (Neurology Department)

\$56,662 10/01/2011 - 09/30/2012

IPA Phillip L. Campbell

ALISA E KOCH (Int Med-Rheumatology)

\$39,158 10/01/2011 - 09/30/2012

IPA Jeffrey H. Ruth

JEFFREY H RUTH (Int Med-Rheumatology)

\$40,241 10/01/2011 - 09/30/2012

IPA Mohammad A. Amin

MOHAMMAD AMIN (Int Med-Rheumatology)

\$45,786 10/01/2011 - 09/30/2012

IPA Faith Strickland

BRUCE C RICHARDSON (Int Med-Rheumatology)

\$54,689 10/01/2011 - 09/30/2012

IPA Sushma Yarlagadda

BRUCE C RICHARDSON (Int Med-Rheumatology)

\$41,311 10/01/2011 - 09/30/2012

VA IPA for Jill Bayliss

GRACE L SU (Int Med-Gastroenterology)

\$52,871 10/01/2011 - 09/30/2012

VA IPA for Maria Mao

DUYEN DANG (Int Med-Gastroenterology)

\$54,929 10/01/2011 - 09/30/2012

VA IPA for B Vibbart 2011-2012

GRACE L SU (Int Med-Gastroenterology)

\$33,383 10/01/2011 - 09/30/2012

VA IPA for Sybil Boone 2011-2012

GRACE L SU (Int Med-Gastroenterology)

\$42,526 10/01/2011 - 09/30/2012

VA IPA for Elizabeth Haak 2011-2012

GRACE L SU (Int Med-Gastroenterology)

\$47,472 10/01/2011 - 09/30/2012

IPA Kevin Carbajal

MARINA MATA (Neurology Department)

\$16,521 10/01/2011 - 09/30/2012

IPA - Jamie Ann Miller 2012

NICOLAAS BOHNEN (Department of Radiology)

\$40,692 10/01/2011 - 09/30/2012

IPA - Cyrus Sarosh 2012

NICOLAAS BOHNEN (Department of Radiology)

\$30,408 10/01/2011 - 09/30/2012

IPA Extension Margaret Howes

MARCIA ANN VALENSTEIN (Psych HlthSvc Outcome Research)

\$23,415 10/01/2011 - 09/30/2012

IPA, Freeborn Rwere

LUCY WASKELL (Anesthesiology Department)

\$48,060 10/01/2011 - 09/30/2012

IPA, Williams, David A.

DAVID A WILLIAMS (Anesthesiology Department)

\$12,137 10/01/2011 - 09/30/2012

IPA Nicole Lee Exe

ANGELA TSAI FAGERLIN (Int Med-General Medicine)

\$30,524 11/01/2011 - 10/31/2012

IPA Evan Milton

JOHN D PIETTE (Int Med-General Medicine)

\$7,917 10/01/2011 - 03/31/2012

VA IPA - Tina Chen FY12

CHRISTINE T CIGOLLE (IntMed-Geri & Palliative Med.)

\$6,120 12/01/2011 - 09/30/2012

RECHARGE MIL VA Sponsor

MICHAEL J WELSH (Cell and Developmental Biology)

\$1,620 07/11/2011 - 06/30/2012

IPA Mary A M Rogers

SANJAY K SAINT (Int Med-General Medicine)

\$31,254 12/01/2011 - 09/30/2012

IPA Michael Todd Greene

SANJAY K SAINT (Int Med-General Medicine)

\$19,477 12/01/2011 - 09/30/2012

IPA Mohammed Usman Kabeto

KENNETH M LANGA (Int Med-General Medicine)

\$21,469 12/01/2011 - 09/30/2012

Wayne County Business Development Corporation (WCBDC)

Wayne County Industry and Labor Profile

ROLAND W ZULLO (IRLEE)

with DONALD R GRIMES

YUANLEI ZHU

\$50,000 12/19/2011 - 05/31/2012

Wayne State University

Hydrocortisone and Extubation - SubProject Under Neonatal Research Network Umbrella Project

JOHN D E BARKS (Pediatrics-Neonatal/Perinatal)

\$3,822 04/01/2011 - 03/31/2012

Woods Hole Oceanographic Institute

Improving Attachments of Non-invasive Bio-logging tags on Cetaceans

ALEX SHORTER (Mechanical Engineering)

\$80,000 09/01/2011 - 08/31/2012

Yale University

Assessing hearing conservation effectiveness

RICHARD L NEITZEL (Environmental Health Sciences)

\$81,886 09/01/2011 - 08/31/2012

Young Innovations

Dental Hygiene Student Perceptions of Prophylaxis Angles

JANET SUE KINNEY (DENT Periodontics and Oral Med)

\$230 09/01/2011 - 02/29/2012