

AWARDS ESTABLISHED
 Research and Other Sponsored Activities
 December 1, 2009 through December 31, 2009

Received by the Regents
 January 21, 2010

The awards detailed in this list were established December 1, 2009 through December 31, 2009. The dollar values depict the best available estimate of the funding the University should receive over the life of the award. These values may be modified, as additional data become available relative to future funding prospects. These modifications are not reported in the attached list. As a result, the dollar values of awards presented in this list will differ from the year-end totals. The full amount of an award is recorded in the year in which it was established. Often these funds are expended over several years, making comparisons between awards and expenditures somewhat misleading. Research expenditures are presented here to provide a trend line for the current fiscal year.

	Number of Awards FY 2009	Number of Awards FY 2010	% Change	Value of Awards FY 2009	Value of Awards FY 2010	% Change
Total Awards Processed (December)	147	175	19.1%	\$36,280,343	\$36,732,990	(1.3%)
Research Awards	106	127	19.8%	\$33,821,571	\$31,469,801	(7.0%)
Research Training	3	9	200.0%	\$479,957	\$955,278	99.0%
Other Sponsored Activity	38	39	(2.6%)	\$1,978,815	\$4,307,911	117.7%
<hr/>						
Total Awards Processed Fiscal Year to Date	1,426	1,713	20.1%	\$592,062,979	\$67,0527,970	13.3%
Research Awards	1,040	1,345	29.3%	\$533,664,060	\$627,123,743	17.5%
Research Training	51	77	51.0%	\$15,715548	\$13,398,784	(14.7%)
Other Sponsored Activity	335	291	(13.1%)	\$42,683,371	\$30,005,442	(29.7%)

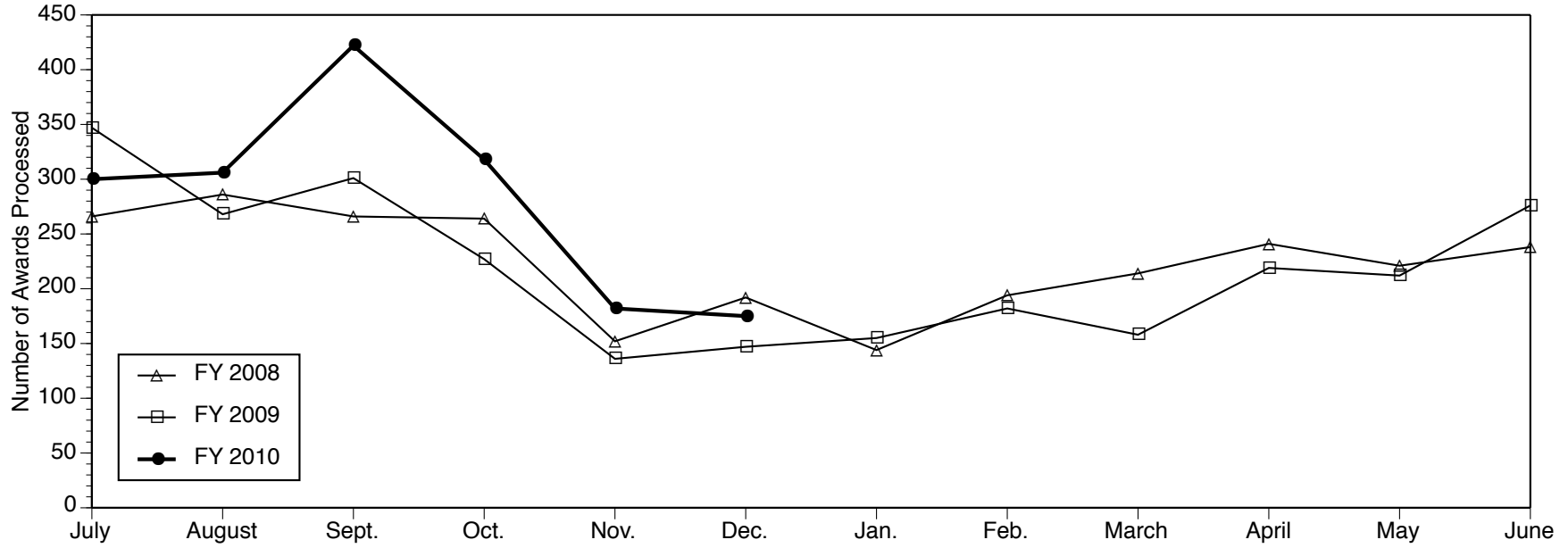
As in the November report the dollar value of total awards processed has decreased when compared with the previous year although at a smaller percentage. This decrease is caused by fewer larger awards processed in December 2009 when compared with December 2008. Year-to-date numbers and values continue to be in very strong positive territory.

----- RESEARCH EXPENDITURES -----

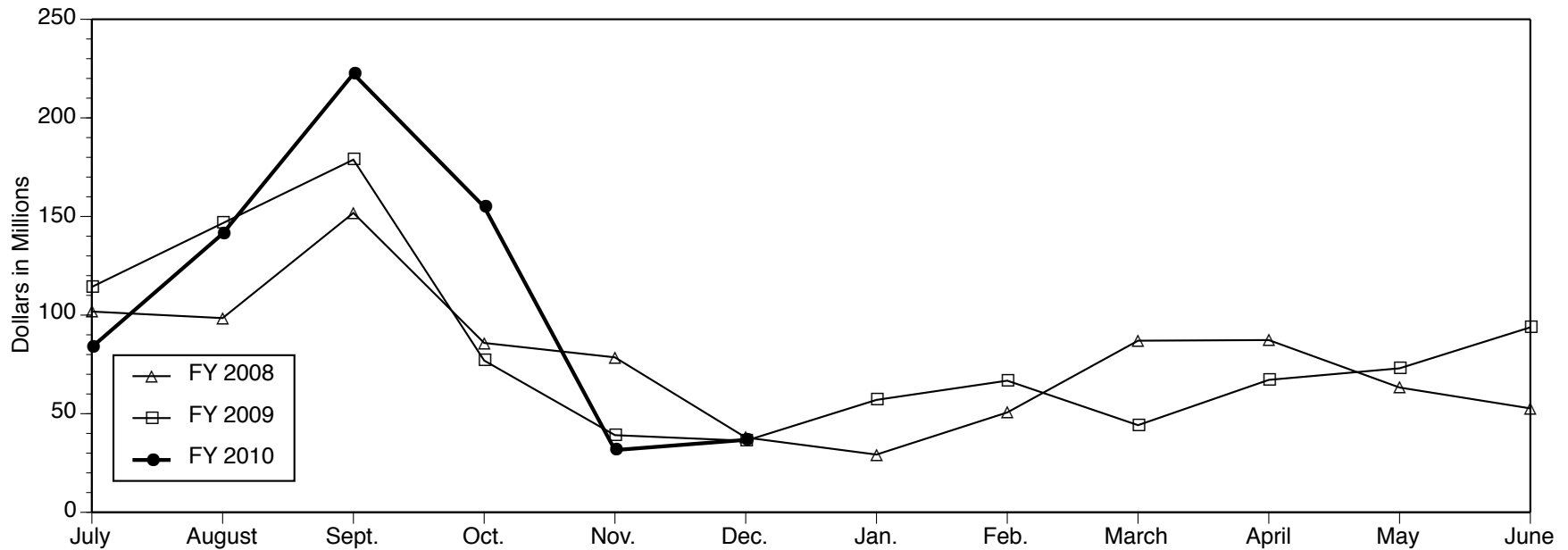
	Federal Expendable Restricted	Other Funds	Total Expenditures
November 2009	\$302,875,175	\$150,435,097	\$453,310,273
November 2008	\$261,605,309	\$139,690,828	\$401,296,137
Percent Change	15.8%	7.7%	13.0%

Source: Division of Research Development and Administration

Number of Awards Processed



Dollar Value of Awards Processed



Data Source: Division of Research Development and Administration

AWARDS ESTABLISHED FOR RESEARCH AND OTHER SPONSORED ACTIVITIES

December 01, 2009 through December 31, 2009

The awards listed here by direct sponsor were established during the month designated in the heading above. For each award, the listing includes the award title, the principal investigator(s), the proposal administrative department, participating investigators with specified effort, the estimated amount awarded for the award period, and the estimated award period.

3M (Minnesota Mining and Manufacturing Company)

Investigation of High Pressure Plasmas for Treatment of Porous Materials

MARK KUSHNER (COE EECS - ECE - Rad)

with JOHN EDISON FOSTER

\$70,000 12/01/2009 - 12/31/2010

Alion Science and Technology

Supplement: Multi-modal Information Exchange and Dynamic Adaptation

NADINE BARBARA SARTER (Center for Ergonomics)

\$31,230 10/01/2009 - 12/31/2009

American Cancer Society

Influence of Reimbursement on Androgen Deprivation Use for Prostate Cancer

VAHAKN BEDIG SHAHINIAN (Int Med-Nephrology)

with JAMES E MONTIE

\$534,000 01/01/2010 - 12/31/2012

American Federation for Aging Research

Summer Research Training in Aging for Medical Students - AFAR Supplement 2009

JEFFREY B HALTER (Int Med-Geriatric Medicine)

\$14,994 07/01/2009 - 06/30/2010

American Heart Association, Inc.

Cellular stress responses associated with coagulation factor VIII expression

JYOTI DHAR MALHOTRA (Biological Chemistry Dept)

\$308,000 01/01/2010 - 12/31/2013

American Heart Association, Midwest Affiliate

Heterocellular Interactions in Arrhythmogenic Right Ventricular Cardiomyopathy

JOSE JALIFE (Int Med-Cardiology)

\$52,000 01/01/2010 - 12/31/2011

Mechanisms by which the protein kinase IKKi regulates body weight and energy expenditure

ALAN R SALTIEL (Life Sciences Institute-Admin)

\$52,000 01/01/2010 - 12/31/2011

The Mechanism and Regulation of H₂S Biogenesis by Cystathionine gamma-Lyase

RUMA BANERJEE (Biological Chemistry Dept)

\$95,224 01/01/2010 - 12/31/2011

Biodegradable Prolate Spheroid Particles for Vascular-Targeted Drug Delivery Application in Atherosclerosis

LOLA ENIOLA-ADEFESO (Chemical Engineering Dept)

\$52,000 01/01/2010 - 12/31/2011

American Iron and Steel Institute

Development of a graduate level course on Advanced Steels for Automobiles

PANKAJ K MALLICK (Dbn-Col of Eng & Com Sci-CLAMP)

\$15,000 10/01/2009 - 09/30/2010

American Physical Society

PLANNING FUNDS FOR A NEW STUDY ABROAD FACILITY IN GENEVA, SWITZERLAND IN AFFILIATION WITH THE EUROPEAN LABORATORY FOR PARTICLE PHYSICS

MYRON K CAMPBELL (LSA Physics)

\$10,000 12/01/2009 - 11/30/2010

Amgen, Inc.

Anti-Sclerostin Antibody for Treatment of Periodontal Disease

WILLIAM V GIANNIBILE (DENT Periodontics and Oral Med)

\$149,354 11/25/2009 - 11/24/2010

New Fluorination Reactions for Organic Synthesis

MELANIE S SANFORD (LSA Chemistry)

\$25,000 02/01/2010 - 02/28/2011

Arbor Research Collaborative For Health

End Stage Renal Disease Measures

JOHN D KALBFLEISCH (Biostatistics Department)

with DOUGLAS E SCHAUBEL

JACK WHEELER

JOSEPH M MESSANA

MARC NORMAN TURENNE

RAJIV SARAN

RICHARD A HIRTH

\$1,007,121 09/30/2009 - 09/29/2010

Blue Cross Blue Shield of Michigan Foundation

Quality Collaboratives to Improve Prostate Cancer Care in the State of Michigan: A Pilot and Feasibility Study

DAVID CHRISTOPHER MILLER (Urology Surgery)

with JAMES E MONTIE

\$10,000 07/01/2010 - 06/30/2011

Boeing Company, The

Boeing Company Support of Collaborative Center in Aeronautical Sciences (CCS)

WEI SHYY (Aerospace Engineering)

\$50,000 01/01/2007 - 12/31/2009

Bristol-Myers Squibb Company

Use of CTLA4-Ig (Abatacept) in an in vitro model of angiogenesis

ALISA E KOCH (Int Med-Rheumatology)

JEFFREY H RUTH (Int Med-Rheumatology)

\$79,950 12/04/2009 - 12/03/2010

Carnegie Institution of Washington

Fast Imaging Plasma Spectrometer (FIPS) in Support of the Energetic Particle and Plasma Spectrometer (EPS) Investigation for the MESSENGER Mission to Mercury: Phase E FY09 Supplement

GEORGE GLOECKLER (Atm, Oceanic & Space Sci.)

with THOMAS H ZURBUCHEN

\$90,000 09/14/2009 - 09/30/2011

Casey Family Program Foundation

Detroit Center for Family Advocacy: An Innovative Model to Reduce the Number of Children in Foster Care

VIVEK S SANKARAN (Law Clinical Activity)

\$33,000 09/01/2009 - 12/31/2009

Celgene Corporation

A Phase 1/2 Multi-Center, Randomized, Open Label Dose Escalation Study to Determine the Maximum Tolerated Dose, Safety, and Efficacy of CC-4047 Alone or in Combination with Dexamethasone in Patients with Relapsed and Refractory Multiple Myeloma who have Received Prior Treatment that Includes Lenalidomide and Bortezomib

ANDRZEJ J JAKUBOWIAK (Int Med-Hematology/Oncology)

\$808,700 11/23/2009 - 12/31/2014

Centocor, Inc.

2009.052: An Open-Label, Multicenter, Phase 2 Study of Single-agent CNTO 888 for Treatment of Subjects with Metastatic Castrate-Resistant Prostate Cancer

KENNETH J PIENTA (Int Med-Hematology/Oncology)

\$607,495 12/02/2009 - 06/07/2012

Chimerix, Inc

Indole Nucleosides and Pyrrolopyrimidines as Antiviral Drugs

JOHN C DRACH (DENT Bio & Materials Science)

\$69,622 12/07/2009 - 06/06/2010

Cold Spring Harbor Lab

Epigenetic changes and their impacts on breast cancer progression and initial susceptibility

MAX S WICHA (Int Med-Hematology/Oncology)

\$218,652 09/30/2009 - 08/31/2010

Community Foundation of Greater Flint

The Status of Women and Girls in Genesee County

MARGARET F KAHN (Flint Political Science)

\$750 01/01/2010 - 06/30/2010

Concerned Parents for AIDS Research

A Search for a Viral Cause of AIDS Lymphoma

MARK H KAPLAN (Int Med-Infectious Diseases)

\$60,000 11/01/2009 - 10/31/2010

Defense, Department of-Air Force, Department of the

Experimental Investigation of Separation and Transition on Low Reynolds Number Wings

WEI SHYY (Aerospace Engineering)

\$75,000 11/20/2009 - 11/19/2010

Defense, Department of-Navy, Department of the

The Effects of Nanoparticles on Tribology of Lubricants

ANGELA VIOLI (Mechanical Engineering)

\$100,000 01/30/2009 - 01/29/2010

Hull-Relative Feature-Based Navigation Demonstration with the HAUV

RYAN M EUSTICE (Naval Arch & Marine Dept)

\$231,273 10/01/2009 - 09/30/2011

Delta Dental Fund

Bridging Understanding: Improving Health Communication Strategies and Oral Health Literacy

MATHILDE C PETERS (DENTCariology,Restor Sci &Endo)

\$30,000 11/05/2009 - 11/04/2010

Detroit, City of

Adaptive Reuse Plans for Two Vacant Detroit Public School Buildings RFP Response

CRAIG LAWRENCE WILKINS (Coll of Arch & Urban Planning)

with ERIC R DUEWEKE

\$48,450 11/23/2009 - 02/28/2010

Duke University

Phosphodiesterase-5 Inhibition to Improve Clinical Status And Exercise Capacity in Diastolic Heart Failure Study acronym: RELAX

TODD M KOELLING (Int Med-Cardiology)

\$150,267 10/01/2009 - 02/28/2011

Energy, Department of

Techniques for Voltage Control and Transient Stability Assessment

IAN HISKENS (COE EECS - ECE - Con)

\$413,534 11/01/2009 - 10/31/2011

Environmental Protection Agency

Center for Engineering Excellence Through Hybrid Technology

ZORAN S FILIPI (Mechanical Engineering)

with ALBERT J SHIH

DIONISSIOS N ASSANIS

PHILLIP E SAVAGE

\$1,345,424 11/01/2009 - 10/31/2012

Epilepsy Research Foundation

Regulation of migration by the voltage-gated sodium channel Beta 1 subunit - Postdoctoral Fellowship

LORI L ISOM (Pharmacology Department)

\$45,000 01/01/2010 - 12/31/2010

Evans, John D., Foundation

Transportation Technology Forum

HENRY D BAIER (Assoc. V-P Facilities &Ops)

\$50,000 10/07/2009 - 09/30/2010

ExxonMobil Corporation

Greening Brownfield Properties

MICHAEL R MOORE (SNRE School Operations)

\$75,000 04/30/2009 - 12/31/2010

Ford Motor Company

Hydrogen Storage Engineering R&D

DONALD JASON SIEGEL (Mechanical Engineering)

\$553,392 10/01/2009 - 10/30/2013

Genentech, Inc.

Application of capillary viscometry for measuring viscosities of mAb solutions

MARK A BURNS (Chemical Engineering Dept)

\$120,000 12/15/2009 - 12/14/2010

General Motors Company

Data Analysis for Driving Style Characterization and Its Impact on Fuel Economy

CAROL ANN FLANNAGAN (UMTRI-Biosciences)

\$23,477 11/01/2009 - 04/30/2010

General Motors Corporation

Modeling, Analysis and Optimization of Ultrasonic Welding Process using ABAQUS Phase II

ELIJAH KANNATEY-ASIBU JR (Mechanical Engineering)

\$30,442 10/01/2009 - 12/31/2010

General Motors Holdings, LLC

2009 Additional Funds to Jack Hu's GM/UM AVM CRL GRANT N010562/397768

SHIXIN JACK HU (ME GM)

\$425,000 01/01/2009 - 12/31/2013

\$400K Addition to GM/UM AVM CRL_Hu Grant_N010887_12-09

SHIXIN JACK HU (ME GM)

\$400,000 01/01/2009 - 12/31/2013

George Washington University

Diabetes Prevention Program Outcomes Study (DPPOS) - Phase 2

WILLIAM H HERMAN (Metabolism, Endo & Diabetes)

\$36,587 04/01/2009 - 01/31/2010

GlaxoSmithKline (GSK)

Metabolomic Analysis - GSK

CHRISTOPHER W BEECHER (Ctr fr Translational Pathology)

\$132,030 12/15/2009 - 11/11/2010

Google, Inc.

PowerTutor: A Tool for Android Application Power Modeling

ROBERT DICK (COE EECS - ECE - SSEL)

\$50,000 09/01/2009 - 08/31/2010

Gore, W. L., & Associates, Inc.

Evaluation of the GORE Conformable TAG Thoracic Endoprosthesis for Treatment of Traumatic Transection of the Descending Thoracic Aorta

DAVID M WILLIAMS (Department of Radiology)

with GILBERT R UPCHURCH JR
HIMANSHU J PATEL

\$65,088 12/02/2009 - 09/30/2014

An Evaluation of the GORE Conformable TAG Thoracic Endoprosthesis for the Primary Treatment of Aneurysm of the Descending Thoracic Aortic TAG 08-03

HIMANSHU J PATEL (Cardiac Surgery Section)

with DAVID M WILLIAMS
GILBERT R UPCHURCH JR

\$111,024 11/20/2009 - 09/30/2016

Harvard Pilgrim Health Care

Improving Primary Care to Prevent Childhood Obesity (Administrative Supplement F023455)

LISA PROSSER (Pediatrics-Ambulatory Care Pgm)

\$11,046 09/30/2009 - 09/29/2010

Harvard University

Simple Verified Distributed Preservation: A policy Based Archiva Replication System for Libraries, Archives, and Museums Using a Virtual Private LOCKSS Network

NANCY Y MCGOVERN (ICPSR-Archival Development)

\$112,464 10/01/2009 - 09/30/2011

Health and Human Services, Department of-Agency for Health Care Research and Quality

IT Implementation by Cognitive Engineering of Organizational Routines

LEE A GREEN (Department of Family Medicine)

with DONALD E NEASE JR

\$1,199,137 09/30/2009 - 07/31/2012

Health and Human Services, Department of-National Institutes of Health

Wnt-responsive Adrenocortical Cells in Organ Maintenance and Cancer

GARY D HAMMER (Metabolism, Endo & Diabetes)

with THOMAS J GIORDANO

\$1,511,081 12/01/2009 - 11/30/2014

Neural Circuits and Synapses for Early Visual Processing

JONATHAN B DEMB (Ophthalmology & Visual Science)

\$1,401,808 12/01/2009 - 11/30/2013

Neurodevelopmental Underpinnings of Rodent Anxiety and Depressive Behavior

SARAH M CLINTON (Molecular & Behav Neurosc Inst)

\$169,693 01/01/2010 - 12/31/2011

Collaborative Pediatric Critical Care Research Network

THOMAS PATRICK SHANLEY (Pediatrics-Intensive Care)

with YONG Y HAN

\$1,339,763 12/24/2009 - 11/30/2014

Identification of Biomarkers for Progressive Diabetic Nephropathy

MATTHIAS KRETZLER (Int Med-Nephrology)

\$93,142 12/15/2009 - 11/30/2010

Molecular Predictors of Progressive Renal Failure in the Chronic Renal Insufficiency Cohort

MATTHIAS KRETZLER (Int Med-Nephrology)

\$105,792 12/08/2009 - 11/30/2010

Molecular Mechanisms of Leptin Receptor/Jak2 Action (R37 DK056731)

MARTIN MYERS (Metabolism, Endo & Diabetes)

\$84,639 12/21/2009 - 02/28/2010

3-Dimensional Proteolytic Regulation of Adipose Tissue Development and Function

TAE-HWA CHUN (Metabolism, Endo & Diabetes)

\$21,648 12/14/2009 - 02/28/2010

Pain and Musculoskeletal Disorders: Translating Scientific Advances into Practice

DANIEL J CLAUW (Anesthesiology Department)

\$73,000 12/01/2009 - 11/30/2010

Immunoglobulin Activation of Fibroblasts

TERRY SMITH (Ophthalmology & Visual Science)

\$421,633 09/01/2009 - 08/31/2010

T32 DK007245-33 Summer Supplemental - Training Program in Endocrinology and Metabolism

ARIEL L BARKAN (Metabolism, Endo & Diabetes)

\$47,265 07/01/2009 - 06/30/2010

Medical Marvels Interactive Translational Research Experience (MITRE)

MICHAEL D FETTERS (Department of Family Medicine)

\$19,282 09/30/2009 - 09/29/2010

Immune Activation of Fibroblasts

RAYMOND DOUGLAS (Ophthalmology & Visual Science)

\$71,770 08/31/2009 - 12/31/2009

Adipose Tissue Macrophage Polarization and Its Influence on Adipocyte Function

CAREY NIEN-KAI LUMENG (Pediatrics-Pulmonary Medicine)

\$38,058 12/14/2009 - 02/28/2010

Cellular Pathophysiology of Acute Renal Failure

JOEL M WEINBERG (Int Med-Nephrology)

\$85,238 12/07/2009 - 12/06/2010

Novel Methods for Hemodialysis Access Evaluation

WILLIAM F WEITZEL III (Int Med-Nephrology)

\$53,200 12/17/2009 - 11/30/2010

Using Systems Biology to Understand Islet Adaptation and Failure Diabetes

CHARLES BURANT (Metabolism, Endo & Diabetes)

\$77,001 12/03/2009 - 02/28/2010

Podocyte Stress, Hypertrophy, and Depletion

ROGER C WIGGINS (Int Med-Nephrology)

\$70,379 12/17/2009 - 12/16/2010

Molecular Genetics of Hox Genes and Kidney Development

DENEEN WELLIK (Int Med-Molecular Med&Genetics)

\$80,340 12/21/2009 - 11/30/2010

Thyocyte Protein Transport to the Cell Surface

PETER ARVAN (Metabolism, Endo & Diabetes)

\$77,422 12/23/2009 - 03/31/2010

Circuitry and Modulation of the Circadian Clock Network of D. melanogaster

ORIE SHAFER (LSA Molec./Cell./Develop. Bio)

\$249,000 12/01/2009 - 10/31/2012

Nitroalkenes and Blood Pressure Regulation - Minority Supplement

YUQING EUGENE CHEN (Int Med-Cardiology)

with MILTON HARRISON HAMBLIN

\$24,783 12/15/2009 - 03/31/2010

Young Women's Relationships, Contraception, and Unintended Pregnancy - Pregnancy Scores Supplement

JENNIFER S BARBER (Pop Studies-Research)

with YASAMIN YOKO KUSUNOKI

\$234,339 09/30/2009 - 09/29/2011

Structure and Function of a Signal-Regulated Development Enhancer

SCOTT E BAROLO (Cell and Developmental Biology)

\$49,944 12/20/2009 - 11/30/2010

HealthSCOPE Benefits

HealthSCOPE Benefits

DEE W EDINGTON (School of Kinesiology)

\$150,000 11/01/2009 - 10/31/2012

Henry M. Jackson Foundation for the Advancement of Military Medicine, Inc (HJF)

1st Supplement to the Modifiable Risk and Protective Factors for Suicidal Behaviors in the US Army (F023412)

STEVEN G HEERINGA (SRC-Survey Methodology Prog)

\$5,300,000 09/30/2009 - 09/29/2011

Hewlett, William and Flora, Foundation, The

2010 - 2011 African Health OER Network

THEODORE ALEXANDER HANSS JR (MSA Enabling Technologies)

with N CARY ENGLEBERG

\$624,401 11/16/2009 - 11/16/2011

Huron Valley Public Schools

Smart Kids and Healthy Kids

WEIYUN CHEN (School of Kinesiology)

with PATRICIA VANVOLKINBURG

\$220,546 07/01/2009 - 06/30/2012

ICON Clinical Research, Inc.

A Phase 2b multicenter, randomized, comparative trial of UK-453,061 versus etravirine in combination with darunavir/ritonavir and a nucleotide/nucleoside reverse transcriptase inhibitor for the treatment of antiretroviral experienced HIV-1 infected subjects with evidence of NNRTI resistant HIV-1.

JAMES RIDDELL IV (Int Med-Infectious Diseases)
\$40,506 10/23/2009 - 10/22/2012

A Phase 2b/3 open-label rollover study for subjects discontinuing from the UK-453,061 protocols for the treatment of HIV-1 infected subjects.

JAMES RIDDELL IV (Int Med-Infectious Diseases)
\$4,988 10/23/2009 - 10/22/2012

IMA Recreational Association

Community Engagement Process for the Whaley Park Project - Year Two

JONATHAN H JAROSZ (Flint Ctr/Environmental Rsch)
\$3,500 10/01/2009 - 01/31/2010

Indiana University

Biomed Studies & Instrumentation in Proteomics/Glycomics

ALAN J HUNT (Biomedical Engineering)
\$30,400 09/01/2008 - 12/31/2009

Ingham, County of

Title XV Breast and Cervical Cancer Control Program

EMILY K MEULEMAN (School of Nursing)
\$10,000 10/01/2009 - 09/30/2010

Institute for Advanced Study

Institute for Advanced Study

HENRIETTE DINA-MARIA ELVANG (LSA Physics)
\$30,352 09/01/2010 - 12/31/2010

Interior, Department of the

Evaluating the Negative Effect of Benthic Egg Predators on Bloater Recruitment in Northern Lake Michigan

JAMES STEPHEN DIANA (Sch of Nat Resources & Environ)
\$72,048 07/01/2009 - 12/31/2010

USGS-Forecasting climate change induced effects on recreational and commercial fish populations in the Great Lakes

ALLEN BURTON (SNRE CILER)
\$281,563 10/16/2009 - 12/31/2011

Workshop on Land Use/Land Cover Change and the Carbon Cycle

DANIEL G BROWN (Sch of Nat Resources & Environ)
\$21,230 06/08/2009 - 06/09/2009

Japan Business Society of Detroit Foundation

Exploring UMMA's Japanese Art Collections in 2010

RAYMOND A SILVERMAN (Museum of Art)
\$1,000 01/01/2010 - 12/31/2010

Jet Propulsion Laboratory

Delta-doped Electron Multiplying CCDs for Particle Imaging and Photon Counting

THOMAS H ZURBUCHEN (Atm, Oceanic & Space Sci.)

\$30,000 11/19/2009 - 09/30/2010

Kentucky Educational Television

Formative Evaluation of Prototypes for GED2012

JEROME JOHNSTON (RCGD-Communication/Education)

\$32,806 05/01/2009 - 12/31/2009

Kresge Foundation

Rebuilding Detroit Schools: What the Motor City Can Learn From the Big Easy

TAMAR R CHARNEY (Michigan Radio)

\$20,000 01/01/2010 - 12/31/2010

Lockheed Martin Corporation

Model Data for NonLinear Force-Free Extrapolations

WARD B MANCHESTER IV (Space Physics Research Lab)

\$20,068 05/31/2009 - 12/31/2009

Masimo Corporation

Acoustical Respiratory Rate Monitoring Clinical Research Plan

SATYA KRISHNA RAMACHANDRAN (Anesthesiology Department)

\$30,035 12/05/2009 - 02/28/2010

Medical Cyberworlds, Inc

Modeling Professional Attitudes and Teaching Humanistic Communication in VR (m-PathicVR)

MICHAEL D FETTERS (Department of Family Medicine)

with ANANDA SEN

\$37,920 08/11/2009 - 07/31/2010

Medimmune, Inc.

Effects of novel pharmacological inhibitors or activators on primary human fibroblast synthetic properties.

CORY M HOGABOAM (Pathology Department)

\$58,424 12/01/2009 - 11/30/2010

Michigan, State of, Community Health, Department of

Mental Health Assessment Project

BRANT E FRIES (Institute of Gerontology)

\$198,000 10/01/2009 - 09/30/2010

Michigan, State of, Education, Department of

Great Start Readiness Program Competitive Grant

MARY JO FINNEY (Flint ECDC)

\$108,800 10/01/2009 - 09/30/2010

Michigan, State of, Energy, Labor and Economic Growth, Department of

Reducing Worker Risk of Overexertion Injuries and Illnesses Using Engineering and Management Models

THOMAS J ARMSTRONG (Center for Ergonomics)

with RANDALL A RABOURN
SHERYL S ULIN

\$70,000 10/01/2009 - 09/30/2010

Bridges to Success Year 4 (2009 - 2010)

TENDAJI W GANGES (Flint Educational Opportunity)

\$145,000 10/01/2009 - 09/30/2010

Transitions Program Year 4 (2009-2010)

TENDAJI W GANGES (Flint Educational Opportunity)

\$124,349 10/01/2009 - 09/30/2010

Michigan Pursuing Our Dreams (M-POD) 2009-2010

JOHN H MATLOCK (Ofc Acad Multicultural Init)

\$126,000 10/01/2009 - 09/30/2010

Leaders and Best (LAB) Program

JOHN H MATLOCK (Ofc Acad Multicultural Init)

\$126,500 10/01/2009 - 09/30/2010

Michigan, State of, Environmental Quality, Department of

Development of GIS-based Decision Support Tools for Evaluation of Great Lakes Lakebed Alterations

EDWARD S RUTHERFORD (Sch of Nat Resources & Environ)

\$500 01/01/2009 - 03/31/2010

Michigan, State of, Natural Resources, Department of

Development of a Digital Water Atlas: Spatial and Tabular Data, Assessment and Characterizational tools, and Conservation Planning Guide for Michigan's Inland Waters

JAMES EDWARD BRECK (Sch of Nat Resources & Environ)

\$20,769 10/01/2009 - 12/31/2009

Refinement of the aquatic portion of Michigan's Wildlife Action Plan and development of tools to support the plan

LIZHU WANG (Sch of Nat Resources & Environ)

\$19,623 10/01/2009 - 12/31/2009

Michigan Tech Research Institute

Northslope Bathing Boat & Field Deployment

GUY A MEADOWS (Naval Arch & Marine Dept)

\$14,000 09/17/2007 - 09/30/2010

Mott, Charles Stewart, Foundation

The Launch Pad Student Business Hatchery Year 2 Renewal Grant

JOEL E RASH (Flint LAUNCH)

\$64,946 11/01/2009 - 10/31/2010

National Bureau of Economic Research

American State Constitutions: An Historical Analysis

AMY PIENTA (ICPSR-Archival Development)

\$10,000 07/01/2009 - 12/31/2009

National Childhood Cancer Foundation

Clinical Study Funding Rider Number 18746

MEGAN S LIM (Pathology Department)

\$3,000 03/01/2009 - 02/28/2010

National Endowment for the Humanities

Preservation and Access Virtual Education Laboratory for Digital Humanities

DAVID A WALLACE (School of Information)

with ELIZABETH YAKEL

LANCE THOMAS STUCHELL

MARGARET L HEDSTROM

PAUL L CONWAY

\$248,311 01/01/2010 - 12/31/2011

National Science Foundation

CAREER: Guided Sensing

CLAYTON D SCOTT (COE EECS - ECE - Cspl)

\$400,000 01/01/2010 - 12/31/2014

Michigan Biology Academy Scholars

DEBORAH E GOLDBERG (LSA Ecology & Evolutionary Bio)

\$599,999 04/01/2010 - 03/31/2014

NephCure Foundation

Nephrotic Syndrome Rare Disease Clinical Research Network

MATTHIAS KRETZLER (Int Med-Nephrology)

with AKINLOLU OLUSEUN OJO

LAWRENCE B HOLZMAN

PETER XUEKUN SONG

\$1,984,730 09/08/2009 - 09/07/2014

New York University

New York University Residential Faculty Research Fellowship

ALEXANDER D POTTS (LSA History of Art)

\$40,000 07/01/2009 - 12/30/2009

NextGen Aeronautics, Inc

Modeling wave propagation of a submerged fin

NAKHIAH C GOULBOURNE (Aerospace Engineering)

\$55,508 09/01/2009 - 03/30/2011

North Carolina, State of

North Carolina REACH II Translation Project: Resources for Enhancing Alzheimer?s Caregiver Health

LOUIS BURGIO (Institute of Gerontology)

\$25,000 10/01/2009 - 09/30/2010

Novartis

A multicenter, randomized, blinded study to assess safety and efficacy of pasireotide LAR vs octreotide LAR in patients with active acromegaly (SOM230C 2305 Amd2)

ARIEL L BARKAN (Metabolism, Endo & Diabetes)

\$187,091 10/20/2008 - 07/26/2010

Novo Nordisk A/S

PRO-PACT: Retrospective Prophylaxis Patient Case Collection (Protocol ID: F7HAEM-3695)

STEVEN W PIPE (Pediatrics-Hematology/Oncology)

\$6,350 12/10/2009 - 12/31/2010

NYCOMED GmbH

tchikwe - New PAF - Wed May 6 13:12:12 EDT 2009

MARC PETERS-GOLDEN (Int Med-Pulm./Critical Care)

\$250,000 12/01/2009 - 11/30/2011

Oakland Schools

Oakland Michigan Writing Project

LAURA JANE ROOP (School of Education)

\$29,739 07/01/2009 - 06/30/2010

Ohio State University, The

A Renewal Proposal for the Nanoscale Science and Engineering Center (NSEC) for Affordable Nanoengineering of Polymeric Biomedical Devices

RONALD G LARSON (Chemical Engineering Dept)

\$300,000 10/01/2009 - 09/30/2014

Pennsylvania Headache Center, P.C.

Interictal, Ictal and Post-treatment Adipocytokine Levels in Migraine

RONALD A WASSERMAN (Anesthesiology Department)

\$110,650 11/17/2009 - 08/31/2010

Pennsylvania State University

Energy Harvesting on Spacecraft Using Electrodynamic Tethers

BRIAN E GILCHRIST (COE EECS - ECE - Rad)

\$70,000 09/01/2009 - 08/31/2010

Pfizer, Inc.

Cognition, Medicare spending and mortality among the elderly

HELEN G LEVY (SRC-Hrs)

\$112,887 12/01/2009 - 11/30/2010

Pfizer Graduate Student Internship Program

GEORGE MICHAILIDIS (LSA Statistics)

\$19,278 09/01/2009 - 12/31/2009

Princeton University

Transmission dynamics of pertussis in the developing world

PEJ ROHANI (LSA Ecology & Evolutionary Bio)

\$150,000 09/01/2009 - 03/31/2012

Thermal Modeling, Management, and Optimization for High-Performance Integrated Circuit Testing

ROBERT DICK (COE EECS - ECE - SSEL)

\$22,495 09/01/2009 - 05/31/2010

Procter and Gamble Fund

Michigan LeaderShape Institute

SUSAN A WILSON (Student Activities and Leaders)

\$10,000 01/01/2010 - 12/31/2010

Purdue University

NEES Operations: FY2010 - FY2014

ANN S ZIMMERMAN (School of Information)

\$33,000 10/01/2009 - 09/30/2014

Reuters Limited

Surveys of Consumers Data Co-Branding and Distribution, 2010

RICHARD T CURTIN (SRC-Surveys of Consumers)

\$1,000,000 01/01/2010 - 12/31/2010

Reynolds, Christopher, Foundation, The

Christopher Reynolds Foundation - Cuba Project (FY10)

FRANK W THOMPSON (LSA Economics)

\$10,000 11/01/2009 - 10/31/2010

Roche Laboratories

Early Evaluation of the New Cobas 4800 System

DUANE W NEWTON (Pathology Department)

\$13,326 12/07/2009 - 02/07/2010

A Randomised, Double-Blind, Placebo Controlled, Parallel-Group, Multicenter Study to Evaluate the Efficacy and Safety of Two Doses of Ocrelizumab in Patients with Active Systemic Lupus Erythematosus

WILLIAM J MCCUNE (Int Med-Rheumatology)

\$4,600 04/01/2009 - 09/30/2009

Sandia National Laboratories

A Multisensor Fusion Approach to the Solution of Inverse Radiation Transport Problems

SARA A POZZI (Nuclear Eng & Radiological Sci)

\$65,000 12/01/2008 - 12/31/2010

Sanofi-Aventis Pharmaceuticals

Benign Prostatic Hyperplasia Registry Data Generation and Communications

JOHN THOMAS WEI (Urology Surgery)

with CATHERINE A SPINO

MORTON B BROWN

RODERICK J LITTLE

\$427,494 11/30/2009 - 12/31/2010

Scripps Research Institute, The

Genomics for kidney transplantation

RANDALL S SUNG (General Surgery Section)

\$27,000 09/01/2009 - 12/31/2010

SelectX Pharmaceuticals, Inc

Select X Pharmaceuticals Evalustion Cochlear Toxicity of SPX Aminoglycoside Compounds, Study 00001

YEHOASH RAPHAEL (Otorhinolaryngology Department)

\$144,993 01/01/2010 - 12/31/2010

Skillman Foundation

Rebuilding Detroit Schools: What the Motor City Can Learn From the Big Easy

STEPHEN SCHRAM (Michigan Radio)

\$20,000 01/01/2010 - 01/01/2011

Sloan, Alfred P., Foundation

A Longitudinal Study of the Professional Accomplishments and Personal Lives of Early-career Scientists

ROBERT J WILLIS (SRC-Hrs)

with BROOKE ROSE HELPPIE
MARTA MURRAY-CLOSE

\$50,000 01/01/2010 - 07/01/2010

Alfred P. Sloan Foundation Research Fellowship for Yang Zhang BR-4852

YANG ZHANG (Comp Med and Bioinformatics)

\$29,726 09/16/2009 - 09/15/2011

Alfred P. Sloan Research Fellowship in Mathematics

THOMAS FUN YAU LAM (LSA Mathematics)

\$50,000 09/15/2009 - 09/15/2011

Smithsonian Institution

Liana Diversity and Abundance on Ten Half-Hectare Plots in PDBFF (CTFS) and PPBIO Sites Near Brazil - CTFS Grants Program

ROBYN J BURNHAM (LSA Paleontology Museum)

\$15,000 12/01/2009 - 11/30/2011

Southwest Research Institute

JGITM (Jupiter Global Ionosphere Thermosphere Model): Development and Validation

STEPHEN W BOUGHER (Atm, Oceanic & Space Sci.)

\$65,000 12/01/2009 - 06/20/2010

Space Telescope Science Institute

The Star Formation Rate in Nearby Elliptical Galaxies

JOEL N BREGMAN (LSA Astronomy)

with PATRICK O SEITZER

\$91,281 11/01/2009 - 10/31/2011

Spencer Foundation

College Culture and Social Inequality

ELIZABETH ANN ARMSTRONG (LSA Sociology)

\$16,972 07/01/2009 - 05/31/2010

Syracuse University

A Prospective Model of Medicare Cost Trajectories - Subcontract with Syracuse University

VICKI A FREEDMAN (SRC-Psid)

\$36,000 10/01/2009 - 08/31/2010

Takeda Pharmaceuticals North America, Inc.

Role of Proinflammatory Mediators in MSU Induced Gout

ALISA E KOCH (Int Med-Rheumatology)

MOHAMMAD AMIN (Int Med-Rheumatology)

\$109,382 12/17/2009 - 06/17/2011

The Hartwell Foundation

Genetic determinates of arboviral neurovirulence

JANET R GILSDORF (Pediatrics-Infectious Diseases)

\$100,000 01/01/2010 - 12/31/2011

The Jackson Laboratory

Investigating the Biological Consequences of Aneuploidy on Early Embryogenesis

MARK T JOHNSON (Obstetrics and Gynecology Dept)

with THOMAS L SAUNDERS

\$342,070 09/25/2009 - 04/30/2010

Toyota Engineering & Manufacturing North America (TEMA)

Active sensing of the physical environment for autonomous systems

BENJAMIN KUIPERS (COE EECS - CSE - AI)

with SILVIO SAVARESE

\$95,000 01/01/2010 - 12/31/2010

Feasibility Study for Non-crystalline Surfaces for Efficient Combustion: Laser Fabricated Nanocrystalline Catalytic Surfaces for Pollutant-Free & Energy-Efficient Applications

JYOTIRMOY MAZUMDER (CoE Claims Lab)

\$15,000 12/15/2009 - 03/15/2010

Transportation, Department of-Other

Influence of Aviation Aerosols and Contrails on Cirrus Clouds and Anthropogenic Forcing

JOYCE E PENNER (Atm, Oceanic & Space Sci.)

\$598,676 12/07/2009 - 12/31/2012

United States Civilian Research and Development Foundation

Hydrodynamic Models of Gas Filtration and Instabilities Associated with Methane Release from Natural Hydrates

OLEG ZIKANOV (Dbn Coll of Eng-Mechanical Eng)

\$16,000 12/01/2009 - 11/30/2011

United Therapeutics Corporation

TDE-DU-202/ DISTOL-EXT: Digital Ischemic Lesions in Scleroderma Treated with Oral Treprostinil Diethanolamine: An open-label multicenter extension study

ELENA SCHIOPU (Int Med-Rheumatology)

with KRISTINE PHILLIPS

\$272,603 11/12/2009 - 10/31/2014

United Way of Genesee and Lapeer Counties

Keep Genesee County Beautiful for mapping services

JONATHAN H JAROSZ (Flint Ctr/Environmental Rsch)

\$2,500 12/21/2009 - 03/31/2010

Universal Display Corporation

SBIR II: Enhanced Outcoupling of Light for White Emitting OLEDs on Glass Substrates

STEPHEN R FORREST (COE EECS - ECE - SSEL)

\$30,500 08/14/2009 - 08/13/2011

University of California - Irvine

MECHANISMS OF DINITROANILINE ACTION, SELECTIVITY AND RESISTANCE (Tsf from U/C Irvine)

DAVID SAMUEL SEPT (Biomedical Engineering)

\$59,350 07/01/2009 - 12/31/2010

University of California-San Diego

Molecular Basis of Endothelial Remodeling by Flow

JUN-LIN GUAN (Internal Medicine Department)

\$104,599 08/01/2009 - 07/31/2010

University of Chicago

UMCC 2007.094 Avastin and Temozolomide Following Radiation and Chemotherapy for Newly Diagnosed Glioblastoma Multiforme: a Phase II Study

LARRY JUNCK (Neurology Department)

\$17,600 02/01/2009 - 02/28/2012

RECHARGE: Small Molecule Synthesis (NIH)

HOLLIS D SHOWALTER (PHARMACY Medicinal Chemistry)

with SCOTT D LARSEN

\$9,880 12/01/2009 - 11/30/2010

University of Cincinnati

Familial Intracranial Aneurysm Study

LEWIS B MORGENSTERN (Neurology Department)

\$20,022 09/15/2009 - 08/31/2010

University of Maryland, The

Errors in Housing Unit Listing - Supplement

BETH-ELLEN PENNELL (Survey Research Organization)

\$18,736 04/01/2009 - 10/31/2009

University of Massachusetts

The Blurring of Treatment and Research in Clinical Trials: Two Problems

SCOTT YUNG HO KIM (Psychiatry Depression Center)

\$54,725 09/28/2009 - 07/31/2010

GLOBAL REGISTRY OF ACUTE CORONARY EVENTS (GRACE)

KIM ALLEN EAGLE (Int Med-Cardiology)

\$25,000 01/01/2009 - 12/31/2009

University of Miami, Florida, The

Vav3 Oncogene Potentiation of Androgen Receptor Signaling in Prostate Cancer

DIANE M ROBINS (Human Genetics Department)

\$7,513 07/01/2009 - 04/30/2010

University of Texas

Improving knowledge and comprehension with a Best Practices decision aid for asymptomatic carotid disease

BRIAN J ZIKMUND-FISHER (Hlth Behavior & Hlth Ed Dept)

\$41,400 10/01/2009 - 09/30/2010

University of Washington

Editorial Assistance for the Journal of Neurochemistry

STEPHEN K FISHER (Molecular & Behav Neurosc Inst)

\$13,557 01/01/2009 - 12/31/2009

UT-Battelle, LLC

The Suppression of Energy Descretization Errors in Multigroup Transport Calculations

EDWARD W LARSEN (Nuclear Eng & Radiological Sci)

with WILLIAM R MARTIN

\$482,936 10/06/2009 - 09/30/2012

Aging and Embrittlement of High Fluence Stainless Steels

GARY S WAS (Nuclear Eng & Radiological Sci)

with ANTON VAN DER VEN

ZHIJIE JIAO

\$500,001 10/06/2009 - 09/30/2011

Various Sponsors

CVPC : Connected Vehicle Proving Center

STEVE UNDERWOOD (Dbn College of Eng-CEEP)

\$1,032,423 06/17/2009 - 11/30/2010

Human Blood Plasma Consortium

CHRISTOPHER W BEECHER (Ctr fr Translational Pathology)

with HENRY I MOSBERG

\$1,000,000 11/12/2009 - 11/11/2011

Recharge: Wheelchair Restraint Testing

LAWRENCE W SCHNEIDER (UMTRI-Biosciences)

\$9,900 03/01/2007 - 02/28/2010

Recharge: Child Restraint Testing

LAWRENCE W SCHNEIDER (UMTRI-Biosciences)

\$6,316 03/01/2007 - 02/28/2012

Virginia Tech Transportation Institute

*Evaluating Effects of CRS and Vehicle Features
on CRS Installation Errors*

KATHLEEN DESANTIS KLINICH (UMTRI-Biosciences)

with CAROL ANN FLANNAGAN

MATTHEW PAUL REED

PAUL A GREEN

\$216,650 09/10/2009 - 09/09/2010

Washtenaw Health Plan Corporation

Strengthening the Safety Net

EMILY K MEULEMAN (School of Nursing)

with MEGAN J EAGLE

\$80,000 10/01/2009 - 09/30/2010